

Product datasheet for RC207263

CBLN4 (NM_080617) Human Tagged ORF Clone

Product data:

Product Type: Expression Plasmids
Product Name: CBLN4 (NM_080617) Human Tagged ORF Clone
Tag: Myc-DDK
Symbol: CBLN4
Synonyms: CBLNL1
Mammalian Cell Selection: Neomycin
Vector: pCMV6-Entry (PS100001)
E. coli Selection: Kanamycin (25 ug/mL)
ORF Nucleotide Sequence: >RC207263 representing NM_080617
 Red=Cloning site Blue=ORF Green=Tags(s)

TTTTGTAATACGACTCACTATAGGGCGGCCGGAATTCGTCGACTGGATCCGGTACCGAGGAGATCTGCC
 GCC**CGATCGC**C

ATGGGCTCCGGGCGCGGGCGCTGTCCGCGGTGCCGGCCGTGCTGCTGGTCTCACGCTGCCGGGGCTGC
 CCGTCTGGGCACAGAACGACACGGAGCCCATCGTGTGGAGGGCAAGTGTCTGGTGGTGTGCGACTCGAA
 CCCGGCCACGGACTCCAAGGGCTCCTCTTCTCCCGCTGGGGATATCGGTCCGGGCGGCCAACTCCAAG
 GTCGCCTTCTCGGCGGTGCGGAGCACCAACCACGAGCCATCCGAGATGAGCAACAAGACGCGCATCATTT
 ACTTCGATCAGATCCTGGTGAATGTGGTAATTTTTTTCACATTGGAGTCTGTCTTTGTAGCACCAAGAAA
 AGGAATTTACAGTTTCAGTTTTACGTGATTAAGTCTACCAGAGCCAACTATCCAGGTTAACTTGATG
 TTTAAATGGAAAACAGTAATATCTGCCTTTGCGGGGACAAAGATGTTACTCGTGAAGCTGCCACGAATG
 GTGTCCTGCTCTACCTAGATAAAGAGGATAAGGTTTACCTAAAAGTGGAGAAAGTAATTTGGTTGGAGG
 CTGGCAGTATCCACGTTTTCTGGCTTTCTGGTGTCCCTCA

ACGCGTACGCGGCCGCTCGAGCAGAACTCATCTCAGAAGAGGATCTGGCAGCAATGATATCCTGGATT
 ACAAGGATGACGACGATAAGGTTTAA

Protein Sequence: >RC207263 representing NM_080617
 Red=Cloning site Green=Tags(s)

MGSGRRALSAVPAVLLVLTLPGLPVWAQNDTEPIVLEKCLVVCDSNPATDSKSSSSPLGISVRAANSK
 VAFSAVRSTNHEPSEMSNKTRIIYFDQILVNVGNFFTLSEVVFVAPRKGIYSFSFHVIKVVYQSQTIQVNL
 LNGKPVISAFAGDKDVTREAAATNGVLLYLDKEDKVYLKLEKGNLVGGWQYSTFSGFLVFPL

TRTRPLEQKLISEEDLAANDILDYKDDDDKV

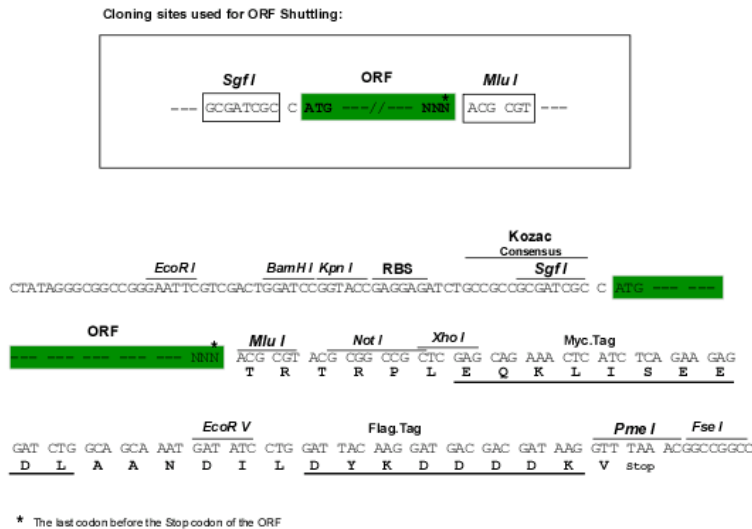


[View online »](#)

Chromatograms: https://cdn.origene.com/chromatograms/ja1462_e01.zip

Restriction Sites: SgfI-MluI

Cloning Scheme:



ACCN: NM_080617

ORF Size: 603 bp

OTI Disclaimer: The molecular sequence of this clone aligns with the gene accession number as a point of reference only. However, individual transcript sequences of the same gene can differ through naturally occurring variations (e.g. polymorphisms), each with its own valid existence. This clone is substantially in agreement with the reference, but a complete review of all prevailing variants is recommended prior to use. [More info](#)

OTI Annotation: This clone was engineered to express the complete ORF with an expression tag. Expression varies depending on the nature of the gene.

Components: The ORF clone is ion-exchange column purified and shipped in a 2D barcoded Matrix tube containing 10ug of transfection-ready, dried plasmid DNA (reconstitute with 100 ul of water).

Reconstitution Method:

1. Centrifuge at 5,000xg for 5min.
2. Carefully open the tube and add 100ul of sterile water to dissolve the DNA.
3. Close the tube and incubate for 10 minutes at room temperature.
4. Briefly vortex the tube and then do a quick spin (less than 5000xg) to concentrate the liquid at the bottom.
5. Store the suspended plasmid at -20°C. The DNA is stable for at least one year from date of shipping when stored at -20°C.

RefSeq: [NM_080617.6](#)

RefSeq Size: 2573 bp

RefSeq ORF: 606 bp

Locus ID: 140689

UniProt ID: [Q9NTU7](#)

Cytogenetics: 20q13.2

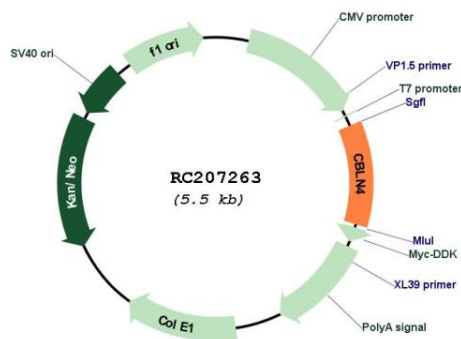
Domains: C1Q

Protein Families: Secreted Protein

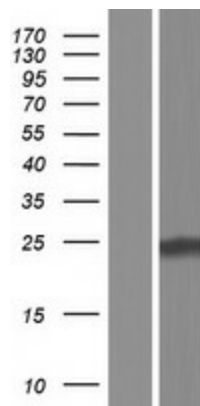
MW: 21.6 kDa

Gene Summary: This gene encodes a member of a family of small secreted proteins containing C1Q domains. Members of this family are involved in regulation of neurexin signalling during synapse development. The mouse homolog of the protein encoded by this gene competes with netrin to bind to the deleted in colorectal cancer receptor. [provided by RefSeq, Aug 2012]

Product images:



Circular map for RC207263



Western blot validation of overexpression lysate (Cat# [LY409158]) using anti-DDK antibody (Cat# [TA50011-100]). Left: Cell lysates from untransfected HEK293T cells; Right: Cell lysates from HEK293T cells transfected with RC207263 using transfection reagent MegaTran 2.0 (Cat# [TT210002]).