

Product datasheet for **RC207255**

SLITRK4 (NM_173078) Human Tagged ORF Clone

Product data:

Product Type:	Expression Plasmids
Product Name:	SLITRK4 (NM_173078) Human Tagged ORF Clone
Tag:	Myc-DDK
Symbol:	SLITRK4
Mammalian Cell Selection:	Neomycin
Vector:	pCMV6-Entry (PS100001)
E. coli Selection:	Kanamycin (25 ug/mL)



[View online »](#)

ORF Nucleotide
Sequence:

>RC207255 ORF sequence
Red=Cloning site Blue=ORF Green=Tags(s)

TTTTGTAATACGACTCACTATAGGGCGGCCGGAATTCGTCGACTGGATCCGGTACCGAGGAGATCTGCC
GCC**CGCATCGCC**

ATGTTTCTGTGGCTGTTTCTGATTTTGTACGCCCTGATTTCTTCGACAAATGCAGATTCTGACATATCGG
TGGAAATTTGCAATGTGTGTTCCCTGCGTGTGAGTTGAGAATGTGCTCTATGTCAACTGTGAGAAGGTTTC
AGTCTACAGACCAAATCAGCTGAAACCACCTTGGTCTAATTTTTATCACCTCAATTTCCAAAATAATTTT
TAAATATTCTGTATCCAAATACATTCTTGAATTTTTACATGCAGTCTCCCTGCATCTGGGGAATAATA
AACTGCAGAACATTGAGGGAGGAGCCTTTCTGGGCTCAGTGCATTAAGCAGTTGCACTTGAACAACAA
TGAATTAAGATTCTCCGAGCTGACACTTTCTTGGCATAGAGAAGTGGAGTATCTCCAGGCTGACTAC
AATTTAATCAAGTATATTGAACGAGGAGCCTTCAATAAGCTCCACAACTGAAAGTTCTCATTCTTAATG
ACAATCTGATTTTCCTTCTGATAATTTTTCCGATTCGCATCTTTGACCCATCTGGATATACGAGG
GAACAGAATCCAGAAGCTCCCTTATATCGGGTCTGGAACACATTGGCCGTGTCTGTTGAATTGCAACTG
GAAGATAACCCCTTGAAGCTGTAGCTGTGATTTATTGCCCTTAAAAGCTTGGCTGGAGAACATGCCATATA
ACATTTACATAGGAGAAGCTATCTGTGAAACTCCCAGTGACTTATATGGAAGGCTTTTAAAAGAAACCAA
CAAACAAGAGCTATGTCCCATGGGCACCGCAGTGATTTTACGTCGCATCCTGCCTCCATCTCAGCTG
GAAAATGGCTACACCACTCCCAATGGTCACACTACCAACATCTTTACACAGATTAGTAACTAAACCAC
CAAAAACAACAAATCCTTCCAAGATCTCTGGAATCGTTGACAGGCAAGCCCTCTCCAACCGCAATCTCAG
TCAGATTGTGCTTACCAACAAGGGTGCCTCCTAACACCTTGCCCGCACCTTGCTTCTGCAAAAACA
CACCTTCAGATTTGGGACTAAGTGTGAAGTCCCAAGAGAAAAATATACAGTCTATGCTGAACTGATAC
CGAAACCTTTAAATGCGAAGAAGCTGCAGTCAATGGCAATAGCATCAAGGATGTGGAGTACAGACTT
CACTGACTTTGAAGGACTGGATTTGCTTCAATTTAGGCAGCAATCAAATTACAGTGATTAAGGGAGACGTA
TTTCACAATCTCACTAATTTACGAGGCTATATCTCAATGGCAATCAAATTGAGAGACTCTATCCTGAAA
TATTTTTCAGTCTTCATAACCTGCAGTATCTGTATTTGGAATACAATTTGATTAAGGAAATCTCAGCAGG
CACCTTTGACTCCATGCCAAATTTGCAGTTACTGTACTTAAACAATAATCTCCTAAAGAGCCTGCCTGTT
TACATCTTTCCGGAGCACCTTAGCTAGACTGAACCTGAGGAACAACAATTCATGTACCTGCCTGTCA
GTGGGGTCTTGATCAGTTGCAATCTTACACAGATTGACTTGGAGGGCAACCCATGGGACTGTACTTG
TGACTTGGTGGCATTAAAGCTGTGGTGGAGAAGTTGAGCGACGGGATTGTTGTGAAAGAAGTGAATGT
GAGACGCCTGTTCAAGTTGCCAACATTGAACTGAAGTCCCTCAAATGAAATCTTATGTCCAACTTT
TAAATAAGCCGTCTGCACCATTCACAAGCCTGCACCTGCCATTACATTCACCACTCCTTTGGGTCCCAT
TCGAAGTCTCCTGGTGGGCCAGTGCCTCTGTCTATTTAATCTTAAGTATCTTAGTGGTCTCATTTTA
ACGGTGTTTGTTGCTTTTTGCCTTCTTGTTTTTGTCTGCGACGCAACAAGAAACCAACAGTGAAGCACG
AAGGCCTGGGGAATCCTGACTGTGGCTCCATGCAGCTGCAGCTAAGGAAGCATGACCACAAGACCAATAA
AAAAGATGGACTGAGCACAGAAGCTTTCATTCCACAACTATAGAACAGATGAGCAAGAGCCACACTTGT
GGCTTGAAAGAGTCAGAACTGGGTTTATGTTTTAGATCCTCCAGGACAGAAAGTTGTTATGAGAAATG
TGCCCGACAAGGAGAAAGATTTATACATGTAGATACCAGGAAGAGACTGAGCACAATTGATGAGCTGGA
TGAATTTCCCTAGCAGGGATTCCAATGTGTTTTATTGAGATTTTCTTGAAGCAAAAAGGAGTATAAT
AGCATAGGTGTAGTGGCTTTGAGATCCGCTATCCAGAAAAACAACAGACAAAAAAGTAAGAAGTCAC
TGATAGGTGGCAACCACAGTAAAATTGTTGTGGAACAAAGGAAGAGTGAGTATTTTGAAGTGAAGGCGAA
ACTGCAGAGTTCCCTGACTACCTACAGGTCCTTGGAGGCAACAGCTTTGAACAAGATC

ACGCGTACGCGGCCGCTCGAGCAGAACTCATCTCAGAAGAGGATCTGGCAGCAATGATATCCTGGATT
ACAAGGATGACGACGATAAGGTTTAA

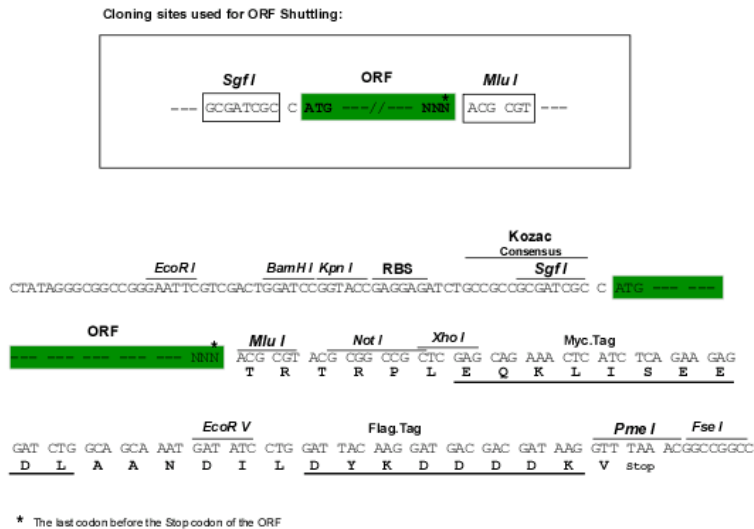
Protein Sequence: >RC207255 protein sequence
Red=Cloning site Green=Tags(s)

MFLWFLILSALISSTNADSDISVEICNVCSVSVENVLYVNCEKVSVYRPNQLKPPWSNFYHLNFQNNF
LNILYPNTFLNFHAVSLHLGNNKLQNIEGGAFGLSALKQLHLNNEKILRADTFLGIENLEYLQADY
NLIKYIERGAFNKLHKLKVLILNDNLISFLPDNIFRFASLTHLDIRGNRIQKLPYIGVLEHIGRVVQL
EDNPWNCSCDLLPLKAWLENMPYNIYIGEAI CETPSDLYGRLLKETNKQELCPMGTGSDFDVRI LPPSQL
ENGYTTPNGHTTQTSLHRLVTKPPKTTNPSKISGIVAGKALSNRNLSQIVSYQTRVPLTPCPAPCFCKT
HPSDLGLSVNCQEKNIQSMSELIPKPLNAKKLHVNGNSIKDVDVSDFTDFEGLDLLHLGNSQITVIKGDV
FHNLTLNRLYLNGNQIERLYPEIFSGLHNLQYLYLEYNLIKEISAGTFDSMPNLQLLYLNNLLKSLPV
YIFSGAPLARLNLRNKFMYPVSGVLDQLQSLTQIDLEGNPWDCTCDLVALKLWVEKLSDGIVVKELKC
ETPVQFANIELKSLKNEILCPKLLNKPSAPFTSPAPAITFTTPLGPIRSPGGPVPLSILILSILVVLIL
TVFVAFCLLVFVLRNKKPTVKHEGLGNPDCGSMQLQRKHDHKTNKKDGLSTEAFIPQTEQMSKSHTC
GLKESETGMFSDPPGQKVVMRNVADKEKDLLHVDTRKRLSTIDELDELFP SRDSNVFIQNFLSKKEYN
SIGVSGFEIRYPEKQPKKSKKSLIGGNHSKI VVEQRKSEYFELKAKLQSSPDYLQVLEEQTALNKI

TRTRPLEQKLISEEDLAANDILDYKDDDDKV

Chromatograms: https://cdn.origene.com/chromatograms/mk6290_b06.zip

Restriction Sites: Sgfl-Mlul

Cloning Scheme:


ACCN: NM_173078

ORF Size: 2511 bp

OTI Disclaimer: The molecular sequence of this clone aligns with the gene accession number as a point of reference only. However, individual transcript sequences of the same gene can differ through naturally occurring variations (e.g. polymorphisms), each with its own valid existence. This clone is substantially in agreement with the reference, but a complete review of all prevailing variants is recommended prior to use. [More info](#)

OTI Annotation: This clone was engineered to express the complete ORF with an expression tag. Expression varies depending on the nature of the gene.

Components: The ORF clone is ion-exchange column purified and shipped in a 2D barcoded Matrix tube containing 10ug of transfection-ready, dried plasmid DNA (reconstitute with 100 ul of water).

Reconstitution Method:

1. Centrifuge at 5,000xg for 5min.
2. Carefully open the tube and add 100ul of sterile water to dissolve the DNA.
3. Close the tube and incubate for 10 minutes at room temperature.
4. Briefly vortex the tube and then do a quick spin (less than 5000xg) to concentrate the liquid at the bottom.
5. Store the suspended plasmid at -20°C. The DNA is stable for at least one year from date of shipping when stored at -20°C.

RefSeq: [NM_173078.1](#)

RefSeq Size: 8695 bp

RefSeq ORF: 2514 bp

Locus ID: 139065

UniProt ID: [Q8IW52](#)

Cytogenetics: Xq27.3

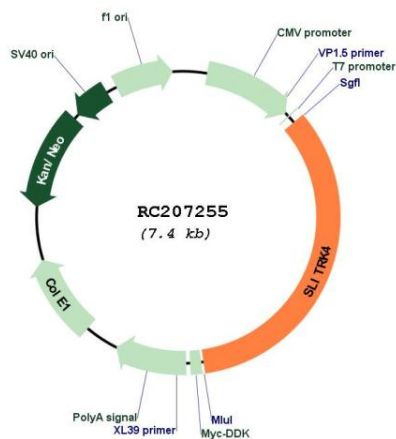
Domains: LRRNT, LRRCT, LRR, LRR_TYP, LRR_SD22, LRR_PS

Protein Families: Transmembrane

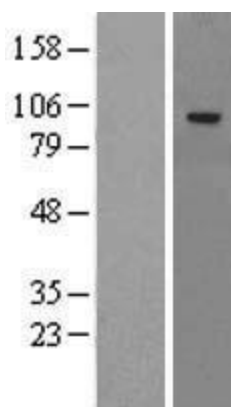
MW: 94.3 kDa

Gene Summary: This gene encodes a transmembrane protein belonging to the the SLITRK family. These family members include two N-terminal leucine-rich repeat domains similar to those found in the axonal growth-controlling protein SLIT, as well as C-terminal regions similar to neurotrophin receptors. Studies of an homologous protein in mouse suggest that this family member functions to suppress neurite outgrowth. Alternative splicing results in multiple transcript variants. [provided by RefSeq, May 2010]

Product images:



Circular map for RC207255



Western blot validation of overexpression lysate (Cat# [LY406675]) using anti-DDK antibody (Cat# [TA50011-100]). Left: Cell lysates from untransfected HEK293T cells; Right: Cell lysates from HEK293T cells transfected with RC207255 using transfection reagent MegaTran 2.0 (Cat# [TT210002]).