

## Product datasheet for **RC207250**

### **NIM1K (NM\_153361) Human Tagged ORF Clone**

#### **Product data:**

Product Type:	Expression Plasmids
Product Name:	NIM1K (NM_153361) Human Tagged ORF Clone
Tag:	Myc-DDK
Symbol:	NIM1K
Synonyms:	NIM1
Mammalian Cell Selection:	Neomycin
Vector:	pCMV6-Entry (PS100001)
E. coli Selection:	Kanamycin (25 ug/mL)



[View online »](#)

**ORF Nucleotide Sequence:**

>RC207250 ORF sequence  
 Red=Cloning site Blue=ORF Green=Tags(s)

TTTTGTAATACGACTCACTATAGGGCGGCCGGAATTCGTCGACTGGATCCGGTACCGAGGAGATCTGCC  
 GCC**CGGATCGCC**

ATGACTGCAGTGTATATGAATGGAGGTGGCCTGGTGAACCCCATATGCCCGGTGGGATCGGCGGACA  
 GTGTAGAAAGTGGCTGTACAGCCGAGAGTAGCAAGGAGGTGAGGAGGGACAGCCCGCCAGCTGACGCC  
 CTTTCGAGAAACTGACACAGGACATGTCCAGGATGAGAAGGTGGTGGAGGAGATCACGCTGGGAAACGG  
 ATAGGCTTCTACCGAATTCGAGGGGAAATCGGAAGTGGAACTTCTCCAAGTGAAGCTTGGGATCACT  
 CCCTAACCAAAGAAAAGGTGGCCATTAAGATCCTGGACAAGACCAAGTTAGACCAGAAAACCCAGAGGCT  
 ACTATCCCAGAAAATCTCCAGCATGAAAAGCTGCACCATCCAACATCATCCGCCTTACGAAGTGGT  
 GAGACCCTATCCAAGCTGCACTTGGTATGGAGTATGCAGGGGTGGGAGCTCTTCGAAAAATTAGCA  
 CTGAGGGGAAGCTCTCTGAACCAGAAAGCAAGCTCATCTTCTCCAGATTGTGTCTGCCGTGAAGCACAT  
 GCATGAAAACCAAATTATTCATAGAGATCTGAAAGCAGAAAATGTATTCTATACCAGTAATACTTGTGTG  
 AAGGTGGGCGATTTTGGATTGAGCAGTAAGCAAAAAAGGTGAAATGCTGAACACTTTCTGTGGGTCTC  
 CTCCTACGCTGCGCCTGAACTTTCGGGACGAGCACTACATCGGCATTACGTGGATATCTGGGCCTT  
 GGGGTGCTTTTGTACTTCATGGTACTGGCACCATGCCATTTCCGGCAGAAAACCGTGGCCAACTAAAA  
 AAGAGCATCCTCGAGGGCACATACAGTGTACCGCCGACGTGTACAGGCCTGCCACCGACTCATCCGAG  
 GAGTCTTCAGCAGATCCCACGGAGAGGTACGGAATCGACTGCATCATGAATGATGAATGGATGCAAGG  
 GGTGCCATACCCTACACCTTTGGAACCTTCCAAGTGGATCCCAAACATTTGTTCGAAACCGACTCTC  
 AAGGAAGAAGAAAATGAGGTCAAAGCACTTTAGAACATTTGGCATTACAGAAGAGCATATTCGAAATA  
 ACCAAGGGAGAGATGCTCGCAGCTCAATCACAGGGGTCTATAGAATTATTTTACATAGAGTCCAAAGGAA  
 GAAGGCTTTGAAAGTGTCCAGTCATGATGCTACCAGACCCTAAAGAAAGAGACCTCAAAAAGGGTCC  
 CGTGTCTACAGAGGGATAAGACACATCCAAATTTTGTCTGATTTTA

**ACGCGT**ACGCGGCCGCTCGAGCAGAACTCATCTCAGAAGAGGATCTGGCAGCAATGATATCCTGGATT  
 ACAAGGATGACGACGATAAGGTTTAA

**Protein Sequence:**

>RC207250 protein sequence  
 Red=Cloning site Green=Tags(s)

MTAVYMNGGGLVNPYARWDRRDSVESGCQTESSKEGEEGQPRQLTPFEKLTQDMSQDEKVVREITLGR  
 IGFYRIRGEIGSGNFSQVKLGIHSLTKEKVAIKILDKTKLDQKTQRLSREISSMEKLHHPNIIRLYEVV  
 ETL SKLHLVMEYAGGGELFGKISTEGKLSEPEKLI FSQIVSAVKHMHENQIIHRDLKAENVFYTSNTCV  
 KVGDFGFSTVSKKGEMLNTFCGSPPYAAPELFRDEHYIGIYVDI WALGVLLYFMVTGTMFPRAETVAKLK  
 KSILEGTYSVPPHVSEPCRLIRGVLQQIPTERYGIDCINDEWMQGVYPTPLEPFQLDPKHLSETSTL  
 KEEENEVKSTLEHLGITEHIRNNQGRDARSSITGVYRIILHRVQRKKALESVPVMMLPDKERDLKKG  
 RYVRGIRHTSKFCSIL

**TR**TRPLEQKLISEEDLAANDILDYKDDDDKV

**Chromatograms:**

[https://cdn.origene.com/chromatograms/mk6074\\_g08.zip](https://cdn.origene.com/chromatograms/mk6074_g08.zip)

**Restriction Sites:**

Sgfl-Mlul

**Cloning Scheme:**


**ACCN:** NM\_153361

**ORF Size:** 1308 bp

**OTI Disclaimer:** The molecular sequence of this clone aligns with the gene accession number as a point of reference only. However, individual transcript sequences of the same gene can differ through naturally occurring variations (e.g. polymorphisms), each with its own valid existence. This clone is substantially in agreement with the reference, but a complete review of all prevailing variants is recommended prior to use. [More info](#)

**OTI Annotation:** This clone was engineered to express the complete ORF with an expression tag. Expression varies depending on the nature of the gene.

**Components:** The ORF clone is ion-exchange column purified and shipped in a 2D barcoded Matrix tube containing 10ug of transfection-ready, dried plasmid DNA (reconstitute with 100 ul of water).

**Reconstitution Method:**

1. Centrifuge at 5,000xg for 5min.
2. Carefully open the tube and add 100ul of sterile water to dissolve the DNA.
3. Close the tube and incubate for 10 minutes at room temperature.
4. Briefly vortex the tube and then do a quick spin (less than 5000xg) to concentrate the liquid at the bottom.
5. Store the suspended plasmid at -20°C. The DNA is stable for at least one year from date of shipping when stored at -20°C.

**RefSeq:** [NM\\_153361.2](#), [NP\\_699192.1](#)

**RefSeq Size:** 2483 bp

**RefSeq ORF:** 1311 bp

**Locus ID:** 167359

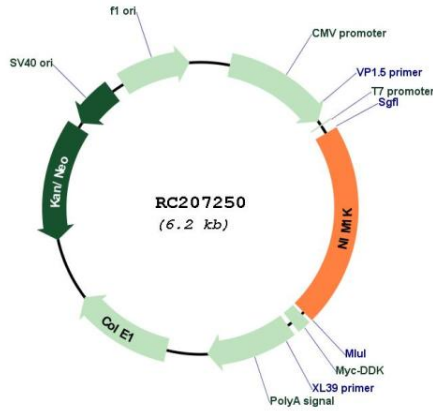
**UniProt ID:** [Q8IY84](#)

**Cytogenetics:** 5p12

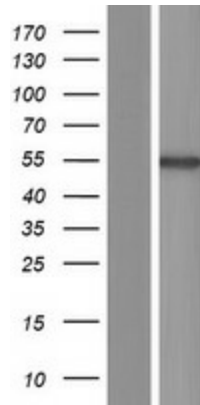
Protein Families: Druggable Genome, Protein Kinase

MW: 49.6 kDa

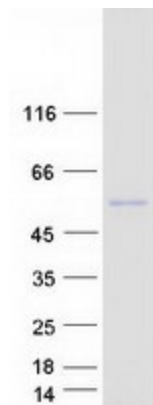
Product images:



Circular map for RC207250



Western blot validation of overexpression lysate (Cat# [LY407074]) using anti-DDK antibody (Cat# [TA50011-100]). Left: Cell lysates from untransfected HEK293T cells; Right: Cell lysates from HEK293T cells transfected with RC207250 using transfection reagent MegaTran 2.0 (Cat# [TT210002]).



Coomassie blue staining of purified NIM1K protein (Cat# [TP307250]). The protein was produced from HEK293T cells transfected with NIM1K cDNA clone (Cat# RC207250) using MegaTran 2.0 (Cat# [TT210002]).