

Product datasheet for **RC207246**

CTAGE15 (NM_001008747) Human Tagged ORF Clone

Product data:

Product Type:	Expression Plasmids
Product Name:	CTAGE15 (NM_001008747) Human Tagged ORF Clone
Tag:	Myc-DDK
Symbol:	CTAGE15
Synonyms:	cTAGE-15; CTAGE15P
Mammalian Cell Selection:	Neomycin
Vector:	pCMV6-Entry (PS100001)
E. coli Selection:	Kanamycin (25 ug/mL)



[View online »](#)

**ORF Nucleotide
Sequence:**

>RC207246 representing NM_001008747
 Red=Cloning site Blue=ORF Green=Tags(s)

TTTTGTAATACGACTCACTATAGGGCGGCCGGAATTCGTGACTGGATCCGGTACCGAGGAGATCTGCC
 GCC**CGCATCGCC**

ATGTGCAGCTGTTATTGGATTTTTTGTGTTCTCCTTTTTTGTGGAGAAGTTAGATCGGTTAGGAGTC
 GGCTTTACGTGGGAAGAGAGCAAAAACCTGGTGCAACGCTTTCTGGACTAATTGAAGAAAAATGTAACCT
 ACTTGAAAAGTTTAGCCTTATTCAAAAAGAGTATGAAGGCTATGAAGTAGAGTCACTTTAGAGGATGCC
 AGCTTTGAGAAGGCGGCAGCAGAAGAAGCACGAAGTTGGAGGCAACCTGTGAAAAGCTGAACAGGTCCA
 ATTCTGAACCTTGAGGATGAAATCCTCTGTCTAGAAAAAGACTTAAAAGAAGAGAAATCTAAACATTCTCA
 ACAAGATGAATTGATGGCGGATATTTCAAAAAGTATACAGTCTCTAGAAGATGAGTCAAAATCCCTCAA
 TCACAAATAGCTGAAGCCAAAATCATCTGCAAGACATTTAAAATGAGTGAAGAACGACGGGCTATAGCAA
 TAAAAGATGCTTTGAATGAAAATTTCAACTTCAGACAAGCCATAAACAGCTTTTTTCAGCAAGAAGCTGA
 AGTATGGAAAGGAGAAGTGAAGTAACTTAAATAACAGAAAATAACATTTGAAGACTCCAAAGTACACGCA
 GAACAAGTTCTGAATGATAAAGAAAATCACATCAAGACCCTGACTGGACACTTGCCAATGATGAAAGATC
 AGGCTGCTGTGCTTGAAGAAGACACAACGGATGATGATAACCTGGAATTAGAAGTGAACAGTCAATGGGA
 AAATGGTGCTAACTTAGATGATCCTCTGAAAGGAGCTTTGAAGAAAAGTATTGCTGCTGCTAAGTTAAAT
 GTTTCTTTAAAAAGCTTAGAAGGAGAAAAGAAACACATTATTTAGTATCTGAAGTGGCAAAAACAA
 AGGAAGAGCTTACAGAGCATATTAATACTTCAGACTCAACAAGAATCTTTGCAATCAGAAAACATATA
 TTTTGAAGTGAAGTGAAGTCAAGAGCTTCAACAGAACTTAAAATAATGACTGAATTCATCAAGAAGATGAA
 ATGAAACTCTATAGGAAATTAACAGTGGAGGAAAATTACCGAATAGAGGGAGAAGAGAAGCTTTCTAAAG
 TGGAAAGAAAAGCTCAGCCGTGCCACTGAACAGCTGGAGACCTATAGAAAAGCTAGCCAAAGATCTTGAAG
 AGAATTGGAGAGAACTGTTCAATTTTTATCAAAAGCAGGTTATTTCTACGAGAAAAGAGGACATGATAAT
 TGGTTGGCAGCTCGGACTGCTGAAAAGAACTCAGTGATTTAAGGAAAAGAAAATGCTCACAAACAAACAA
 AATTAAGTGAACAGAGTTGAAATTTGAACTTTTGAAGAAAAGATCCTAATGCACTTGATGTTTCAAATAC
 AGCATTGGCAGAGAGCATGCCCGAATGGTCCCGCACCATTGGGTGAGCGTTCATCTGAAACGAGAGCT
 TTTCTCTCTCTCAAACCTTTGTTGGAGGATCCACTGGGACTCTCACCTGTGCTTCCGGAGGGAGGAGGAA
 GAGGCCAAGAGGCCAGGGAATCCCTGGACCATCAGATTACCAATGAAAGAGGAGAACCAAGCTGTGA
 CAGGTTAACCGATCCTCACAGGGCTCCTTCTGACTGGGTCCCTGTCTCCTGTTGGAACAGGACTGT
 AAGATGATGTTTCTCCACCAGGACAATCATATCTGATTGAGTCTTCTCTCTCAAAGGGAAGACAGAT
 TTTATTCTAATCTGAAAGACTGTCTGGATCAGCAGAACCAGAAAGTTTTAAAATGACTTCTTTGGATAA
 AATGGATGGGTCAATGCCTTCAGAAATGGAATCCAGTAGAAATGATGCCAAAGATGATCTTGGTAATTTA
 AATGTGCCTGATTCATCTCTCCCTGCTGAAAATGAAGCAACTGGCCCTGGCTTTATTTCTCCACCTCTTG
 CTCCAGTCAGAGGACCATGTTTCCAGTGGATACAAGGGGCCGTTTATGAGAAGAGGACCTCCTTTCCC
 CCCACCTCTCCAGGAACCATGTTTGGAGCTTCTCGAGGTTATTTTCCACCAAGGGATTTCCAGGTCCA
 CCACATGCTCCATTTGCAATGAGAAACATCTACCCACCGAGGGTTTACCTCCTTACTTTACCCGAGAC
 CTGGATTTACCCCAACCCCGCATTC

ACGCGTACGCGGCCGCTCGAGCAGAACTCATCTCAGAAGAGGATCTGGCAGCAAATGATATCTGGATT
 ACAAGGATGACGACGATAAGGTTTAA

Protein Sequence: >RC207246 representing NM_001008747
 Red=Cloning site Green=Tags(s)

MCSCYWIFCCSPFFVEKFRSVRSRLYVGREQKLGATLSGLIEEKCKLLEKFSLIQKEYEGYEVESSELEDA
 SFEKAAAEARSLEATCEKLNRSNSELEDEILCLEKDLKEEKSKHSQQDELMADISKSIQSLEDESKSLK
 SQIAEAKIICKTFKMSEERRAIAIKDALNENSQLQTSKQLFQQEAEVWKGEVSELNKQKITFEDSKVHA
 EQVLNDKENHIKTLTGHLPMMKQAAVLEEDTDDDNLELEVNSQWENGANLDDPLKGLKLIHAAKLN
 VSLKSLGERNHIIQLSEVDKTEELTEHIKNLQTQQESLQSENIYFESENQKLQKLIKIMTEFYQDE
 MKLYRKLVEENYRIEGEEKLSKVEEKLSRATEQLETYRKLAKDLEEEELERTVHFYQKQVISYEKRGHDN
 WLAARTAERNLSDLRKENAHNKQKLTETELKFELLEKDPNALDVSNTAFGREHAPNGPAPLGRSSETRA
 FLSPQTLLEDPLGLSPVLEGGGRGPRGPNLDHQITNERGEPSCDRLTDPHRAPSDTGSLSPPVEQDC
 KMMFPPPGQSYPPDSALPPQREDRFYSNSERLSGSAEPRSFKMTSLDKMDGSMPEMSESSRNDAKDDLGNL
 NVPDSSLPAENEATGPGFIPPLAPVRGPLFPVDTRGPFMRGPPFPPPPGTMFGASRGYFPPRDFPGP
 PHAPFAMRNIYPPRGLPPYFHRPFGFYNPAPF

TRTRPLEQKLISEEDLAANDILDYKDDDDKV

Chromatograms: https://cdn.origene.com/chromatograms/mk6514_a02.zip

Restriction Sites: SgfI-MluI

Cloning Scheme:

Cloning sites used for ORF Shuttling:



* The last codon before the Stop codon of the ORF

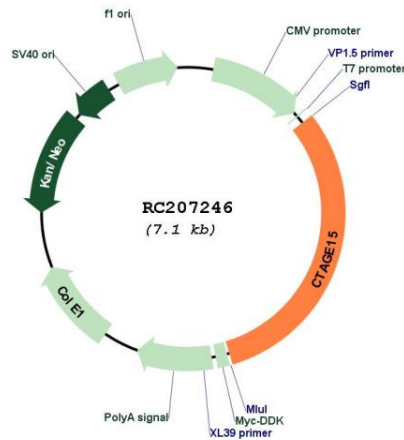
ACCN: NM_001008747

ORF Size: 2196 bp

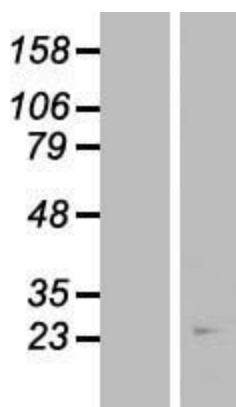
OTI Disclaimer: The molecular sequence of this clone aligns with the gene accession number as a point of reference only. However, individual transcript sequences of the same gene can differ through naturally occurring variations (e.g. polymorphisms), each with its own valid existence. This clone is substantially in agreement with the reference, but a complete review of all prevailing variants is recommended prior to use. [More info](#)

OTI Annotation: This clone was engineered to express the complete ORF with an expression tag. Expression varies depending on the nature of the gene.

Components:	The ORF clone is ion-exchange column purified and shipped in a 2D barcoded Matrix tube containing 10ug of transfection-ready, dried plasmid DNA (reconstitute with 100 ul of water).
Reconstitution Method:	<ol style="list-style-type: none"> 1. Centrifuge at 5,000xg for 5min. 2. Carefully open the tube and add 100ul of sterile water to dissolve the DNA. 3. Close the tube and incubate for 10 minutes at room temperature. 4. Briefly vortex the tube and then do a quick spin (less than 5000xg) to concentrate the liquid at the bottom. 5. Store the suspended plasmid at -20°C. The DNA is stable for at least one year from date of shipping when stored at -20°C.
RefSeq Size:	2355 bp
RefSeq ORF:	2334 bp
Locus ID:	441294
UniProt ID:	<u>A4D2H0</u>
Cytogenetics:	7q35
MW:	83 kDa

Product images:


Circular map for RC207246



Western blot validation of overexpression lysate (Cat# [LY423371]) using anti-DDK antibody (Cat# [TA50011-100]). Left: Cell lysates from untransfected HEK293T cells; Right: Cell lysates from HEK293T cells transfected with RC207246 using transfection reagent MegaTran 2.0 (Cat# [TT210002]).