

## Product datasheet for RC207244

### PPIL6 (NM\_173672) Human Tagged ORF Clone

#### Product data:

Product Type:	Expression Plasmids
Product Name:	PPIL6 (NM_173672) Human Tagged ORF Clone
Tag:	Myc-DDK
Symbol:	PPIL6
Synonyms:	bA425D10.6; dj919F19.1; PPIase; RSPH12
Mammalian Cell Selection:	Neomycin
Vector:	pCMV6-Entry (PS100001)
E. coli Selection:	Kanamycin (25 ug/mL)
ORF Nucleotide Sequence:	>RC207244 ORF sequence Red=Cloning site Blue=ORF Green=Tags(s)

TTTTGTAATACGACTCACTATAGGGCGCCGGGAATTCGTCGACTGGATCCGGTACCGAGGAGATCTGCC  
GCC**CGATCGCC**

ATGGCAAGGCCGAGCCGTGCGGGCCCCGCACGCTAGGTGCGGCTCGCCGTCGCTGCCGGAGCGGCCGC  
TGCAGGTGAAGGTGGTGGGGCTTTCAGCTGCCCAACTTTCAGATTGCGAAGAGCGCCGCTGAGAATCT  
GAAGAATAATCATCCATCCAAATTTGAAGATCCTATATTAGTTCCTCTTCAAGAATTTGCATGGCATCAA  
TATCTACAGGAGAAAAAAGGGAATCAAAAATGAAACCTGGGAATATTCTTCTCTGTGATTTCTTTTG  
TTAATGGTCAGTTTCTGGGTGATGCATTGGATCTGCAGAAATGGGCCACGAGGTGTGGGATATAGTTGA  
CATTAAACCTCTGCACTTTATGACGCACTCACTGAGGATTTTTCCGCTAAGTTCCTTAAGAGACACCAAG  
CATGATTTCTGTGTTTTGGACATTTGTATTGATTCTTCTCCAATTGGAAGATTGATTTTTGAGCTATACT  
GTGATGTGTGCCAAAACATGTAATAATTTTCAGGTCTTGTGCACAGGAAAAGCAGGGTTTTCTCAACG  
TGGCATAAGACTACATTACAAAATTCATTTTTTCATCGAATAGTACAGAATGGCTGGATACAAGGGGG  
GATATAGTGTATGGAAAAGGAGATAATGGAGAGTCGATTTATGGTCCAACATTTGAAGATGAAAATTTT  
CAGTTCCTCATAATAAAAGAGGAGTACTTGAATGGCCAACAAAGGCCGTACAGCAACGGGTACAATT  
CTATATCACACTGCAAGCAACTCCTTATCTAGATAGAAAATTTGTGGCTTTTGGGCAACTGATTGAAGGA  
ACAGAAGTGCTTAAACAAGTAAATAGTTCCAACACAGAATGAAAGACCAATACATATGTGTAGAATTA  
CTGACAGTGGAGATCCTTATGCT

**ACGCGT**ACGCGGCCGCTCGAGCAGAAACTCATCTCAGAAGAGGATCTGGCAGCAATGATATCCTGGATT  
ACAAGGATGACGACGATAAGGTTTAA



[View online »](#)

**Protein Sequence:** >RC207244 protein sequence  
Red=Cloning site Green=Tags(s)

MARPQPCGPPHARCSPSLPERPLQVKVVLGFSCPWFQIAKSAENLKNHPSKFEDPILVPLQEFAWHQ  
 YLQEKRELKNETWEYSSSVISFVNGQFLGDALDLQKWAHEVWDIVDIKPSALYDALTEDFSAKFLRDTK  
 HDFVFLDICIDSSPIGRILIFELYCDVCPKTCKNFQVLCCTGKAGFSQRGIRLHYKNSIFHRIVQNGWIQGG  
 DIVYKGDNGESIYGPTFEDEFNSVPHNKRGLGMANKGRHSNGSQFYITLQATPYLDRKFVAFGQLIEG  
 TEVLKQLELVPTQNERPIHMCRIITDSGDPYA

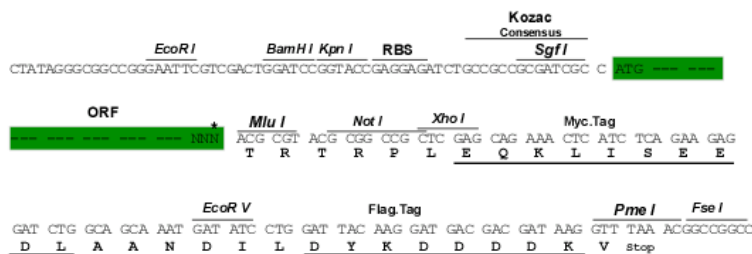
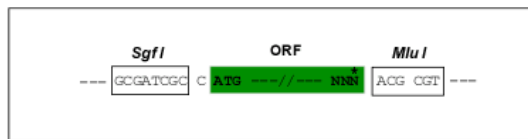
TRTRPLEQKLISEEDLAANDILDYKDDDDKV

**Chromatograms:** [https://cdn.origene.com/chromatograms/mk6339\\_c11.zip](https://cdn.origene.com/chromatograms/mk6339_c11.zip)

**Restriction Sites:** SgfI-MluI

**Cloning Scheme:**

Cloning sites used for ORF Shuttling:



\* The last codon before the Stop codon of the ORF

**ACCN:** NM\_173672

**ORF Size:** 933 bp

**OTI Disclaimer:** The molecular sequence of this clone aligns with the gene accession number as a point of reference only. However, individual transcript sequences of the same gene can differ through naturally occurring variations (e.g. polymorphisms), each with its own valid existence. This clone is substantially in agreement with the reference, but a complete review of all prevailing variants is recommended prior to use. [More info](#)

**OTI Annotation:** This clone was engineered to express the complete ORF with an expression tag. Expression varies depending on the nature of the gene.

**Components:** The ORF clone is ion-exchange column purified and shipped in a 2D barcoded Matrix tube containing 10ug of transfection-ready, dried plasmid DNA (reconstitute with 100 ul of water).

**Reconstitution Method:**

1. Centrifuge at 5,000xg for 5min.
2. Carefully open the tube and add 100ul of sterile water to dissolve the DNA.
3. Close the tube and incubate for 10 minutes at room temperature.
4. Briefly vortex the tube and then do a quick spin (less than 5000xg) to concentrate the liquid at the bottom.
5. Store the suspended plasmid at -20°C. The DNA is stable for at least one year from date of shipping when stored at -20°C.

**RefSeq:** [NM\\_173672.5](#)

**RefSeq Size:** 4145 bp

**RefSeq ORF:** 936 bp

**Locus ID:** 285755

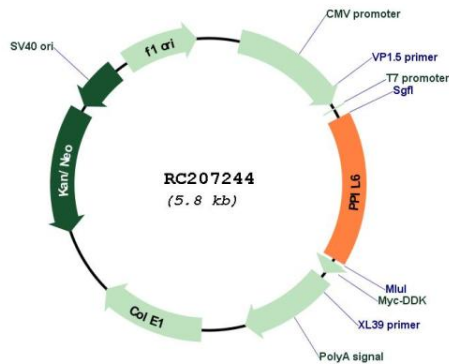
**UniProt ID:** [Q8IXY8](#)

**Cytogenetics:** 6q21

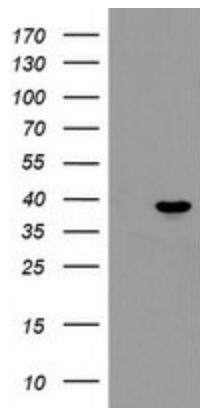
**MW:** 35.2 kDa

**Gene Summary:** Probable inactive PPIase with no peptidyl-prolyl cis-trans isomerase activity.[UniProtKB/Swiss-Prot Function]

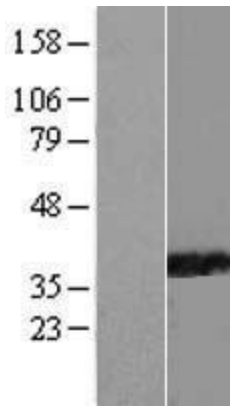
### Product images:



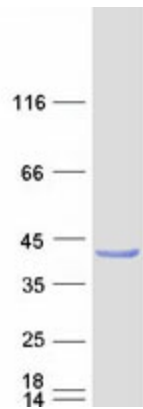
Circular map for RC207244



HEK293T cells were transfected with the pCMV6-ENTRY control (Cat# [PS100001], Left lane) or pCMV6-ENTRY PPIL6 (Cat# RC207244, Right lane) cDNA for 48 hrs and lysed. Equivalent amounts of cell lysates (5 ug per lane) were separated by SDS-PAGE and immunoblotted with anti-PPIL6 (Cat# [TA504846]). Positive lysates [LY406551] (100ug) and [LC406551] (20ug) can be purchased separately from OriGene.



Western blot validation of overexpression lysate (Cat# [LY406551]) using anti-DDK antibody (Cat# [TA50011-100]). Left: Cell lysates from untransfected HEK293T cells; Right: Cell lysates from HEK293T cells transfected with RC207244 using transfection reagent MegaTran 2.0 (Cat# [TT210002]).



Coomassie blue staining of purified PPIL6 protein (Cat# [TP307244]). The protein was produced from HEK293T cells transfected with PPIL6 cDNA clone (Cat# RC207244) using MegaTran 2.0 (Cat# [TT210002]).