

Product datasheet for **RC207237**

ZPBP2 (NM_198844) Human Tagged ORF Clone

Product data:

Product Type:	Expression Plasmids
Product Name:	ZPBP2 (NM_198844) Human Tagged ORF Clone
Tag:	Myc-DDK
Symbol:	ZPBP2
Synonyms:	ZPBPL
Mammalian Cell Selection:	Neomycin
Vector:	pCMV6-Entry (PS100001)
E. coli Selection:	Kanamycin (25 ug/mL)
ORF Nucleotide Sequence:	>RC207237 ORF sequence Red=Cloning site Blue=ORF Green=Tags(s)

TTTTGTAATACGACTCACTATAGGGCGGCCGGAATTCGTCGACTGGATCCGGTACCGAGGAGATCTGCC
GCC**CGATCGCC**

ATGATGCGAACGTGCGTCTACTCTCCGCGGTGCTCTGGTGCCTCACAGGAGACAAAATATATGTAGAGT
TACATCAAAATAGTCCAGTCCTTATCTGTATGGATTTTAAAGCTTCTAAAAAGAAATAGTGGACCCAC
CTACTTATGGATTGGCCTAATGAAAAGACGTTAACAGGAAATAATAGAATAAATAAAGTAACTGAACTGGA
CAGCTGATGGTGAAGATTTTTGGAGCCTTTGTCTGGACTTTACACATGTACTTTCTTATAAGACTG
TTAAAGCAGAACTCAAGAAGAAAAACAGTCAAAAAGAGATATGACTTTATGGTCTTTCCTATCGGGA
ACCTGATTATTCATATCAGATGGCTGTACGTTTTACCACAAGGCTTGTATAGGGAGATACAATGATGTA
TTCTTTAGAGTGCTGAAGAAAATCTTGATAGTCTAATTTCTGATTTGTCATGCCATGTCATAGAGCCAT
CATATAAATGCCATTCTGTTGAAATCCAGAACATGGCCTCATACATGAGCTATTTATAGCATTTCAAGT
TAATCCTTTTGCGCCGGGTGGAAAGGTGCTTGAATGGATCTGTTGACTGTGAAGATACCACTAATCAT
AATATCCTCCAGGCAAGAGATCGAATAGAAGACTTTTTTCGGAGCCAAGCATATATTTTCTACCATAACT
TTAATAAACTCTACCAGCAATGCATTTTGTGGACCACAGTTTGAAGTAGTACGCTGGATAGCTGTCG
ACCAGGCTTTGGAAAAATGAACGTCTACACAGTAATTGCGCTAGCTGTTGTGTGGTTTGTAGTCTGCG
ACTTTTAGTCCTGATGTTAATGTAACCTGTCAGACCTGCGTTCCGTCCTTACCTATGGAGCTAAATCTT
GCCCAAACTTCAAACAAAATCAGCAATATGAAGAT

ACGCGTACGCGGCCGCTCGAGCAGAACTCATCTCAGAAGAGGATCTGGCAGCAATGATATCCTGGATT
ACAAGGATGACGACGATAAGGTTTAA



[View online »](#)

Protein Sequence: >RC207237 protein sequence
Red=Cloning site Green=Tags(s)

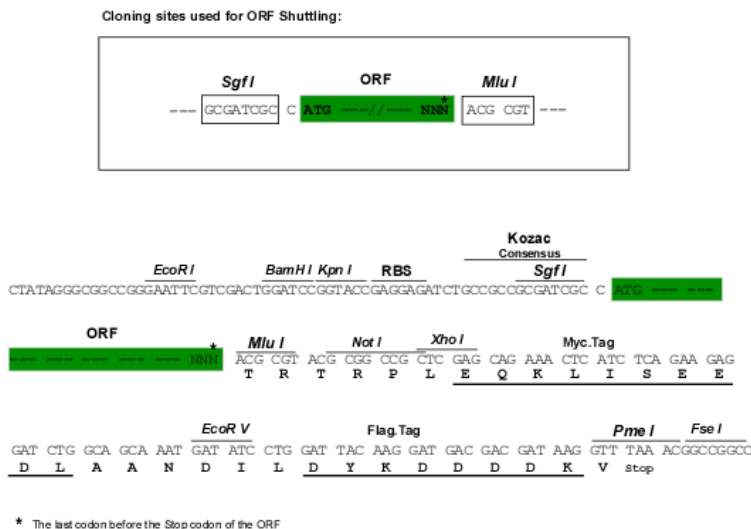
```
MMRTCVLLSAVLWCLTGDKIYVELHQNSPVLICMDFKLSKKEIVDPTYLWIGPNEKTLTGNNRINITETG
QLMVKDFLEPLSGLYCTL SYKTVKAETQEETVKKRYDFMVFAYREPDYSYQMAVRFTTRSCIGRYNDV
FFRVLKKILDSLISDLSCHVIEPSYKCHSVEIPEHGLIHelfIAFQVNPFAFGWKACNGSVDCEDTTNH
NILQARDRIEDFFRSQAYIFYHNFNKTLPAMHFVDHSLQVVRLDSCRPGFGKNERLHSNCASCCVVCSPA
TFSPDVNVTCQTCVSVLTYGAKSCPQTSNKNQYED
```

TRTRPLEQKLISEEDLAANDILDYKDDDDKV

Chromatograms: https://cdn.origene.com/chromatograms/mk6023_f10.zip

Restriction Sites: SgfI-MluI

Cloning Scheme:



ACCN: NM_198844

ORF Size: 948 bp

OTI Disclaimer: The molecular sequence of this clone aligns with the gene accession number as a point of reference only. However, individual transcript sequences of the same gene can differ through naturally occurring variations (e.g. polymorphisms), each with its own valid existence. This clone is substantially in agreement with the reference, but a complete review of all prevailing variants is recommended prior to use. [More info](#)

OTI Annotation: This clone was engineered to express the complete ORF with an expression tag. Expression varies depending on the nature of the gene.

Components: The ORF clone is ion-exchange column purified and shipped in a 2D barcoded Matrix tube containing 10ug of transfection-ready, dried plasmid DNA (reconstitute with 100 ul of water).

Reconstitution Method:

1. Centrifuge at 5,000xg for 5min.
2. Carefully open the tube and add 100ul of sterile water to dissolve the DNA.
3. Close the tube and incubate for 10 minutes at room temperature.
4. Briefly vortex the tube and then do a quick spin (less than 5000xg) to concentrate the liquid at the bottom.
5. Store the suspended plasmid at -20°C. The DNA is stable for at least one year from date of shipping when stored at -20°C.

RefSeq: [NM_198844.3](#)

RefSeq Size: 2205 bp

RefSeq ORF: 951 bp

Locus ID: 124626

UniProt ID: [Q6X784](#)

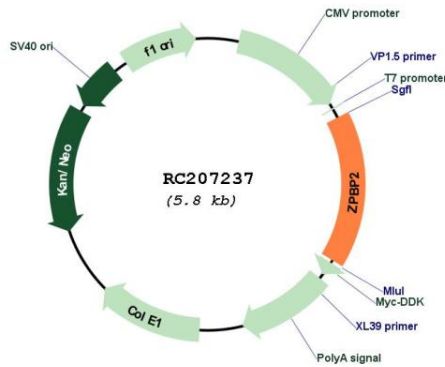
Cytogenetics: 17q21.1

Protein Families: Secreted Protein

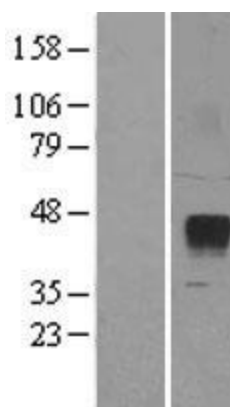
MW: 36.1 kDa

Gene Summary: Is implicated in sperm-oocyte interaction during fertilization.[UniProtKB/Swiss-Prot Function]

Product images:



Circular map for RC207237



Western blot validation of overexpression lysate (Cat# [LY403691]) using anti-DDK antibody (Cat# [TA50011-100]). Left: Cell lysates from untransfected HEK293T cells; Right: Cell lysates from HEK293T cells transfected with RC207237 using transfection reagent MegaTran 2.0 (Cat# [TT210002]).