

Product datasheet for RC207235

ZNF785 (NM_152458) Human Tagged ORF Clone

Product data:

Product Type:	Expression Plasmids
Product Name:	ZNF785 (NM_152458) Human Tagged ORF Clone
Tag:	Myc-DDK
Symbol:	ZNF785
Synonyms:	ZNF688
Mammalian Cell Selection:	Neomycin
Vector:	pCMV6-Entry (PS100001)
E. coli Selection:	Kanamycin (25 ug/mL)
ORF Nucleotide Sequence:	>RC207235 ORF sequence Red=Cloning site Blue=ORF Green=Tags(s)

TTTTGTAATACGACTCACTATAGGGCGGCCGGGAATTCGTCGACTGGATCCGGTACCGAGGAGATCTGCC
GCC**CGATCGCC**

ATGGGGCCGCCCTGGCGCCGCGCCCGGCCACGTACCCGGGAGGCCGGGCCCGGAGGACGAGGGAAA
GCAGGCCGGCGCGGTGAGCTTCGCGGACGTGGCCGTGTACTTCTCTCCCGAGGAGTGGGAATGCCTGCG
GCCAGCGCAGAGGGCCCTGTACCGGGACGTGATCGGGAGACCTTCGGCCACCTGGCGCGCTGGGATTT
TCAGTTCCCAAACCCGCTTTTATCTCGTGGGTGGAAGGAGAAGTGGAGGCGTGGAGCCCGGAGGCCCAGG
ATCCCGACGGTGAGAGCTCTGCAGCTTTCAGCAGGGCCAAGGACAGGAAGCAGGATCCAGGGATGGGAA
TGAGGAGAAGGAAAGGCTGAAGAAGTGTCCAAAACAAAAGAGGTGGCGCATGAAGTGGCTGCAAGGAG
TGGTGGCCAGCGTCGCCTGCCAGAGTTCGCAACCCTAGGCAGAGCCCATGAATCCCTGGCTCAAGG
ACACTCTGACCCGAAGACTGCCCACTCTTGCCAGACTGTGGCCGCAACTTCAGCTACCCCTCCCTCCT
GGCCAGCCACCAGCGGTCCTCCGCGGAGCGGCCCTTCTCCTGCGGCCAGTGTGAGGCGGTTTCTCC
CAGCGCAGGTACCTGCTCCAGCATCAGTTCATCCACACCGGCGAGAAGCCCTACCCTGCCCGACTGCG
GGCGCCGCTTCCGCCAGAGGGGTTCCCTGGCTATCCACAGGCGGGCTCACACCGGGGAGAAGCCTTACGC
GTGCTCAGACTGCAAGAGTCGCTTCACTTACCCTACCTGCTGGCCATCCACCAGCGCAAGCACACGGGC
GAGAAGCCCTACAGTGCCCCGATTGCAGCCTCGTTCGCTACACCTCCCTGCTGGCCATCCACAGCG
GCATACACACCGGCGAGAAGCCCTACCCTGTCCTGACTGCGGCGCGCTTACCTATTCTTCCCTCCT
CCTCAGTCACCGGCGCATTCACTCCGACAGCCGCCCTTCCCCTGCGTGGAGTGTGGGAAAGGCTTCAAG
CGCAAGACCGCCCTGGAAGCCATCGGTGGATCCACCGCTCCTGCAGCGAGAGGCGCGCTGGCAGCAGG
CCGTGGTGGGCGTTCAGAGCCCATCCCTGTTTTGGGAGGAAGGATCCCCAGTTCACTCCGGCACTT
TCCAGATATATTCAAGAGTGTGGG

AG**CGGACCG**ACGCGTACGCGGCCGCTCGAGCAGAACTCATCTCAGAAGAGGATCTGGCAGCAAATGATATCC
TGGATTACAAGGATGACGACGATAAGGTTTAA



Protein Sequence: >RC207235 protein sequence
Red=Cloning site Green=Tags(s)

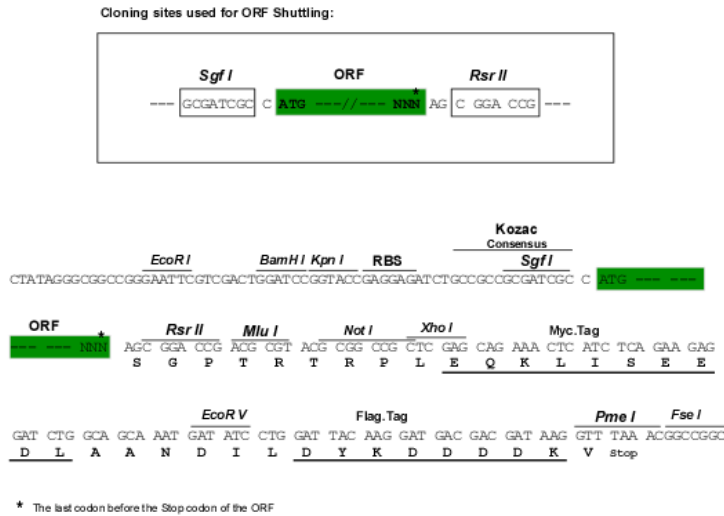
MGPPLAPRPAHVPGEAGPRRTRESRPGAVSFADVAVYFSPEEWECLRPAQRALYRDVMRETFGHLGALGF
 SVPKPAFISWVEGEVEAWSPEAQDPDGESSAAF SRGQGQEAGSRDGNEEKERLKKCPKQKEVAHEVAVKE
 WWPSVACPEFCNPRQSPMNPWLKDTL TRRLPHSCPDGGRNFSYP SLLASHQRVHSGERPFSCGQCQARFS
 QRRYLLQHQFIHTGEKPYPCDCGRRFRQ RGLAIHRRRAHTGEKPYACSDCKSRFTYPYLLAIHQKHTG
 EKPYSCPD CSLRFAYTSL LAIHRRRIHTGEKPYPCDCGRRFTYSSLLLSHRRIHSDSRFPFCVECGKGFK
 RKTAL EHRWIHRSCSERRAWQQA VVGRSEPI PVLGGKDP PVHFRHFPDIFQECC

SGPTRTRPLEQKLI SEEDLAANDILDYKDDDDKV

Chromatograms: https://cdn.origene.com/chromatograms/mk6620_c11.zip

Restriction Sites: SgfI-RsrII

Cloning Scheme:



ACCN: NM_152458

ORF Size: 1215 bp

OTI Disclaimer: The molecular sequence of this clone aligns with the gene accession number as a point of reference only. However, individual transcript sequences of the same gene can differ through naturally occurring variations (e.g. polymorphisms), each with its own valid existence. This clone is substantially in agreement with the reference, but a complete review of all prevailing variants is recommended prior to use. [More info](#)

OTI Annotation: This clone was engineered to express the complete ORF with an expression tag. Expression varies depending on the nature of the gene.

Components: The ORF clone is ion-exchange column purified and shipped in a 2D barcoded Matrix tube containing 10ug of transfection-ready, dried plasmid DNA (reconstitute with 100 ul of water).

Reconstitution Method:

1. Centrifuge at 5,000xg for 5min.
2. Carefully open the tube and add 100ul of sterile water to dissolve the DNA.
3. Close the tube and incubate for 10 minutes at room temperature.
4. Briefly vortex the tube and then do a quick spin (less than 5000xg) to concentrate the liquid at the bottom.
5. Store the suspended plasmid at -20°C. The DNA is stable for at least one year from date of shipping when stored at -20°C.

RefSeq: [NM_152458.7](#)

RefSeq Size: 3265 bp

RefSeq ORF: 1218 bp

Locus ID: 146540

UniProt ID: [A8K8V0](#)

Cytogenetics: 16p11.2

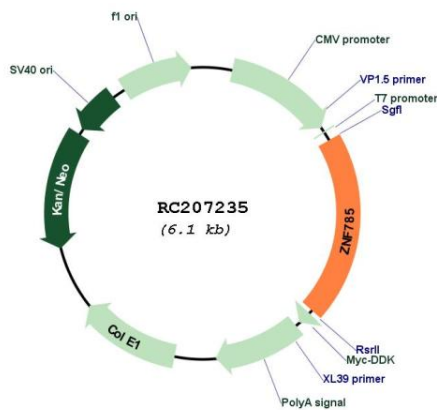
Domains: KRAB, zf-C2H2

Protein Families: Transcription Factors

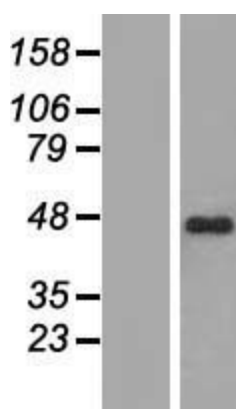
MW: 46.2 kDa

Gene Summary: May be involved in transcriptional regulation.[UniProtKB/Swiss-Prot Function]

Product images:



Circular map for RC207235



Western blot validation of overexpression lysate (Cat# [LY407518]) using anti-DDK antibody (Cat# [TA50011-100]). Left: Cell lysates from untransfected HEK293T cells; Right: Cell lysates from HEK293T cells transfected with RC207235 using transfection reagent MegaTran 2.0 (Cat# [TT210002]).