

## Product datasheet for **RC207225L2V**

### GFPT1 (NM\_002056) Human Tagged ORF Clone Lentiviral Particle

#### Product data:

Product Type:	Lentiviral Particles
Product Name:	GFPT1 (NM_002056) Human Tagged ORF Clone Lentiviral Particle
Symbol:	GFPT1
Synonyms:	CMS12; CMSTA1; GFA; GFAT; GFAT 1; GFAT1; GFAT1m; GFPT; GFPT1L; MSLG
Mammalian Cell Selection:	None
Vector:	pLenti-C-mGFP (PS100071)
Tag:	mGFP
ACCN:	NM_002056
ORF Size:	2043 bp
ORF Nucleotide Sequence:	The ORF insert of this clone is exactly the same as(RC207225).
OTI Disclaimer:	The molecular sequence of this clone aligns with the gene accession number as a point of reference only. However, individual transcript sequences of the same gene can differ through naturally occurring variations (e.g. polymorphisms), each with its own valid existence. This clone is substantially in agreement with the reference, but a complete review of all prevailing variants is recommended prior to use. <a href="#">More info</a>
OTI Annotation:	This clone was engineered to express the complete ORF with an expression tag. Expression varies depending on the nature of the gene.
RefSeq:	<a href="#">NM_002056.1</a>
RefSeq Size:	3082 bp
RefSeq ORF:	2046 bp
Locus ID:	2673
UniProt ID:	<a href="#">Q06210</a>
Cytogenetics:	2p13.3
Domains:	GATase_2, SIS
Protein Families:	Protease



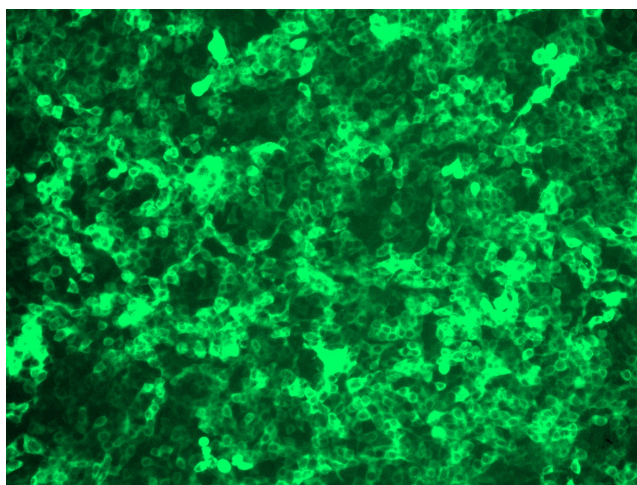
[View online »](#)

**Protein Pathways:** Alanine, aspartate and glutamate metabolism, Amino sugar and nucleotide sugar metabolism, Metabolic pathways

**MW:** 76.6 kDa

**Gene Summary:** This gene encodes the first and rate-limiting enzyme of the hexosamine pathway and controls the flux of glucose into the hexosamine pathway. The product of this gene catalyzes the formation of glucosamine 6-phosphate. [provided by RefSeq, Sep 2008]

### Product images:



[RC207225L2] was used to prepare Lentiviral particles using [TR30037] packaging kit. HEK293T cells were transduced with RC207225L2V particle to overexpress human GFPT1-mGFP fusion protein.