

Product datasheet for **RC207220**

PARN (NM_002582) Human Tagged ORF Clone

Product data:

Product Type:	Expression Plasmids
Product Name:	PARN (NM_002582) Human Tagged ORF Clone
Tag:	Myc-DDK
Symbol:	PARN
Synonyms:	DAN; DKCB6; PFBMFT4
Mammalian Cell Selection:	Neomycin
Vector:	pCMV6-Entry (PS100001)
E. coli Selection:	Kanamycin (25 ug/mL)



[View online »](#)

ORF Nucleotide
Sequence:

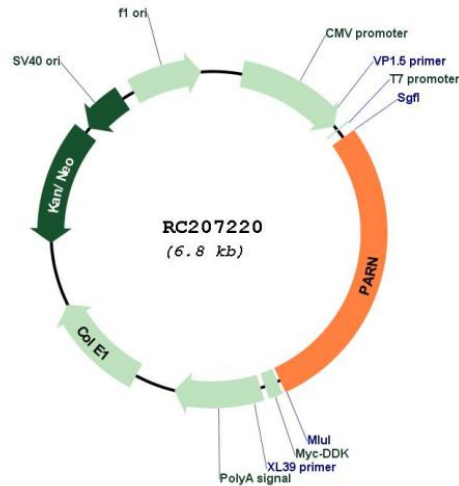
>RC207220 ORF sequence
Red=Cloning site Blue=ORF Green=Tags(s)

TTTTGTAATACGACTCACTATAGGGCGGCCGGAATTCGTCGACTGGATCCGGTACCGAGGAGATCTGCC
GCC**CGGATCGCC**

ATGGAGATAATCAGGAGCAATTTTAAGAGTAATCTTCACAAAGTGTACCAGGCCATAGAGGAGGCCGACT
TCTTCGCCATCGATGGGGAGTTTTTCAGGAATCAGTGATGGACCTTCAGTCTCTGCATTAACAAATGGTTT
TGACACTCCAGAAGAGAGGTATCAGAAGCTTAAAAAGCATTCCATGGACTTTTTGCTATTTTCAGTTTGGC
CTTTGCACTTTTAAGTATGACTACACAGATTCAAAGTATATAACGAAGTCATTTAACTTCTATGTTTTCC
CGAAACCCCTTCAATAGATCCTCACCAGATGTCAAATTTGTTTGTGACAGCTCCAGCATTGACTTTCTAGC
AAGCCAGGGATTTGATTTAATAAAAGTTTTTCGAAATGGAATTCATATTTAAATCAGGAAGAAGAAAGA
CAGTTAAGAGAGCAGTATGATGAAAAACGTTACAGGCGAATGGTGCAGGAGCTCTGTCTATGTATCTC
CTAACACTTCAAATGTCCTGTACGATTCCTGAGGATCAAAGAAGTTTATTGACCAAGTGGTAGAGAA
AATAGAGGATTTATTACAAAGTGAAGAAAACAAGAACTTGGATTTAGAGCCATGTACCGGTTCCAAAGA
AAACTAATTTATCAGACTTTGAGCTGGAAGTATCCGAAAGGCATTTCATGTTGAGACTTTAGAAAAGTAAA
AGAAGGAGCGATATATAGTTATCAGCAAAGTAGATGAAGAAGAACGAAAAGAAGAGAGCAGCAGAAACA
TGCCAAAGAACAGGAGGAGCTGAATGATGCTGTGGGATTTCTAGAGTCACTTACGCCATTGCTAATTCG
GGAAAACCTGTTATTGGACACAATATGCTCTTGGACGTCATGCACACAGTTCATCAGTTCTACTGCCCTC
TGCTGCGGACTTAAGTGAGTTTAAAGAGATGACAACATGTGTTTTCCCAAGCTTTGGATACTAAATT
GATGGCCAGCACACAACCTTTTAAAGGATATCATTAAACAACATCCCTTGCAGGAAATGGAAAAGCGGTTA
AAAGAGACACCTTTCAACCCTCCTAAAGTTGAAAGTGCCGAAGTTTTCCAAGTTATGACACAGCCTCTG
ACAACCTCCACGAGGCAGGCTACGATGCCTACATCACAGGGCTGTGCTTCATCTCCATGGCCAATTACCT
AGGTTCTTTTCTCAGCCCTCCAAAAATTCATGTGTCTGCCAGATCAAAACTCATTGAACCTTTTTTTAAC
AAGTTATTTCTTATGAGGTCATGGATATCCCCTATCTAAACTTGGAAGGACCAGACTTGCAGCCTAAAC
GTGATCATGTTCTCCATGTGACATTCGCCAAAGAATGGAAAACCAGCGACCTTTACCAGCTTTTCAGTGC
CTTTGGTAACATTCAGATATCCTGGATTGATGACACATCAGCATTGTTTCCCTTAGCCAGCCCGAGCAA
GTAAGATTGCTGTCAATACCAGCAAATATGCAGAAAGCTATCGGATCCAAACCTATGCTGAATATATGG
GGAGAAAACAGGAAGAGAAGCAGATCAAAGAAAGTGGACTGAAGATAGCTGGAAGGAGGCTGACAGCAA
ACGGTTAAACCCCAAGTGCATACCCTACACCCTGCAGAATCACTATTACCACAACATAGTTTTACAGCT
CCCAGCACAGTAGGAAAGAGAAATTTGAGTCTAGTCAAGAGGAAGCTGGCCTGGAGGACGGAGTGTGAG
GGGAGATTTCCGACACTGAGCTTGAGCAGACCGATTCTGTGCAGAGCCCTCTCAGAGGGAAGGAAAAA
GGCCAAGAAATTAAGAAGATGAAGAAGGAGCTTTCTCCAGCAGGAAGCATCTCGAAGAACAGCCCTGCC
ACACTCTTTGAAGTTCCTGACACATGG

ACGCGTACGCGGCCGCTCGAGCAGAAACTCATCTCAGAAGAGGATCTGGCAGCAAATGATATCCTGGATT
ACAAGGATGACGACGATAAGGTTTAA

Plasmid Map:



ACCN: NM_002582

ORF Size: 1917 bp

OTI Disclaimer: The molecular sequence of this clone aligns with the gene accession number as a point of reference only. However, individual transcript sequences of the same gene can differ through naturally occurring variations (e.g. polymorphisms), each with its own valid existence. This clone is substantially in agreement with the reference, but a complete review of all prevailing variants is recommended prior to use. [More info](#)

OTI Annotation: This clone was engineered to express the complete ORF with an expression tag. Expression varies depending on the nature of the gene.

Components: The ORF clone is ion-exchange column purified and shipped in a 2D barcoded Matrix tube containing 10ug of transfection-ready, dried plasmid DNA (reconstitute with 100 ul of water).

Reconstitution Method:

1. Centrifuge at 5,000xg for 5min.
2. Carefully open the tube and add 100ul of sterile water to dissolve the DNA.
3. Close the tube and incubate for 10 minutes at room temperature.
4. Briefly vortex the tube and then do a quick spin (less than 5000xg) to concentrate the liquid at the bottom.
5. Store the suspended plasmid at -20°C. The DNA is stable for at least one year from date of shipping when stored at -20°C.

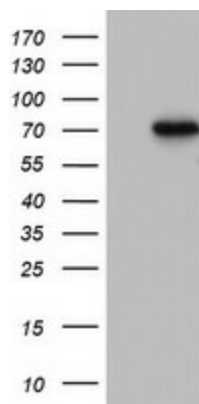
RefSeq: [NM_002582.4](#)

RefSeq Size: 3083 bp

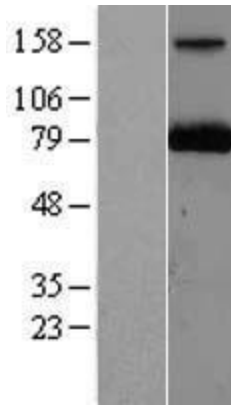
RefSeq ORF:	1920 bp
Locus ID:	5073
UniProt ID:	O95453
Cytogenetics:	16p13.12
Domains:	R3H, CAF1
Protein Families:	Transcription Factors
Protein Pathways:	RNA degradation
MW:	73.5 kDa

Gene Summary: The protein encoded by this gene is a 3'-exoribonuclease, with similarity to the RNase D family of 3'-exonucleases. It prefers poly(A) as the substrate, hence, efficiently degrades poly(A) tails of mRNAs. Exonucleolytic degradation of the poly(A) tail is often the first step in the decay of eukaryotic mRNAs. This protein is also involved in silencing of certain maternal mRNAs during oocyte maturation and early embryonic development, as well as in nonsense-mediated decay (NMD) of mRNAs that contain premature stop codons. Alternatively spliced transcript variants encoding different isoforms have been found for this gene. [provided by RefSeq, Aug 2008]

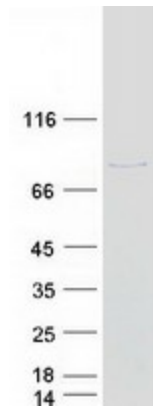
Product images:



HEK293T cells were transfected with the pCMV6-ENTRY control (Cat# [PS100001], Left lane) or pCMV6-ENTRY PARN (Cat# RC207220, Right lane) cDNA for 48 hrs and lysed. Equivalent amounts of cell lysates (5 ug per lane) were separated by SDS-PAGE and immunoblotted with anti-PARN (Cat# [TA802668]). Positive lysates [LY419233] (100ug) and [LC419233] (20ug) can be purchased separately from OriGene.



Western blot validation of overexpression lysate (Cat# [LY419233]) using anti-DDK antibody (Cat# [TA50011-100]). Left: Cell lysates from untransfected HEK293T cells; Right: Cell lysates from HEK293T cells transfected with RC207220 using transfection reagent MegaTran 2.0 (Cat# [TT210002]).



Coomassie blue staining of purified PARN protein (Cat# [TP307220]). The protein was produced from HEK293T cells transfected with PARN cDNA clone (Cat# RC207220) using MegaTran 2.0 (Cat# [TT210002]).