

Product datasheet for **RC207217**

PKC beta 1 (PRKCB) (NM_002738) Human Tagged ORF Clone

Product data:

Product Type:	Expression Plasmids
Product Name:	PKC beta 1 (PRKCB) (NM_002738) Human Tagged ORF Clone
Tag:	Myc-DDK
Symbol:	PKC beta 1
Synonyms:	PKC-beta; PKCB; PKCbeta; PKCI(2); PRKCB1; PRKCB2
Mammalian Cell Selection:	Neomycin
Vector:	pCMV6-Entry (PS100001)
E. coli Selection:	Kanamycin (25 ug/mL)



[View online »](#)

ORF Nucleotide
Sequence:

>RC207217 ORF sequence
Red=Cloning site Blue=ORF Green=Tags(s)

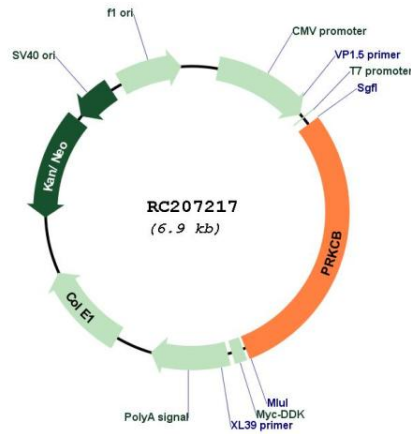
TTTTGTAATACGACTCACTATAGGGCGGCCGGGAATTCGTCGACTGGATCCGGTACCGAGGAGATCTGCC
GCC**CGGATCGCC**

ATGGCTGACCCGGCTGCGGGGCCCGCCGAGCGAGGGCGAGGAGACCCGTGCGCTTCGCCCGCAAAG
GCGCCCTCCGGCAGAAGAACGTGCATGAGGTCAAGAACCACAAATTCACCGCCCGCTTCTCAAGCAGCC
CACCTTCTGCAGCCACTGCACCGACTTCATCTGGGGCTTCGGAAGCAGGGATTCAGTGCCAAGTTTGC
TGCTTTGTGGTGACAAGCGGTGCCATGAATTTGTACATTCTCCTGCCCTGGCGCTGACAAGGGTCCAG
CCTCCGATGACCCCGCAGCAAACACAAGTTAAGATCCACACGTACTCCAGCCACGTTTTGTGACCA
CTGTGGTCACTGCTGTATGGACTATCCACCAGGGGATGAAATGTGACACCTGCATGATGAATGTGCAC
AAGCGTCCGTGATGAATGTTCCAGCCTGTGTGGCACGGACCACACGGAGCGCCGCGCCGCATCTACA
TCCAGGCCACATCGACAGGGACGTCTCATTGTCTCGTAAGAGATGCTAAAAACCTTGTACCTATGGA
CCCAATGGCCTGTCAGATCCCTACGTAAGTAACTGAACTGATTCCCGATCCAAAAGTGAGAGCAAACAG
AAGACCAAAACCATCAAATGCTCCCTCAACCTGAGTGAATGAGACATTTAGATTTTCAGCTGAAAAGAT
CGGACAAAAGACAGAAGACTGTCAGTAGAGATTTGGGATTTGGGATTTGACCAGCAGGAATGACTTCATGGG
ATCTTTGTCTTTGGGATTTCTGAACCTTCAGAAAGCCAGTGTGATGGCTGGTTTAAAGTTACTGAGCCAG
GAGGAAGGCGAGTACTTCAATGTGCCTGTGCCACCAGAAGGAAGTGAGGCCAATGAAGAAGTGGCCGAGA
AATTTGAGAGGGCCAAGATCAGTCAGGGAACCAAGGTCCCGGAAGAAAAGACGACCAACACTGTCTCAA
ATTTGACAACAATGGCAACAGAGACCGGATGAACTGACCGATTTTAACTTCCTAATGGTGTGGGAAA
GGCAGCTTTGGCAAGGTGATGCTTTCAGAACGAAAAGGCACAGATGAGCTCTATGCTGTGAAGATCCTGA
AGAAGGACGTTGTGATCCAAGATGATGACGTGGAGTGCCTATGGTGGAGAAGCGGGTGTGGCCCTGCC
TGGGAAGCCGCCCTTCTGACCCAGCTCCACTCCTGCTTCCAGACCATGGACCGCCTGTACTTTGTGATG
GAGTACGTGAATGGGGGCGACCTCATGTATCACATCCAGCAAGTCGGCCGGTTCAAGGAGCCCCATGCTG
TATTTTACGCTGCAGAAATTGCCATCGGTCTGTTCTTCTTACAGAGTAAGGGCATCATTTACCGTGACCT
AAAACCTTGACAACGTGATGCTCGATTCTGAGGGACACATCAAGATTGCCGATTTTGGCATGTGTAAGGAA
AACATCTGGGATGGGGTGACAACCAAGACATTCTGTGGCACTCCAGACTACATCGCCCCGAGATAATTG
CTTATCAGCCCTATGGGAAGTCCGTGGATTGGTGGGCATTTGGAGTCTGCTGTATGAAATGTTGGCTGG
GCAGGCACCTTTGAAGGGGAGGATGAAGATGAACTCTTCCAATCCATCATGGAACACAACGTAGCCTAT
CCCAAGTCTATGTCCAAGGAAGCTGTGGCCATCTGCAAAGGGCTGATGACCAAACACCCAGGCAAACGTC
TGGGTTGTGGACCTGAAGGCGAACGTGATATCAAAGAGCATGCATTTTTCCGGTATATTGATTGGGAGAA
ACTTGAACGCAAAGAGATCCAGCCCCCTTATAAGCCAAAAGCTTGTGGGCGAAATGCTGAAAACCTCGAC
CGATTTTTACCCGCCATCCACCAGTCTAACACCTCCCGACCAGGAAGTCATCAGGAATATTGACCAAT
CAGAATTCGAAGGATTTTCTTTGTTAACTCTGAATTTTTAAACCCGAAGTCAAGAGC

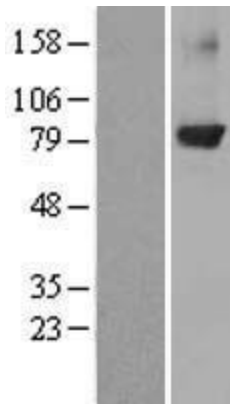
ACGCGTACGCGGGCCGCTCGAGCAGAACTCATCTCAGAAGAGGATCTGGCAGCAAATGATATCCTGGATT
ACAAGGATGACGACGATAAGGTTTAA

Reconstitution Method:	<ol style="list-style-type: none">1. Centrifuge at 5,000xg for 5min.2. Carefully open the tube and add 100ul of sterile water to dissolve the DNA.3. Close the tube and incubate for 10 minutes at room temperature.4. Briefly vortex the tube and then do a quick spin (less than 5000xg) to concentrate the liquid at the bottom.5. Store the suspended plasmid at -20°C. The DNA is stable for at least one year from date of shipping when stored at -20°C.
RefSeq:	NM_002738.7
RefSeq Size:	8014 bp
RefSeq ORF:	2022 bp
Locus ID:	5579
UniProt ID:	P05771
Cytogenetics:	16p12.2-p12.1
Domains:	C2, pkinase, S_TK_X, TyrKc, DAG_PE-bind, S_TKc
Protein Families:	Druggable Genome, Protein Kinase
Protein Pathways:	B cell receptor signaling pathway, Calcium signaling pathway, Chemokine signaling pathway, ErbB signaling pathway, Fc epsilon RI signaling pathway, Fc gamma R-mediated phagocytosis, Focal adhesion, Gap junction, Glioma, GnRH signaling pathway, Leukocyte transendothelial migration, Long-term depression, Long-term potentiation, MAPK signaling pathway, Melanogenesis, Natural killer cell mediated cytotoxicity, Non-small cell lung cancer, Pathways in cancer, Phosphatidylinositol signaling system, Tight junction, Vascular smooth muscle contraction, VEGF signaling pathway, Vibrio cholerae infection, Wnt signaling pathway
MW:	77 kDa
Gene Summary:	<p>Protein kinase C (PKC) is a family of serine- and threonine-specific protein kinases that can be activated by calcium and second messenger diacylglycerol. PKC family members phosphorylate a wide variety of protein targets and are known to be involved in diverse cellular signaling pathways. PKC family members also serve as major receptors for phorbol esters, a class of tumor promoters. Each member of the PKC family has a specific expression profile and is believed to play a distinct role in cells. The protein encoded by this gene is one of the PKC family members. This protein kinase has been reported to be involved in many different cellular functions, such as B cell activation, apoptosis induction, endothelial cell proliferation, and intestinal sugar absorption. Studies in mice also suggest that this kinase may also regulate neuronal functions and correlate fear-induced conflict behavior after stress. Alternatively spliced transcript variants encoding distinct isoforms have been reported. [provided by RefSeq, Jul 2008]</p>

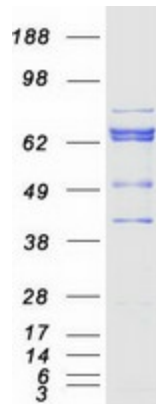
Product images:



Circular map for RC207217



Western blot validation of overexpression lysate (Cat# [LY419133]) using anti-DDK antibody (Cat# [TA50011-100]). Left: Cell lysates from untransfected HEK293T cells; Right: Cell lysates from HEK293T cells transfected with RC207217 using transfection reagent MegaTran 2.0 (Cat# [TT210002]).



Coomassie blue staining of purified PRKCB protein (Cat# [TP307217]). The protein was produced from HEK293T cells transfected with PRKCB cDNA clone (Cat# RC207217) using MegaTran 2.0 (Cat# [TT210002]).