

## Product datasheet for RC207212

### TMEFF1 (NM\_003692) Human Tagged ORF Clone

#### Product data:

Product Type:	Expression Plasmids
Product Name:	TMEFF1 (NM_003692) Human Tagged ORF Clone
Tag:	Myc-DDK
Symbol:	TMEFF1
Synonyms:	C9orf2; CT120.1; H7365; TR-1
Mammalian Cell Selection:	Neomycin
Vector:	pCMV6-Entry (PS100001)
E. coli Selection:	Kanamycin (25 ug/mL)
ORF Nucleotide Sequence:	>RC207212 ORF sequence Red=Cloning site Blue=ORF Green=Tags(s)

TTTTGTAATACGACTCACTATAGGGCGGCCGGAATTCGTCGACTGGATCCGGTACCGAGGAGATCTGCC  
GCC**CGGATCGCC**

ATGGGCGCCGAGCCGCTGAGGCGCCGCTCCGGCTGCCTGCCGCGCTCCGCTCGCCTTCTGCTGCTACA  
CGTCGGTGCTTCTGCTCTTCGCCTTCTCTGCCAGGGAGCCGCGCTCCAACCAGCCCCGGTGGTGG  
CGGCGGACGCGCGGGGACTGTCCCGCGGCAAAGGCAAGAGCATCAACTGCTCAGAATTAATGTGAGG  
GAGTCTGACGTAAGAGTTTGTGATGAGTCATCATGTAATATGGAGGAGTCTGTAAGAAGATGGAGATG  
GTTTGAATGTGCATGCCAATTCAGTGCCATACAAATTATTCCTGTCTGTGGATCAAATGGGGACAC  
TTATCAAAATGAATGCTTCTCAGAAGGGCTGCTTGAAGCACCAGAAAGAGATAACAGTAATAGCAAGA  
GGACCATGCTACTCTGATAATGGATCTGGATCTGGAGAAGGAGAAGGAAGGGTCAGGGGCAGAAAGTTC  
ACAGAAAACACTCCAAGTGTGGACCCTGCAAAATAAAGCTGAGTGTGATGAAGATGCAGAAAATGTTGG  
GTGTGTATGTAATATAGATTGCAGTGGATACAGTTTTAATCCTGTGTGTGCTTCTGATGGGATTCCTAT  
ACAATCCCTGTTTTGTTGAGAAGCATCTGTATAAAGCAAGAACAATGATATAAGGCATCTTGGTC  
ATTGCACAGATACAGATGACACTAGTTTGTGGAAAGAAAGATGATGGACTACAATATCGACCAGATGT  
GAAAGATGCTAGTGATCAAAGAGAAGATGTTTATATTGAAACCACATGCCTTGCCTGAAAACCTCAAT  
GGTTACTGCATCCATGGAAAATGGAATTCATCTATTCTACTCAGAAGGCTTCTGTAGATGTAATCTG  
GCTACTGACAGCACTGTGAAAAGACAGACTTTAGTATTCTCTATGTAGTGCCAAGTAGGCAAAAGCT  
CACTCATGTTCTTATTGAGCAATTATTGGAGCTGTACAGATTGCCATCATAGTAGCAATTGTAATGTGC  
ATAACAAGAAAATGCCCAAAAACAATAGAGGACGTCGACAGAAGCAAAACCTAGGTCATTTTACTTCAG  
ATACGTATCCAGAATGGTT

**ACGCGT**ACGCGGCCGCTCGAGCAGAAACTCATCTCAGAAGAGGATCTGGCAGCAAATGATATCCTGGATT  
ACAAGGATGACGACGATAAGGTTTAA



[View online »](#)

**Protein Sequence:** >RC207212 protein sequence  
Red=Cloning site Green=Tags(s)

MGAAAAEAPLRLPAAPPLAFCCYTSVLLLFASFSLPGSRASNQPPGGGGSGGDCPGGKGSINCSELNVR  
 ESDVVRVDESSCKYGGVCKEDGDGLKACQFQCHTNYIPVCGSNGDTYQNECFLRRAACKHQKEITVIAR  
 GPCYSDNGSGSGEGEEEGSGAEVHRKHSKCGPKYKAECDEDAENVGCVCNIDCSGYSFNPVCASDGGSSY  
 NNPCFVREASCIKQEIQIDIRHLGHCTD TDDTSLLGKKDDGLQYRPDVK D ASDQREDVYIGNHMPCPENLN  
 GYCIHGKCEFIYSTQKASCRCESGYTGQHEKTD F SILYVVP SRQKLTHVLIAAIIGAVQIAIIVAIIVMC  
 ITRKCPKNNRGRQKQLGHFTSDTSSRMV

TRTRPLEQKLISEEDLAANDILDYKDDDDKV

**Chromatograms:** [https://cdn.origene.com/chromatograms/mk6041\\_c03.zip](https://cdn.origene.com/chromatograms/mk6041_c03.zip)

**Restriction Sites:** SgfI-MluI

**Cloning Scheme:**



\* The last codon before the Stop codon of the ORF

**ACCN:** NM\_003692

**ORF Size:** 1140 bp

**OTI Disclaimer:** The molecular sequence of this clone aligns with the gene accession number as a point of reference only. However, individual transcript sequences of the same gene can differ through naturally occurring variations (e.g. polymorphisms), each with its own valid existence. This clone is substantially in agreement with the reference, but a complete review of all prevailing variants is recommended prior to use. [More info](#)

**OTI Annotation:** This clone was engineered to express the complete ORF with an expression tag. Expression varies depending on the nature of the gene.

**Components:** The ORF clone is ion-exchange column purified and shipped in a 2D barcoded Matrix tube containing 10ug of transfection-ready, dried plasmid DNA (reconstitute with 100 ul of water).

**Reconstitution Method:**

1. Centrifuge at 5,000xg for 5min.
2. Carefully open the tube and add 100ul of sterile water to dissolve the DNA.
3. Close the tube and incubate for 10 minutes at room temperature.
4. Briefly vortex the tube and then do a quick spin (less than 5000xg) to concentrate the liquid at the bottom.
5. Store the suspended plasmid at -20°C. The DNA is stable for at least one year from date of shipping when stored at -20°C.

**RefSeq:** [NM\\_003692.2](#), [NP\\_003683.2](#)

**RefSeq Size:** 2501 bp

**RefSeq ORF:** 1143 bp

**Locus ID:** 8577

**UniProt ID:** [Q8IYR6](#)

**Cytogenetics:** 9q31.1

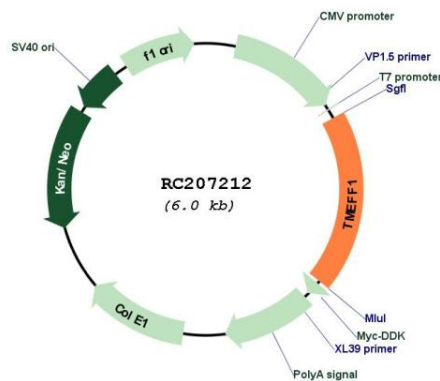
**Domains:** kazal

**Protein Families:** Transmembrane

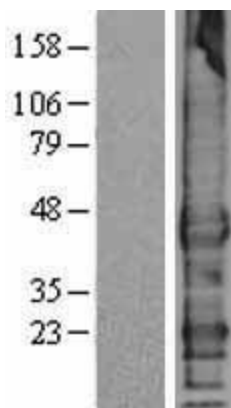
**MW:** 40.9 kDa

**Gene Summary:** May inhibit NODAL and BMP signaling during neural patterning (By similarity). May be a tumor suppressor in brain cancers.[UniProtKB/Swiss-Prot Function]

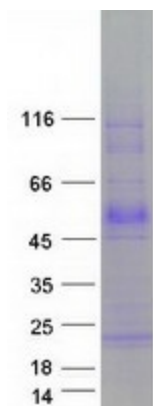
### Product images:



Circular map for RC207212



Western blot validation of overexpression lysate (Cat# [LY401231]) using anti-DDK antibody (Cat# [TA50011-100]). Left: Cell lysates from untransfected HEK293T cells; Right: Cell lysates from HEK293T cells transfected with RC207212 using transfection reagent MegaTran 2.0 (Cat# [TT210002]).



Coomassie blue staining of purified TMEFF1 protein (Cat# [TP307212]). The protein was produced from HEK293T cells transfected with TMEFF1 cDNA clone (Cat# RC207212) using MegaTran 2.0 (Cat# [TT210002]).