

Product datasheet for **RC207206**

RAB28 (NM_001017979) Human Tagged ORF Clone

Product data:

Product Type:	Expression Plasmids
Product Name:	RAB28 (NM_001017979) Human Tagged ORF Clone
Tag:	Myc-DDK
Symbol:	RAB28
Synonyms:	CORD18
Mammalian Cell Selection:	Neomycin
Vector:	pCMV6-Entry (PS100001)
E. coli Selection:	Kanamycin (25 ug/mL)
ORF Nucleotide Sequence:	>RC207206 ORF sequence Red=Cloning site Blue=ORF Green=Tags(s)

TTTTGTAATACGACTCACTATAGGGCGCCGGGAATTCGTCGACTGGATCCGGTACCGAGGAGATCTGCC
GCC**CGATCGCC**

ATGTCGGACTCTGAGGAGGAGAGTCAGGACCGCAACTGAAAAATCGTCGTGCTGGGGACGGCGCCTCCG
GGAAGACCTCCTTAACACTACGTGTTTTGCTCAAGAACTTTGGGAAACAGTACAAACAACTATAGGACT
GGATTTCTTTTGAAGGATAACATTGCCAGGAACTTGAATGTTACCTTCAAATTTGGGATATAGGA
GGCAGACAATAGGAGGCAAAATGTTGGATAAATATATCTATGGAGCACAGGGAGTCCTCTTGGTATATG
ATATTACAAATTATCAAAGCTTTGAGAATTTAGAAGATTGGTATACTGTGGTGAAGAAAGTGAGCGAGGA
GTCAGAAACTCAGCCACTGGTTGCCTTGGTAGGCAATAAAATTGATTTGGAGCATATGCGAACAATAAAA
CCTGAAAAACACTTACGGTTTTGCCAGGAAAAATGGTTTTAGTAGCCACTTTGTCTCAGCCAAGACAGGAG
ACTCTGTCTTCTGTGCTTTAGAAAAGTTGCTGCTGAAATCCTTGGGATCAAATTAACAAAGCAGAAAT
AGAACAGTCACAGAGGGTGGTGAAGGCAGATATTGTAACATAACCAGGAACCTATGTCAAGGACTGTT
AACCTCCTAGAAGCTCTATGTGTGCAGTTCAG

ACGCGTACGCGGCGCTCGAGCAGAAACTCATCTCAGAAGAGGATCTGGCAGCAAATGATATCCTGGATT
ACAAGGATGACGACGATAAGGTTTAA



[View online »](#)

Protein Sequence: >RC207206 protein sequence
Red=Cloning site Green=Tags(s)

```
MSDSEESQDRQLKIVVLGDGASGKTSLLTTCFAQETFQKQYKQTIGLDFFLRITLPGNLNVTLQIWDIG
GQTIIGGKMLDKYIYGAQGVLLVYDITNYQSFENLEDWYTVVKKVSESESQPLVALVGNKIDLEHMRTIK
PEKHLRFQENGFSSHFVSAKTGDSVFLCFQKVAEILGIKLNKAEIEQSQRVVKADIVNQNQEPMSRTV
NPPRSSMCAVQ
```

TRTRPLEQKLISEEDLAANDILDYKDDDDKV

Chromatograms: https://cdn.origene.com/chromatograms/mk6339_d09.zip

Restriction Sites: SgfI-MluI

Cloning Scheme:



ACCN: NM_001017979

ORF Size: 663 bp

OTI Disclaimer: The molecular sequence of this clone aligns with the gene accession number as a point of reference only. However, individual transcript sequences of the same gene can differ through naturally occurring variations (e.g. polymorphisms), each with its own valid existence. This clone is substantially in agreement with the reference, but a complete review of all prevailing variants is recommended prior to use. [More info](#)

OTI Annotation: This clone was engineered to express the complete ORF with an expression tag. Expression varies depending on the nature of the gene.

Components: The ORF clone is ion-exchange column purified and shipped in a 2D barcoded Matrix tube containing 10ug of transfection-ready, dried plasmid DNA (reconstitute with 100 ul of water).

Reconstitution Method:

1. Centrifuge at 5,000xg for 5min.
2. Carefully open the tube and add 100ul of sterile water to dissolve the DNA.
3. Close the tube and incubate for 10 minutes at room temperature.
4. Briefly vortex the tube and then do a quick spin (less than 5000xg) to concentrate the liquid at the bottom.
5. Store the suspended plasmid at -20°C. The DNA is stable for at least one year from date of shipping when stored at -20°C.

RefSeq: [NM_001017979.3](#)

RefSeq Size: 1732 bp

RefSeq ORF: 666 bp

Locus ID: 9364

UniProt ID: [P51157](#)

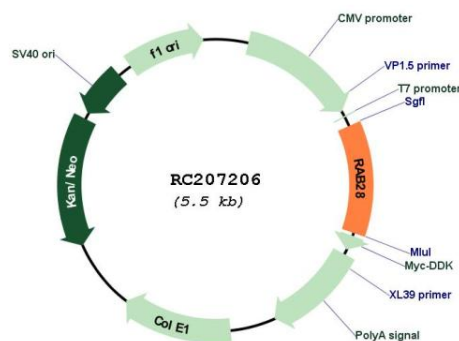
Cytogenetics: 4p15.33

Protein Families: Druggable Genome

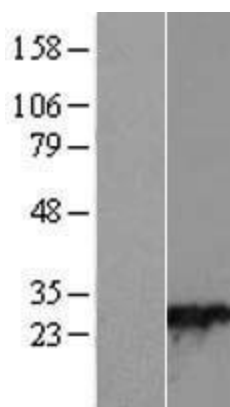
MW: 24.8 kDa

Gene Summary: This gene encodes a member of the Rab subfamily of Ras-related small GTPases. The encoded protein may be involved in regulating intracellular trafficking. Alternative splicing results in multiple transcript variants. Pseudogenes of this gene are found on chromosomes 9 and X. [provided by RefSeq, Apr 2009]

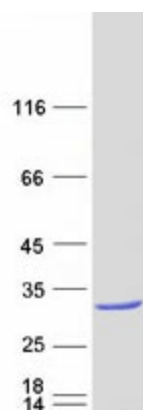
Product images:



Circular map for RC207206



Western blot validation of overexpression lysate (Cat# [LY422223]) using anti-DDK antibody (Cat# [TA50011-100]). Left: Cell lysates from untransfected HEK293T cells; Right: Cell lysates from HEK293T cells transfected with RC207206 using transfection reagent MegaTran 2.0 (Cat# [TT210002]).



Coomassie blue staining of purified RAB28 protein (Cat# [TP307206]). The protein was produced from HEK293T cells transfected with RAB28 cDNA clone (Cat# RC207206) using MegaTran 2.0 (Cat# [TT210002]).