

Product datasheet for RC207198L1

YY1 (NM_003403) Human Tagged Lenti ORF Clone

Product data:

Product Type:	Expression Plasmids
Product Name:	YY1 (NM_003403) Human Tagged Lenti ORF Clone
Tag:	Myc-DDK
Symbol:	YY1
Synonyms:	DELTA; GADEVS; INO80S; NF-E1; UCRBP; YIN-YANG-1
Mammalian Cell Selection:	None
Vector:	pLenti-C-Myc-DDK (PS100064)
E. coli Selection:	Chloramphenicol (34 ug/mL)
ORF Nucleotide Sequence:	The ORF insert of this clone is exactly the same as(RC207198).
Restriction Sites:	SgfI-MluI
Cloning Scheme:	

Cloning sites used for ORF Shuttling:



* The last codon before the Stop codon of the ORF.

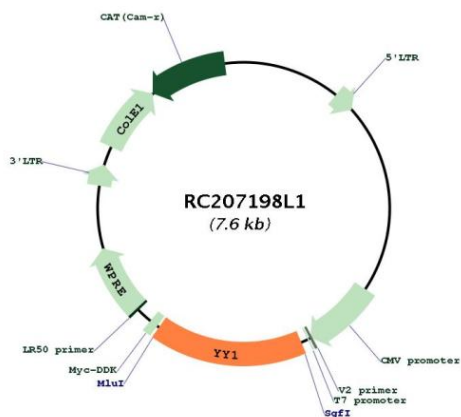
ACCN:	NM_003403
ORF Size:	1242 bp



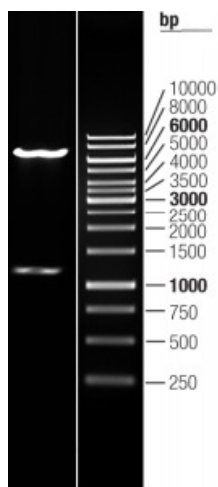
[View online »](#)

OTI Disclaimer:	The molecular sequence of this clone aligns with the gene accession number as a point of reference only. However, individual transcript sequences of the same gene can differ through naturally occurring variations (e.g. polymorphisms), each with its own valid existence. This clone is substantially in agreement with the reference, but a complete review of all prevailing variants is recommended prior to use. More info
OTI Annotation:	This clone was engineered to express the complete ORF with an expression tag. Expression varies depending on the nature of the gene.
Components:	The ORF clone is ion-exchange column purified and shipped in a 2D barcoded Matrix tube containing 10ug of transfection-ready, dried plasmid DNA (reconstitute with 100 ul of water).
Reconstitution Method:	<ol style="list-style-type: none">1. Centrifuge at 5,000xg for 5min.2. Carefully open the tube and add 100ul of sterile water to dissolve the DNA.3. Close the tube and incubate for 10 minutes at room temperature.4. Briefly vortex the tube and then do a quick spin (less than 5000xg) to concentrate the liquid at the bottom.5. Store the suspended plasmid at -20°C. The DNA is stable for at least one year from date of shipping when stored at -20°C.
RefSeq:	NM_003403.3
RefSeq Size:	3159 bp
RefSeq ORF:	1245 bp
Locus ID:	7528
UniProt ID:	P25490
Cytogenetics:	14q32.2
Domains:	zf-C2H2
Protein Families:	Druggable Genome, Transcription Factors
MW:	44.7 kDa
Gene Summary:	YY1 is a ubiquitously distributed transcription factor belonging to the GLI-Kruppel class of zinc finger proteins. The protein is involved in repressing and activating a diverse number of promoters. YY1 may direct histone deacetylases and histone acetyltransferases to a promoter in order to activate or repress the promoter, thus implicating histone modification in the function of YY1. [provided by RefSeq, Jul 2008]

Product images:



Circular map for RC207198L1



Double digestion of RC207198L1 using SgfI and MluI