

## Product datasheet for RC207190

### RIM2 (RIMS2) (NM\_014677) Human Tagged ORF Clone

#### Product data:

Product Type:	Expression Plasmids
Product Name:	RIM2 (RIMS2) (NM_014677) Human Tagged ORF Clone
Tag:	Myc-DDK
Symbol:	RIM2
Synonyms:	CRSDS; OBOE; RAB3IP3; RIM2
Mammalian Cell Selection:	Neomycin
Vector:	pCMV6-Entry (PS100001)
E. coli Selection:	Kanamycin (25 ug/mL)
ORF Nucleotide Sequence:	>RC207190 ORF sequence Red=Cloning site Blue=ORF Green=Tags(s)

TTTTGTAATACGACTCACTATAGGGCGGCCGGAATTCGTCGACTGGATCCGGTACCGAGGAGATCTGCC  
GCC**CGATCGCC**

ATGCAATTTGAGACATTGCGCCAGGTCTGCAATTCTGTTTTATCTCATTTCATGGGGTTTTTCATCCC  
CACCAAATATCTTACAAAATGAGCTTTTTGGACAAACACTGAACAATGCAAGGAAAAGAAGCCCATCTGT  
GTCCAGAGATCAGAATAGAAGATACGACCAAAGGGAAGAAAGAGAGGAATATTCACAGTATGCTACTTCCG  
GATACCGCAATGCCTAGATCTCCATCAGATTATGCTGATAGGCGATTTCAACATGAACCTCAGTTTTATG  
AAGACTCTGATCATTTAAGTTATAGGGACTCCAACAGGAGAAGTCATAGGCATTCCAAGAATATATTGT  
AGATGATGAGGATGTGGAAGCAGAGATGAATACGAAAGGCAAAGGAGAGAGGAAGAGTACCAGTCCAGC  
TACCGAAGTGATCCGAATTTGGCCCGTTATCCAGTAAAGCCACAACCCTATGAAGAACAATGCGGATCC  
ATGCTGAAGTGTCCCAGCACGGCATGAGAGAAGGCATAGTGATGTTTCTTTGGCAAATGCTGATCTGGA  
AGATTCAGGATTTCTATGCTAAGGATGGATCGACCATCAAGGCAAAGATCTATATCAGAACGTAGAGCT  
GCCATGGAAAATCAGCGATCTTATTCAATGAAAGAACTCGAGAGGCTCAGGGACCAAGTTCTTATGCAC  
AAAGGACCACAACCATAGTCCTCCTACCCCAAGGAGGAGTCCACTACCCATAGATAGACCAGACTTGAG  
GCGTACTGACTCACTACGGAACAGCACCATTAGATCCTAGCTCTGCTGAAGAAAAACAAAACGGGAA  
AAAATGGAAACAATGTTAAGGAATGATTCTCTCAGTTCCAGCCGGTCAGAGTCAGTGAGACCTCCACCAC  
CAAAGCCTCATAAATCAAAGAAAGGCGGTAAAATGCGCCAGATTTGTTGAGCAGTTTCAGAGGAGGAATT  
GGCTTCCACGCTGAATATAACAAGTTGTGATGATGTTGAGATTGAAAGTGAAGTGAAGTGAAGGAAAGGA  
GACATGGATTACAACCTGGTTGGATCATACGCTTTGGCATAGCAGTGAGGCATCCCCAATGTCTTTGCACC  
CTGTAACCTGGCAACCATCTAAAGATGGAGATCGTTAATTGGTCGCATTTTATTAATAAGCGCTATAA  
AGATGGAAGTGTACCTCGAGATTCAGGAGCAATGCTTGGCTTGAAGGTTGTAGGAGGAAAGATGACTGAA  
TCAGGTCGGCTTTGTGCATTTATTAATAAGTAAAAAAGGAAGTTTAGCTGATACTGTAGGACATCTTA  
GACCAGGTGATGAAGTATTAGAATGGAATGGAAGACTACTGCAAGGAGCCACATTTGAGGAAGTGTACAA  
CATCATTCTAGAATCAAACCTGAACCACAAGTAGAAGTTGTAGTTTCAAGGCCTATTGGAGATATACCG



[View online >](#)

CGAATACCTGATAGCACACATGCACAACCTGGAGTCCAGTCTAGCTCCTTTGAATCTCAAAAAATGGATC  
GTCCTTCTATTTCTGTTACCTCTCCCATGAGTCCCTGGAATGTTGAGGGATGTCCCACAGTCTTATCAGG  
ACAACCTTCAATAAAACTATGGTTTGACAAGGTTGGTCACCAATTAATAGTTACAATTTTGGGAGCAAAA  
GATCTCCCTTCCAGGGAAGATGGGAGGCCAAGGAATCCTTATGTTAAAATTTACTTTCTCCAGACAGAA  
GTGATAAAAAACAAGAGAAGAACTAAAACAGTAAAGAAAACATTGGAACCCAAATGGAACCAACATTCAT  
TTATTCTCCAGTCCACCGAAGAGAATTTGCGGAACGAATGCTAGAGATTACCTTTGGGATCAAGCTCGT  
GTTGAGAGGAAGAAAGTGAATTTAGGGGAGATTTTAAATGAATTAGAAACAGCATTATTAGATGATG  
AGCCACATTGGTACAACTTCAGACGCATGATGTCTTTCATTGCCACTTCCCCACCTTCTCCATATAT  
GCCACGAAGACAGCTCCATGGAGAGAGCCAAACCGGAGGTTGCAAAGGTCAAAGAGAATAAGTGATAGT  
GAAGTCTCTGACTATGACTGTGATGATGGAATGGTGTAGTATCAGATTATCGACATGATGGTCGAGATC  
TTCAAAGCTCAACATTATCAGTGCCAGAACAAGTAATGTCATCAAACCACTGTTCCACCATCAGGGTCTCC  
TCATCGAGTAGATGTTATAGGAAGGACTAGATCATGGTCACCCAGTGTCCCTCTCCACAAAGTCGGAAT  
GTGGAACAGGGGCTTCGAGGGACCCGACTATGACCGGACATTATAATACAATTAGCCGAATGGACAGAC  
ATCGTGCATGGATGACCATTATCTCCAGATAGAGACAGTCATTTTCTACTCTACCTCGTCCAGATA  
CAGTCAGACCATTGACCATCATCACAGGATGGCAGGGATTGTGAAGCAGCAGATAGACAGCCATATCAC  
AGATCCAGATCAACAGAACAACGGCCTCTCCTTGAGCGGACCACCACCCGCTCCAGATCCACTGAACGTC  
CTGATACAAACCTCATGAGGTCGATGCCTTCATTAATGACTGGAAGATCTGCCCTCCTTCACTGCCTT  
ATCGAGGTCTCATCCTCGTACTGGTCTGTCCAGACAAGCCCATCAAGTACTCCAGTCGACAGGACGAAGG  
GGCCGACAGCTTCCACAGCTTCCACAAAGGGAACGTTGGATAGAAAAGCAGGAGGTAAAAAACTAAGGA  
GCACTGTCAAAGAAGTACAGAAACAGGCTGGCCGTGGAATGAGGAACTGGATGACTCGACAGGCAAG  
CCGAGAGTCTACAGATGGTAGCATGAACAGCTACAGCTCAGAAGGAAATCTGATTTTCCCTGGTGTTCGC  
TTGGCCTCTGATAGCCAGTTCAGTGATTTCTGGATGGCCTTGGCCTGCTCAGCTAGTGGGACGCCAGA  
CTCTGGCAACACCTGCAATGGGTGACATTCAGGTAGGAATGATGGACAAAAGGGACAGCTGGAGGTAGA  
AATCATCCGGGCCGTGGCCTTGTGAAAACCAGGTTCCAAGACTGCCAGCACCGTATGTAAGAGTG  
TATCTATTAGATAACGGAGTCTGCATAGCCAAAAAGAAAACAAAAGTGGCAAGAAAAACGCTGGAACCCC  
TTTACCAGCAGCTATTATCTTTGAAAGAGAGTCCACAAGGAAAAGTTTTACAGATCATCGTCTGGGAGAG  
TTATGGCCGCATGGATCACAATCTTTTATGGGAGTGGCCAGATACTTTTAGATGAACTAGAGCTATCC  
AATATGGTGATCGGATGGTTCAAACCTTTCCACCTTCTCCCTAGTAGATCCAACCTTGGCCCTCTGA  
CAAGAAGAGCTTCCAATCATCTCTGAAAGTTCAACTGGACCTTCTACTCTCGTTCA

ACGCGTACGCGGCCGCTCGAGCAGAACTCATCTCAGAAGAGGATCTGGCAGCAAATGATATCCTGGATT  
ACAAGGATGACGACGATAAGGTTTAA

**Protein Sequence:** >RC207190 protein sequence  
 Red=Cloning site Green=Tags(s)

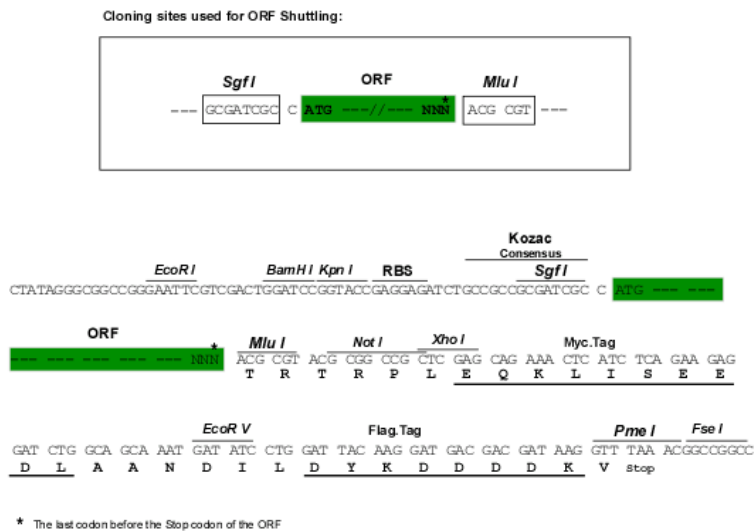
MQFETLRQVCNSVL SHFHGVFSSPPNILQNELFGQTLNNARKRSPSVSRDQNRRYDQREEREYSQYATS  
 DTAMPSPSDYADRRFQHEPQFYEDSDHL SYRDSNRRSHRHSKEYIVDDEDVESRDEYERQRREEEYQSR  
 YRSDPNLARYVPKQPYEEQMRIHAEVSRARHERRHSDVSLANADLEDSRISMLRMDRPSRQRSIERRA  
 AMENQRSYSMERTREAAQGPSSYAQRRTTNHSPPTPRRSPLPIDRPDLRRTDSLRLKQHLLDPSAVRKTRE  
 KMETMLRNDLS SDRSESVRPPPPKPKHKS KGGKMRQISLSSSEEELASTPEYTS CDDVEIESESVSEKG  
 DMDYNWLDHTSWHSSEASPMSLHPVTWQPSKDGDR LIGRILLNKRLKDG SVPRDSGAMLGLKVVGKMT E  
 SGRLCAFITKVKKGLADTVGHLRPGDEVLEWNGRLLQGATFEEVYNIILESKPEPQVELV VSRPIGDIP  
 RIPDSTHAQLESSSSSFESQKMDRPSISVTSMPSPGMLRDVPQFLSGQLSIKLFWDKVGHLIVTILGAK  
 DLPSREDGRPRNPYVKIYFLPDRSDKNKRRTKT VKKTLEPKWNQTFIYSPVHRREFRERMLEITLWDQAR  
 VREEESEFLGEILIELETALLDDEPHWYKLQTHDVSSLPLPHSPYMPRRQLHGESPTRRLQRSKRISDS  
 EVSDYDCDDGIGVVSDYRHDGRDLQSSTLSVPEQVMSSNHCS PSGSPHRVDVIGRTRSWSPVPPPQSRN  
 VEQGLRGRTRMTGHYNTISRMDRHRVMDDHYS PDRD SHFLTLP RSRYSTIDHHHRDGRDCEAADRQPYH  
 RSRSTEQRPLLERTTTRSRSTERPDTNLMRSMPSLMTGRSAPPSPALSRSHPR TGSVQTSPTSSTPVAGR  
 GRQLPQLPPKGTLDKAGGKLRSTVQRSTETGLAVEMRNMTRQASRESTDGSMNSYSSEGNLIFPGVR  
 LASDSQFSDFLDGLGPAQLVGRQTLATPAMGDIQVGMMDKKGQLEVEIIRARGLVVKPGSKTLPAPYVKV  
 YLLDNGVCIAKKTKVARKTLEPLYQQLL SFEESPQGV LQIIVWGDYGRMDHKSFMGVAQILLDELELS  
 NMVIGWFKLFPSSSLVDPTLAPL TRRASQSSLESSTG PYSYRS

TRTRPLEQKLISEEDLAANDILDYKDDDDKV

**Chromatograms:** [https://cdn.origene.com/chromatograms/mk6678\\_h07.zip](https://cdn.origene.com/chromatograms/mk6678_h07.zip)

**Restriction Sites:** SgfI-MluI

**Cloning Scheme:**

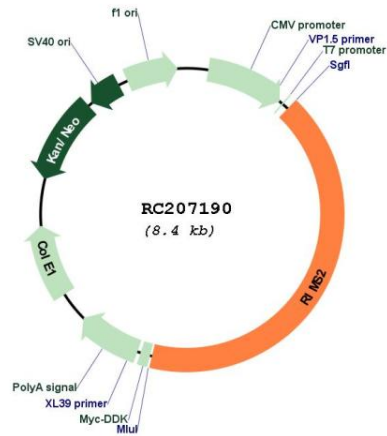


**ACCN:** NM\_014677

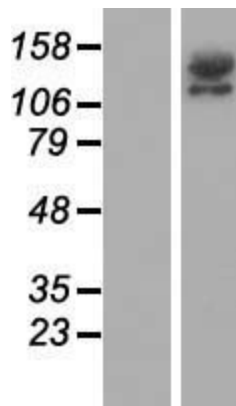
**ORF Size:** 3489 bp

<b>OTI Disclaimer:</b>	The molecular sequence of this clone aligns with the gene accession number as a point of reference only. However, individual transcript sequences of the same gene can differ through naturally occurring variations (e.g. polymorphisms), each with its own valid existence. This clone is substantially in agreement with the reference, but a complete review of all prevailing variants is recommended prior to use. <a href="#">More info</a>
<b>OTI Annotation:</b>	This clone was engineered to express the complete ORF with an expression tag. Expression varies depending on the nature of the gene.
<b>Components:</b>	The ORF clone is ion-exchange column purified and shipped in a 2D barcoded Matrix tube containing 10ug of transfection-ready, dried plasmid DNA (reconstitute with 100 ul of water).
<b>Reconstitution Method:</b>	<ol style="list-style-type: none"><li>1. Centrifuge at 5,000xg for 5min.</li><li>2. Carefully open the tube and add 100ul of sterile water to dissolve the DNA.</li><li>3. Close the tube and incubate for 10 minutes at room temperature.</li><li>4. Briefly vortex the tube and then do a quick spin (less than 5000xg) to concentrate the liquid at the bottom.</li><li>5. Store the suspended plasmid at -20°C. The DNA is stable for at least one year from date of shipping when stored at -20°C.</li></ol>
<b>Note:</b>	Plasmids are not sterile. For experiments where strict sterility is required, filtration with 0.22um filter is required.
<b>RefSeq:</b>	<a href="#">NM_014677.2</a> , <a href="#">NP_055492.2</a>
<b>RefSeq Size:</b>	6420 bp
<b>RefSeq ORF:</b>	3492 bp
<b>Locus ID:</b>	9699
<b>UniProt ID:</b>	<a href="#">Q9UQ26</a>
<b>Cytogenetics:</b>	8q22.3
<b>Domains:</b>	C2, PDZ
<b>MW:</b>	132.8 kDa
<b>Gene Summary:</b>	The protein encoded by this gene is a presynaptic protein that interacts with RAB3, a protein important for normal neurotransmitter release. The encoded protein can also bind several other synaptic proteins, including UNC-13 homolog B, ELKS/Rab6-interacting/CAST family member 1, and synaptotagmin 1. This protein is involved in synaptic membrane exocytosis. Polymorphisms in this gene have been associated with degenerative lumbar scoliosis. [provided by RefSeq, Feb 2017]

Product images:



Circular map for RC207190



Western blot validation of overexpression lysate (Cat# [LY415131]) using anti-DDK antibody (Cat# [TA50011-100]). Left: Cell lysates from untransfected HEK293T cells; Right: Cell lysates from HEK293T cells transfected with RC207190 using transfection reagent MegaTran 2.0 (Cat# [TT210002]).