

Product datasheet for **RC207189**

RHOBTB3 (NM_014899) Human Tagged ORF Clone

Product data:

Product Type:	Expression Plasmids
Product Name:	RHOBTB3 (NM_014899) Human Tagged ORF Clone
Tag:	Myc-DDK
Symbol:	RHOBTB3
Mammalian Cell Selection:	Neomycin
Vector:	pCMV6-Entry (PS100001)
E. coli Selection:	Kanamycin (25 ug/mL)



[View online »](#)

ORF Nucleotide Sequence:

>RG207189 representing NM_014899
 Red=Cloning site Blue=ORF Green=Tags(s)

TTTTGTAATACGACTCACTATAGGGCGGCCGGAATTCGTCGACTGGATCCGGTACCGAGGAGATCTGCC
 GCC**CGATCGCC**

ATGTCCATCCACATCGTGGCGCTGGGGAACGAGGGGGACACATTCACCAGGACAACCAGCCGTCGGGGC
 TTATCCGCACTTACCTGGGGAGAAGCCCTCTGGTCTCCGGGACGAGAGCAGCTTGTGCTGAACCGCGC
 CAGCACGGTCGCGCGTCCGGTGTTCACCGAGTATCAGGCCAGTGCCTTTGGGAATGTCAAGCTGGTGGTC
 CACGACTGTCCCGTCTGGGACATATTTGACAGTGATTGGTACACTTCTCGAAATCTAATTGGGGGCGCTG
 ACATCATTGTGATCAAATAACAAGTTAATGACAAGTTTTTCATTCCATGAAGTAAAGGATAATTATATTCC
 AGTGATAAAAAGAGCATTAAATTCAGTTCAGTAATTATTGCTGCTGTTGGTACCAGACAAAATGAAGAG
 TTACCTTGTACATGCCACTATGTACCTCAGACAGAGGGAGCTGTGTAGTACAAGTGAAGGATCCAAC
 TTGCAAAAGAACTAGGAGCAACCTATCTTGAACCCACAGCCTTGATGACTTCTACATAGGAAAGTATTT
 TGGAGGAGTGTGGAGTATTTATGATTCAAGCCTTAAATCAGAAGACAAGTGAAGAAAATGAAGAAAAGA
 AAAATGAGCAACTCCTTTTCATGGAATTAGACCCTCAACTTGAACAACCCAGAAAAAATGCCTGTCTTAA
 AGGCTGAAGCGTCACATTATAACTCTGACTTAAATAAATTGCTGTTCTGCTGCCAGTGTGTGGACGTGGT
 ATTTTATAACCCCGATTTAAAGAAAGTTGTAGAGGCCACAAGATCGTTCTCTGCGCTGTAAAGCCATGTT
 TTCATGCTGCTTTTCAATGTGAAGAGTCCCACTGACATTCAGGATTCCAGTATCATCCGAACTACCCAGG
 ATCTTTTTGCTATAAACAGAGATACTGCATTTCCAGGTGCTAGCCATGAATCTTCAGGCAACCCACCATT
 ACGAGTCATTGTTAAAGACGCCCTCTTCTGTTCTGTTTATCAGACATCCTTCGCTTCATTTATTCAGGT
 GCTTTTTCAGTGGGAAGAATTGGAAGAAGATATCAGGAAGAAGTTGAAAGATTCTGGGGATGTTTCAAATG
 TAATCGAGAAAAGTTAAATGCATTTTAAAAACACCAGAAAGATTAATTGCCTAAGGAATTGCAAAACCTA
 TCAAGCCAGAAAACCTTTGTGGTTTTATAACACTTCCCTCAAGTTTTTCTTAATAAGCCGATGCTTGCC
 GATGTTGTCTTCGAAATTCAGGTACGACAGTCCAGCCACAGGGCCATCCTGGTGGCCGTTGTGAAG
 TGATGGCAGCCATGTTTAAATGGTAATTACATGGAAGCAAAGAGTGTCTGATTCCCGTTTATGGTGTTC
 CAAAGAGACTTTCTGTCAATTTTAGAATACCTGTACACAGACTCCTGCTGCCAGCTGGCATATTCAG
 GCCATGTGTCTCCTGATCTGTGCCGAGATGTACCAAGTGTCCAGACTGCAGCACATCTGTGAGCTGTTCA
 TCATTACCCAGCTGCAGAGCATGCAAGCAGGAACTGGCATCCATGAACCTTGATAGTTGACCTGCT
 TAAAAAGGCCAAGTTTACCCTCTGATTGCCTTTCACTGGCTACTTCATTTTCATTGCTACTAACTAC
 CTCATCTTCAGTCAAAGCCTGAATTTTCAGGATCTTTCAGTGGAAAGACGCAGTTTTGTTGAAAAGCACA
 GATGGCCGTCGAATATGTAAGCAGCTTGCAGGAATACAGGAAGTATATTCCTCCCGAAATGTCG
 TTGCTTAGTAATG

ACGCGTACGCGGCCGCTCGAG – GFP Tag – GTTTAA

Chromatograms:

https://cdn.origene.com/chromatograms/mk6235_f11.zip

Restriction Sites:

Sgfl-Mlul

Cloning Scheme:


ACCN: NM_014899

ORF Size: 1833 bp

OTI Disclaimer: The molecular sequence of this clone aligns with the gene accession number as a point of reference only. However, individual transcript sequences of the same gene can differ through naturally occurring variations (e.g. polymorphisms), each with its own valid existence. This clone is substantially in agreement with the reference, but a complete review of all prevailing variants is recommended prior to use. [More info](#)

OTI Annotation: This clone was engineered to express the complete ORF with an expression tag. Expression varies depending on the nature of the gene.

Components: The ORF clone is ion-exchange column purified and shipped in a 2D barcoded Matrix tube containing 10ug of transfection-ready, dried plasmid DNA (reconstitute with 100 ul of water).

Reconstitution Method:

1. Centrifuge at 5,000xg for 5min.
2. Carefully open the tube and add 100ul of sterile water to dissolve the DNA.
3. Close the tube and incubate for 10 minutes at room temperature.
4. Briefly vortex the tube and then do a quick spin (less than 5000xg) to concentrate the liquid at the bottom.
5. Store the suspended plasmid at -20°C. The DNA is stable for at least one year from date of shipping when stored at -20°C.

Note: Plasmids are not sterile. For experiments where strict sterility is required, filtration with 0.22um filter is required.

RefSeq: [NM_014899.2](#), [NP_055714.2](#)

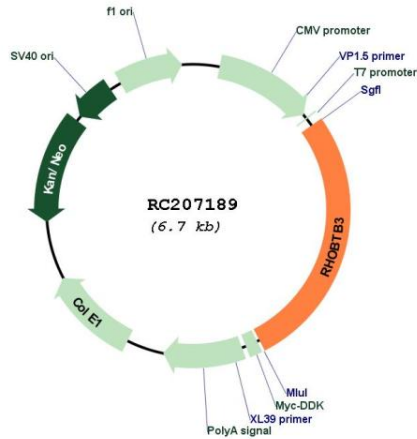
RefSeq Size: 5566 bp

RefSeq ORF: 1836 bp

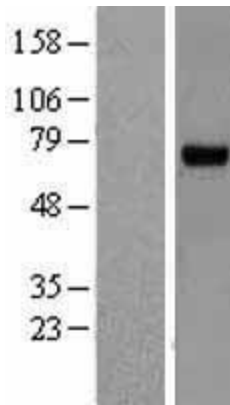
Locus ID: 22836

UniProt ID: [O94955](#)
Cytogenetics: 5q15
Domains: BTB
MW: 69.4 kDa
Gene Summary: RHOBTB3 is a member of the evolutionarily conserved RHOBTB subfamily of Rho GTPases. For background information on RHOBTBs, see RHOBTB1 (MIM 607351).[supplied by OMIM, Apr 2004]

Product images:



Circular map for RC207189



Western blot validation of overexpression lysate (Cat# [LY414950]) using anti-DDK antibody (Cat# [TA50011-100]). Left: Cell lysates from untransfected HEK293T cells; Right: Cell lysates from HEK293T cells transfected with RC207189 using transfection reagent MegaTran 2.0 (Cat# [TT210002]).