

Product datasheet for **RC207188**

DZIP1 (NM_198968) Human Tagged ORF Clone

Product data:

Product Type:	Expression Plasmids
Product Name:	DZIP1 (NM_198968) Human Tagged ORF Clone
Tag:	Myc-DDK
Symbol:	DZIP1
Synonyms:	DZIP; DZIPt1
Mammalian Cell Selection:	Neomycin
Vector:	pCMV6-Entry (PS100001)
E. coli Selection:	Kanamycin (25 ug/mL)



[View online »](#)

ORF Nucleotide Sequence:

>RC207188 ORF sequence
 Red=Cloning site Blue=ORF Green=Tags(s)

TTTTGTAATACGACTCACTATAGGGCGGCCGGGAATTCGTCGACTGGATCCGGTACCGAGGAGATCTGCC
 GCC**CGCATCGCC**

ATGCAAGCTGAGGCAGCGGATTGGTTTTCAAGCATGCCCTTCCAGAAGCATGTCTACTACCCGCTCGCCA
 GCGGCCAGAGGGGCCGACGTCGCTGTGGCCGCCCGCGGGTGGCGCCTCCATGGCTGTGCGCC
 CCCAGCGCGGCTTCGGGGCCCTGCCCTTCTCCAGTTCAGGCCGCGGTGGAGAGTGTGGACTGGCGG
 CGGCTGAGCGCCATCGACGTGGACAAGGTGGCGGGGCTGTGGACGTGCTGACGCTGCAGGAGAATCA
 TGAACATCACCTTCTGCAAGCTGGAAGACGAGAAGTGCCCACTGCCAGTGGGGGTGGACCCGGTGT
 GCTGAAGCTCATCCGCTGGCGCAGTTCACCATCGAGTACTTGTGCACTCACAAGAGTTCCTCACCTCG
 CAGCTGCACACCTGGAGGAGCGGCTGCGCCTGAGCCACTGCGACGGCGAGCAGAGCAAGAAGTGTCTA
 CCAAGCAGCGGGGAGATCAAGACGCTCAAGGAAGTGCAAACGCCGAAGAAGATGATCTCCACCCA
 GCAGCTGATGATCGAGGCCAAAGCCAATTATTACAGTGCATTTTTGTGACAAGCCTTTATGAACCAA
 GCTTTTCTACAAAGTCAATTCAACGCCCCACTGAAGAAAATTTCTATTTTGTAGTATCAGAAAATG
 CACAGATTGAGAAGCTCCGGAGTGAGATCGTCGATTGAAGGAAGAGCTGCAGCTCACCAGTCTGAGCT
 AGAGGCTGCACACCATGCCAGTGCAGTCAGATTCTCCAAGGAATATGAAATGCAGAAAACAAAAGAGGAA
 GACTTTTTGAAGTATTTGACAGGTGAAAAGAAGAAGAAAAGGAGAACTAGTTGATGAAATGAAAAAG
 TCAAGGAGATGTTATGAAGGAATTTAAGAATTAAGTTCGAAGAATTCAGCATTAGAATATCAACTGTC
 AGAAATCCAGAAGTCCAATATGCAGATCAAGTCCAACATAGGCACATTAAGATGCACACGAGTTTAA
 GAAGACCGTCTCCATATCCCAGGATTTCCATAATGTCATGCAGTCTTGATAGTCAGGAAAGCAAT
 GGACAGCTCGAGTTCAGCTATTCATCAAGAACAAGAAGAGAAAGGTCGGCTCCTGTACATATAGA
 GAAACTTCGAACCTCAATGATAGATGATCTAAATGCAAGCAATGTTTTCTATAAGAAAAGGATAGAAG
 CTAGGGCAGAGACTCCAGGAGCAGAATGAGCTGATTATAACTCAGAGACAGCAGATTAAGACTTTACCT
 GTAATCCATTAACAGTATCAGTGAACCCAAAGGAAATCCTTTAGCCTGGCAGGCTTTTGAATCTCAGCC
 AGCTGCTCCAGCTGTGCCTATGAATGCCCCAGCCCTGCACACTTTGGAACTAAATCAAGTCTGCCAATG
 GTGCATGAACAGGCATTCTCGTCGCACATACTGGAACCAATAGAAGAACTTTAGAGGAAGAAAAAGGAA
 GGGAAAATGAACAGAAATTAATAACAACAAAATGCATTTAAGGAAAGCTTTGAAGAGTAACTCCTCCCT
 CACTAAGGGACTAAGAACAATGGTGGAGCAGAAGTTCATGGAGAACTGGAAACCTTGGGGATTAATGCA
 GATATACGTGGCATTTCAGTATCAGTTCATAGAGTACTAAAAAGTGTGGAATCAGAAAGACATAAGC
 AAGAAAGAGAAATACCTAACTTTTCATCAAATTCGAGAATTCCTTGAACATCAAGTCAAGTCAAGTGA
 GGAGAAAGCACTACTCTTTCAGATCAGTGCAGTGTTCCTCAAATGGATACCCCTTCAACTGGAGAAGTA
 CCCAAAATGATACAACCTCCTTCCAAAAACAGACAAGTATTAGACAAAAAGCTGTTTCTACTGATAGGA
 CATCTGTTCCAAAAATTAAGAAAAATGTCATGGAAGATCCTTTTCCAGAAAAGCTTCAACTATTACGAC
 CCCTCCTTTTAGTTTCAGAGGAGGAGCAGGAGGACGACGACCTCATCCGGGCATACGCATCCCAGGCCCA
 CTTCTGTGCCGCCACCACAAAACAAGGGCAGCTTCGGGAAGAACAACAGTGAAGTGCAGCGGACGGGA
 CCGAGGGAAGCGAAATCGAGGACACTGATGATTCTCCAAGCCCGCAGGAGTCCCGTTAAAACACCTAC
 TGAAAAAGTTGAAAAGATGTTTCCACATCGAAAAATGTGAACAAACCAGTCGGTGAAGTAAATGTCCT
 GAGATGTTTATCAAAAAAGAAGAAATACAAGAATAAAGTGTGCGGATGTGGAGGATGAAGACTGGGACA
 TATCATCCCTAGAGGAAGAGATATCTTTGGGAAAAAATCTGGGAAAGAACAAGGAACCTCCACCTGC
 GAAAAATGAACCACATTTTGTCTATGTGCTAAATGCCTGGGGCGCATTTAATCCTAAGGGGCCAAAGGGA
 GAAGGACTTCAAGAAAATGAATCAAGCACATTAAGAGCAGCTTAGTAACTGTGACTGATTGGAGCGACA
 CTTTCAGATGTC

ACGCGTACGCGGCCGCTCGAGCAGAACTCATCTCAGAAGAGGATCTGGCAGCAATGATATCCTGGATT
 ACAAGGATGACGACGATAAGGTTTAA

Protein Sequence:

>RC207188 protein sequence
 Red=Cloning site Green=Tags(s)

MQAEAADWFSSMPFQKHVYYPPLASGPEGPDVAVAAAAAGAASMACAPPSAASGPLPFFQFRPRLESVDWR
 RLSAIDVDKVAGAVDVLTLQENIMNITFCKLEDEKCPHCQSGVDPVLLKLIRLAQFTIEYLLHSQEFLLTS
 QLHTLEERLRLSHCDGEQSKLLTKQAGEIKTLKEECKRRKKMISTQQLMIEAKANYQCHFCDKAFMNQ
 AFLQSHIQRRHTEENSHFEYQKNAQIEKLRSEIVVLKEELQLTRSELEAAHHASAVRFSKEYEMQKTEE
 DFLKLFDRWKEEKEKLVDEMEKVKEMFMKEFKELTSKNSALEYQLSEIQKSNMQIKSNIIGTLKDAHEFK
 EDRSPYPQDFHNVMQLLDSQESKWTARVQAIHQEHKKEKGRLLSHIEKLRTSMIDDLNASNVFYKKRIEE
 LGQRLQEQLNLIITQRQQIKDFTCNPLNSISEPKGNPLAWQAFESQPAAPAVPMNAPALHTLETKSSLPM
 VHEQAFSSHILEPIEELSEEEKGRENEQKLNKKMHLRKALKSNSSLTKGLRTMVEQNLMEKLETGINA
 DIRGISSDQLHRVLKSVESERHKQEREIPNFHQIREFLEHQVSKIEEKALLSSDQCSVSQMDTLSTGEV
 PKMIQLPSKNRQLIRQKAVSTDRTSVPKIKKNVMDPFPKSSITTPPFSEEEQEDDLIRAYASPGP
 LPVPPPQNKGSFGKNTVKSDADGTEGSEIEDTDDSPKAGVAVKTPTEKVEKMFPHRKNNKPVGGTNPV
 EMFIKKEELQELKCADVEDEDWDISSLEEEISLGKSGKEQKEPPPAKNEPHFAHVLNAWGAFNPKGPKG
 EGLQENESSTLKSSLVTVDWSDTSDV

TRTRPLEQKLISEEDLAANDILDYKDDDDKV

Chromatograms:

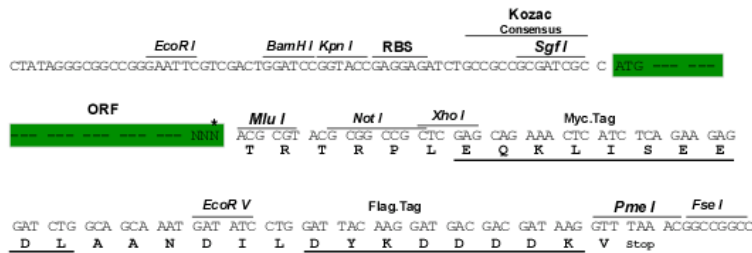
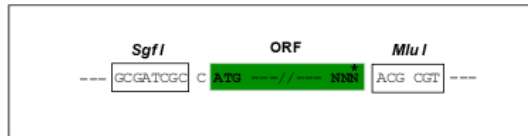
https://cdn.origene.com/chromatograms/mk6806_b04.zip

Restriction Sites:

SgfI-MluI

Cloning Scheme:

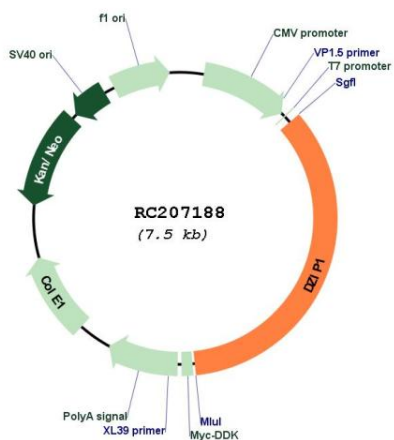
Cloning sites used for ORF Shuttling:



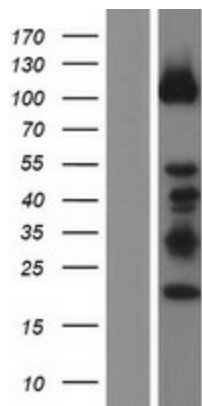
* The last codon before the Stop codon of the ORF

ACCN:	NM_198968
ORF Size:	2601 bp
OTI Disclaimer:	<p>Due to the inherent nature of this plasmid, standard methods to replicate additional amounts of DNA in E. coli are highly likely to result in mutations and/or rearrangements. Therefore, OriGene does not guarantee the capability to replicate this plasmid DNA. Additional amounts of DNA can be purchased from OriGene with batch-specific, full-sequence verification at a reduced cost. Please contact our customer care team at custsupport@origene.com or by calling 301.340.3188 option 3 for pricing and delivery.</p> <p>The molecular sequence of this clone aligns with the gene accession number as a point of reference only. However, individual transcript sequences of the same gene can differ through naturally occurring variations (e.g. polymorphisms), each with its own valid existence. This clone is substantially in agreement with the reference, but a complete review of all prevailing variants is recommended prior to use. More info</p>
OTI Annotation:	This clone was engineered to express the complete ORF with an expression tag. Expression varies depending on the nature of the gene.
Components:	The ORF clone is ion-exchange column purified and shipped in a 2D barcoded Matrix tube containing 10ug of transfection-ready, dried plasmid DNA (reconstitute with 100 ul of water).
Reconstitution Method:	<ol style="list-style-type: none"> 1. Centrifuge at 5,000xg for 5min. 2. Carefully open the tube and add 100ul of sterile water to dissolve the DNA. 3. Close the tube and incubate for 10 minutes at room temperature. 4. Briefly vortex the tube and then do a quick spin (less than 5000xg) to concentrate the liquid at the bottom. 5. Store the suspended plasmid at -20°C. The DNA is stable for at least one year from date of shipping when stored at -20°C.
Note:	Plasmids are not sterile. For experiments where strict sterility is required, filtration with 0.22um filter is required.
RefSeq:	NM_198968.4
RefSeq Size:	7498 bp
RefSeq ORF:	2604 bp
Locus ID:	22873
UniProt ID:	Q86YF9
Cytogenetics:	13q32.1
MW:	98.7 kDa
Gene Summary:	May participate in spermatogenesis via its interaction with DAZ (PubMed:15081113). Has a role in primary cilium formation (PubMed:19852954).[UniProtKB/Swiss-Prot Function]

Product images:



Circular map for RC207188



Western blot validation of overexpression lysate (Cat# [LY404644]) using anti-DDK antibody (Cat# [TA50011-100]). Left: Cell lysates from untransfected HEK293T cells; Right: Cell lysates from HEK293T cells transfected with RC207188 using transfection reagent MegaTran 2.0 (Cat# [TT210002]).