

## Product datasheet for **RC207185**

### **YTHDF1 (NM\_017798) Human Tagged ORF Clone**

#### **Product data:**

Product Type:	Expression Plasmids
Product Name:	YTHDF1 (NM_017798) Human Tagged ORF Clone
Tag:	Myc-DDK
Symbol:	YTHDF1
Synonyms:	C20orf21
Vector:	pCMV6-Entry (PS100001)
E. coli Selection:	Kanamycin (25 ug/mL)
Cell Selection:	Neomycin



[View online »](#)

**ORF Nucleotide Sequence:**

>RC207185 ORF sequence  
 Red=Cloning site Blue=ORF Green=Tags(s)

TTTTGTAATACGACTCACTATAGGGCGGCCGGAATTCGTCGACTGGATCCGGTACCGAGGAGATCTGCC  
 GCC**GCGATCGCC**

ATGTCGGCCACCAGCGTGGACACCCAGAGAACAAAAGGACAAGATAATAAAGTACAAAATGGTTCGTTAC  
 ATCAGAAGGATACAGTTCATGACAATGACTTTGAGCCCTACCTTACTGGACAGTCAAATCAGAGTAACAG  
 TTACCCCTCAATGAGCGACCCCTACCTGTCCAGCTATTACCCGCCGTCATTGGATTTCCTTACTCCCTC  
 AATGAGGCTCCGTGGTCTACTGCAGGGGACCCCGATTCCATACCTCACCACCTACGGACAGCTCAGTA  
 ACGGAGACCATCATTTTTATGCACGATGTGTTTTGGGCAGCCTGGGGCCTGGGGAACAACATCTATCA  
 GCACAGTTCAATTTTTCCCTGAAAACCTGCGTTCTCAGCATGGGGGACAAGTGGGTCTCAAGGTCAG  
 CAGACCCAGAGCTCCGCGTATGGGAGCAGCTACACCTACCCCGAGCTCCCTGGGTGGCAGCGTGGTTG  
 ATGGGCAGCCAGGCTTTCACAGCGACACCCTCAGCAAGGCCCCCGGATGAACAGCCTGGAGCAGGGCAT  
 GGTGCGCTGAAGATTGGGGACGTCAGCTCCTCCGCCGTCAGACGGTGGGCTCTGTCGTCAGCAGCGTG  
 GCACTGACTGGTGTCTTTCTGGCAACGGTGGGACAAATGTGAACATGCCAGTTTCAAAGCCGACCTCGT  
 GGGCTGCCATTGCCAGCAAGCCTGCAAAAACCACAGCCTAAAATGAAAACAAGAGCGGGCCTGTCATGGG  
 GGGTGGGCTGCCCTCCACCCATAAAGCATAACATGGACATTGGCACCTGGGATAACAAGGGGCCTGTG  
 CCGAAGGCCCCAGTCCCCAGCAGGCACCCTCTCCACAGGCTGCCCCACAGCCCCAGCAGGTGGCTCAGC  
 CTCTCCAGCACAGCCCCAGCTTTGGCTCAACCGCAGTATCAGAGCCCTCAGCAGCCACCCAGACCCG  
 CTGGGTGGCCCCACGCAACAGAAACGCGGCGTTTGGGCAGAGCGGAGGGGCTGGCAGCGATAGCAACTCT  
 CCTGAAAACGTCACGCCATAATTCTGCCCCAGCGTCGAATCCCACCCGTCCTTGAAAAACTGAAGGCTG  
 CTCACAGCTACAACCCGAAAGAGTTTGAAGTGAATCTGAAAAGCGGGCGTGTGTTTCATCATCAAGAGCTA  
 CTCTGAGGACGACATCCACCGCTCCATTAAGTACTCCATCTGGTGTAGCACAGAGCACGGCAACAAGCGC  
 CTGGACAGCGCCTTCCGCTGCATGAGCAGCAAGGGGCCGCTACCTGCTCTCAGCGTCAATGGGAGTG  
 GGCATTTTTGTGGGTGGCCGAGATGAAGTCCCCGTTGGACTACGGCACCAAGTGCAGGGGCTGTGCTCA  
 GGACAAGTGAAGGGGAAGTTTGTATGTCCAGTGGATTTTTGTTAAGGATGTACCAATAACCAGCTCCGG  
 CACATCAGGCTGGAGAATAACGACAACAACCGGTACAAACTCCGGGACACCCAGGAGGTGCCCTTAG  
 AAAAAGCCAAGCAAGTGTGAAAATTATCAGTTCCTACAAGCACACAACCTCCATCTTCGACGACTTTGC  
 TCACTACGAGAAGCGCCAGGAGGAGGAGGTGGTGCACAAGGAACGGCAGAGTCGAAACAACAA

**ACGCGTACGCGGCCGCTCGAGCAGAAACTCATCTCAGAAGAGGATCTGGCAGCAAATGATATCCTGGATT  
 ACAAGGATGACGACGATAAGGTTTAA**

**Protein Sequence:**

>RC207185 protein sequence  
 Red=Cloning site Green=Tags(s)

MSATSVDTQRKGDQDNKVNQSLHQKDTVHDNDFEPYLTGQSNQSNYSYPSMSDPYLSYSSYPPSIFGPYSL  
 NEAPWSTAGDPPIPYLTTYGQLSNGDHHFMHDAVFGQPGGLGNNIYQHRFNFFPENPAFSAWGTSGSQGQ  
 QTQSSAYGSSYTYPPSSLGGTVVDGQPGFHSDDLKAPGMNSLEQGMVGLKIGDVSSSAVKTVGSVSSV  
 ALTGVLSGNGGTVNMPVSKPTSWAAIASKPAKQPKMKTSGPVMGGGLPPPPIKHNMDIGTWDNKGVP  
 PKAPVPQQAPSPQAAPQPQVAQPLPAQPPALAQPYQSPQPPQTRWVAPRNRNAAFGQSGGAGSDSNS  
 PGNVQPNAPSVEVSHPVLEKLAHNSYNPKFEWNLKSGRVFIIKSYSEDDIHRSIKYSIWCSTEHNKR  
 LDSAFRCMSSKGPVYLLFSVNGSGHFCGVAEMKSPVDYGTSAVWSQDKWKGFVQWIFVKDVPNNQLR  
 HIRLENNDNKPVNSRDTQEVPLEKAKQVLKIISSYKHTTSIFDDFAHYEKRQEEEEVVRKERQSRNKQ

**TRTRPLEQKLISEEDLAANDILDYKDDDDKV**

**Chromatograms:**

[https://cdn.origene.com/chromatograms/mk6341\\_h09.zip](https://cdn.origene.com/chromatograms/mk6341_h09.zip)

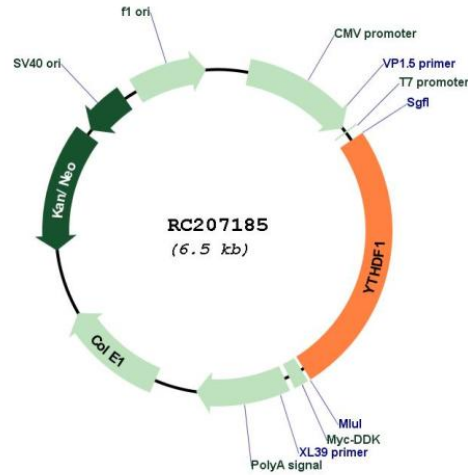
**Restriction Sites:**

SgfI-MluI

Cloning Scheme:



Plasmid Map:

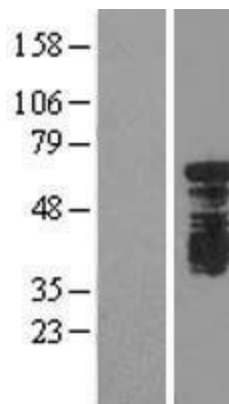


ACCN:

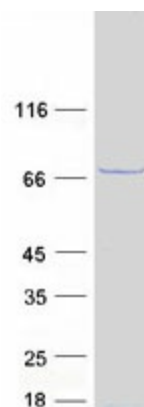
NM\_017798

ORF Size:	1677 bp
OTI Disclaimer:	The molecular sequence of this clone aligns with the gene accession number as a point of reference only. However, individual transcript sequences of the same gene can differ through naturally occurring variations (e.g. polymorphisms), each with its own valid existence. This clone is substantially in agreement with the reference, but a complete review of all prevailing variants is recommended prior to use. <a href="#">More info</a>
OTI Annotation:	This clone was engineered to express the complete ORF with an expression tag. Expression varies depending on the nature of the gene.
RefSeq:	<a href="#">NM_017798.4</a>
RefSeq Size:	3277 bp
RefSeq ORF:	1680 bp
Locus ID:	54915
MW:	60.9 kDa

### Product images:



Western blot validation of overexpression lysate (Cat# [LY413537]) using anti-DDK antibody (Cat# [TA50011-100]). Left: Cell lysates from untransfected HEK293T cells; Right: Cell lysates from HEK293T cells transfected with RC207185 using transfection reagent MegaTran 2.0 (Cat# [TT210002]).



Coomassie blue staining of purified YTHDF1 protein (Cat# [TP307185]). The protein was produced from HEK293T cells transfected with YTHDF1 cDNA clone (Cat# RC207185) using MegaTran 2.0 (Cat# [TT210002]).