

Product datasheet for **RC207181**

SLC44A2 (NM_020428) Human Tagged ORF Clone

Product data:

Product Type:	Expression Plasmids
Product Name:	SLC44A2 (NM_020428) Human Tagged ORF Clone
Tag:	Myc-DDK
Symbol:	SLC44A2
Synonyms:	CTL2; PP1292
Mammalian Cell Selection:	Neomycin
Vector:	pCMV6-Entry (PS100001)
E. coli Selection:	Kanamycin (25 ug/mL)



[View online »](#)

ORF Nucleotide
Sequence:

>RC207181 ORF sequence
 Red=Cloning site Blue=ORF Green=Tags(s)

TTTTGTAATACGACTCACTATAGGGCGGCCGGGAATTCGTCGACTGGATCCGGTACCGAGGAGATCTGCC
 GCC**CGGATCGCC**

ATGGGGGACGAGCGGCCCACTACTACGGGAAACACGGAACGCCACAGAAGTATGATCCCACTTTCAAAG
 GACCCATTTACAATAGGGGCTGCACGGATATCATATGCTGTGTTCCTGCTCCTGGCCATTGTGGGCTA
 CGTGGCTGTAGGCATCATAGCCTGGACTCATGGAGACCCTCGAAAAGTGATCTACCCCACTGATAGCCGG
 GGCGAGTCTGCGGGCAGAAGGGCACAAAAACGAGAACAACCCATCTGTTTTATTTCAACATTGTGA
 AATGTGCCAGCCCCCTGGTTCTGCTGGAATCCAATGTCCCACTCCCAGATCTGCGTGGAAAAATGCC
 CGACCGCTACCTCACGTACCTGAATGCTCGCAGCTCCCGGACTTTGAGTACTATAAGCAGTTCTGTGT
 CCTGGCTTCAAGAACAATAAAGGAGTGGCTGAGGTGCTTCGAGATGGTACTGCCCTGCTGCTCATCC
 CCAGCAAACCTTGGCCCGGAGATGCTTCCCCGCTATCCACGCCACAAGGGTCTCTGATGGTGGGCAA
 TGAGACGACCTATGAGGATGGGCATGGCTCCCGAAAAACATCACAGACCTGGTGGAGGGGCCAAGAAA
 GCCAATGGAGTCCTAGAGGCGCGCAACTCGCCATGCGCATATTTGAAGATTACACCGTCTCTTGGTACT
 GGATTATCATAGGCCTGGTCATTGCCATGGCGATGAGCCTCCTGTTTCATCATCCTGCTTCGCTTCTGGC
 TGGTATTATGGTCTGGGTGATGATCATCATGGTATTCTGGTGTGGGCTACGGAATATTTCACTGCTAC
 ATGGAGTACTCCCGACTGCGTGGTGAAGCCGGCTCTGATGTCTCTTTGGTGGACCTCGGCTTTCAGACGG
 ATTTCCGGGTGTACCTGCACTTACGGCAGACCTGGTTGGCCTTTATGATCATTCTGAGTATCCTTGAAGT
 CATTATCATCTTGCTGCTCATCTTTCTCCGGAAGAGAATTCTCATCGGATTGCACTCATCAAAGAAGCC
 AGCAGGGCTGTGGGATACGTATGTCTCTTGTCTACCCACTGGTACCTTCTTCTTGTGTGCTCTTGA
 GCATCGCCTACTGGGCCAGCACTGCTGTCTTCTGTCCACTTCCAACGAAGCGGTCTATAAGATCTTTGA
 TGACAGCCCTGCCCATTTACTGCGAAAACTGCAACCCAGAGACCTTCCCTCCTCCAATGAGTCCCGC
 CAATGCCCAATGCCGTTGCCAGTTCCCTTCTACGGTGGTGAAGTGGGCTACCACCGGCCCTGCTGG
 GCCTGCAGATCTCAATGCCTTCATGTTCTTCTGGTTGGCCAACCTCGTGTGGCCTGGGCCAGGTAC
 GCTGGCCGGGCTTTGCCTCTACTACTGGGCCCTGCGCAAGCCGGACGACCTGCCGCTTCCCGCTC
 TTCTCTGCCTTTGGCCGGGCGCTCAGGTACCACACAGGCTCCCTGGCCTTTGGCGGCTCATCCTGGCCA
 TTGTGCAGATCATCCGTGTGATACTCGAGTACCTGGATCAGCGGCTGAAAGCTGCAGAGAACAAGTTTGC
 CAAGTGCCTCATGACCTGTCTCAAATGCTGCTTCTGGTGCCTGGAGAAGTTCATCAAATTCCTTAATAGG
 AATGCCTACATCATGATTGCCATCTACGGCACCAATTTCTGCACCTCGGCCAGGAATGCCTTCTTCTGC
 TCATGAGAAACATCATCAGAGTGGCTGTCTGGATAAAGTTACTGACTTCTCTTCTGTTGGGCAACT
 TCTGATCGTTGGTGTGGGATCCTGGCTTCTTCTTCTTCAACCACCGTATCAGGATCGTGCAGGAT
 ACAGCACCAACCCCTCAATTACTGGGTTCTATACTGACGGTATCGTTGGCTCCTACTTGATTGCAC
 ACGGTTTCTTACGCTATGGCATGTGTGGACACGCTGTTCTCTGCTTCTTGGAGGACCTGGAGAG
 GAATGACGGCTCGGCCGAGAGGCCTTACTTCATGTCTTCCACCCTCAAGAAACCTTGAACAAGACCAAC
 AAGAAGGCAGCGGAGTCC

ACGCGTACGCGGCCGCTCGAGCAGAACTCATCTCAGAAGAGGATCTGGCAGCAAATGATATCCTGGATT
 ACAAGGATGACGACGATAAGGTTTAA

Protein Sequence: >RC207181 protein sequence
 Red=Cloning site Green=Tags(s)

MGDERPHYYGKHGTPQKYDPTFKGPIYNRGCTDIICCVFLLLAIVGYVAVGIIAWTHGDPRKVIYPTDSR
 GEF CGQKGTKNENKPYLFYFNIVKASPLVLEFQCPTPQICVEKCPDRYLTYLNARSSRDFEYKQFCV
 PGFKNNKGVAEVL RDGDCPAVLIPSKPLARRCFPAIHAYKGLVMVGNETTYEDGHGSRKNITDLVEGAKK
 ANGVLEARQLAMRIFEDYTVSWYWIIGLVIAMMSLLFIILLRFLAGIMVWVMIIMVILVLGYGIFHCY
 MEYSRLRGEAGSDVSLVDLGFQTFDRVYLHLRQTLWAFMIILSILEVIIILLIFLRKRILIAIALIKEA
 SRAVGVMCSLLYPLVTFLLCLCIAYWASTAVFLSTSNEAVYKIFDSDPCPFTAKTCNPETFPSSNESR
 QCPNARCQFAFYGGESGYHRALLGLQIFNAFMFFLANFVLALGQVTLGAFASYWALRKPDDLPAFPL
 FSAFGRALRYHTGSLAFGALILAIVQIIRVILEYLDQRLKAAENKFAKCLMTCLKCCFWCLEKFIKFLNR
 NAYIMIAIYGTNFACTSARNAFFLLMRNIIRVAVLDKVTDFLLGKLLIVGSVILAFFFFTHRIRIVQD
 TAPPLNYYWVPIILTVIVGSYLIAHGFFSVYGMCDTLFLCFLEDLERNDGSAERP YFMSSTLKKPLNKTN
 KKAAS

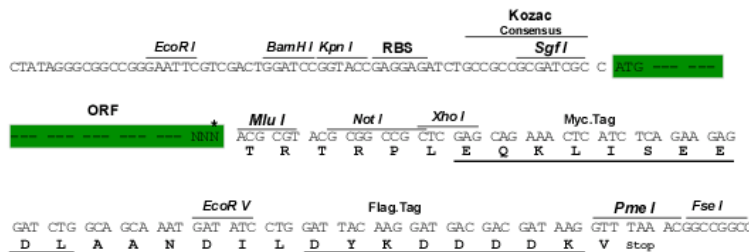
TRTRPLEQKLI SEEDLAANDILDYKDDDDKV

Chromatograms: https://cdn.origene.com/chromatograms/mk6339_g03.zip

Restriction Sites: SgfI-MluI

Cloning Scheme:

Cloning sites used for ORF Shuttling:



* The last codon before the Stop codon of the ORF

ACCN: NM_020428

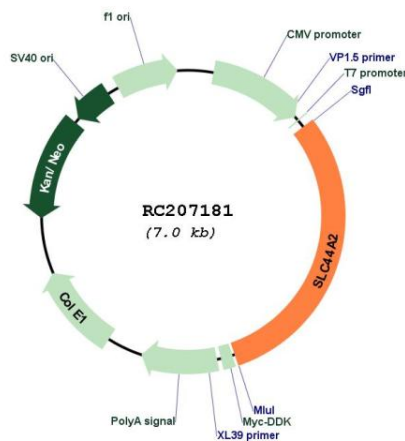
ORF Size: 2118 bp

OTI Disclaimer: The molecular sequence of this clone aligns with the gene accession number as a point of reference only. However, individual transcript sequences of the same gene can differ through naturally occurring variations (e.g. polymorphisms), each with its own valid existence. This clone is substantially in agreement with the reference, but a complete review of all prevailing variants is recommended prior to use. [More info](#)

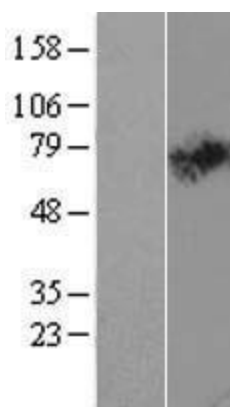
OTI Annotation: This clone was engineered to express the complete ORF with an expression tag. Expression varies depending on the nature of the gene.

- Components:** The ORF clone is ion-exchange column purified and shipped in a 2D barcoded Matrix tube containing 10ug of transfection-ready, dried plasmid DNA (reconstitute with 100 ul of water).
- Reconstitution Method:**
1. Centrifuge at 5,000xg for 5min.
 2. Carefully open the tube and add 100ul of sterile water to dissolve the DNA.
 3. Close the tube and incubate for 10 minutes at room temperature.
 4. Briefly vortex the tube and then do a quick spin (less than 5000xg) to concentrate the liquid at the bottom.
 5. Store the suspended plasmid at -20°C. The DNA is stable for at least one year from date of shipping when stored at -20°C.
- Note:** Plasmids are not sterile. For experiments where strict sterility is required, filtration with 0.22um filter is required.
- RefSeq:** [NM_020428.2](#), [NP_065161.2](#)
- RefSeq Size:** 3434 bp
- RefSeq ORF:** 2121 bp
- Locus ID:** 57153
- UniProt ID:** [Q8IWA5](#)
- Cytogenetics:** 19p13.2
- Domains:** DUF580
- Protein Families:** Transmembrane
- MW:** 80.1 kDa
- Gene Summary:** Isoform 1, but not isoform 3, exhibits some choline transporter activity.[UniProtKB/Swiss-Prot Function]

Product images:



Circular map for RC207181



Western blot validation of overexpression lysate (Cat# [LY412479]) using anti-DDK antibody (Cat# [TA50011-100]). Left: Cell lysates from untransfected HEK293T cells; Right: Cell lysates from HEK293T cells transfected with RC207181 using transfection reagent MegaTran 2.0 (Cat# [TT210002]).