

Product datasheet for **RC207173**

DDX59 (NM_001031725) Human Tagged ORF Clone

Product data:

Product Type:	Expression Plasmids
Product Name:	DDX59 (NM_001031725) Human Tagged ORF Clone
Tag:	Myc-DDK
Symbol:	DDX59
Synonyms:	OFD5; ZNHIT5
Mammalian Cell Selection:	Neomycin
Vector:	pCMV6-Entry (PS100001)
E. coli Selection:	Kanamycin (25 ug/mL)



[View online »](#)

ORF Nucleotide Sequence:

>RC207173 ORF sequence
 Red=Cloning site Blue=ORF Green=Tags(s)

TTTTGTAATACGACTCACTATAGGGCGGCCGGGAATTCGTCGACTGGATCCGGTACCGAGGAGATCTGCC
 GCC**CGCATCGCC**

ATGTTTGTCCAAGATCTCTAAAAATCAAGAGGAATGCTAATGATGATGGCAAAGTTGTGTGGCTAAGA
 TAATTAACCAGACCCAGAAGACCTTCAGTTGGACAAAAGCAGAGATGTTCCCGTTGATGCTGTAGCTAC
 AGAAGCAGCCACAATAGACAGGCACATCAGCGAATCATGCCCTTTCCCGAGCCAGGTGGCCAGTTGGCA
 GAGGTTCAATCAGTAAGTCCCGAGCAGGGTGGCAAGGACAGCCATCCTTCTGAAGAGCCCGTTAAGTCAT
 TTTCCAAAACACAGCGCTGGGCAGAACCAGGGGAACCCATCTGTGTTGTCTGTGGTCTTATGGAGAGTA
 TATCTGTGATAAGACAGATGAAGATGTGTGTAGTTTGGAGTGTAAAGCGAAACATCTTCTACAAGTTAAG
 GAAAAGGAAGAGAAATCAAACCTCAGCAATCCACAGAAGGCTGATTCTGAGCCAGAGTCTCCACTGAATG
 CTTCTATGTCTACAAAGAGCACCCCTTATTTTGAACCTTCAGGAAGACCAGATTGAAAATCTTAAACA
 GCAGCTGGGAATTTAGTTCAAGGGCAAGAAGTACCAGGCCATTATTGACTTTGAACATTGTAGTCTC
 CCTGAGGTCTTAAATCACAACTTGAAGAAATCAGGCTATGAGGTGCCAATCCCATTCAAATGCAGATGA
 TTCTGTGGGACTTCTGGGAAGAGACATTCTGGCCAGTGCAAGTACTGGCTCAGGAAAAACAGCTGCTTT
 TCTTCTTCTGTTATCATGCGAGCTTATTCGAGAGCAAACTCCATCTGCGCTCATTCTTACACCAACC
 AGAGAGTTAGCCATTGATAGAGAGACAAGCTAAAGAATTGATGAGTGGCCTGCCACGCATGAAAACCTG
 TGCTTCTGTAGGGGGCTTACCCTTACCCACAGCTTATCGTCTGCAACAACATGTTAAGGTTATCAT
 AGCAACCCTGGGCGACTTCTGGATATAATAAAGCAGAGCTCTGTAGAATCTGTGGTGTAAAGATTGTG
 GTAGTAGATGAAGCTGATACCATGTTAAGATGGGTTTTCAACAACAAGTCTTGACATTTTGGAAAACA
 TTCTTAATGATTGTCAGACCATTTGGTTTCAGCCACAATTCCAACATGACATAGAACAGTAGCAAGCCA
 GCTTCTGCATAATCCTGTGAGAATTACTACTGGAGAAAAGAACCTACCTGTGCCAATGTACGTCAGATT
 ATTTTGTGGGTAGAAGACCCAGCCAAAAAGAAAAAATTTTGAATTTTAAATGATAAGAACTCTTTA
 AGCCTCCAGTGTTAGTATTTGTGGACTGCAAACTAGGAGCAGATCTTTTGTAGTGAAGCCGTTGAGAAAAT
 CACAGGGCTGAAAAGAATATCTATACATTCGGAGAAGTCGCAAAATAGAAAGGAAAAACATATTGAAGGGA
 TTAAGGAGGACTATGAAGTTGTAGTGAAGCAGGAGTCTTGGGACGAGGCCAGACTTGTAGTCAAGT
 TCAGGCTGGTGTCAATTTGATATGCCTCAAGTATGGATGAGTATGTCCATCAGATTGGAAGAGTAGG
 AAGATTAGGTCAAATGGAACAGCGATTACTTTTCAATAATAATTCAAAGACTCTTCTGGGATATT
 GCAAAACGAGTAAAGCCACAGGATCCATTCTTCCCCTCAGTTATTAATTTCCCATACCTTCATGACC
 AGAAGAGAAAGGAACAACAGAAAGATAAACAGACACAGAATGATCTGTTACAGGAGCTAATCTTATGGA
 TATTATCAGAAAACATGATAAAAGTAATTCTCAGAAA

ACGCGTACGCGGCCGCTCGAGCAGAACTCATCTCAGAAGAGGATCTGGCAGCAAATGATATCCTGGATT
 ACAAGGATGACGACGATAAGGTTTAA

Protein Sequence:

>RC207173 protein sequence
 Red=Cloning site Green=Tags(s)

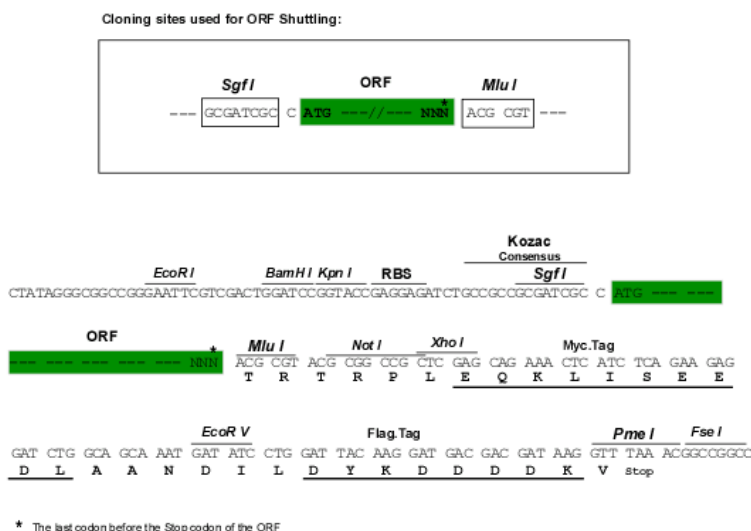
MFVPRSLKIKRNANDDGKSCVAKI IKPDPEDLQLDKSRDVPVDAVATEAATIDRHISESCFPSPGGQLA
 EVHSVSPEQGAKDSHPSEEPVKSFSKTRWAEPGEPICVVCGRYGEYICDKTDEDVCSLECKAKHLLQVK
 EKEEKSKLSNPQKADSEPEPLNASYVYKEHPFILNLQEDQIENLKQQLGILVQGEVTRPIIDFEHCSL
 PEVLNHNLLKSGYEVPTPIQMIPVGLLGRDILASADTGSKTAFLLPVIMRALFESKTPSALILTPT
 RELAIQIERQAKELMSGLPRMKTVLLVGLPLPPQLYRLQQHVKVIATPGRLLDIIKQSSVELCGVKIV
 VVDEADTMLKMGFQQVLDILENIPNDQITILVSATIPTSIEQLASQLLHNPVRIITGKLNLPANVRQI
 ILWVEDPAKKKLFELNDKLLFKPPVLFVDCKLGADLLSEAVQKITGLKRISIHSEKSQIERKNILKGL
 LLEGDYEVVVSTGVLGRGLDLISVRLVNFDMPPSSMDEYVHQIGRVGRLGQNGTAITFINNNSKRLFWDI
 AKRVKPTGSILPPQLLNSPYLHDQKRKEQQKDKQTQNDLVTGANLMDIIRKHKDSNSQK

TRTRPLEQKLISEEDLAANDILDYKDDDDKV

Chromatograms: https://cdn.origene.com/chromatograms/mk6341_h11.zip

Restriction Sites: SgfI-MluI

Cloning Scheme:



ACCN: NM_001031725

ORF Size: 1857 bp

OTI Disclaimer: The molecular sequence of this clone aligns with the gene accession number as a point of reference only. However, individual transcript sequences of the same gene can differ through naturally occurring variations (e.g. polymorphisms), each with its own valid existence. This clone is substantially in agreement with the reference, but a complete review of all prevailing variants is recommended prior to use. [More info](#)

OTI Annotation: This clone was engineered to express the complete ORF with an expression tag. Expression varies depending on the nature of the gene.

Components: The ORF clone is ion-exchange column purified and shipped in a 2D barcoded Matrix tube containing 10ug of transfection-ready, dried plasmid DNA (reconstitute with 100 ul of water).

Reconstitution Method:

1. Centrifuge at 5,000xg for 5min.
2. Carefully open the tube and add 100ul of sterile water to dissolve the DNA.
3. Close the tube and incubate for 10 minutes at room temperature.
4. Briefly vortex the tube and then do a quick spin (less than 5000xg) to concentrate the liquid at the bottom.
5. Store the suspended plasmid at -20°C. The DNA is stable for at least one year from date of shipping when stored at -20°C.

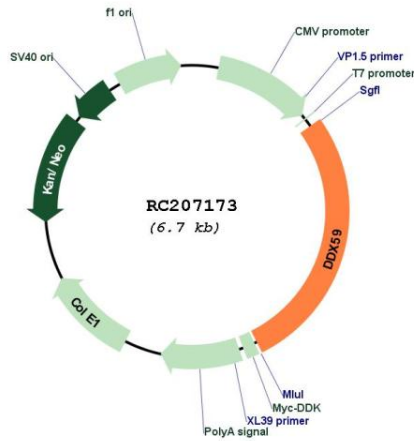
RefSeq: [NM_001031725.3](#)

RefSeq Size: 2337 bp

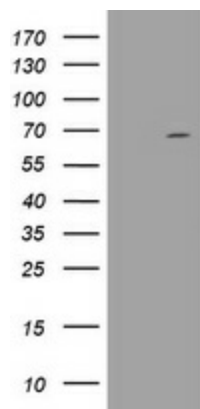
RefSeq ORF: 1860 bp

Locus ID: 83479
UniProt ID: [Q5T1V6](#)
Cytogenetics: 1q32.1
MW: 68.9 kDa

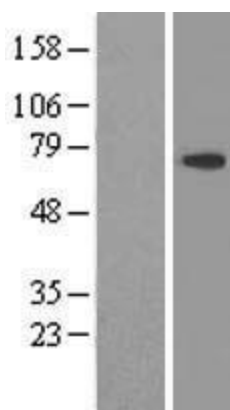
Product images:



Circular map for RC207173



HEK293T cells were transfected with the pCMV6-ENTRY control (Cat# [PS100001], Left lane) or pCMV6-ENTRY DDX59 (Cat# RC207173, Right lane) cDNA for 48 hrs and lysed. Equivalent amounts of cell lysates (5 ug per lane) were separated by SDS-PAGE and immunoblotted with anti-DDX59 (Cat# [TA800556]). Positive lysates [LY422174] (100ug) and [LC422174] (20ug) can be purchased separately from OriGene.



Western blot validation of overexpression lysate (Cat# [LY422174]) using anti-DDK antibody (Cat# [TA50011-100]). Left: Cell lysates from untransfected HEK293T cells; Right: Cell lysates from HEK293T cells transfected with RC207173 using transfection reagent MegaTran 2.0 (Cat# [TT210002]).



Coomassie blue staining of purified DDX59 protein (Cat# [TP307173]). The protein was produced from HEK293T cells transfected with DDX59 cDNA clone (Cat# RC207173) using MegaTran 2.0 (Cat# [TT210002]).