

Product datasheet for **RC207169**

EAF1 (NM_033083) Human Tagged ORF Clone

Product data:

Product Type:	Expression Plasmids
Product Name:	EAF1 (NM_033083) Human Tagged ORF Clone
Tag:	Myc-DDK
Symbol:	EAF1
Mammalian Cell Selection:	Neomycin
Vector:	pCMV6-Entry (PS100001)
E. coli Selection:	Kanamycin (25 ug/mL)
ORF Nucleotide Sequence:	>RC207169 ORF sequence Red=Cloning site Blue=ORF Green=Tags(s)

TTTTGTAATACGACTCACTATAGGGCGGCCGGAATTCGTCGACTGGATCCGGTACCGAGGAGATCTGCC
GCC**CGATCGCC**

ATGAATGGGACCGCAAACCCGCTGCTGGACCGCGAGGAACATTGCCTGAGGCTCGGGGAGAGCTTCGAGA
AGCGGCCGCGGGCCTCCTCCACACTATTCGTTATGATTTAAACCAGCATCTATAGACACTTCCTGTGA
AGGAGAGCTTCAAGTTGGCAAAGGAGATGAAGTCACAATTACACTCCACATATCCCTGGATCCACACCA
CCCATGACTGTGTTCAAGGGAAACAAACGGCCTTACCAGAAAGACTGTGTGCTTATTATTAATCATGACA
CTGGTGAATTTGTCTGGAAAACTCAGTAGCAGCATTACAGTGAAGAAAACAAGAGCTGAGGGCAGCAG
TAAAATCCAGGCCGAATGGAACAGCAGCCCACTCGTCCTCCACAGACGTACAGCCACCACCCTCCA
CCACCTATGCCATTAGAGCTCCAACGAAGCCTCCAGTTGGACCCAAAATTCTCCCTTGAAGATAACC
CCTCACCTGAACCTCAGTTGGATGACATCAAAGAGAGCTGAGGGCTGAAGTTGACATTATTGAACAAAT
GAGCAGCAGCAGTGGGAGCAGCTCTCAGACTCTGAGAGCTCTTCGGGAAGTGATGACGATAGCTCCAGC
AGTGGAGGCGAGGACAATGGCCAGCCTCTCCTCCGAGCCTTACACCAGCAGCCCTACAACAGTAGGC
CTGCCGTTGCCAATGGAACAGCCGGCCACAAGGAAGCAACCAGCTCATGAACGCCCTCAGAAATGACTT
GCAGTTGAGTGAGTCTGGCAGTGACAGTGATGAC

ACGCGTACGCGGCCGCTCGAGCAGAAACTCATCTCAGAAGAGGATCTGGCAGCAAATGATATCCTGGATT
ACAAGGATGACGACGATAAGGTTTAA



[View online »](#)

Protein Sequence: >RC207169 protein sequence
Red=Cloning site Green=Tags(s)

MNGTANPLLDREEHCLRLGESFEKRPRASFHTIRYDFKPPASIDTSCEGELQVKGDEVTITLPHIPGSTP
 PMTVFKGNKRPYQKDCVLIINHDTGEFVLEKLSSTIQVKKTRAEGSSKIQARMEQQPTRPPQTSQPPPPP
 PPMPFRAPTKPPVGPKTSPLKDNPSPEPQLDDIKRELRAEVDIIEMSSSSGSSSSDSESSSGSDDDDSSS
 SGGEDNGPASPPQPSHQQPYNSRPVANGTSRPQGSNQLMNALRNDLQLSESGSDSDDD

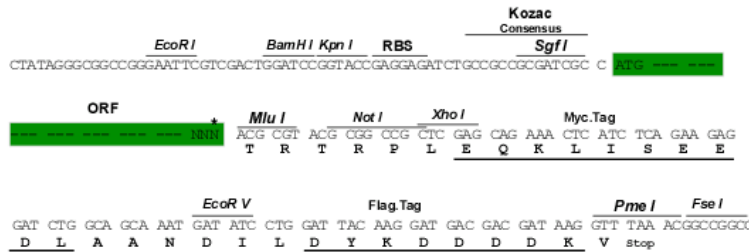
TRTRPLEQKLISEEDLAANDILDYKDDDDKV

Chromatograms: https://cdn.origene.com/chromatograms/mk6340_h10.zip

Restriction Sites: SgfI-MluI

Cloning Scheme:

Cloning sites used for ORF Shuttling:



ACCN: NM_033083

ORF Size: 804 bp

OTI Disclaimer: The molecular sequence of this clone aligns with the gene accession number as a point of reference only. However, individual transcript sequences of the same gene can differ through naturally occurring variations (e.g. polymorphisms), each with its own valid existence. This clone is substantially in agreement with the reference, but a complete review of all prevailing variants is recommended prior to use. [More info](#)

OTI Annotation: This clone was engineered to express the complete ORF with an expression tag. Expression varies depending on the nature of the gene.

Components: The ORF clone is ion-exchange column purified and shipped in a 2D barcoded Matrix tube containing 10ug of transfection-ready, dried plasmid DNA (reconstitute with 100 ul of water).

Reconstitution Method:

1. Centrifuge at 5,000xg for 5min.
2. Carefully open the tube and add 100ul of sterile water to dissolve the DNA.
3. Close the tube and incubate for 10 minutes at room temperature.
4. Briefly vortex the tube and then do a quick spin (less than 5000xg) to concentrate the liquid at the bottom.
5. Store the suspended plasmid at -20°C. The DNA is stable for at least one year from date of shipping when stored at -20°C.

RefSeq: [NM_033083.3](#)

RefSeq Size: 4503 bp

RefSeq ORF: 807 bp

Locus ID: 85403

UniProt ID: [Q96JC9](#)

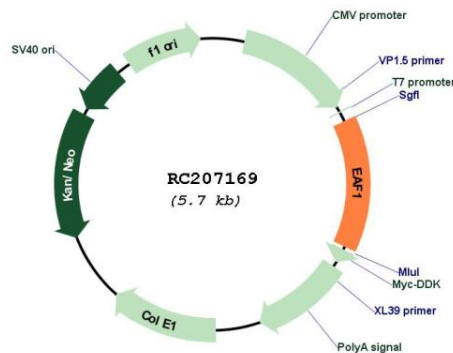
Cytogenetics: 3p25.1

Protein Families: Druggable Genome, Transcription Factors

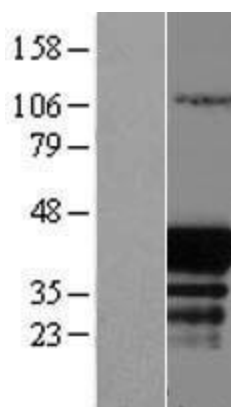
MW: 29 kDa

Gene Summary: Acts as a transcriptional transactivator of ELL and ELL2 elongation activities.[UniProtKB/Swiss-Prot Function]

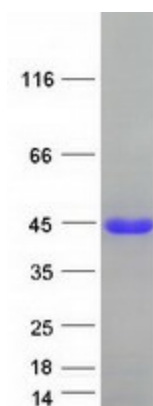
Product images:



Circular map for RC207169



Western blot validation of overexpression lysate (Cat# [LY409733]) using anti-DDK antibody (Cat# [TA50011-100]). Left: Cell lysates from untransfected HEK293T cells; Right: Cell lysates from HEK293T cells transfected with RC207169 using transfection reagent MegaTran 2.0 (Cat# [TT210002]).



Coomassie blue staining of purified EAF1 protein (Cat# [TP307169]). The protein was produced from HEK293T cells transfected with EAF1 cDNA clone (Cat# RC207169) using MegaTran 2.0 (Cat# [TT210002]).