

Product datasheet for **RC207167**

CCDC65 (NM_033124) Human Tagged ORF Clone

Product data:

Product Type:	Expression Plasmids
Product Name:	CCDC65 (NM_033124) Human Tagged ORF Clone
Tag:	Myc-DDK
Symbol:	CCDC65
Synonyms:	CFAP250; DRC2; FAP250; NYD-SP28
Mammalian Cell Selection:	Neomycin
Vector:	pCMV6-Entry (PS100001)
E. coli Selection:	Kanamycin (25 ug/mL)



[View online »](#)

ORF Nucleotide Sequence:

>RC207167 ORF sequence
 Red=Cloning site Blue=ORF Green=Tags(s)

TTTTGTAATACGACTCACTATAGGGCGGCCGGAATTCGTCGACTGGATCCGGTACCGAGGAGATCTGCC
 GCC**CGCATCGCC**

ATGCCTAAGAAAGAAAAATGGCCAAGACGCCCTGTCCGATGAGAAGCAGCTGCTTCTGTTTCAGCAGA
 AGTTGCTGGCAGAGGAGAGATGGCCAAAAAGAAGGAGAGGCTCCTCAGCCAGTTCTTGAAGGACAAGCT
 GGCCAAGGAGGAACACAACAGTGTCTGAACCTTAATAAGATTAACACACAGTGGAGAAGCTGCTTTCGG
 GAAGTCAAGACCAGAGAAGCTTATAAGGACATTGAGATCCTCAGCCAAACATTTGAACGAGTGGTGGACT
 GTAAGGACAATGTCATCAAGTCTTTAGCTAAAGACCTGTCCGAAGCCGAGGAGCAGTACGCCATGCCCT
 GCGCAGCCACTTGCACAATGTTGACCAGCTCTTGGCCCTGCAGAGGCACCGGCTCAGTCTCCTGGAGGAA
 AGTTACAACATGGAGCTGGAAGCCCTAACCAAGGAGTTTGAGACAGAAAGGAAGACAATTATTGACCAAC
 ATGAGAAAGAGATTCATCTGCAAGATATCTCATGGCCATGGAGCAGAACTATATAGATTCTGAGTA
 TGAAGCAAGCTGGAGTCCAGAGCATGTGGAATGATCTCAAAAACATGAATTTAGAAGAGAAGCACTTT
 CTAAAGACTGCACCTGGAGAACAGAGTAGAAGATCTGTGGAGAAAGTCCAGGATGTACTCAAGAATTACA
 CTGATGCCACAGAGGATCGAAAGGCTGCCTTTGAGACCCTGCAGGTGAAGGATGAGAAGAGCTCCAAAGA
 GATTGAAGTACAGATGAAAAAATACAGAACTACAGGATGCCATAACTATTTCAAAGGCAAGATCATG
 ATACACAGCCGTGAGAGTGAAGATGAGAACCGGTATATCCGTAATGACAAGGAATTGGTCTTGTACAAC
 TGCGAAAACCTTAAGGCCCAAAGAAGCTCAGGCCCGGCAGCATCCCAGAAGAACTTAGTCAGACTCACCT
 GAAAGTAAATGCCACCCTCAAGGCCCTGAGAAAGATTGTTGATAAGGGTGAAAAGATCCTTAAACTTGCT
 GAAATATGTAGGAAATTTGAAACCGAAGAAGAAAAAGTGTGCCTTTTTATTATCATCAGTATTGACTCCTA
 AGGAGCAGGAGGGGATTCAGAAGAATAAATCTAGAAGAGCTTACTGAGGAGCTACCAAGGTGATGGTGGG
 CTACATAGGAATGGAGAATTTCTGGAAAAGGTACAACAAAGTGAAGTGAAGTGAAGTGAAGTGAAGTGAAG
 AGACGAGCCAGCTGCTAGATATCAATGGGAAGCTGCGGGAGATGCTGAAGCAGTACTTGGATGGCATCT
 CAGTGAGTGACGAAGTGTGAGCCAGCTCAACCCACTCTTTATAGTCAACTATCAAGCAACTTACTCCA
 GCCCTTGTCCATACGTATAGCCCATCCAGGTGATAAACAACATCCAACCACT

ACGCGTACGCGGCCGCTCGAGCAGAAACTCATCTCAGAAGAGGATCTGGCAGCAAATGATATCCTGGATT
 ACAAGGATGACGACGATAAGGTTTAA

Protein Sequence:

>RC207167 protein sequence
 Red=Cloning site Green=Tags(s)

MPKKEKMAKTPLSDEKQLLLFQQKLLAEEMAKKKERLLSQFLKDKLAKEEHNSALNLNKINTQWRTVLR
 EVKTRELHKDIEILSQTFERVVDCKDNVIKSLAKDLSEAEQYAHALRSHLHNVDQLLALQRHLSLLEE
 SYNMELEALTKEFETERKTIIDQHEKEIHYLQDIFMAMEQNYIDSEYESKLEFQSMWDLKMNLEEKHF
 LRLHLENRVEDLWRKFQDVLKNYTDATEDRKAFFETLQVKDEKSSKEIEVQMKKIQKLQDAITISKGKIM
 IHSRESEDENRYIRNDKELVLVQLRKLKAQRTQARAASQKNLVRLTLESNATLKALRKIVDKGEKILKLA
 EICRKFETEEKVLPFYSSVLPKEQEGIQKNNLEELTEELTKVMVDYIGMENFWKRYNKVKLEQLSLQH
 RRAQLLDINGKLREMLKQYLDGIVSDEVLSQLNPLFIVNYQSNLLQPLSIRIAHPGDKQHPTT

TRTRPLEQKLISEEDLAANDILDYKDDDDKV

Chromatograms:

https://cdn.origene.com/chromatograms/mk6339_a07.zip

Restriction Sites:

Sgfl-MluI

Cloning Scheme:


ACCN: NM_033124

ORF Size: 1452 bp

OTI Disclaimer: The molecular sequence of this clone aligns with the gene accession number as a point of reference only. However, individual transcript sequences of the same gene can differ through naturally occurring variations (e.g. polymorphisms), each with its own valid existence. This clone is substantially in agreement with the reference, but a complete review of all prevailing variants is recommended prior to use. [More info](#)

OTI Annotation: This clone was engineered to express the complete ORF with an expression tag. Expression varies depending on the nature of the gene.

Components: The ORF clone is ion-exchange column purified and shipped in a 2D barcoded Matrix tube containing 10ug of transfection-ready, dried plasmid DNA (reconstitute with 100 ul of water).

Reconstitution Method:

1. Centrifuge at 5,000xg for 5min.
2. Carefully open the tube and add 100ul of sterile water to dissolve the DNA.
3. Close the tube and incubate for 10 minutes at room temperature.
4. Briefly vortex the tube and then do a quick spin (less than 5000xg) to concentrate the liquid at the bottom.
5. Store the suspended plasmid at -20°C. The DNA is stable for at least one year from date of shipping when stored at -20°C.

RefSeq: [NM_033124.5](#)

RefSeq Size: 1832 bp

RefSeq ORF: 1455 bp

Locus ID: 85478

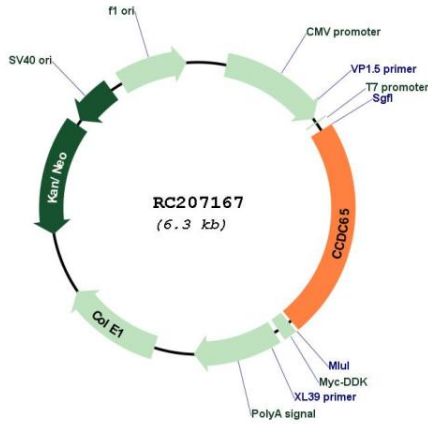
UniProt ID: [Q8IXS2](#)

Cytogenetics: 12q13.12

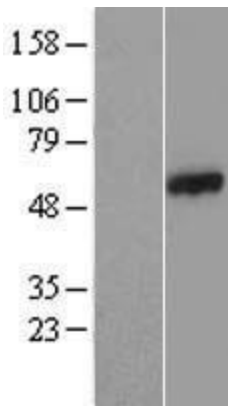
MW: 57.3 kDa

Gene Summary: This gene encodes a sperm tail protein that is highly expressed in adult testis, spermatocytes and spermatids. The protein plays a critical role in the assembly of the nexin-dynein regulatory complex. Mutations in this gene result in primary ciliary dyskinesia. [provided by RefSeq, Nov 2013]

Product images:



Circular map for RC207167



Western blot validation of overexpression lysate (Cat# [LY409729]) using anti-DDK antibody (Cat# [TA50011-100]). Left: Cell lysates from untransfected HEK293T cells; Right: Cell lysates from HEK293T cells transfected with RC207167 using transfection reagent MegaTran 2.0 (Cat# [TT210002]).