

Product datasheet for RC207166

SPIC (NM_152323) Human Tagged ORF Clone

Product data:

Product Type:	Expression Plasmids
Product Name:	SPIC (NM_152323) Human Tagged ORF Clone
Tag:	Myc-DDK
Symbol:	SPIC
Synonyms:	SPI-C
Mammalian Cell Selection:	Neomycin
Vector:	pCMV6-Entry (PS100001)
E. coli Selection:	Kanamycin (25 ug/mL)
ORF Nucleotide Sequence:	>RC207166 ORF sequence Red=Cloning site Blue=ORF Green=Tags(s)

TTTTGTAATACGACTCACTATAGGGCGGCCGGAATTCGTCGACTGGATCCGGTACCGAGGAGATCTGCC
GCC**CGATCGCC**

ATGACGTGTGTTGAACAAGACAAGCTGGGTCAAGCATTGAAGATGCTTTTGAGTTCTGAGGCAACATT
CAACTGGAGATCTTCAGTACTCGCCAGATTACAGAAATTACCTGGCTTTAATCAACCATCGTCCTCATGT
CAAAGGAAATCCAGCTGCTATGGAGTGTGCCTACAGAGGAGCCTGTCTATAATTGGAGAACGGTAATT
AACAGTGTGCGGACTTCTATTTGAAGGAAATATTCATCAATCTCTGCAGAACATAACTGAAAACCAGC
TGGTACAACCCACTCTTCTCCAGCAAAAGGGGGAAAAGGCAGGAAGAAGCTCCGACTGTTGAATACCT
TCACGAATCCCTGTATAATCCGGAGATGGCATCTTGATTCAGTGGGTAGATAAAACCAAAGGCATCTTT
CAGTTTGTATCAAAAAACAAAGAAAACTTGCCGAGCTTTGGGGGAAAAGAAAAGCAACAGGAAGACCA
TGACTTACCAGAAAATGGCCAGGGCACTCAGAAATTACGGAAGAAGTGGGGAAAATACCAAAATCCGGAG
GAAGCTGACTTACCAGTTCAGTGAGGCCATTCTCAAAGACTCTCCATCCTATTTCTGGGAAAAGAG
ATCTTCTATTACAGTGTGTTCAACCTGATCAAGAATATCTCAGTTTAAATAACTGGAATGCAAATTATA
ATTATACATATGCCAATTACCATGAGCTAAATCACCATGATTGC

ACGCGTACGCGGCCGCTCGAGCAGAAACTCATCTCAGAAGAGGATCTGGCAGCAAATGATATCCTGGATT
ACAAGGATGACGACGATAAGGTTTAA



[View online »](#)

Protein Sequence: >RC207166 protein sequence
 Red=Cloning site Green=Tags(s)

MTCVEQDKLGQAFEDAFEVLRQHSTGDLQYSPDYRNYLALINHRPHVKGNSSCYGLPTEEPVYNWRTVI
 NSAADFYFEGNIHQSLQINITENQLVQPTLLQQKGGKGRKKLRLFEYLHESLYNPEMASCIQWVDKTKGIF
 QFVSKNKEKLAELWGKRKGNRKTMTYQKMARALRNYGRSGEITKIRRKLT YQFSEAILQRLSPSYFLGKE
 IFYSQCVQPDQEYLSLNNWNANYNITYANYHELNHDC

TRTRPLEQKLISEEDLAANDILDYKDDDDKV

Chromatograms: https://cdn.origene.com/chromatograms/mk6020_h09.zip

Restriction Sites: SgfI-MluI

Cloning Scheme:

Cloning sites used for ORF Shuttling:



* The last codon before the Stop codon of the ORF

ACCN: NM_152323

ORF Size: 744 bp

OTI Disclaimer: The molecular sequence of this clone aligns with the gene accession number as a point of reference only. However, individual transcript sequences of the same gene can differ through naturally occurring variations (e.g. polymorphisms), each with its own valid existence. This clone is substantially in agreement with the reference, but a complete review of all prevailing variants is recommended prior to use. [More info](#)

OTI Annotation: This clone was engineered to express the complete ORF with an expression tag. Expression varies depending on the nature of the gene.

Components: The ORF clone is ion-exchange column purified and shipped in a 2D barcoded Matrix tube containing 10ug of transfection-ready, dried plasmid DNA (reconstitute with 100 ul of water).

Reconstitution Method:

1. Centrifuge at 5,000xg for 5min.
2. Carefully open the tube and add 100ul of sterile water to dissolve the DNA.
3. Close the tube and incubate for 10 minutes at room temperature.
4. Briefly vortex the tube and then do a quick spin (less than 5000xg) to concentrate the liquid at the bottom.
5. Store the suspended plasmid at -20°C. The DNA is stable for at least one year from date of shipping when stored at -20°C.

RefSeq: [NM_152323.3](#)

RefSeq Size: 1116 bp

RefSeq ORF: 747 bp

Locus ID: 121599

UniProt ID: [Q8N5J4](#)

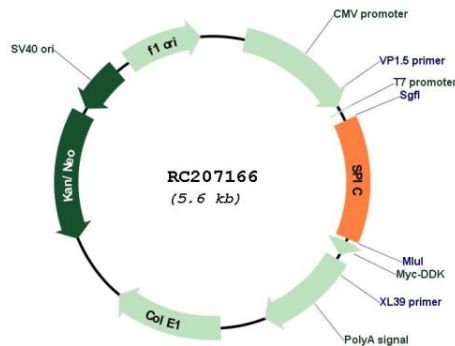
Cytogenetics: 12q23.2

Protein Families: Transcription Factors

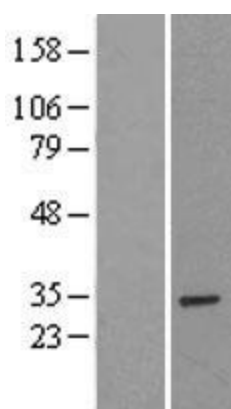
MW: 29.2 kDa

Gene Summary: The protein encoded by this gene regulates the development of red pulp macrophages, which are necessary for iron homeostasis and the recycling of red blood cells. [provided by RefSeq, Aug 2016]

Product images:



Circular map for RC207166



Western blot validation of overexpression lysate (Cat# [LY403462]) using anti-DDK antibody (Cat# [TA50011-100]). Left: Cell lysates from untransfected HEK293T cells; Right: Cell lysates from HEK293T cells transfected with RC207166 using transfection reagent MegaTran 2.0 (Cat# [TT210002]).