

Product datasheet for **RC207165**

AIFM3 (NM_001018060) Human Tagged ORF Clone

Product data:

Product Type:	Expression Plasmids
Product Name:	AIFM3 (NM_001018060) Human Tagged ORF Clone
Tag:	Myc-DDK
Symbol:	AIFM3
Synonyms:	AIFL
Mammalian Cell Selection:	Neomycin
Vector:	pCMV6-Entry (PS100001)
E. coli Selection:	Kanamycin (25 ug/mL)



[View online »](#)

ORF Nucleotide Sequence:

>RC207165 ORF sequence
 Red=Cloning site Blue=ORF Green=Tags(s)

TTTTGTAATACGACTCACTATAGGGCGGCCGGGAATTCGTCGACTGGATCCGGTACCGAGGAGATCTGCC
 GCC**CGGATCGCC**

ATGGGCGGCTGCTTCTCAAACCCAAACCAGTGGAGCTCAAGATCGAGGTGGTGTCTGCCTGAGAAGGAGC
 GAGGCAAGGAGGAGCTGTGCGCCAGTGGGAAGGGCAGCCCCGGGCTACCGAGGCAATGGCACGGCCCG
 CCACTTCCACACGAGGAGCGCCTGTCCACCCCTCACCCCTACCCAGCCCTCAGGATTGCGTGGAGGCT
 GCTGTCTGCCACGTCAAGGACCTCGAGAATGGCCAGATGCGGGAAGTGGAGCTGGGCTGGGGGAAGGTGT
 TGCTGGTGAAGGACAATGGGGAGTTCCACGCCCTGGGCCATAAGTGTCCGCACTACGGCGCACCCCTGGT
 GAAAGGCGTTCTGTCCCCTGGTGGGTGCGCTGCCCTGGCACGGCGCTGCTTCAACATCAGCACTGGG
 GACCTGGAGGACTTCCCTGGCTGGACAGTCTACACAAGTTCAGGTGAAGATTGAGAAGGAGAAGGTGT
 ACGTCCGGCCAGCAAGCAGGCCCTACAGCTGCAGCGAAGGACCAAGGTGATGGCCAAGTGTATCTCTCC
 AAGTGTGGGTACAGCAGTAGCACCAATGTGCTCATTGTGGTGCAGGTGCAGCTGGCCTGGTGTGTGCA
 GAGACTGCGGCAAGGAGGGCTTCTCCGACCGGATCGTCTGTGCAGCTAGACCGGCACCTTCCCTACG
 ACCGTCCCAAGCTCAGCAAGTCCCTGGACACACAGCCTGAGCAGCTGGCCTGAGGCCAAAGGAGTTTTT
 CCGAGCCTATGGCATCGAGGTGCTCACCGAGGCTCAGGTGGTACAGTGGACGTGAGAACTAAGAAGGTC
 GTGTTCAAGGATGGCTTCAAGCTGGAGTACAGCAAGCTGCTGCTGGCACCAGGGAGCAGCCCAAGACTC
 TGAGCTGCAAAGGCAAAGAAGTGGAGAAGCTGTTCACTATCCGGACGCCAGAGGATGCCAATCGCGTGGT
 GAGGCTGGCCCGAGGCCCAACGTGGTTCGTGCTGGGAGCCGGCTTCTGGGGATGGAGGTGGCCGCTTAC
 CTGACGGAGAAGGCCACTCTGTGTCTGTGGTGGAGCTGGAGGAGACGCCCTTCAAGAGGTTCTGGGGG
 AGCGCTGGGTGCTGCCCTCATGAAGATGTTTGAAGAACAACCGGGTGAAGTTCTACATCGACAGGAGGT
 GTCTGAGCTGCGGGGCCAGGAGGAAAGCTGAAGGAGTTGTGCTGAAGAGCAGCAAGGTCGTGCGGGCT
 GACGTCTGCGTGGTGGGATTGGTGCAGTGCCTGCCACAGGCTTCTGAGGCAAAGCGGCATCGGTTTGG
 ATCCCGAGGCTTCACTCCTGTCAACAAGATGATGCAGACCAATGTCCAGGCGTGTGTCAGCTGGCGA
 TGCTGTACCTTCCCCTTGCCTGGAGGAACAACCGCAAAGTGAACATCCACATTGGCAGATGGCTCAT
 GCTCAGGGGCGCTGGCAGCCAGAACATGTTGGCGCAGGAGGCGGAGATGAGCACTGTGCCCTACCTCT
 GGACCGCATGTTTGGCAAGAGCCTGCGCTACGCGGGCTACGGAGAAGGCTTCGACGACGTATCATCCA
 GGGGATCTGGAGGAGCTGAAGTTTGTGGCTTTTACACTAAAGGCGACGAGGTGATCGCGTGGCCAGC
 ATGAACTACGATCCATTGTGTCCAAGGTGCTGAGGTGCTGGCCTCAGGCCGTGCCATCCGGAAGCGGG
 AGGTGGAGACTGGCGACATGTCCTGGCTTACGGGGAAAGGATCC

ACGCGTACGCGGCCGCTCGAGCAGAAACTCATCTCAGAAGAGGATCTGGCAGCAAATGATATCCTGGATT
 ACAAGGATGACGACGATAAGGTTTAA

Protein Sequence:

>RC207165 protein sequence
 Red=Cloning site Green=Tags(s)

MGGCFSKPKPVELKIEVVLPEKERGKEEL SASGKGS PRAYQGNGTARHFHTEERLSTPHYPSPQDCVEA
 AVCHVKDLENGQMREVELGWGKVLVKDNGEFHALGHKCPHYGAPLVKGVLSRGRVRCPPWHGACFNISTG
 DLEDFPGLDSLHKFQVKIEKEKVVYRASKQALQLQRRTKVMACISPSAGYSSSTNVLIVGAGAAGLVCA
 ETLRQEGFSDRIVLCTLRHLPYDRPKLSKSLDTQPEQLALRPKEFFRAYGIEVLTEAQVTVDRTKKV
 VFKDGFKLEYSKLLLAPGSSPKTLSCKGKEVENVFTIRTPEDANRVVRLARGRNVVVVGAGFLGMEVAAY
 LTEKAHSVSVVELEETPFRRFLGERVGRALMKMFENNRVKFYMQTEVSELRGQEGKLKEVVLKSSKVVRA
 DVCVVGIGAVPATGFLRQSGIGLDSRGFIPVNMQMOTNVPGVFAAGDAVTFPLAWRNNRKNIPHWQMAH
 AQGRVAAQNMLAQEAEMSTVPYLWTAMFGKSLRYAGYGEFDDVVIQGDLEELKFVAFYTKGDEVI AVAS
 MNYDPIVSKVAEVLASGRAIRKREVETGDMSWLTGKGS

TRTRPLEQKLISEEDLAANDILDYKDDDDKV

Chromatograms:

https://cdn.origene.com/chromatograms/mk6334_e04.zip

Restriction Sites: SgfI-MluI

Cloning Scheme:



ACCN: NM_001018060

ORF Size: 1794 bp

OTI Disclaimer: The molecular sequence of this clone aligns with the gene accession number as a point of reference only. However, individual transcript sequences of the same gene can differ through naturally occurring variations (e.g. polymorphisms), each with its own valid existence. This clone is substantially in agreement with the reference, but a complete review of all prevailing variants is recommended prior to use. [More info](#)

OTI Annotation: This clone was engineered to express the complete ORF with an expression tag. Expression varies depending on the nature of the gene.

Components: The ORF clone is ion-exchange column purified and shipped in a 2D barcoded Matrix tube containing 10ug of transfection-ready, dried plasmid DNA (reconstitute with 100 ul of water).

- Reconstitution Method:
1. Centrifuge at 5,000xg for 5min.
 2. Carefully open the tube and add 100ul of sterile water to dissolve the DNA.
 3. Close the tube and incubate for 10 minutes at room temperature.
 4. Briefly vortex the tube and then do a quick spin (less than 5000xg) to concentrate the liquid at the bottom.
 5. Store the suspended plasmid at -20°C. The DNA is stable for at least one year from date of shipping when stored at -20°C.

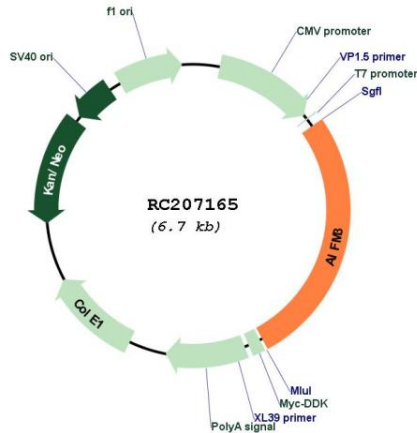
RefSeq: [NM_001018060.3](#)

RefSeq Size: 2354 bp

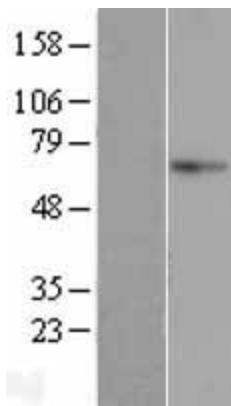
RefSeq ORF: 1797 bp

Locus ID: 150209

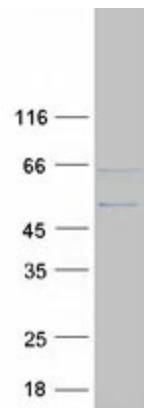
UniProt ID: [Q96NN9](#)
Cytogenetics: 22q11.21
Protein Families: Druggable Genome
MW: 66 kDa
Gene Summary: Induces apoptosis through a caspase dependent pathway. Reduces mitochondrial membrane potential.[UniProtKB/Swiss-Prot Function]

Product images:


Circular map for RC207165



Western blot validation of overexpression lysate (Cat# [LY422714]) using anti-DDK antibody (Cat# [TA50011-100]). Left: Cell lysates from untransfected HEK293T cells; Right: Cell lysates from HEK293T cells transfected with RC207165 using transfection reagent MegaTran 2.0 (Cat# [TT210002]).



Coomassie blue staining of purified AIFM3 protein (Cat# [TP307165]). The protein was produced from HEK293T cells transfected with AIFM3 cDNA clone (Cat# RC207165) using MegaTran 2.0 (Cat# [TT210002]).