

## Product datasheet for **RC207159**

### HEXD (NM\_173620) Human Tagged ORF Clone

#### Product data:

Product Type:	Expression Plasmids
Product Name:	HEXD (NM_173620) Human Tagged ORF Clone
Tag:	Myc-DDK
Symbol:	HEXD
Synonyms:	HEXDC
Mammalian Cell Selection:	Neomycin
Vector:	pCMV6-Entry (PS100001)
E. coli Selection:	Kanamycin (25 ug/mL)



[View online »](#)

**ORF Nucleotide Sequence:**

>RC207159 ORF sequence  
 Red=Cloning site Blue=ORF Green=Tags(s)

TTTTGTAATACGACTCACTATAGGGCGGCCGGAATTCGTCGACTGGATCCGGTACCGAGGAGATCTGCC  
 GCC**CGGATCGCC**

ATGGAGTTTGTGCTGAAGCACACGGCCTTCGCCACCTGCGGGAGGTGGGCTCCTCCCTGCACCCTGA  
 ACCCCACGAGGAGAGTCCCTGGCGCTGGTGGCGCCATGATTGACCAGGTCTGGAGCTACACCCAGG  
 CGCCACGCGCTGCACATCGGGTGTGATGAGGTCTATTACCTCGAGAGGGGGAGGCCTCGCGCCGGTGG  
 CTACAGCAAGAGCAGAACAGCACGGGAAGTTGTGCCTGTACACATGCGGGCGGTGCCAGCGCGTGA  
 AGGCCCGCGCCCGAGCGTGACACCCCTGGTGTGGGACGACATGCTCCGAGACCTGCCTGAGGACCAGCT  
 CGCAGCGTCCGGGTGCCGAGCTGGTGGAGCCGGTCTCTGGGACTACACGGCCGACCTGGATGTGTAC  
 GGCAAGGTCTCCTCATGCAGAAGTACCGCGGTGCGGCTTCCGAGCTGTGGGAGCCAGTGCCTTCA  
 AGGGTCCACGGGGCCAGCCAGGCCGTGCCCTGTTGAGCACCTCAGGAACCACGTGCAGTGGCT  
 GCAGGTGGCGGGCAGCGGCCACGGACTCACTGCAGGGCATCATCTGACCGGCTGGCAGAGGTACGAC  
 CACTACTCTGTGCTGTGCGAGCTGCTGCCCGCAGGAGTCCCGTCCCTGGCCGCTGCCTGCAGTTGCTTC  
 TACGCGGAGGATTTGATGAAGATGTTAAAGCGAAAGTGGAGAACCTTCTCGGGATTTCCAGCCTGAAAA  
 AACGGACCCTGTAGGCAAGCACCTGCAGCCCTCCCTGTCCCCTTCTCCCTCCCTCCCTCCCTCCCTCCG  
 TGGAGACAGCTGTTCTCAGCAGGGCTCTCCGAGGGAGGGGGCGGCTCCTTCCCTGGCAGCAACATCCT  
 TGCCCTTGTACACAAGTCAAGCTCCATCTGCGCAGCTCTGTGGATGCGCTGTGGAGGGCAACAGGTAT  
 GTCAGTGGCTGGTTCAGCCCTACCACCGCCAGCGGAAGCTCATCCACCCGGTATGGTTACGACATCC  
 AGCCCGCAGCGCTCAGCCTCTGGCACAGTGGAGCACCTCGTGCAGGAGCTGGAGGCTGCCCTGCAGT  
 GGCTTTCTACCCGGATGCCGTGGAGGAGTGGCTGGAGGAAAACGTGACACCCAGCCTGCAGCGGTCGAA  
 GCTCTGCTGCAGGACCTCAGCAGGTGTCTGCCCGGCTGCCACCCAGCCCTGGCAGGGAGGTTG  
 CTAGGACCCCTGAGGGAGAGCTCATGCCAGGGGCTCCTGCTGGAGGCTGGGGGGCTCTGCACTGCC  
 AAATGGCTGGGCAATACGGGCCACGTGGGCGTCTGTCCTCTGGCCAGCAGTGTCTTGGCCACACTC  
 AGTTCTGAGGGCCCTGGCAGCCCTGGGGGAGAGACTAGAAAACACAGAAGGAAGCAGCACAGGGAGA  
 CCCGCTTTG

**ACGCGT**ACGCGGGCCGCTCGAGCAGAACTCATCTCAGAAGAGGATCTGGCAGCAATGATATCTGGATT  
 ACAAGGATGACGACGATAAGGTTTAA

**Protein Sequence:**

>RC207159 protein sequence  
 Red=Cloning site Green=Tags(s)

MEFVLKHTAF AHLREVGSPFCTLNPHEAESLALVGAMIDQVLELHPGAQRLHIGCDEVYYLGEGEASRRW  
 LQQEQNSTGKLC LSHMRAVASGVKARRPSVTPLVWDDMLRDL PEDQLAASGVPQLVEPVLWDYADLDVY  
 GKVLLMQKYRRCGFPQLWAASAFKATGPSQAVPPVEHHLRNHVQWLQVAGSGPTDSLQGIILTWQRYD  
 HYSVLCCELLPAGVPSLAACLQLLLRGGFDEDVKAKVENLLGISSLEKTD PVRQAPCSPPCPLLPLPFRP  
 WRQLFSAGLSAGRGPAPSLAATSLPLSHKSASICAALWMRCWRATGMSLAGSAPTTASGSSSTRSWFSTS  
 SPQRSASWHSGAPSCRSWRLPCSWLSTRMPWRSGWRKCTPACSGCKLCCRTSARCLPPRCHPPALAGTL  
 LRTPEGRAHARGLLLEAGGALHCQMAWAIRAHVGVVPSGPAVSCPHSVPEGPGQPLGERLENTEGSSTGR  
 PAL

**TR**TRPLEQKLI SEEDLAANDILDYKDDDDKV

**Chromatograms:**

[https://cdn.origene.com/chromatograms/mk6518\\_c10.zip](https://cdn.origene.com/chromatograms/mk6518_c10.zip)

**Restriction Sites:**

Sgfl-Mlul

**Cloning Scheme:**

**ACCN:** NM\_173620

**ORF Size:** 1479 bp

**OTI Disclaimer:** Due to the inherent nature of this plasmid, standard methods to replicate additional amounts of DNA in E. coli are highly likely to result in mutations and/or rearrangements. Therefore, OriGene does not guarantee the capability to replicate this plasmid DNA. Additional amounts of DNA can be purchased from OriGene with batch-specific, full-sequence verification at a reduced cost. Please contact our customer care team at [custsupport@origene.com](mailto:custsupport@origene.com) or by calling 301.340.3188 option 3 for pricing and delivery.

The molecular sequence of this clone aligns with the gene accession number as a point of reference only. However, individual transcript sequences of the same gene can differ through naturally occurring variations (e.g. polymorphisms), each with its own valid existence. This clone is substantially in agreement with the reference, but a complete review of all prevailing variants is recommended prior to use. [More info](#)

**OTI Annotation:** This clone was engineered to express the complete ORF with an expression tag. Expression varies depending on the nature of the gene.

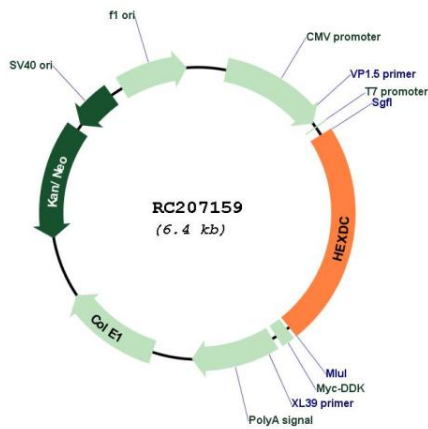
**Components:** The ORF clone is ion-exchange column purified and shipped in a 2D barcoded Matrix tube containing 10ug of transfection-ready, dried plasmid DNA (reconstitute with 100 ul of water).

- Reconstitution Method:**
1. Centrifuge at 5,000xg for 5min.
  2. Carefully open the tube and add 100ul of sterile water to dissolve the DNA.
  3. Close the tube and incubate for 10 minutes at room temperature.
  4. Briefly vortex the tube and then do a quick spin (less than 5000xg) to concentrate the liquid at the bottom.
  5. Store the suspended plasmid at -20°C. The DNA is stable for at least one year from date of shipping when stored at -20°C.

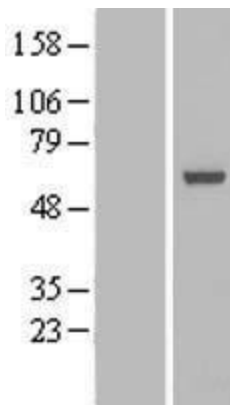
**RefSeq:** [NM\\_173620.1, NP\\_775891.1](#)  
**RefSeq Size:** 2272 bp  
**RefSeq ORF:** 1758 bp  
**Locus ID:** 284004  
**UniProt ID:** [Q8WVB3](#)  
**Cytogenetics:** 17q25.3  
**MW:** 53.2 kDa

**Gene Summary:** Has hexosaminidase activity. Responsible for the cleavage of the monosaccharides N-acetylglucosamine (GlcNAc) and N-acetylgalactosamine (GalNAc) from cellular substrates. Has a preference for galactosaminide over glucosaminide substrates (PubMed:27149221). [UniProtKB/Swiss-Prot Function]

### Product images:



Circular map for RC207159



Western blot validation of overexpression lysate (Cat# [LY406510]) using anti-DDK antibody (Cat# [TA50011-100]). Left: Cell lysates from untransfected HEK293T cells; Right: Cell lysates from HEK293T cells transfected with RC207159 using transfection reagent MegaTran 2.0 (Cat# [TT210002]).