

Product datasheet for RC207156

GIMAP2 (NM_015660) Human Tagged ORF Clone

Product data:

Product Type:	Expression Plasmids
Product Name:	GIMAP2 (NM_015660) Human Tagged ORF Clone
Tag:	Myc-DDK
Symbol:	GIMAP2
Synonyms:	HIMAP2; IAN12; IMAP2
Mammalian Cell Selection:	Neomycin
Vector:	pCMV6-Entry (PS100001)
E. coli Selection:	Kanamycin (25 ug/mL)
ORF Nucleotide Sequence:	>RC207156 ORF sequence Red=Cloning site Blue=ORF Green=Tags(s)

TTTTGTAATACGACTCACTATAGGGCGGCCGGAATTCGTCGACTGGATCCGGTACCGAGGAGATCTGCC
GCC**CGATCGCC**

ATGGACAAAAATGAACACAGTCACTGGGGACCACATGCAAAGGGCCAATGTGCCAGCAGATCTGAGCTGA
GAATCATCCTGGTGGGCAAAACAGGAAGTGGCAAAAGTGTGCAGGGAACAGCATCCTCAGGAAGCAAGC
ATTTGAATCGAAGCTGGGTTCCAGACCTTGACTAAGACTTGCAGCAAAAGTCAGGGAAGCTGGGAAAT
AGAGAGATTGTCATTATTGACACACCAGATATGTTTTCTTGAAGGACCACTGTGAAGCTCTGTACAAG
AGGTGCAGAGGTGCTACTTGTCTGCACCAGGACCCATGTGTGCTCCTGGTACTCAGCTGGGCCG
CTATACCTCACAGGACCAGCAGGCTGCACAGAGGGTGAAGGAGATCTTTGGAGAGGATGCCATGGGACAC
ACAATTGTCCTCTTTACCCACAAGGAAGACCTCAATGGTGGCTCCCTGATGGATTACATGACGACTCAG
ATAACAAAGCCCTAAGCAAGCTGGTGGCAGCATGTGGTGGGCGAATCTGTGCCTTTAATAACCGTGTCTGA
AGGGAGCAATCAGGATGACCAAGTGAAGGAACTAATGGACTGTATTGAGGATCTGTTGATGGAGAAAAAT
GGTGATCACTATAACCAATGGGTTGTACAGCCTAATACAGAGGTCTAAATGTGGACCTGTGGGATCAGATG
AAAGAGTAAAGGAATTCAAACAGAGCCTTATAAAGTACATGAAACTCAAAGAAGTTACACAGCCTTGGC
TGAAGCAAAGTGCCTAAAAGGAGCCTTAATCAAAACACAAGTGTGTGTTTTATTTGATTTCAGTTGTTT
CTCAGATTGATAATTCTGTGGCTTTGCATACTGCACAGCATGTGCAATTTGTTTTGTTTACTCTTTA
GTATGTGCAATTTATTCTGCAGTTTGTGTTTTATTATACCCAAAAGTTAATGATATTTTGGAGAACAGT
TATTAGACTAGAACGCAAGACTCCTAGGTTA

ACGCGTACGCGGCCGCTCGAGCAGAAACTCATCTCAGAAGAGGATCTGGCAGCAATGATATCCTGGATT
ACAAGGATGACGACGATAAGGTTTAA



[View online »](#)

Protein Sequence: >RC207156 protein sequence
 Red=Cloning site Green=Tags(s)

```
MDQNEHSHWGPFAKGCASRSELRIILVGKTGTGKSAAGNSILRKQAFESKLGSQLTKTCSKSQGSWGN
REIVIIDTPDMFSWKDHCEALYKEVQRCYLLSAPGPHVLLLVTLGQRYTSQDQQAQRVKEIFGEDAMGH
TIVLFTHKEDLNGGSLMDYMHSDNKAISKLVAAACGGRIACFNNRAEGSNQDDQVKELMDCIEDLLMEKN
GDHYTNGLYSLIQRSKCGPVGSDERVKEFKQSLIKYMETQRSYALAEANCLKGALIKTQLCVLFCIQLF
LRLIILWLCILHSMCNLFCCLLFSMCNLFCSLLFIIPKKLMIFLRTVIRLERKTPRL
```

TRTRPLEQKLISEEDLAANDILDYKDDDDKV

Chromatograms: https://cdn.origene.com/chromatograms/mk6333_a06.zip

Restriction Sites: SgfI-MluI

Cloning Scheme:

Cloning sites used for ORF Shuttling:



* The last codon before the Stop codon of the ORF

ACCN: NM_015660

ORF Size: 1011 bp

OTI Disclaimer: The molecular sequence of this clone aligns with the gene accession number as a point of reference only. However, individual transcript sequences of the same gene can differ through naturally occurring variations (e.g. polymorphisms), each with its own valid existence. This clone is substantially in agreement with the reference, but a complete review of all prevailing variants is recommended prior to use. [More info](#)

OTI Annotation: This clone was engineered to express the complete ORF with an expression tag. Expression varies depending on the nature of the gene.

Components: The ORF clone is ion-exchange column purified and shipped in a 2D barcoded Matrix tube containing 10ug of transfection-ready, dried plasmid DNA (reconstitute with 100 ul of water).

Reconstitution Method:

1. Centrifuge at 5,000xg for 5min.
2. Carefully open the tube and add 100ul of sterile water to dissolve the DNA.
3. Close the tube and incubate for 10 minutes at room temperature.
4. Briefly vortex the tube and then do a quick spin (less than 5000xg) to concentrate the liquid at the bottom.
5. Store the suspended plasmid at -20°C. The DNA is stable for at least one year from date of shipping when stored at -20°C.

RefSeq: [NM_015660.3](#)

RefSeq Size: 1523 bp

RefSeq ORF: 1014 bp

Locus ID: 26157

UniProt ID: [Q9UG22](#)

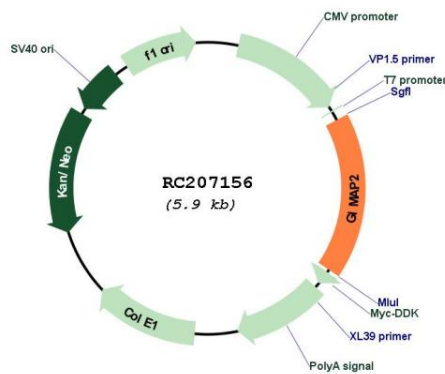
Cytogenetics: 7q36.1

Protein Families: Transmembrane

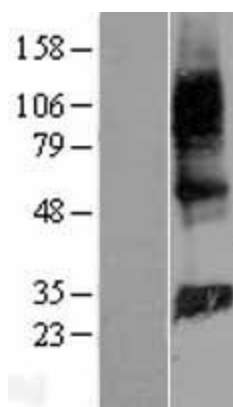
MW: 38 kDa

Gene Summary: This gene encodes a protein belonging to the GTP-binding superfamily and to the immuno-associated nucleotide (IAN) subfamily of nucleotide-binding proteins. In humans, the IAN subfamily genes are located in a cluster at 7q36.1. [provided by RefSeq, Jul 2008]

Product images:



Circular map for RC207156



Western blot validation of overexpression lysate (Cat# [LY414421]) using anti-DDK antibody (Cat# [TA50011-100]). Left: Cell lysates from untransfected HEK293T cells; Right: Cell lysates from HEK293T cells transfected with RC207156 using transfection reagent MegaTran 2.0 (Cat# [TT210002]).