

Product datasheet for **RC207151**

IRF2BP1 (NM_015649) Human Tagged ORF Clone

Product data:

Product Type:	Expression Plasmids
Product Name:	IRF2BP1 (NM_015649) Human Tagged ORF Clone
Tag:	Myc-DDK
Symbol:	IRF2BP1
Mammalian Cell Selection:	Neomycin
Vector:	pCMV6-Entry (PS100001)
E. coli Selection:	Kanamycin (25 ug/mL)



[View online »](#)

ORF Nucleotide Sequence:

>RC207151 ORF sequence
 Red=Cloning site Blue=ORF Green=Tags(s)

TTTTGTAATACGACTCACTATAGGGCGGCCGGAATTCGTCGACTGGATCCGGTACCGAGGAGATCTGCC
 GCC**CGGATCGCC**

ATGGCGTCTGTGCAGGCGTCCCGCCAGTGGTGTACCTGTGCGACCTGCCAAGATGCCGTGGGCCA
 TGGTGTGGGACTTCAGCGAGGCCGTGTGTCGCGCTGCGTGAACCTCAGGGCGCGGACCGCATCGAACT
 GCTCATCGATGCCGCCCGCCAGCTCAAGCGCAGCCACGTGCTCCCGAGGGCCGCTCGCCCGGGCCCCCG
 GCCCTTAAGCACCCGCCACCAAGGACCTGGCGCGCAGCCGCACAGGGGCCAGCTGCCGCCCCCGC
 AGGCCAGCCCCAGCCGTAGGGACCGCGCGCGGTGTGCGGCCAGGACCGCTATGACAGGGCCACATC
 ATCAGGCCGCTCCCTCGCCCTCGCCCGCTGGAGTACACTCTGGGGTCCCGCTGGCAATGGGCTG
 GGCGTGAGGAGCCGTGGCTGAGGGGGCGGAAGGGCTTGCTGGCTCCATGCCTGGCTTGTATGCCCC
 CTGGGCTGCTGGCAGCTGCAGTGTCTGGCTGGGAAGCCGAGGCCTGACGCTGGCACCCGGCTTGTAGTCC
 TGCCCGTCCCTCTTCGGCTCCGATTCGAGAAAGAGAAGCAGCAGAGGAATGCGGACTGTCTGGCAGAA
 CTGAACGAGGCCATGCGAGGCCGCGCAGAGGAATGGCACGGGCGCCCAAGCAGTGCGGGAACAGCTAC
 TGGCGCTGTCGCTCGCCCGCTTCAATGTGCGCTTCAAGAAGGATCACGGGCTGGTGGGGCGAGTGT
 CGCCTTCGATGCTACTGCCCGTCTCCAGGATACGAGTTCGAGCTGAAGCTTTCACCGAATACCCCTGT
 GGTTCGGCAATGTGTACGCCGGCGTCTGGCAGTGGCTCGCCAGATGTTCCACGATGCTCTGCGGGAGC
 CGGGCAAGGCACTGGCTTCTTCGGGCTTCAAGTACCTCGAATATGAACGCCGGCATGGATCAGGAGAATG
 GCGGCAGCTGGCGAGCTGCTTACCGACGGCGTCCGACGTTCCGCGAGCCAGCTCCCGCGGAGGCCCTG
 CCCCAGCAGTACCCAGAGCCGGCCCTCGCGCTCTCTGTGGCCACCCCGCGAGCCCCATCCCGGAACC
 TGGCCCCACGCCGCGCTCGCAAGGCATCCCCGAGCCGGAGGGCGAGGCGGCTGGGAAGATGACCAC
 CGAGGAGCAGCAACGCACCTGGGTGGCACCCGGCGGCCGTAATCCGCTGAGACCCCTGGTGTGCC
 TCGCCATTGCCCGCTGAAGAATGTGGCCGAAGCCCTGGGCCACTCACCAAGGACCCTGGCGGAGGCG
 GGGGGCTGTGCGTGCAGGGGGCGCCAGCCCTGCAGCCTCTCCACGGCCAGCCGCCAACCAGCATCG
 CCTTGTGGCCCGCAACGGCGAAGCAGAAGTCACTCCACAGCGGGGGCGAAGCTGTGAGCGGGGTGGC
 AGCGGCACTGGGGCGACCCCTGGGGCCCCCTGTGCTGTACCCTGTGAGGGAGCGGCTGGAAGACACC
 ACTTCGTCAGTCCCTCGGTGCCCGGACACAAGTTCGCTTTCCTGCTCCCGGGAGTTCATCAAGGC
 GCAGGGCCCGCGGGGAGGTGTACTGCCCGAGCGGAGACAAGTCCCGCTGGTGGCTCCTCCGTGCC
 TGGGCTTCATGCAGGGCGAGATCGCCACCATCTTGCTGGAGACATCAAAGTTAAGAAAGAACGGGACC
 CC

ACGCGTACGCGGGCCGCTCGAGCAGAAACTCATCTCAGAAGAGGATCTGGCAGCAAATGATATCCTGGATT
 ACAAGGATGACGACGATAAGGTTTAA

Protein Sequence:

>RC207151 protein sequence
 Red=Cloning site Green=Tags(s)

MASVQASRRQWCYLCDLPKMPWAMVWDFSEAVCRGCVNFEGADRIELLIDAARQLKRSHVLPGRSPGPP
 ALKHPATKDLAAAAAQGPQLPPPQAQPQPSGTGGVSGQDRYDRATSSGRLPLPSPALEYTLGSRLANGL
 GREEVAEAGARRALLGSMPGLMPPGLLAAVSLGSRGLTLAPGLSPARPLFGSDFEKEKQRNADCLAE
 LNEAMRGRAEWHGRPKAVREQLLALSACAPFNVRFKDHLVGRVFAFDATARPPGYEFELKLFTEYPC
 GSGNVYAGVLAVARQMFHDALREPGKALASSGFKYLEYERRHSGSEWRQLGELLTDGVRSFREPAPAEAL
 PQQYPEPAPAALCGPPRAPSRLNAPTRRRKASPEPEGEAAGKMTTEEQQQRHWVAPGGPYSAETPGVP
 SPIAALKNVAEALGHSPKDPGGGGPVRAGGASPAASSTAQPPTQHRLVARNGEAEVSPTAGAEAVS
 SGTGATPGAPLCTLCRERLEDTHFVQCPVPGHKFCFPCSRFKAQGPAGEVYCPSGDKCPLVGS
 SVPWAFMQGEIATILAGDIKVKKERDP

TRTRPLEQKLISEEDLAANDILDYKDDDDKV

Chromatograms:

https://cdn.origene.com/chromatograms/mk6772_d06.zip

Restriction Sites: SgfI-MluI

Cloning Scheme:



ACCN: NM_015649

ORF Size: 1752 bp

OTI Disclaimer: The molecular sequence of this clone aligns with the gene accession number as a point of reference only. However, individual transcript sequences of the same gene can differ through naturally occurring variations (e.g. polymorphisms), each with its own valid existence. This clone is substantially in agreement with the reference, but a complete review of all prevailing variants is recommended prior to use. [More info](#)

OTI Annotation: This clone was engineered to express the complete ORF with an expression tag. Expression varies depending on the nature of the gene.

Components: The ORF clone is ion-exchange column purified and shipped in a 2D barcoded Matrix tube containing 10ug of transfection-ready, dried plasmid DNA (reconstitute with 100 ul of water).

- Reconstitution Method:**
1. Centrifuge at 5,000xg for 5min.
 2. Carefully open the tube and add 100ul of sterile water to dissolve the DNA.
 3. Close the tube and incubate for 10 minutes at room temperature.
 4. Briefly vortex the tube and then do a quick spin (less than 5000xg) to concentrate the liquid at the bottom.
 5. Store the suspended plasmid at -20°C. The DNA is stable for at least one year from date of shipping when stored at -20°C.

RefSeq: [NM_015649.1](#), [NP_056464.1](#)

RefSeq Size: 2630 bp

RefSeq ORF: 1755 bp

Locus ID: 26145

UniProt ID: [Q8IU81](#)

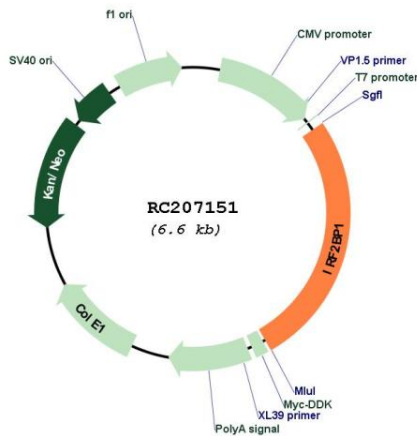
Cytogenetics: 19q13.32

Protein Families: Druggable Genome

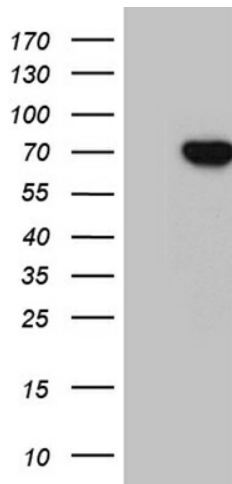
MW: 61.7 kDa

Gene Summary: Acts as a transcriptional corepressor in a IRF2-dependent manner; this repression is not mediated by histone deacetylase activities. May act as an E3 ligase towards JDP2, enhancing its polyubiquitination. Represses ATF2-dependent transcriptional activation.[UniProtKB/Swiss-Prot Function]

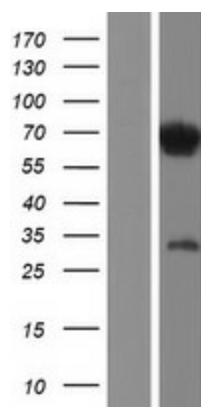
Product images:



Circular map for RC207151



HEK293T cells were transfected with the pCMV6-ENTRY control (Cat# [PS100001], Left lane) or pCMV6-ENTRY IRF2BP1 (Cat# RC207151, Right lane) cDNA for 48 hrs and lysed. Equivalent amounts of cell lysates (5 ug per lane) were separated by SDS-PAGE and immunoblotted with anti-IRF2BP1 (Cat# [TA811716])(1:2000). Positive lysates [LY414410] (100ug) and [LC414410] (20ug) can be purchased separately from OriGene.



Western blot validation of overexpression lysate (Cat# [LY414410]) using anti-DDK antibody (Cat# [TA50011-100]). Left: Cell lysates from untransfected HEK293T cells; Right: Cell lysates from HEK293T cells transfected with RC207151 using transfection reagent MegaTran 2.0 (Cat# [TT210002]).