

Product datasheet for **RC207144**

PPM1K (NM_152542) Human Tagged ORF Clone

Product data:

Product Type:	Expression Plasmids
Product Name:	PPM1K (NM_152542) Human Tagged ORF Clone
Tag:	Myc-DDK
Symbol:	PPM1K
Synonyms:	BDP; MSUDMV; PP2Ckappa; PP2Cm; PTMP; UG0882E07
Mammalian Cell Selection:	Neomycin
Vector:	pCMV6-Entry (PS100001)
E. coli Selection:	Kanamycin (25 ug/mL)
ORF Nucleotide Sequence:	>RC207144 ORF sequence Red=Cloning site Blue=ORF Green=Tags(s)

TTTTGTAATACGACTCACTATAGGGCGGCCGGAATTCGTCGACTGGATCCGGTACCGAGGAGATCTGCC
GCC**CGATCGCC**

ATGTCAACAGCTGCCTTAATTACTTTGGTCAGAAAGTGGTGGGAACCAGGTGAGAAGGAGAGTGCTGCTAA
GCTCCCGCTGCTGCAGGACGACAGGGGTGACACCCACGTGCCACAGCTCCACTTCAGAGCCTAGGTG
TTCTCGGTTTGACCCAGATGGTAGTGGGAGTCCAGCTACCTGGGACAATTTGGGATCTGGGATAACCGC
ATTGATGAGCCAATTCTGCTGCCACCCAGCATTAAAGTATGGCAAGCCAATCCCAAAATCAGCTTGAAA
AGGTGGGGTGCCTCACAGATTGGCAAACGAAAGAGAATGAAGATCGGTTTGACTTCGCTCAGCTGAC
AGATGAGGTCCTGTACTTTGCAGTGTATGATGGACACGGTGGACCTGCAGCAGCTGATTTCTGTCATACC
CACATGGAGAAATGTATTATGGATTTGCTTCTAAGGAGAAGAATTGGAAACTCTGTTGACCTTGCTT
TTCTAGAAATAGATAAAGCCTTTTCGAGTCATGCCCGCTGTCTGCTGATGCAACTCTTCTGACCTCTGG
GACTACTGCAACAGTAGCCCTATTGCGAGATGGTATTGAACTGGTTGTAGCCAGTGTGGGGACAGCCGG
GCTATTTGTGTAGAAAAGGAAAACCATGAAGCTGACCATTGACCATACTCCAGAAAAGAAAAGATGAAA
AAGAAAGGATCAAGAAATGTGGTGGTTTTGTAGCTTGGAAATGTTGGGGCAGCCTCACGTAATGGCAG
GCTTGAATGACAAGAAGTATTGGAGATTTGGACCTTAAGACCAGTGGTGTATAGCAGAACCTGAAACT
AAGAGGATTAAGTTACATCATGCTGATGACAGCTTCTGGTCTCACCACAGATGGAATTAACCTCATGG
TGAATAGTCAAGAGATTTGTACTTTGTCAATCAGTGCCATGATCCCAACGAAGCAGCCCATGCGGTGAC
TGAACAGGCAATACAGTACGGTACTGAGGATAACAGTACTGCAGTAGTAGTGCCTTTTGGTGCCTGGGGA
AAATATAAGAACTCTGAAATCAACTTCTCATTACGAGAAGCTTTGCCTCCAGTGGACGATGGGCC

ACGCGTACGCGGCCGCTCGAGCAGAAACTCATCTCAGAAGAGGATCTGGCAGCAAATGATATCCTGGATT
ACAAGGATGACGACGATAAGGTTAA



[View online »](#)

Reconstitution Method:

1. Centrifuge at 5,000xg for 5min.
2. Carefully open the tube and add 100ul of sterile water to dissolve the DNA.
3. Close the tube and incubate for 10 minutes at room temperature.
4. Briefly vortex the tube and then do a quick spin (less than 5000xg) to concentrate the liquid at the bottom.
5. Store the suspended plasmid at -20°C. The DNA is stable for at least one year from date of shipping when stored at -20°C.

RefSeq: [NM_152542.2](#), [NP_689755.2](#)

RefSeq Size: 6590 bp

RefSeq ORF: 1119 bp

Locus ID: 152926

UniProt ID: [Q8N3J5](#)

Cytogenetics: 4q22.1

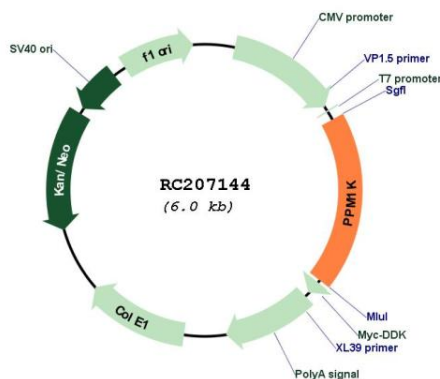
Domains: PP2C

Protein Families: Phosphatase

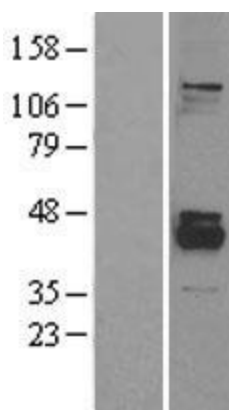
MW: 41 kDa

Gene Summary: This gene encodes a member of the PPM family of Mn²⁺/Mg²⁺-dependent protein phosphatases. The encoded protein, essential for cell survival and development, is targeted to the mitochondria where it plays a key role in regulation of the mitochondrial permeability transition pore. [provided by RefSeq, Sep 2012]

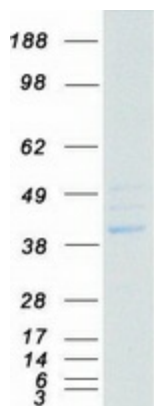
Product images:



Circular map for RC207144



Western blot validation of overexpression lysate (Cat# [LY403474]) using anti-DDK antibody (Cat# [TA50011-100]). Left: Cell lysates from untransfected HEK293T cells; Right: Cell lysates from HEK293T cells transfected with RC207144 using transfection reagent MegaTran 2.0 (Cat# [TT210002]).



Coomassie blue staining of purified PPM1K protein (Cat# [TP307144]). The protein was produced from HEK293T cells transfected with PPM1K cDNA clone (Cat# RC207144) using MegaTran 2.0 (Cat# [TT210002]).