

## Product datasheet for **RC207142**

### **FAM133B (NM\_152789) Human Tagged ORF Clone**

#### Product data:

Product Type:	Expression Plasmids
Product Name:	FAM133B (NM_152789) Human Tagged ORF Clone
Tag:	Myc-DDK
Symbol:	FAM133B
Mammalian Cell Selection:	Neomycin
Vector:	pCMV6-Entry (PS100001)
E. coli Selection:	Kanamycin (25 ug/mL)
ORF Nucleotide Sequence:	>RC207142 ORF sequence Red=Cloning site Blue=ORF Green=Tags(s)

TTTTGTAATACGACTCACTATAGGGCGGCCGGAATTCGTCGACTGGATCCGGTACCGAGGAGATCTGCC  
GCC**CGATCGCC**

ATGAACCCAATAGCAATGGCGAGATCAAGGGTCCAATCCAGTCTTCAGGGCCAACAATACAGGATTATC  
TGAATCGACCAAGGCCTACCTGGGAAGAAGTAAAAGAGCAACTAGAAAAGAAAAGAAAGGCTCCAAGGC  
TTTGGCTGAATTTGAAGAAAAATGAATGAGAAGTGAAGAAAGAACTGGAAAAACACAGGGAGAAATG  
TTAAGTGAAGTGAGAGCTCATCAAAAAAGACAGAGAAAGAAAAGAAAAGAAAGAAATCTGGTAGGT  
ATTCATCTTCTTTCATCAAGCTCTGATCTTCCAGCAGTCTTCTGATTCTGAAGATGAGGATAAGAA  
ACAAGGAAAACGGAGAAAAGAAAAGAAAGAACCGTTCACATAAATCTTCTGAAAGCTCCATGTCAGAACT  
GAATCAGACAGTAAGGATAGTTTAAAAAGAAAAGAAAGTCAAAAGATGGAAGTGAAGAAAAGGATA  
TTAAAGGACTCAGCAAAAAGAGAAAGTGTATTCTGAAGATAAACCTTTATCATCTGAGTCTTGTGAGA  
ATCAGAGTATATTGAGGAGGTGCGAGCAAAAAGAAAAGCAGTGAAGAACGAGAAAAGCAACAGAA  
AAAACAAAAGAAAAGAACATAAGAAACACAGTAAGAAGAAGAAAAGAAAGGCTGCTAGTTCAGTCAAGTC  
CTGACTCACCA

**ACGCGT**ACGCGGCCGCTCGAGCAGAACTCATCTCAGAAGAGGATCTGGCAGCAAATGATATCTGGATT  
ACAAGGATGACGACGATAAGGTTTAA



[View online »](#)

**Protein Sequence:** >RC207142 protein sequence  
Red=Cloning site Green=Tags(s)

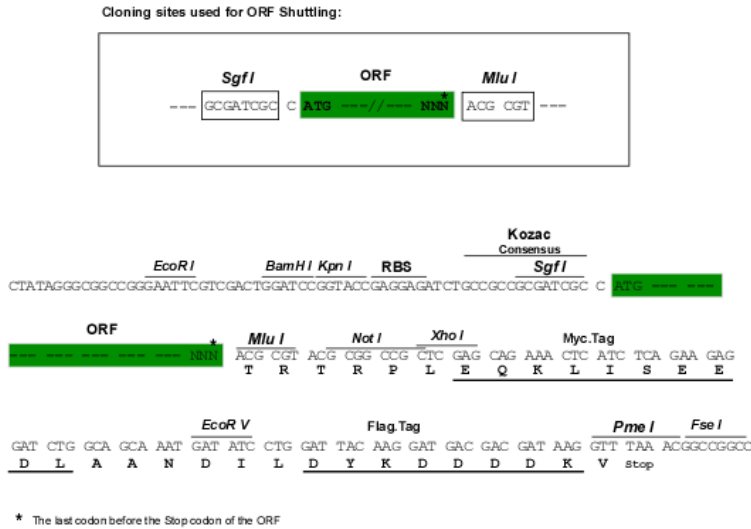
MNPIAMARSRGPIQSSGPTIQDYLNRPRTWEEVKEQLEKKKKGSKALAEFEEMNENWKKLEKHREKL  
 LSGSESSKKRQRKKKEKKKSGRYSSSSSSSSSSSSSSSEDEDKKQGRKKKKNRSHKSSSESSMSET  
 ESDSKDSLKKKKKSKDGTETEKEKDIKGLSKRKMYSDEKPLSSESLSESEYIEEVRAKKKKSSSEEREKATE  
 KTKKKKKHKKHKKKKKKAASSSPDSP

TRTRPLEQKLISEEDLAANDILDYKDDDDKV

**Chromatograms:** [https://cdn.origene.com/chromatograms/mk6333\\_f10.zip](https://cdn.origene.com/chromatograms/mk6333_f10.zip)

**Restriction Sites:** SgfI-MluI

**Cloning Scheme:**



**ACCN:** NM\_152789

**ORF Size:** 711 bp

**OTI Disclaimer:** The molecular sequence of this clone aligns with the gene accession number as a point of reference only. However, individual transcript sequences of the same gene can differ through naturally occurring variations (e.g. polymorphisms), each with its own valid existence. This clone is substantially in agreement with the reference, but a complete review of all prevailing variants is recommended prior to use. [More info](#)

**OTI Annotation:** This clone was engineered to express the complete ORF with an expression tag. Expression varies depending on the nature of the gene.

**Components:** The ORF clone is ion-exchange column purified and shipped in a 2D barcoded Matrix tube containing 10ug of transfection-ready, dried plasmid DNA (reconstitute with 100 ul of water).

**Reconstitution Method:**

1. Centrifuge at 5,000xg for 5min.
2. Carefully open the tube and add 100ul of sterile water to dissolve the DNA.
3. Close the tube and incubate for 10 minutes at room temperature.
4. Briefly vortex the tube and then do a quick spin (less than 5000xg) to concentrate the liquid at the bottom.
5. Store the suspended plasmid at -20°C. The DNA is stable for at least one year from date of shipping when stored at -20°C.

**RefSeq:** [NM\\_152789.1](#), [NP\\_690002.1](#)

**RefSeq Size:** 2371 bp

**RefSeq ORF:** 744 bp

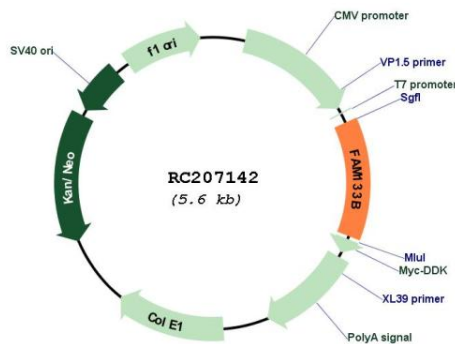
**Locus ID:** 257415

**UniProt ID:** [Q5BKY9](#)

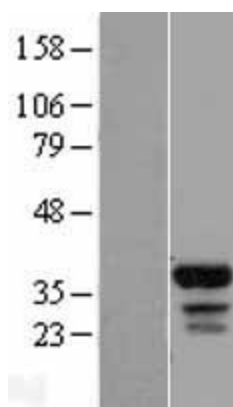
**Cytogenetics:** 7q21.2

**MW:** 27.2 kDa

### Product images:



Circular map for RC207142



Western blot validation of overexpression lysate (Cat# [LY407280]) using anti-DDK antibody (Cat# [TA50011-100]). Left: Cell lysates from untransfected HEK293T cells; Right: Cell lysates from HEK293T cells transfected with RC207142 using transfection reagent MegaTran 2.0 (Cat# [TT210002]).