

Product datasheet for **RC207140**

E74 like factor 1 (ELF1) (NM_172373) Human Tagged ORF Clone

Product data:

Product Type:	Expression Plasmids
Product Name:	E74 like factor 1 (ELF1) (NM_172373) Human Tagged ORF Clone
Tag:	Myc-DDK
Symbol:	E74 like factor 1
Synonyms:	EFTUD1; RIA1
Mammalian Cell Selection:	Neomycin
Vector:	pCMV6-Entry (PS100001)
E. coli Selection:	Kanamycin (25 ug/mL)



[View online »](#)

ORF Nucleotide Sequence:

>RC207140 ORF sequence
 Red=Cloning site Blue=ORF Green=Tags(s)

TTTTGTAATACGACTCACTATAGGGCGGCCGGAATTCGTCGACTGGATCCGGTACCGAGGAGATCTGCC
 GCC**CGGATCGCC**

ATGGCTGCTGTTGTCCAACAGAACGACCTAGTATTTGAATTTGCTAGTAACGTCATGGAGGATGAACGAC
 AGCTTGGTGATCCAGCTATTTTTCTGCCGTAATTGTGGAACATGTTCTGGTGCTGATATTCTCAATAG
 TTATGCCGGTCTAGCCTGTGTGGAAGAGCCCAATGACATGATTACTGAGAGTTCACTGGATGTTGCTGAA
 GAAGAAATCATAGACGATGATGATGACATCACCCCTACAGTTGAAGCTTCTTGTGATGACGGGGATG
 AAACAATTGAAACTATTGAGGCTGCTGAGGCACTCTCAATATGGATTCCCCTGGCCCTATGCTGGATGA
 AAAACGAATAAATAATAATATTTAGTTCACCTGAAGATGACATGGTTGTTGCCCCAGTCACCCATGTG
 TCCGTCACATTAGATGGGATTCTGAAGTGTGGAACACAGCAGGTGCAAGAAAAATATGCAGACTCAC
 CGGGAGCCTCATACCAGAACAGCCTAAGAGGAAAAAGGAAGAAAAACTAAACCACCACGACCAGATTC
 CCCAGCCACTACGCCAAATATATCTGTGAAGAAGAAAACAAAGATGGAAAGGGAACACAATTTATCTT
 TGGGAGTTTTACTGGCACTGCTCCAGGACAAGGCTACTTGTCTAAATACATCAAGTGGACCCAGCGAG
 AGAAAGGCATTTTTAAATTTGGTGGATTCTAAAGCAGTGTCCAGGTTGTGGGGGAAGCACAAAAACAAAC
 TGATATGAATTATGAGACCATGGGAAGGCACTCAGGTAATACCAAAGGGTATTCTGGCAAAAGTG
 GAAGGTCAGCGCTTGGTGTATCAGTTTAAAGAAATGCCAAAAGATCTTATATATAAAATGATGAGGATC
 CAAGTTCAGCATAGAGTCTTCCAGTCCATCACTATCTTCATCAGCCACTTCAAATAGGAATCAAACCAG
 CCGGTCGAGAGTATCTTCAAGTCCAGGGGTAAGGAGGAGCCACTACAGTTCTAAAACCAGGGAATTCT
 AAAGCTGCAAAACCAAGATCCTGTGGAAGTGCACAACCATCAGAAGTTTTGAGGACAGTGCAGCCCA
 GCGAGTCTCCATATCTACCCAGCTCTCCGGACTGTTTCATGTAGTACAGCCAGTACAGGCTGCCAGA
 GGGAGAAGCAGCTAGAACCAGTACCATGCAGGATGAAACATTAATTTCTCCGTTTCCAGGATATTAGGACT
 ATACAGGCTCAAACCAAGTCCAGTGGTGTGTCTCCTAGGAATCAGCAGTGCATACAGTAACACTCC
 AAACAGTGCCACTCACAACAGTTATAGCCAGCACAGATCCATCAGCAGGTAAGTGCATGCTGCAAAAAG
 TTTACAAGCCATTCCATCATCACAGCCATGACAGTACTGAAAGAAAATGTCATGCTGCAGTCAAAAAG
 GCGGGCTCTCCTCCTCAATTGTCTTGGGCCCTGCCAGGTTCAGCAGGTCCTTACTAGCAATGTTCAGA
 CCATTTGCAATGGAACCGTCAGTGTGGCTTCTCTCCATCCTTCCAGTGTACTGCACCTGTGGTACCTT
 TTCTCCTCGAGTTCACAGCTGGTGTCTCACCCACCTGGCACTGTAATCACTTCAAGTATCAAAACTCAA
 GAAACAAAACCTTTACACAGGAAGTAGAGAAAAAGGAATCTGAAGATCATTTGAAAGAGAACACTGAGA
 AAACGGAGCAGCAGCCACAGCCTTATGTGATGGTGTCCAGTTCGAATGGATTTACTTCTCAGGTAGC
 TATGAAACAAAACGAAGTCTGGAACCAACTCTTTT

ACGCGTACGCGGCCGCTCGAGCAGAACTCATCTCAGAAGAGGATCTGGCAGCAATGATATCCTGGATT
 ACAAGGATGACGACGATAAGGTTTAA

Protein Sequence:

>RC207140 protein sequence
 Red=Cloning site Green=Tags(s)

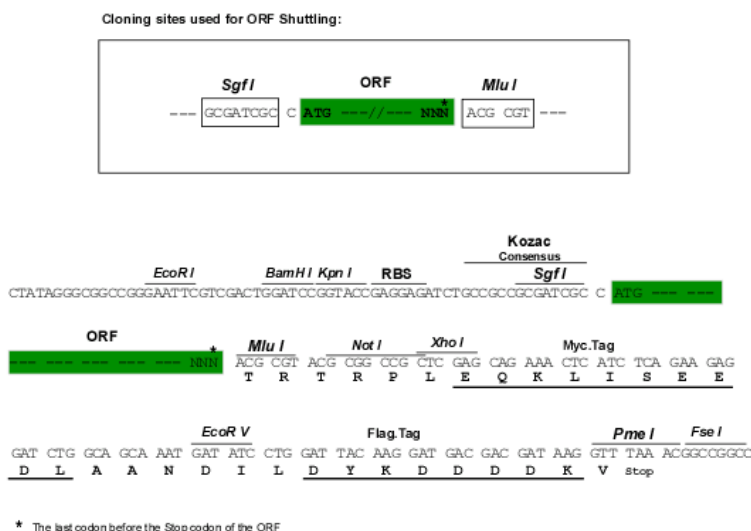
MAAVVQQNDLVFEFASNVMEDERQLGDPAIFPAVIVEHVPADILNSYAGLACVEEPNDMITESSLDVAE
 EEIIDDDDDITLVEASCHDGETIETIEAAEALLNMDSPGPMLDEKRINNNIFSSPEDDMVVAPVTHV
 SVTLDGIPVEMETQQVQEKYADSPGASSPEQPKRKKGRKTKPPRPDSPAATPNISVKKKKNKDGKNTIYL
 WEFLLALLQDKATCPKYIKWTQREKGFKLVDSKAVSRLWGKHKNKPDMMNYETMGRALRYYYQRGILAKV
 EGQRLVYQFKEMPKDLIYINDEDPSSSISSDPSLSSSATSNRNQTSRSRVSSSPGVKGGATTVLKPGNS
 KAAKPKDPVEVAQPSEVLRTVQPTQSPYPTQLFRTVHVVPVQAVPEGEAARTSTMQDETLNSSVQSIRT
 IQAPTQVPVVVSPRNQQLHTVTLQTVPLTTVIASTDPSAGTGSQKFILQAISSQPMTVLKENVMLQSQK
 AGSPPSIVLGAQVQVQLTSNVQITCNGTVSVASSPSFSATAPVVTFSPRSSQLVAHPPGTVITSVIKTK
 ETKTLTQEVEKKESEDHLKENTEKTEQQPQPYVMVSSSNGFTSQVAMQNELLEPNFS

TRTRPLEQKLISEEDLAANDILDYKDDDDKVV

Chromatograms: https://cdn.origene.com/chromatograms/mk6020_a01.zip

Restriction Sites: SgfI-MluI

Cloning Scheme:



ACCN: NM_172373

ORF Size: 1857 bp

OTI Disclaimer: The molecular sequence of this clone aligns with the gene accession number as a point of reference only. However, individual transcript sequences of the same gene can differ through naturally occurring variations (e.g. polymorphisms), each with its own valid existence. This clone is substantially in agreement with the reference, but a complete review of all prevailing variants is recommended prior to use. [More info](#)

OTI Annotation: This clone was engineered to express the complete ORF with an expression tag. Expression varies depending on the nature of the gene.

Components: The ORF clone is ion-exchange column purified and shipped in a 2D barcoded Matrix tube containing 10ug of transfection-ready, dried plasmid DNA (reconstitute with 100 ul of water).

Reconstitution Method:

1. Centrifuge at 5,000xg for 5min.
2. Carefully open the tube and add 100ul of sterile water to dissolve the DNA.
3. Close the tube and incubate for 10 minutes at room temperature.
4. Briefly vortex the tube and then do a quick spin (less than 5000xg) to concentrate the liquid at the bottom.
5. Store the suspended plasmid at -20°C. The DNA is stable for at least one year from date of shipping when stored at -20°C.

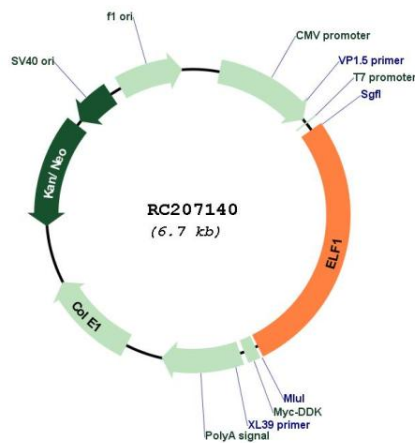
RefSeq: [NM_172373.2](#), [NP_758961.1](#)

RefSeq Size: 3760 bp

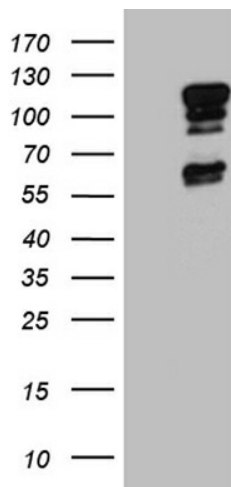
RefSeq ORF: 1860 bp

Locus ID: 1997
UniProt ID: [P32519](#)
Cytogenetics: 13q14.11
Protein Families: Transcription Factors
MW: 67.5 kDa
Gene Summary: This gene encodes an E26 transformation-specific related transcription factor. The encoded protein is primarily expressed in lymphoid cells and acts as both an enhancer and a repressor to regulate transcription of various genes. Alternative splicing results in multiple transcript variants. [provided by RefSeq, Feb 2009]

Product images:



Circular map for RC207140



HEK293T cells were transfected with the pCMV6-ENTRY control (Cat# [PS100001], Left lane) or pCMV6-ENTRY ELF1 (Cat# RC207140, Right lane) cDNA for 48 hrs and lysed. Equivalent amounts of cell lysates (5 ug per lane) were separated by SDS-PAGE and immunoblotted with anti-ELF1 (Cat# [TA811235])(1:2000).