

Product datasheet for **RC207137L3V**

CD300 antigen (CD300A) (NM_007261) Human Tagged ORF Clone Lentiviral Particle

Product data:

Product Type:	Lentiviral Particles
Product Name:	CD300 antigen (CD300A) (NM_007261) Human Tagged ORF Clone Lentiviral Particle
Symbol:	CD300 antigen
Synonyms:	CLM-8; CMRF-35-H9; CMRF-35H; CMRF35-H; CMRF35-H9; CMRF35H; CMRF35H9; IGSF12; IRC1; IRC1/IRC2; IRC2; IRp60
Mammalian Cell Selection:	Puromycin
Vector:	pLenti-C-Myc-DDK-P2A-Puro (PS100092)
Tag:	Myc-DDK
ACCN:	NM_007261
ORF Size:	897 bp
ORF Nucleotide Sequence:	The ORF insert of this clone is exactly the same as(RC207137).
OTI Disclaimer:	The molecular sequence of this clone aligns with the gene accession number as a point of reference only. However, individual transcript sequences of the same gene can differ through naturally occurring variations (e.g. polymorphisms), each with its own valid existence. This clone is substantially in agreement with the reference, but a complete review of all prevailing variants is recommended prior to use. More info
OTI Annotation:	This clone was engineered to express the complete ORF with an expression tag. Expression varies depending on the nature of the gene.
RefSeq:	NM_007261.2
RefSeq Size:	1893 bp
RefSeq ORF:	900 bp
Locus ID:	11314
UniProt ID:	Q9UGN4
Cytogenetics:	17q25.1
Protein Families:	Transmembrane

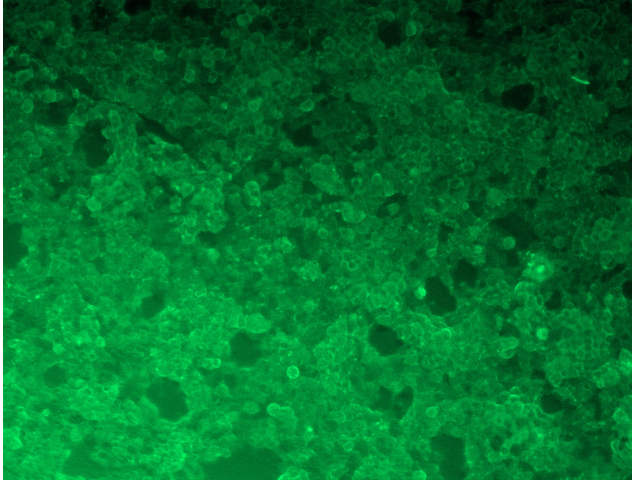


[View online »](#)

MW: 33.2 kDa

Gene Summary: This gene encodes a member of the CD300 glycoprotein family of cell surface proteins found on leukocytes involved in immune response signaling pathways. This gene is located on chromosome 17 in a cluster with all but one of the other family members. Multiple transcript variants encoding different isoforms have been found for this gene. [provided by RefSeq, Feb 2012]

Product images:



[RC207137L3] was used to prepare Lentiviral particles using [TR30037] packaging kit. HEK293T cells were transduced with RC207137L3V particle to overexpress human CD300A-Myc-DDK fusion protein.