

Product datasheet for **RC207137**

CD300 antigen (CD300A) (NM_007261) Human Tagged ORF Clone

Product data:

Product Type:	Expression Plasmids
Product Name:	CD300 antigen (CD300A) (NM_007261) Human Tagged ORF Clone
Tag:	Myc-DDK
Symbol:	CD300 antigen
Synonyms:	CLM-8; CMRF-35-H9; CMRF-35H; CMRF35-H; CMRF35-H9; CMRF35H; CMRF35H9; IGSF12; IRC1; IRC1/IRC2; IRC2; IRp60
Mammalian Cell Selection:	Neomycin
Vector:	pCMV6-Entry (PS100001)
E. coli Selection:	Kanamycin (25 ug/mL)
ORF Nucleotide Sequence:	>RC207137 ORF sequence Red=Cloning site Blue=ORF Green=Tags(s)

TTTTGTAATACGACTCACTATAGGGCGGCCGGAATTCGTCGACTGGATCCGGTACCGAGGAGATCTGCC
GCC**CGATCGCC**

ATGTGGCTGCCTTGGGCTCTGTTGCTTCTCTGGGTCCCAGGATGTTTTGCTCTGAGCAAATGCAGGACCG
TGGCGGGCCCGTGGGGGATCCCTGAGTGTGCAGTGTCCCTATGAGAAGGAACACAGGACCCTCAACAA
ATACTGGTGCAGACCACCACAGATTTTCTATGTGACAAGATTGTGGAGACCAAAGGGTCAGCAGGAAAA
AGGAACGGCCGAGTGTCCATCAGGGACAGTCTGCAAACCTCAGCTTACAGTGACCCTGGAGAATCTCA
CAGAGGAGGATGCAGGCACCTACTGGTGTGGGTGGATACCCATGGCTCCGAGACTTTCATGATCCCGT
TGTCGAGGTTGAGGTGTCCGTGTTCCCGCATCAACGTCAATGACACCTGCAAGTATCACTGCGGCCAAG
ACCTCAACAATCACAACTGCATTTCCACCTGTATCATCCACTACCCTGTTTGCAGTGGGTGCCACCCACA
GTGCCAGCATCCAGGAGGAAACTGAGGAGGTGGTGAACCTCACAGCTCCCGCTGCTCCTCTCCCTGTGGC
ATTGTTGCTGCTTCTGTTGGTGGGGCCTCCCTGCTAGCCTGGAGGATGTTTCAGAAATGGATCAAAGCT
GGTGACCATTCAGAGCTGTCCCAGAACCCCAAGCAGGCTGCCACGCAGAGTGAGCTGCACTACGCAAATC
TGGAGCTGCTGATGTGGCCTCTGCAGGAAAAGCCAGCACCACCAAGGGAGGTGGAGGTGGAATACAGCAC
TGTGGCCTCCCCAGGGAAGAACTTCACTATGCCTCGGTGGTGTGTTGATTCTAACACCAACAGGATAGCT
GCTCAGAGGCTCGGGAGGAGGAACCAGATTACAGTTACAGTGTGATAAGGAAGACA

ACGCGTACGCGGCCGCTCGAGCAGAAACTCATCTCAGAAGAGGATCTGGCAGCAAATGATATCCTGGATT
ACAAGGATGACGACGATAAGGTTTAA



[View online »](#)

Protein Sequence: >RC207137 protein sequence
Red=Cloning site Green=Tags(s)

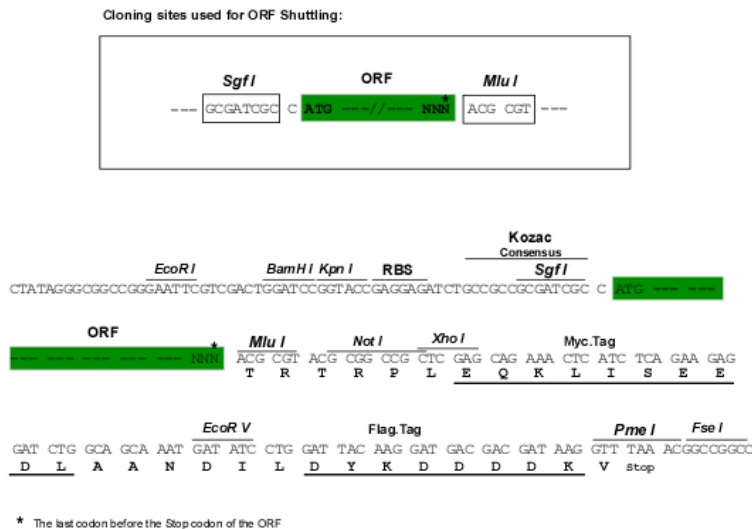
MWLPWALLLLWVPGCFALSKCRTVAGPVGGSLSVQCPYEKEHRTLNKYWCRPPQIFLCDKIVETKGSAGK
 RNGRVSIRDSPANLSFTVTLENLTEEDAGTYWCGVDTPLWRDFHDPVVEVEVSVPASTSMTPASITAAK
 TSTITTAFFPPVSSTTLFAVGATHSASIQEETEVEVNSQLPLLLSLLALLLLLLLVGASLLAWRMFQKWIKA
 GDHSELSQNPKQAATQSELHYANLELLMWPLQEKAPPREVEVEYSTVASPREELHYASVVFDSNTNRIA
 AQRPREEEPDSYSVIRKT

TRTRPLEQKLISEEDLAANDILDYKDDDDKV

Chromatograms: https://cdn.origene.com/chromatograms/mk6334_f04.zip

Restriction Sites: SgfI-MluI

Cloning Scheme:



ACCN: NM_007261

ORF Size: 897 bp

OTI Disclaimer: The molecular sequence of this clone aligns with the gene accession number as a point of reference only. However, individual transcript sequences of the same gene can differ through naturally occurring variations (e.g. polymorphisms), each with its own valid existence. This clone is substantially in agreement with the reference, but a complete review of all prevailing variants is recommended prior to use. [More info](#)

OTI Annotation: This clone was engineered to express the complete ORF with an expression tag. Expression varies depending on the nature of the gene.

Components: The ORF clone is ion-exchange column purified and shipped in a 2D barcoded Matrix tube containing 10ug of transfection-ready, dried plasmid DNA (reconstitute with 100 ul of water).

Reconstitution Method:

1. Centrifuge at 5,000xg for 5min.
2. Carefully open the tube and add 100ul of sterile water to dissolve the DNA.
3. Close the tube and incubate for 10 minutes at room temperature.
4. Briefly vortex the tube and then do a quick spin (less than 5000xg) to concentrate the liquid at the bottom.
5. Store the suspended plasmid at -20°C. The DNA is stable for at least one year from date of shipping when stored at -20°C.

RefSeq: [NM_007261.4](#)

RefSeq Size: 1893 bp

RefSeq ORF: 900 bp

Locus ID: 11314

UniProt ID: [Q9UGN4](#)

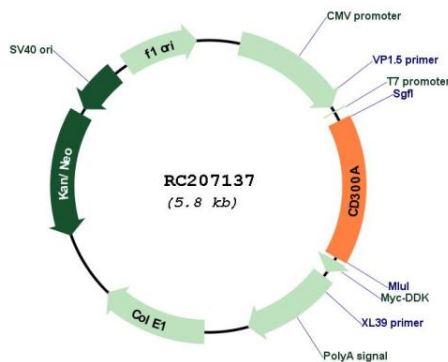
Cytogenetics: 17q25.1

Protein Families: Transmembrane

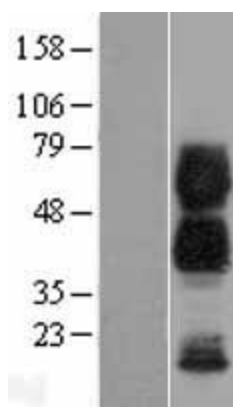
MW: 33.2 kDa

Gene Summary: This gene encodes a member of the CD300 glycoprotein family of cell surface proteins found on leukocytes involved in immune response signaling pathways. This gene is located on chromosome 17 in a cluster with all but one of the other family members. Multiple transcript variants encoding different isoforms have been found for this gene. [provided by RefSeq, Feb 2012]

Product images:



Circular map for RC207137



Western blot validation of overexpression lysate (Cat# [LY416099]) using anti-DDK antibody (Cat# [TA50011-100]). Left: Cell lysates from untransfected HEK293T cells; Right: Cell lysates from HEK293T cells transfected with RC207137 using transfection reagent MegaTran 2.0 (Cat# [TT210002]).