

Product datasheet for **RC207134**

FAM89B (NM_152832) Human Tagged ORF Clone

Product data:

Product Type: Expression Plasmids
Product Name: FAM89B (NM_152832) Human Tagged ORF Clone
Tag: Myc-DDK
Symbol: FAM89B
Synonyms: LRAP25; MTRV; MTRV1
Mammalian Cell Selection: Neomycin
Vector: pCMV6-Entry (PS100001)
E. coli Selection: Kanamycin (25 ug/mL)
ORF Nucleotide Sequence: >RC207134 ORF sequence
Red=Cloning site Blue=ORF Green=Tags(s)

TTTTGTAATACGACTCACTATAGGGCGCCGGGAATTCGTCGACTGGATCCGGTACCGAGGAGATCTGCC
GCC**CGGATCGCC**

ATGAACGGGCTGCCCTCGGCAGAGGCGCCGGGGCGGGGCTGCGCTTTGGCCGGGCTCCACCGCTGC
CGCGCGGCTCAGCGGCCTCCTTAATGCGAGCGGGGGCTCGTGGCGGGAGCTGGAGCGCTACAGCCA
GCGCAGCCGCATCCACGACGAGCTGAGCCGCGCCCGCCCGCCCGGACGGGCCCCGCCACGCCCGGC
GCCGCCAACGCGGGACCCGACCGCCCGCGTCTGTCAACCTCGACTCAGCGCTGGCCGCGCTGC
GCAAGGAGATGCTGTGGGCCTGTACGAGTCAATCCAGGACTACAAACACCTGTGCCAAGACCTGAGCTT
CTGCCAGGACCTGCATCCTCCCTCCATTTCGGACAGCTCCTACCCACCGGATGCGGGCCTGTCTGACGAC
GAGGAGCCTCCCGATGCCAGCCTGCCTCCTGACCCGCCACCCCTTACTGTGCCCCAGACGACAATGCC
GTGACCAAGTGGCTGCAGGATGCCTTCCACATCAGCCTC

ACGCGTACGCGGCCGCTCGAGCAGAACTCATCTCAGAAGAGGATCTGGCAGCAAATGATATCCTGGATT
ACAAGGATGACGACGATAAGGTTTAA

Protein Sequence: >RC207134 protein sequence
Red=Cloning site Green=Tags(s)

MNGLPSAEAPGGAGCALAGLPPLPRGLSGLLNASGGSWRELERYVSRSRIHDEL SRAARAPDGRPHAAG
AANAGPAAGPRRPVNLDSALAALRKEMLWGLYESIQDYKHL CQDLSFCQDLSSSLHSDSSYPDAGLSDD
EPPDASLPPDPPLTVPQTHNARDQWLQDAFHISL

TRTRPLEQKLISEEDLAANDILDYKDDDDKV

Chromatograms: https://cdn.origene.com/chromatograms/mk6802_d03.zip



Restriction Sites: SgfI-MluI

Cloning Scheme:



ACCN: NM_152832

ORF Size: 528 bp

OTI Disclaimer: The molecular sequence of this clone aligns with the gene accession number as a point of reference only. However, individual transcript sequences of the same gene can differ through naturally occurring variations (e.g. polymorphisms), each with its own valid existence. This clone is substantially in agreement with the reference, but a complete review of all prevailing variants is recommended prior to use. [More info](#)

OTI Annotation: This clone was engineered to express the complete ORF with an expression tag. Expression varies depending on the nature of the gene.

Components: The ORF clone is ion-exchange column purified and shipped in a 2D barcoded Matrix tube containing 10ug of transfection-ready, dried plasmid DNA (reconstitute with 100 ul of water).

Reconstitution Method:

1. Centrifuge at 5,000xg for 5min.
2. Carefully open the tube and add 100ul of sterile water to dissolve the DNA.
3. Close the tube and incubate for 10 minutes at room temperature.
4. Briefly vortex the tube and then do a quick spin (less than 5000xg) to concentrate the liquid at the bottom.
5. Store the suspended plasmid at -20°C. The DNA is stable for at least one year from date of shipping when stored at -20°C.

RefSeq: [NM_152832.3](#)

RefSeq Size: 1428 bp

RefSeq ORF: 531 bp

Locus ID: 23625

UniProt ID: [Q8N5H3](#)

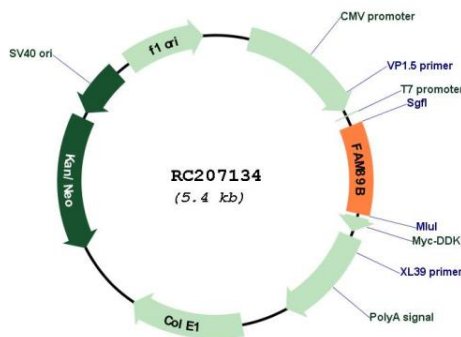
Cytogenetics: 11q13.1

Protein Families: Druggable Genome

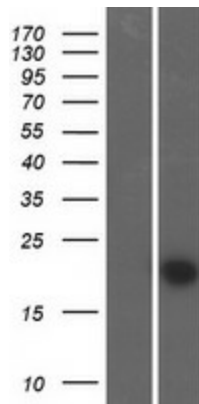
MW: 18.7 kDa

Gene Summary: Negatively regulates TGF-beta-induced signaling; in cooperation with SKI prevents the translocation of SMAD2 from the nucleus to the cytoplasm in response to TGF-beta. Acts as an adapter that mediates the specific recognition of LIMK1 by CDC42BPA and CDC42BPB in the lamellipodia. LRAP25-mediated CDC42BPA/CDC42BPB targeting to LIMK1 and the lamellipodium results in LIMK1 activation and the subsequent phosphorylation of CFL1 which is important for lamellipodial F-actin regulation.[UniProtKB/Swiss-Prot Function]

Product images:



Circular map for RC207134



Western blot validation of overexpression lysate (Cat# [LY407290]) using anti-DDK antibody (Cat# [TA50011-100]). Left: Cell lysates from untransfected HEK293T cells; Right: Cell lysates from HEK293T cells transfected with RC207134 using transfection reagent MegaTran 2.0 (Cat# [TT210002]).