

Product datasheet for **RC207132**

SYVN1 (NM_032431) Human Tagged ORF Clone

Product data:

Product Type:	Expression Plasmids
Product Name:	SYVN1 (NM_032431) Human Tagged ORF Clone
Tag:	Myc-DDK
Symbol:	SYVN1
Synonyms:	DER3; HRD1
Mammalian Cell Selection:	Neomycin
Vector:	pCMV6-Entry (PS100001)
E. coli Selection:	Kanamycin (25 ug/mL)



[View online »](#)

ORF Nucleotide
Sequence:

>RC207132 representing NM_032431
Red=Cloning site Blue=ORF Green=Tags(s)

TTTTGTAATACGACTCACTATAGGGCGGCCGGGAATTCGTGCGACTGGATCCGGTACCGAGGAGATCTGCC
GCC**CGGATCGCC**

ATGTTCCGCACGGCAGTGATGATGGCGCCAGCCTGGCGTGACCGGGGCTGTGGTGGCTCACGCCTACT
ACCTCAAACACCAGTTCTACCCACTGTGGTGTACCTGACCAAGTCCAGCCCCAGCATGGCAGTCCGTGTA
CATCCAGGCCTTTGTCCCTGTCTTCTTCTGGGCAAGGTGATGGGCAAGGTGTTCTTTGGCAACTGAGG
GCAGCAGAGATGGAGCACCTTCTGGAACGTTCTGGTACGCCGTCACAGAGACTTGCTGGCCTTACC
TTTTTCGGGATGACTTCAGCCCCGCTTTGTTGCACTTCTCACTTCTTCTCTCTCCTCAAAATGTTTCCA
CTGGCTGGCTGAGGACCCTGTGGACTTTATGGAACGCAGCCCCAACATCTCTGGCTCTTCTACTGCCGC
ATTGTCTCTCTTATGTTCTCTGGGCATCCTGGACTTCTTCTCGTACGCCAGCCTATCACAGCATCC
TGACCCGTGGGGCTCTGTGCAGCTGGTGTGGCTTTGAGTATGCCATCCTGATGACGATGGTGTCTCAC
CATCTTCAATCAAGTATGTGCTGCACTCCGTGGACTCCAGAGTGAGAACCCTGGGACAACAAGGCTGTG
TACATGCTCTACACAGAGCTGTTTACAGGCTTCACTAAGTTCTGCTGTACATGGCTTCACTGACCATCA
TGATCAAGGTGCACACCTTCCCCTCTTTGCCATCCGGGCCATGTACCTGGCCATGAGACAGTTCAAGAA
AGCTGTGACAGATGCCATCATGTCTCGCCGAGCCATCCGCAACATGAACACCCTGTATCCAGATGCCACC
CCAGAGGAGCTCCAGGCAATGGACAATGTCTGCATCATCTGCCGAGAAGAGATGGTGACTGGTGCCAAGA
GACTGCCCTGCAACCACATTTCCATACCAGCTGCCTGCCTCCTGGTTCCAGCGGCAGCAGACCTGCC
CACCTGCCGTATGGATGTCTCGTGCATCGCTGCCAGCGCAGTACCACCACCCCCGAGCCTGCGGAT
CAGGGGCCACCCCTGCCCCCCACCCACCACCTTTCCTCAGCCCCCAACTTCCCCAGGGCCTCC
TGCCTCTTTTCTCCAGGCATGTCCCCTGTGGCCCCCATGGCCCCCTTTCCACTGTCCCGCTCC
CCCCAGCTCAGGAGAGGCTGTGGCTCCTCCATCCACCAGTGCAGCAGCCCTTTCTCGGCCAGTGGAGCA
GCTACAACCACAGCTGCTGGCACCAAGTGTACTGCTGCTTCTGCCACAGCATCTGGCCAGGCTCTGGCT
CTGCCCCAGAGGCTGGCCCTGCCCTGGTTTCCCTTCCCTCCTCCCTGGATGGGTATGCCCTGCCTCC
ACCCTTTGCCTTCCCCCAATGCCTGTGCCCTCGCGGCTTTGCTGGGCTGACCCAGAGGAGCTACGA
GCTCTGGAGGGCCATGAGCGGCAGCACCTGGAGGCCGCGCTGCAGAGCCTGCGTAACTCCACACTGC
TGGACGCCGATGCTGCAGATCAACCAGTACCTACCGTGTGGCTCCTTGGGCCCCCCCCGGCCTGC
CACTTCACTCACTGAGGACTGCCACTACAGTGTGGTGTGCTGCCTCTCCACAGCATCCT
AGCTCAGAGGCCAGACCCAACCCAGGAGCCTCCCCACAGCCCTGAAATGGAAAGGCTCCAGCTC
CTGAGTACAGTGGGCACAGAGGAGATGCCTGAGGATGGAGAGCCGATGCAGCAGAGCTCCGCCGGC
CCTGCAGAAGCTGGAGTCTCTGTGCCAC

ACGCGTACGCGGCCGCTCGAGCAGAACTCATCTCAGAAGAGGATCTGGCAGCAAATGATATCCTGGATT
ACAAGGATGACGACGATAAGGTTAA

Protein Sequence:

>RC207132 representing NM_032431
Red=Cloning site Green=Tags(s)

MFRTAVMMAASLALTGAVVAHAYLKHQFYPTVVYLTKSSPSMAVLYIQAFVLVFLLGKVMGKVFVFGQLR
AAEMEHLERSWYAVTETCLAFTVFRDDFSRPFVALFTLLFLKCFHWLAEDRVDFMERSPNI SWLFHCR
IVSLMFLLGILDFLVSHAYHSILTRGASVQLVGFYAILMTMVL TIF IKYVLSVDLQSENPDNKA
YMLYTELFTGFIKVLLYMAFMTIMIKVHTFPLFAIRPMYLAMRQFKKAVTDAIMSRRAIRNMNTLYPDAT
PEELQAMDNVCII CREEMVTGAKRLPCNHIFHTSCLRSWFQRQTCPTCRMDVLRASLPAQSPPPPPAD
QGPPAPHPPLLPPPNFPQGLLPPFPFGMPLWPPMGPFPVPPPPSSGEAVAPPSTSAALSRPSGA
ATTTAAGTSATAASATASGPGSGSAPEAGPAGFPFPMPMPLPPFAFPMPVPPAGFAGLTPPELR
ALEGHERQHLEARLQSLRNIHTLLDAAMLQINQYLTVLASLGPPRPATSVNSTEETATTVVAAAASSTSIP
SSEATTPTPGASPPAPEMERPPAPESVGTTEMPEDGEPDAAELRRRRLQKLESPVAH

TRTRPLEQKLI SEEDLAANDILDYKDDDDKV

Restriction Sites: SgfI-MluI

Cloning Scheme:



ACCN: NM_032431

ORF Size: 1851 bp

OTI Disclaimer: The molecular sequence of this clone aligns with the gene accession number as a point of reference only. However, individual transcript sequences of the same gene can differ through naturally occurring variations (e.g. polymorphisms), each with its own valid existence. This clone is substantially in agreement with the reference, but a complete review of all prevailing variants is recommended prior to use. [More info](#)

OTI Annotation: This clone was engineered to express the complete ORF with an expression tag. Expression varies depending on the nature of the gene.

Components: The ORF clone is ion-exchange column purified and shipped in a 2D barcoded Matrix tube containing 10ug of transfection-ready, dried plasmid DNA (reconstitute with 100 ul of water).

Reconstitution Method:

1. Centrifuge at 5,000xg for 5min.
2. Carefully open the tube and add 100ul of sterile water to dissolve the DNA.
3. Close the tube and incubate for 10 minutes at room temperature.
4. Briefly vortex the tube and then do a quick spin (less than 5000xg) to concentrate the liquid at the bottom.
5. Store the suspended plasmid at -20°C. The DNA is stable for at least one year from date of shipping when stored at -20°C.

RefSeq: [NM_032431.3](#)

RefSeq Size: 3071 bp

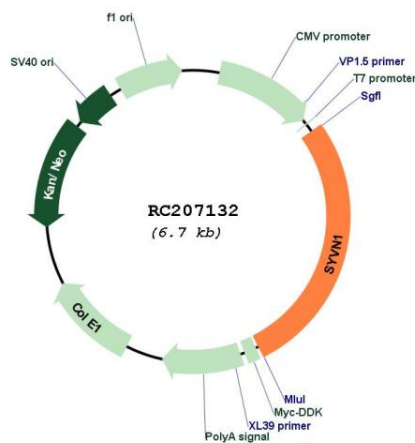
RefSeq ORF: 1851 bp

Locus ID: 84447

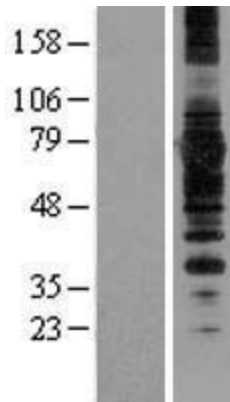
UniProt ID: [Q86TM6](#)

Cytogenetics: 11q13.1
Protein Families: Druggable Genome, Transmembrane
Protein Pathways: Ubiquitin mediated proteolysis
MW: 67.4 kDa
Gene Summary: This gene encodes a protein involved in endoplasmic reticulum (ER)-associated degradation. The encoded protein removes unfolded proteins, accumulated during ER stress, by retrograde transport to the cytosol from the ER. This protein also uses the ubiquitin-proteasome system for additional degradation of unfolded proteins. Sequence analysis identified two transcript variants that encode different isoforms. [provided by RefSeq, May 2011]

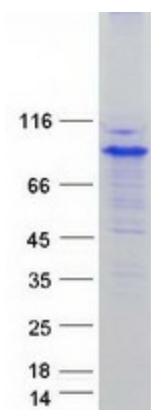
Product images:



Circular map for RC207132



Western blot validation of overexpression lysate (Cat# [LY410125]) using anti-DDK antibody (Cat# [TA50011-100]). Left: Cell lysates from untransfected HEK293T cells; Right: Cell lysates from HEK293T cells transfected with RC207132 using transfection reagent MegaTran 2.0 (Cat# [TT210002]).



Coomassie blue staining of purified SYVN1 protein (Cat# [TP307132]). The protein was produced from HEK293T cells transfected with SYVN1 cDNA clone (Cat# RC207132) using MegaTran 2.0 (Cat# [TT210002]).