

Product datasheet for **RC207129**

TCP11L2 (NM_152772) Human Tagged ORF Clone

Product data:

Product Type:	Expression Plasmids
Product Name:	TCP11L2 (NM_152772) Human Tagged ORF Clone
Tag:	Myc-DDK
Symbol:	TCP11L2
Mammalian Cell Selection:	Neomycin
Vector:	pCMV6-Entry (PS100001)
E. coli Selection:	Kanamycin (25 ug/mL)



[View online »](#)

ORF Nucleotide Sequence:

>RC207129 ORF sequence
 Red=Cloning site Blue=ORF Green=Tags(s)

TTTTGTAATACGACTCACTATAGGGCGGCCGGAATTCGTCGACTGGATCCGGTACCGAGGAGATCTGCC
 GCC**GCGATCGCC**

ATGCCCTTCAATGGCGAGAAGCAGTGTGTGGGAGAGGACCAGCCAAGCGATTCTGATTCTCCCGGTTTT
 CCGAAAGCATGGCTTCGCTCAGTACTATGAATGCTCCAGGCAGAGCTTTGCAAGTACTCTCCAGCAA
 ATCCAGCTCTCCTGCTTCAACAAGCCCTCCAAGGGTTGTAACATTTGATGAAGTATGGCTACAGCAAGG
 AACTTATCAAACCTGACTCTTGCTCATGAGATTGCTGTAATGAGAACTTTCAATTGAAACAAGAGGCTC
 TCCAGAAAAGAGTTGGCTGGTCGAGTGAAGCACATTGTTACCAGGCCTTCTGGGACGCTTGGATTC
 AGAACTAAATGCTGACCCTCCTGAGTTTGAACATGCCATCAAACGTTTGAAGAAATCAGAGAGATTCTT
 CTCTCTTTTCTCACTCCCGGTGGCAACCGCTTCGCAACCAAATCTGTGAAGTTTGGACACAGACCTCA
 TTAGGCAGCAGGCTGAGCACAGTGTGTTGACATCCAAGGCCTGGCCAATATGTCATCAGTACGATGGG
 AAAGCTGTGTGCTCCCGTGCAGATAATGATATCAGAGAGTTAAAGGCTACTGGCAACATCGTGGAGGTG
 CTGAGACAAAATTTCCATGTCCTGGACCTCATGCAAAATGGACATGGCCAATTTTACAATTATGAGTCTCA
 GACCGCACCTTCAACGCCAGTTGGTGAATATGAGAGAACCAAGTTCCAGGAAATTTTGGAGAACTCC
 AAGTGCTTTGATCAGACTACAGAAATGGATAAAAGAATCTGTAATGAAGAATTATTTCTTTTCTGAG
 AGTGCTTAACTCCTGGGGCCGAAAATACCTCCAAGCCAAGCCTGAGCCCTACTTTGGTGCTAAATAATA
 GTTACTTGAAACTGTTACAGTGGGATTATCAGAAAAAGAATTACCAGAGACACTTATGACAGATGGAGC
 ACGTCTTCAGGAATAACAGAAAAGCTGAATCAATTGAAAATTATTGCCTGCCTGCCTAATTACCAAC
 AACATGGTGGGTGCTATTACAGGAGGCCTGCCTGAGCTTGCAAGCAGGTTAACAAGGATTCAGCTGTTG
 TACTTGAAGGCATGAACAAAGAGACCTTAACTTGAAGGAAGTCTGAATTCTATTGGTATTGAGCTGTTG
 TGTTGAGTTAACAAGCCCTGATGAAAAGAGTTTACCACCTTAAATGCTGAGATTCAAGCTAATCTT
 ATAGGTCAATTTTCAAGCATTGAAGAGGAGACAATCCTATCTGGTCTTGATTGATAAACGAATTAAGC
 TTTACATGAGAAGGCTACTTTGTCTTCCAAGCCCTCAAAAATGCATGCCTCCTATGCCAGGAGGCCTAGC
 TGTCATTACAGCAGGAGCTAGAAGCCCTAGGCTCTCAATATGCAAACATTGTGAATCTCAACAAACAAGTG
 TATGGACCATTTATGCAAAATATACTTCGAAAGCTGCTCTTCAATGAGGAAGCCATGGGGAAGGTAGATG
 CTTACCTCTACTAAC

ACGCGTACGCGGCCGCTCGAGCAGAACTCATCTCAGAAGAGGATCTGGCAGCAAATGATATCCTGGATT
 ACAAGGATGACGACGATAAGGTTTAA

Protein Sequence:

>RC207129 protein sequence
 Red=Cloning site Green=Tags(s)

MPFNGEKQCVGEDQPSDSRSESMASLSDYECSRQSFASDSSSKSSSPASTSPPRVVFDEVMATAR
 NLSNLTLAHEIAVNENFQLKQALPEKSLAGRVKHIVHQAFWDVLDSELNADPPEFEHAIKLFEEIREIL
 LSFLTPGGNRLRNQICEVLDLDIRQQAESAVDIQGLANYVISTMGKLCAPVRDNDIRELKATGNIVEV
 LRQIFHVLDMQMDMANFTIMSLRPHLQRQLVEYERTKQEILEETPSALDQTTEWIKESVNEELFSLSE
 SALTPGAENTSKPSLSPTLVLNNSYLKLLQWDYQKKELPETLMTD GARLQELTEKLNQLKIIACL SLITN
 NMVGAITGGLPELASRLTRISAVLLEGMNKETFNLKEVLNSIGIQTCEVNKTLMERGLPTLNAEIQANL
 IGQFSSIEEEDNPIWSLIDKRIKLYMRRLLCLPSPQKCMPPMPGGLAVIQQELEALGSQYANIVNLNKQV
 YGPFYANILRKLLFNEEAMGKVDASPTN

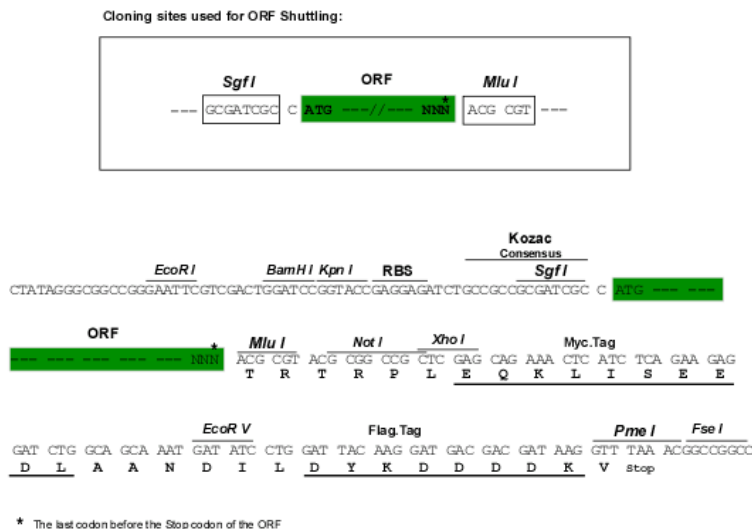
TRTRPLEQKLISEEDLAANDILDYKDDDDKV

Chromatograms:

https://cdn.origene.com/chromatograms/mk6334_h05.zip

Restriction Sites:

SgfI-MluI

Cloning Scheme:

ACCN: NM_152772

ORF Size: 1557 bp

OTI Disclaimer: The molecular sequence of this clone aligns with the gene accession number as a point of reference only. However, individual transcript sequences of the same gene can differ through naturally occurring variations (e.g. polymorphisms), each with its own valid existence. This clone is substantially in agreement with the reference, but a complete review of all prevailing variants is recommended prior to use. [More info](#)

OTI Annotation: This clone was engineered to express the complete ORF with an expression tag. Expression varies depending on the nature of the gene.

Components: The ORF clone is ion-exchange column purified and shipped in a 2D barcoded Matrix tube containing 10ug of transfection-ready, dried plasmid DNA (reconstitute with 100 ul of water).

- Reconstitution Method:**
1. Centrifuge at 5,000xg for 5min.
 2. Carefully open the tube and add 100ul of sterile water to dissolve the DNA.
 3. Close the tube and incubate for 10 minutes at room temperature.
 4. Briefly vortex the tube and then do a quick spin (less than 5000xg) to concentrate the liquid at the bottom.
 5. Store the suspended plasmid at -20°C. The DNA is stable for at least one year from date of shipping when stored at -20°C.

RefSeq: [NM_152772.3](#)
RefSeq Size: 2255 bp

RefSeq ORF: 1560 bp

Locus ID: 255394

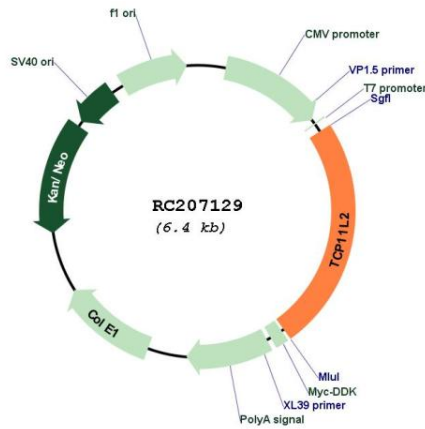
UniProt ID: [Q8N4U5](#)

Cytogenetics: 12q23.3

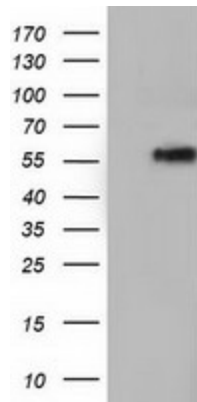
Protein Families: Druggable Genome

MW: 58.1 kDa

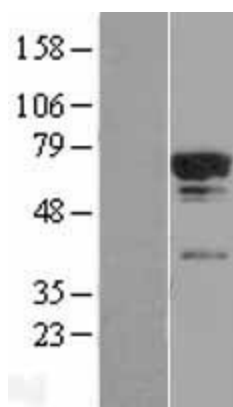
Product images:



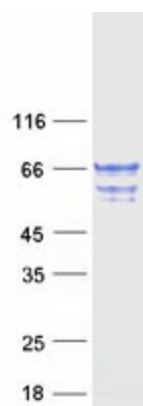
Circular map for RC207129



HEK293T cells were transfected with the pCMV6-ENTRY control (Cat# [PS100001], Left lane) or pCMV6-ENTRY TCP11L2 (Cat# RC207129, Right lane) cDNA for 48 hrs and lysed. Equivalent amounts of cell lysates (5 ug per lane) were separated by SDS-PAGE and immunoblotted with anti-TCP11L2 (Cat# [TA501802]). Positive lysates [LY407320] (100ug) and [LC407320] (20ug) can be purchased separately from OriGene.



Western blot validation of overexpression lysate (Cat# [LY407320]) using anti-DDK antibody (Cat# [TA50011-100]). Left: Cell lysates from untransfected HEK293T cells; Right: Cell lysates from HEK293T cells transfected with RC207129 using transfection reagent MegaTran 2.0 (Cat# [TT210002]).



Coomassie blue staining of purified TCP11L2 protein (Cat# [TP307129]). The protein was produced from HEK293T cells transfected with TCP11L2 cDNA clone (Cat# RC207129) using MegaTran 2.0 (Cat# [TT210002]).