

Product datasheet for RC207127

ZNF687 (NM_020832) Human Tagged ORF Clone

Product data:

Product Type:	Expression Plasmids
Product Name:	ZNF687 (NM_020832) Human Tagged ORF Clone
Tag:	Myc-DDK
Symbol:	ZNF687
Synonyms:	PDB6
Mammalian Cell Selection:	Neomycin
Vector:	pCMV6-Entry (PS100001)
E. coli Selection:	Kanamycin (25 ug/mL)
ORF Nucleotide Sequence:	>RC207127 representing NM_020832 Red=Cloning site Blue=ORF Green=Tags(s)

TTTTGTAATACGACTCACTATAGGGCGGCCGGAATTCGTCGACTGGATCCGGTACCGAGGAGATCTGCC
GCCCGATCGCC

ATGGGGGATGAAGACCCCTGATTTTGTGACCTCCTTGCTGCCTTTGACATCCCTGACATTGATGCGA
ATGAAGCCATCCATTCTGGGCCAGAAGAAAATGAGGGCCTGGAGGCCAGGGAAGCCAGAACCAGGTGT
AGGAAGTGAATCTGAAGACACAGCAGCAGCCTCTGCTGGGGATGGCCCTGGAGTCCAGCCAGGCCTCT
GACCATGGCCTGCCACCGCCAGACATTTCTGTAGTCAGTGTATTGTCAAGAACACTGTGTGCCGAGC
AGTCTGAGGCCCTGGCTGGAGGCTCAGCAGGAGACGGGGCCAGGCTGCTGGGGTAACTAAGAAGGCC
TGTGGGGCCTCATCGAATGCAGAATGGTTTTGGGAGCCCTGAACCTTCCCTCCAGGAACCTCCACTCT
CCTGCTCCTCCAGTGGGGCACCTGGAAGAAAAGGCATGGAAGGCAAACTCCCTTGGACCTGTTTG
CTCATTTTGGCCCTGAGCCAGGGGACCCTCAGATCCGCTGCCTCCCTCTGCACCCTCTCCCACTCGGGA
GGGGGCTCTGACCCCGCCTCCTTTCCCTCTTCTTTGAGCTGGCCAGGAGAATGGCCAGGCATGCAG
CCACCTGTTTCTTCCCAACATTGGGGCCTTGAAGCAGGAGAGCTGCAGCCCCATCATCCCAAGTCC
TAGCCCAACAAGGCTCAGGCTCCAGCCCTAAGGCCACGGACATCCCTGCCAGTGCCTCGCCTCCCCAGT
TGCTGGGGTGCCTTCTCAAGCAGTCTCAGGGCACCAGAGCCCTTTGCCTCCCCAAAGTGCCCGTC
TGTCAGCCCTTGAAGGAAGAAGATGATGATGAGGGGCCAGTGGACAAGTCTTCCCAAGGAAGTCCCA
GTCCCTCTAGTGGGGCCGAGGCTGCAGATGAGGACAGCAATGACTCCCTGCCTCCAGTCTCTAGGCC
TCTTAAGTGCAGATCAAGACCATTAAAACATCCTGCGGGAATATCACAAGGACTGTAACCTCAGTCCCC
TCAGATCCTGATCCACTGCCCCCTTGGCTGAGGGGCCCTTCTTGGCTGAGGCTAGCCTCTTGAAGTGT
CCCCTGCAACACCTACTTCTGAGGGTCCAAAGTGGTGGAGCTACAGTTGGGTGATGGTACAAGGCTGAA
AGGCACTGTGCTGCCTGTGGCCACCATCCAGAACGCCAGTACTGCCATGCTGATGCCAGCCAGTGTGGCT
CGCAAGGCTGTGGTGTGCTGCTGGGGGACTGCCACCAGCCCTAAGATGATTGCTAAGAACGTGCTAGGCC
TGGTGCCCAAGCCCTGCCTAAGGCTGACGGGCGGCAGGGCTGGGGACTGGGGACAGAAGGTGAATGG
TGCTCGTGGTGGTGAACCTTCAAAGACAGCTACTGGCCAAGTACAGGGGGCGGCACAGTGATA



[View online »](#)

TACGGACCCAGTCCAGCCTGGTGGAGGCTTCAACAAGATCCTCAACAGCAAGAACCTGCTCCCTGCCT
ATAGGCCAAACCTGAGCCACCAGCTGAGGCTGGGCTGGCCCTGCCTCCCACCGCTACCCTGCCTGGA
GTGTGGGGATGCCTTCTCATTGGAGAAGAGCCTGGCACGGCACTATGACCGTCGGAGCATGCGCATCGAG
GTCACCTGCAACCACTGCGCCCGCCGCTGGTCTTCTTCAACAAGTGCAGCCTGCTCCTGCATGCACGTG
AACACAAGGACAAGGGCTCGTCATGCAGTGTCAATTTGGTCATGAGGCCTGTAGCCCTTGACCAGAT
GGTGGGGCAGCCGGACATCACACCGTGTGCTGTAGCTGTCCCACCTGTCTGAGCCTGTGGCCCTG
CCTGCCCTCTCCACAGAGCCGCTGCTGCCCGGCCACCTCTGCTTACACATGCTTTCGCTGCCTGGA
GTGCAAGGAACAGTGCCGGGACAAGGCTGGCATGGCAGCTCACTTCCAGCAGCTCGGCCCCCTGCCCT
GGGGCCACCAGCAATGTGTGCCAACCTGCCCCATGATGCTCCCCAATCGCTGCAGCTTACAGCGCCACC
AGCGCATGCATAAGAATCGACCCCCCATGTCTGTCTGAGTGTGGGGCAACTTCTGCAAGCCAAATTT
TCAGACCCATCTCCGGGAGGCTGTCTGCACGTCTCTCGCCGTGTAGGATACAGGTGCCCCAGCTGTTCA
GTGGTGTGGGGGTGTGAACCTCAAGTCCCACATCCAGACGTCGCACTGCGAGGTTTTCCACAAGT
GCCCATCTGCCCATGGCTTCAAGTCTGGGCAAGTGCCATGCCACCTTACTCCCAGCATCCAG
CTTCAAACCTCAGCAGGCAAGTGTATCTACAAGTGCCTCATGTGCGACACAGTCTTCACTCACAACCC
CTCCTCTCCTCACAACCTGACCAGCACTTGTGCCCCAGCGTGTAGTGTCTTAAAGTGCCCGTCTGTGTC
CTCTGCTCTTTGCCAAAAAAGGACCATGCTGGAACATCTCAAGAACACCCATCAGTCTGGGCGCTTGA
GGAGACTGCTGGGAAAGGGGCGGGGTGCCCTGCTGACCCCAAGACTGAGCCTGAGGAGCTGGCTGTT
TCTCAGGGAGGGGCGCCCTGCTACTGAGGAGTCGTCTTTCATCTTTCAGAAGAGGAGGAAGTACCAGCT
CCCCTGAGCCCCCGTCCAGCCAAACGGCTCGGCGGGAAGTGGGAGCAAAGGCTCAAGGTTGGGGG
TGGGGGCGCTGGAGGCTGGACCTGTGGCCTGTGTCACTCCTGGTCCCTGAGCGTGATGAATACGTGGCC
CACATGAAGAAGGAGCATGGCAAGTCAAGTAAATCACGAGGGCATCAAGCGAGTTTACCCCTGCAGGTA
CCGCCCCAGCTGAGGCGCCATGTCAAGTAAATCACGAGGGCATCAAGCGAGTTTACCCCTGCAGGTA
TTGCACAGAGGGAAAACGCACCTTCAGCAGCCGCTGATCCTAGAGAAAACATGTCCAGGTCGGCACGGC
TTCAGACTTGGGGCCAGTCCCCTGGCCGGGGACCACCTTGGCTCGGGTTCCAGTGCCAGAGCCAGG
GGCCAGGTCGAAACGCCGCACTTTCTGACTTTGCACTGAGGAGCCTGACAGCACGACACCGCCAGC
CAAGTCCCCAGGGGCGGACCTGGATCTGGAGGCCATGGCCCTCTGCGCTACCGGAGCAGCAGCTCCACA
GAACAGAGCCTCATGATGGGGTTGAGGGTGGAGGATGGTCCCAGCAGTGCCTCGACTGTGGCTTGTGCT
TTGCTCCCTGGCTCCCTGAGCCGACACCGTTTTCATCAGCCACAAGAAGAGACGGGGTGTGGGTAAGC
CAGTGCCTGGGCTGGGGATGGGAGGAAGAGGCCCTCCATCAAGGTCTGACCCGATGGTGGAGAC
TACCCCTGCCTGCTTCTGGAGGCCACTGACCTGTAAGGTCTGTGGCAAGAGCTGCGACAGCCCTCTAA
ACCTCAAGACCCACTTCCGCACGCATGGCATGGCTTTCATCAGGGCTCGGCAGGGGGCTGTGGGACAA
C

ACGCGTACGCGGCCGCTCGAGCAGAACTCATCTCAGAAGAGGATCTGGCAGCAATGATATCCTGGATT
ACAAGGATGACGACGATAAGGTTAA

Protein Sequence: >RC207127 representing NM_020832
 Red=Cloning site Green=Tags(s)

```

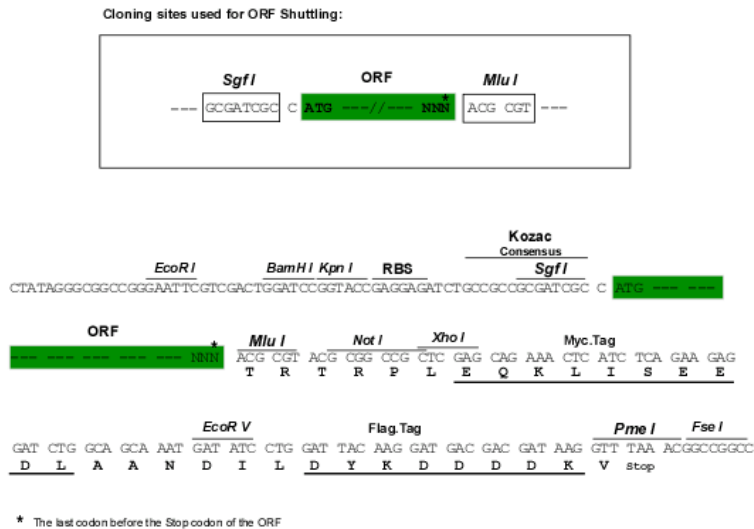
MGDMKTPDFDILLAAFDIPDIDANEAIHSGPEENEGPGGPGKPEPGVGESEDTAAASAGDGPVPAQAS
DHGLPPDISVSVIVKNTVCPEQSEALAGGSAGDGAQAAGVTKEGPVGPVPHRMQNGFGSPEPSLPGTPHS
PAPPSSGTWKEKMEGKTPLDLFAHFGPEPGDHSPLPPSAPSPTRREGALTPPPFSSFELAQENGMQ
PPVSSPPLGALKQESCSPPHPQVLAQQGSGSSPKATDIPASASPPPVAGVPPFFKQSPGHQSPPLASPKVVP
CQPLKEEDDDDEGPVDKSSPGSPQSSGAEAADEDSNDSPASSSRPLKVRIKTIKTSNGNITRTVTQVP
SDPDPAPLAEGAFLEASLLKSPATPTSEGPKVVSQVLDGTRKLGTVLPVATIQNASTAMLMAASVA
RKAVVLPGGTATSPKMIKLVGLVPQALPKADGRAGLGTGGQKVNASVVMVQPSKTATGPSTGGGTVI
SRTQSSLVEAFNKILNSKNLLPAYRPNLSPPAEAGLALPPTGYRCLCEGDAFSLKSLARHYDRSRMRE
VTCNHCCARRLVFNKCSLLLHAREHKDKGLVMQCSHLVMRPVALDQMVGPDIPTLLPVAVPPVSGPLAL
PALGKGEAITSSAITTVAEEAPVLPSTEPPAAPATSAYTCFRCLCECKEQRDKAGMAAHFQQLGPPAP
GATSNVCTCPMMLPNRCSFSAHQRMHKNRPPHVCPECGNLFQANFQTHLREACLHVSRRVGYRCPSCS
VVFGGVNSIKSHIQTSHCEVFHKCPICPMAFKSGPSAHLYSQHPSFQTQQAQLIYKCAMCDTVFTHKP
LLSSHFDOHLLPQRVSVFKCPCPLLFAQKRTMLEHLKNTHQSGRLEETAGKGAGGALLTPKTEPEELAV
SQGGAAPATESSSSSEEEVPSPEPPRPAKRPRRELGSKGLKGGGGPGGWTGCLCHSWFPERDEYVA
HMKKEHGKSVKFFPCLCERSFCSAPSLRRHVRVNHGKRVYPCRYCTEGKRTFSSRLILEKHVQVRHG
LQLGAQSPGRGTTLARGSSARAQGPGRKRRQSSDSCSEEPDSTTPPAKSPRGGPGSGHGGLRYSSTST
EQSLMGLRVEDGAQQCLDCGLCFASPGSLSRHRFISHKKRRGVGKASALGLGDGEEEAAPSRSDPDGGD
SPLPASGGPLTCKVCGKSCDSPLNLKTHFRTHGMAFIRARQGAVDN
  
```

TRTRPLEQKLISEEDLAANDILDYKDDDDKV

Chromatograms: https://cdn.origene.com/chromatograms/mg4341_g01.zip

Restriction Sites: SgfI-MluI

Cloning Scheme:

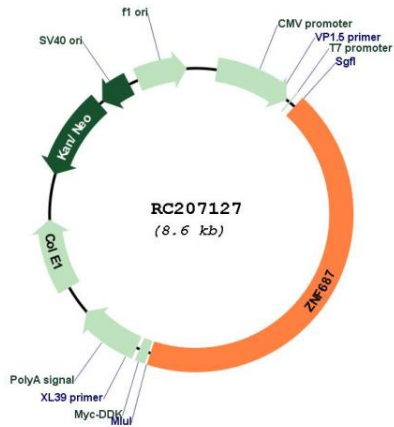


ACCN: NM_020832

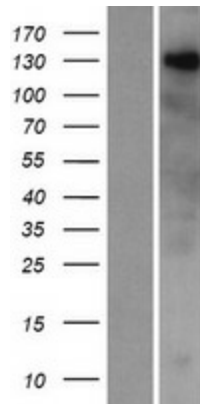
ORF Size: 3711 bp

OTI Disclaimer:	The molecular sequence of this clone aligns with the gene accession number as a point of reference only. However, individual transcript sequences of the same gene can differ through naturally occurring variations (e.g. polymorphisms), each with its own valid existence. This clone is substantially in agreement with the reference, but a complete review of all prevailing variants is recommended prior to use. More info
OTI Annotation:	This clone was engineered to express the complete ORF with an expression tag. Expression varies depending on the nature of the gene.
Components:	The ORF clone is ion-exchange column purified and shipped in a 2D barcoded Matrix tube containing 10ug of transfection-ready, dried plasmid DNA (reconstitute with 100 ul of water).
Reconstitution Method:	<ol style="list-style-type: none">1. Centrifuge at 5,000xg for 5min.2. Carefully open the tube and add 100ul of sterile water to dissolve the DNA.3. Close the tube and incubate for 10 minutes at room temperature.4. Briefly vortex the tube and then do a quick spin (less than 5000xg) to concentrate the liquid at the bottom.5. Store the suspended plasmid at -20°C. The DNA is stable for at least one year from date of shipping when stored at -20°C.
RefSeq:	NM_020832.3
RefSeq Size:	4598 bp
RefSeq ORF:	3714 bp
Locus ID:	57592
UniProt ID:	Q8N1G0
Cytogenetics:	1q21.3
Domains:	zf-C2H2
MW:	129.3 kDa
Gene Summary:	This gene encodes C2H2 zinc finger protein. The encoded protein may play a role in bone differentiation and development. Mutations in this gene are the cause of Paget disease of bone-6. Alternate splicing results in multiple transcript variants. [provided by RefSeq, Sep 2016]

Product images:



Circular map for RC207127



Western blot validation of overexpression lysate (Cat# [LY412257]) using anti-DDK antibody (Cat# [TA50011-100]). Left: Cell lysates from untransfected HEK293T cells; Right: Cell lysates from HEK293T cells transfected with RC207127 using transfection reagent MegaTran 2.0 (Cat# [TT210002]).