

Product datasheet for RC207122

Claudin 5 (CLDN5) (NM_003277) Human Tagged ORF Clone

Product data:

Product Type:	Expression Plasmids
Product Name:	Claudin 5 (CLDN5) (NM_003277) Human Tagged ORF Clone
Tag:	Myc-DDK
Symbol:	Claudin 5
Synonyms:	AWAL; BEC1; CPETRL1; TMDVCF; TMVCF
Mammalian Cell Selection:	Neomycin
Vector:	pCMV6-Entry (PS100001)
E. coli Selection:	Kanamycin (25 ug/mL)
ORF Nucleotide Sequence:	>RC207122 ORF sequence Red=Cloning site Blue=ORF Green=Tags(s)

TTTTGTAATACGACTCACTATAGGGCGGCCGGAATTCGTCGACTGGATCCGGTACCGAGGAGATCTGCC
GCC**CGATCGCC**

ATGGGGTCCGCAGCGTTGGAGATCCTGGGCCTGGTGTGCCTGGTGGGCTGGGGGGTCTGATCCTGG
CGTGCGGGCTGCCATGTGGCAGGTGACCGCCTCCTGGACCACAACATCGTGACGGCGCAGACCACCTG
GAAGGGGCTGTGGATGTCGTGCGTGGTGCAGAGCACCGGGCACATGCAGTGCAAAGTGTACGACTCGGTG
CTGGCTCTGAGCACCGAGGTGCAGGCGGCGGGCGCTCACCGTGAGCGCCGTGCTGCTGGCGTTTCGTTG
CGCTCTTCGTGACCCTGGCGGGCGCAGTGCACCACCTGCGTGGCCCCGGGCCCAAGGCGCGTGT
GGCCCTACGGGAGGCGTCTACCTGTTTTGCGGGCTGCTGGCGCTCGTGCCACTCTGCTGGTTTCGCC
AACATTGTCGTCCGCGAGTTTTACGACCCGTCTGTGCCCGTGTGCGAGAAGTACGAGCTGGGCGCAGCGC
TGTACATCGGCTGGGCGGCCACCGCGCTGCTCATGGTAGGCGGCTGCCTCTTGTGCTGCGGGCCTGGGT
CTGCACCGCCGTCCCGACCTCAGCTTCCCCGTGAAGTACTCAGCGCCGCGGGCGCCACGGCCACCGGC
GACTACGACAAGAAGAACTACGTC

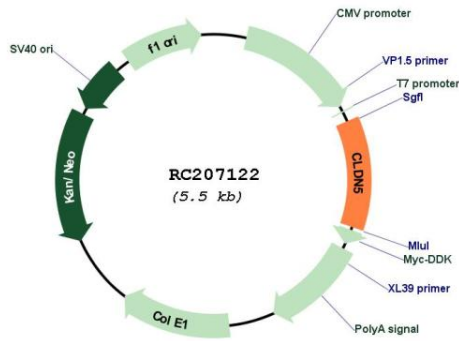
ACGCGTACGCGGGCGCTCGAGCAGAACTCATCTCAGAAGAGGATCTGGCAGCAAATGATATCCTGGATT
ACAAGGATGACGACGATAAGGTTTAA



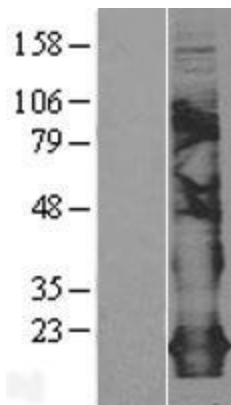
[View online »](#)

Reconstitution Method:	<ol style="list-style-type: none">1. Centrifuge at 5,000xg for 5min.2. Carefully open the tube and add 100ul of sterile water to dissolve the DNA.3. Close the tube and incubate for 10 minutes at room temperature.4. Briefly vortex the tube and then do a quick spin (less than 5000xg) to concentrate the liquid at the bottom.5. Store the suspended plasmid at -20°C. The DNA is stable for at least one year from date of shipping when stored at -20°C.
Note:	Plasmids are not sterile. For experiments where strict sterility is required, filtration with 0.22um filter is required.
RefSeq:	<u>NM_003277.2, NP_003268.1</u>
RefSeq Size:	1720 bp
RefSeq ORF:	912 bp
Locus ID:	7122
UniProt ID:	<u>O00501</u>
Cytogenetics:	22q11.21
Domains:	PMP22_Claudin
Protein Families:	Transmembrane
Protein Pathways:	Cell adhesion molecules (CAMs), Leukocyte transendothelial migration, Tight junction
MW:	23.1 kDa
Gene Summary:	This gene encodes a member of the claudin family. Claudins are integral membrane proteins and components of tight junction strands. Tight junction strands serve as a physical barrier to prevent solutes and water from passing freely through the paracellular space between epithelial or endothelial cell sheets. Mutations in this gene have been found in patients with velocardiofacial syndrome. Alternative splicing results in multiple transcript variants encoding distinct isoforms. [provided by RefSeq, May 2018]

Product images:



Circular map for RC207122



Western blot validation of overexpression lysate (Cat# [LY401129]) using anti-DDK antibody (Cat# [TA50011-100]). Left: Cell lysates from untransfected HEK293T cells; Right: Cell lysates from HEK293T cells transfected with RC207122 using transfection reagent MegaTran 2.0 (Cat# [TT210002]).