

Product datasheet for RC207112

Paralemmin (PALM) (NM_002579) Human Tagged ORF Clone

Product data:

Product Type:	Expression Plasmids
Product Name:	Paralemmin (PALM) (NM_002579) Human Tagged ORF Clone
Tag:	Myc-DDK
Symbol:	Paralemmin
Synonyms:	PALM1
Mammalian Cell Selection:	Neomycin
Vector:	pCMV6-Entry (PS100001)
E. coli Selection:	Kanamycin (25 ug/mL)
ORF Nucleotide Sequence:	>RC207112 ORF sequence Red=Cloning site Blue=ORF Green=Tags(s)

TTTTGTAATACGACTCACTATAGGGCGGCCGGAATTCGTCGACTGGATCCGGTACCGAGGAGATCTGCC
GCC**CGATCGCC**

ATGGAGGTCTGGCGGCAGAGACCAGTCCCAGCAGGAGCGGCTGCAGGCCATCGCAGAGAAGCGGAAGC
GGCAGGGCGGAGATCGAGAACAAGCGCCGGCAGCTGGAGGACGAGCGGAGGCAGCTGCAGCACCTGAAGTC
CAAGGCACTGCGGGAGCGCTGGTGTGGAGGGGACGCCGCTCTCGCCCTCAGAGGGGGATGAGGACCTG
AGGAGGCAGATGCAGGACGACGAGCAGAAGACACGGCTGTGGAGGACTCGGTGTCCAGGTTGGAGAAGG
AAATTGAGGTGTGGAGCGTGGAGACTCCGCCCCAGCCACTGCCAAGGAGAACCGGGCGGCCCGAGCCC
AGTCCGGGCCCCAGCCCCGAGTCCAGCCAAGGAGGAGCGCAAGACAGAGGTGGTGAATTCACAGCAG
ACGCCGGTGGGCACGCCAAAGACAAGCGAGTCTCCAACACGCCCTGAGGACGGTTGACGGCTCCCCCA
TGATGAAGGCAGCCATGTACTCGGTTGAGATCACTGTGGAGAAGGACAAGGTGACAGGGGAGACCAGGGT
GCTGTCCAGCACCGTGTCTCCCTCGGCAGCCGCTCCCTCTGGGCATCAAAGTCTACGAGGACGAGACC
AAAGTGGTCCATGCTGTGGACGGCACCGCCGAGAACGGGATCCACCCCTGAGCTCCTCCGAGGTGGACG
AACTCATCCACAAAGCGGACGAGGTCACGCTGAGCGAGGCAGGGTCCACGGCCGGGGCGGAGAGACCCG
GGGGCTGTGGAGGGGGCAGCCCCGACCACGCCCTCCCGCGGGGAGATCACCGGTGTGCAGGCACAGCCA
GGCGAGCCACGTCCGGCCCGCCGGGATCCAGCCCGCCAGGAGCCCCGGTCACAATGATCTTTCATGG
GTTACCAGAACGTGGAGGATGAGGCCGAGACCAAGAAGGTGCTGGGCCTTCAAGATACCATCACGGCGGA
GCTGGTGGTCATCGAAGACGCGGCTGAGCCCAAGGAGCCTGCACCACCCAACGGCAGTGCTGCCAGCCT
CCCACGGAGGCCCTCCAGGGAAGAGAATCAGGCGGGGCCGAGGCCACCACCGCAGCCCCAGGACC
TCGACATGAAGAAGCACCGTTGTAATGCTGCTCCATCATG

ACGGTACGGGCCGCTCGAGCAGAACTCATCTCAGAAGAGGATCTGGCAGCAATGATATCCTGGATT
ACAAGGATGACGACGATAAGGTTTAA



[View online »](#)

Protein Sequence: >RC207112 protein sequence
Red=Cloning site Green=Tags(s)

```
MEVLA AETTSQQERLQAI AEKRKRQAEIENKRRQLEDERRQLQHLKSKALRERWLLLEGTPSSASEGDEDL
RRQM QDDEQKTRLLEDVSRLEKEIEVLERGDSAPATAKENAAAPSPVRAPAPSPAKEERKTEVVMNSQQ
TPVGT PKDKRVSNTPLRTVDGSPMMKAAMYSVEITVEKDKVTGETRVLSSSTLLPRQPLPLGIKVYEDET
KVVHAVDGT AENGIHPLSSSEVDEL IHKADEVTLSEAGSTAGAAETRGAVEGAARTTPSRREITGVQAQP
GEATSGPPGIQPGQEPVMTIMFGYQNVDEAEATKKVGLGLQDITITAE LVVIEDAAEPKEPAPPNGSAAEP
PTEAASREENQAGPEATSDPQDLDMKKHRCKCCSIM
```

TRTRPLEQKLISEEDLAANDILDYKDDDDKV

Chromatograms: https://cdn.origene.com/chromatograms/mk6279_c04.zip

Restriction Sites: SgfI-MluI

Cloning Scheme:



* The last codon before the Stop codon of the ORF

ACCN: NM_002579

ORF Size: 1161 bp

OTI Disclaimer: The molecular sequence of this clone aligns with the gene accession number as a point of reference only. However, individual transcript sequences of the same gene can differ through naturally occurring variations (e.g. polymorphisms), each with its own valid existence. This clone is substantially in agreement with the reference, but a complete review of all prevailing variants is recommended prior to use. [More info](#)

OTI Annotation: This clone was engineered to express the complete ORF with an expression tag. Expression varies depending on the nature of the gene.

Components: The ORF clone is ion-exchange column purified and shipped in a 2D barcoded Matrix tube containing 10ug of transfection-ready, dried plasmid DNA (reconstitute with 100 ul of water).

Reconstitution Method:

1. Centrifuge at 5,000xg for 5min.
2. Carefully open the tube and add 100ul of sterile water to dissolve the DNA.
3. Close the tube and incubate for 10 minutes at room temperature.
4. Briefly vortex the tube and then do a quick spin (less than 5000xg) to concentrate the liquid at the bottom.
5. Store the suspended plasmid at -20°C. The DNA is stable for at least one year from date of shipping when stored at -20°C.

RefSeq: [NM_002579.3](#)

RefSeq Size: 2890 bp

RefSeq ORF: 1164 bp

Locus ID: 5064

UniProt ID: [O75781](#)

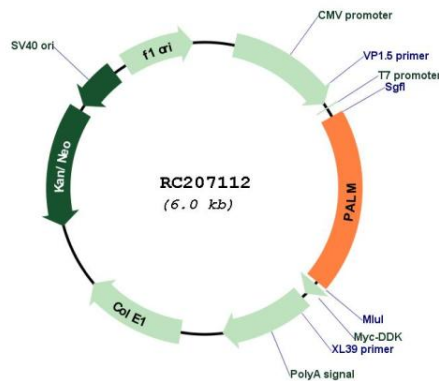
Cytogenetics: 19p13.3

Domains: Paralemmin

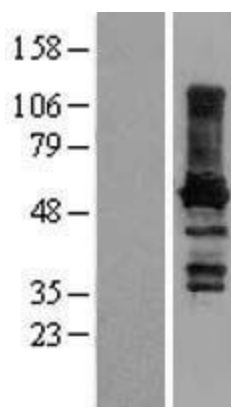
MW: 42.1 kDa

Gene Summary: This gene encodes a member of the paralemmin protein family. The product of this gene is a prenylated and palmitoylated phosphoprotein that associates with the cytoplasmic face of plasma membranes and is implicated in plasma membrane dynamics in neurons and other cell types. Several alternatively spliced transcript variants have been identified, but the full-length nature of only two transcript variants has been determined. [provided by RefSeq, Jul 2008]

Product images:



Circular map for RC207112



Western blot validation of overexpression lysate (Cat# [LY419238]) using anti-DDK antibody (Cat# [TA50011-100]). Left: Cell lysates from untransfected HEK293T cells; Right: Cell lysates from HEK293T cells transfected with RC207112 using transfection reagent MegaTran 2.0 (Cat# [TT210002]).