

Product datasheet for RC207109

CSRP1 (NM_004078) Human Tagged ORF Clone

Product data:

Product Type: Expression Plasmids
Product Name: CSRP1 (NM_004078) Human Tagged ORF Clone
Tag: Myc-DDK
Symbol: CSRP1
Synonyms: CRP; CRP1; CSRP; CYRP; D1S181E; HEL-141; HEL-S-286
Mammalian Cell Selection: Neomycin
Vector: pCMV6-Entry (PS100001)
E. coli Selection: Kanamycin (25 ug/mL)
ORF Nucleotide Sequence: >RC207109 ORF sequence
 Red=Cloning site Blue=ORF Green=Tags(s)

TTTTGTAATACGACTCACTATAGGGCGGCCGGAATTCGTCGACTGGATCCGGTACCGAGGAGATCTGCC
GCC**CGATCGCC**

ATGCCGAAGTGGGGAGGAGGCAAGAAATGTGGGGTGTGTCAGAAGACGGTTTACTTTGCCGAAGAGGTTTC
AGTGCGAAGGCAACAGCTTCCATAAATCCTGCTTCTGTGCATGGTCTGCAAGAAGAATCTGGACAGTAC
CACTGTGGCCGTGCATGGTGAGGAGATTTACTGCAAGTCTGCTACGGCAAGAAGTATGGGCCAAAGGC
TATGGCTACGGGCAGGGCGCAGGCACCCTCAGCACTGACAAGGGGAGTCGCTGGGTATCAAGCACGAGG
AAGCCCTGGCCACAGGCCACCACCAACCCCAATGCATCCAAATTTGCCAGAAGATTGGTGGCTCCGA
GCGCTGCCCCGATGCAGCCAGGCAGTCTATGCTGCGGAGAAGGTGATTGGTGTGGGAAGTCTGGCAT
AAGGCCTGCTTTTCGATGTGCAAGTGTGGCAAAGGCCTTGAGTCAACCACCCTGGCAGACAAGGATGGCG
AGATTTACTGCAAGGATGTTATGCTAAAACTTCGGGCCAAGGGCTTTGGTTTTGGGCAAGGAGCTGG
GGCCTTGGTCCACTCTGAG

ACGCGTACGCGGCCGCTCGAGCAGAACTCATCTCAGAAGAGGATCTGGCAGCAATGATATCCTGGATT
ACAAGGATGACGACGATAAGGTTTAA

Protein Sequence: >RC207109 protein sequence
 Red=Cloning site Green=Tags(s)

MPNWGGGKKKGCVCQKTVYFAEEVQCEGNSFHKSCFLCMVCKKNLDSTTVAVHGEEIYCKSCYKGYGPKG
YGYGQAGTLSTDKGESLGIKHEEAPGHRPTTNPASKFAQKIGGSERCPRCSQAVYAAEKVIGAGKSWH
KACFRCAKCGKLESTTLADKDGEIYCKGKYAKNFGPKGF GFGGAGALVHSE

TRTRPLEQKLISEEDLAANDILDYKDDDDKV

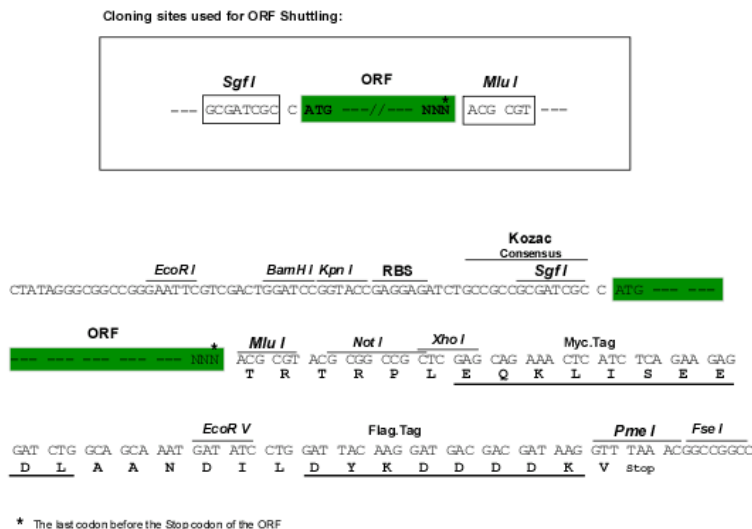


[View online »](#)

Chromatograms: https://cdn.origene.com/chromatograms/mk6334_c12.zip

Restriction Sites: SgfI-MluI

Cloning Scheme:



ACCN: NM_004078

ORF Size: 579 bp

OTI Disclaimer: The molecular sequence of this clone aligns with the gene accession number as a point of reference only. However, individual transcript sequences of the same gene can differ through naturally occurring variations (e.g. polymorphisms), each with its own valid existence. This clone is substantially in agreement with the reference, but a complete review of all prevailing variants is recommended prior to use. [More info](#)

OTI Annotation: This clone was engineered to express the complete ORF with an expression tag. Expression varies depending on the nature of the gene.

Components: The ORF clone is ion-exchange column purified and shipped in a 2D barcoded Matrix tube containing 10ug of transfection-ready, dried plasmid DNA (reconstitute with 100 ul of water).

Reconstitution Method:

1. Centrifuge at 5,000xg for 5min.
2. Carefully open the tube and add 100ul of sterile water to dissolve the DNA.
3. Close the tube and incubate for 10 minutes at room temperature.
4. Briefly vortex the tube and then do a quick spin (less than 5000xg) to concentrate the liquid at the bottom.
5. Store the suspended plasmid at -20°C. The DNA is stable for at least one year from date of shipping when stored at -20°C.

Note: Plasmids are not sterile. For experiments where strict sterility is required, filtration with 0.22um filter is required.

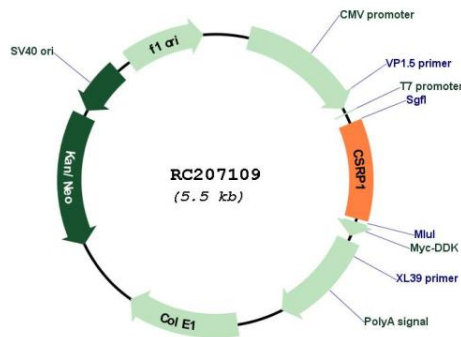
RefSeq: [NM_004078.3](#)

RefSeq Size: 1970 bp

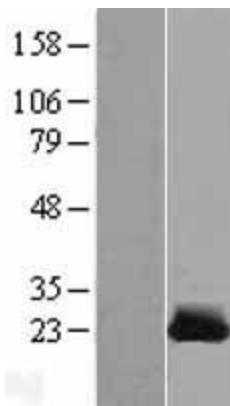
RefSeq ORF: 582 bp
 Locus ID: 1465
 UniProt ID: [P21291](#)
 Cytogenetics: 1q32.1
 Domains: LIM
 MW: 20.6 kDa

Gene Summary: This gene encodes a member of the cysteine-rich protein (CSRP) family. This gene family includes a group of LIM domain proteins, which may be involved in regulatory processes important for development and cellular differentiation. The LIM/double zinc-finger motif found in this gene product occurs in proteins with critical functions in gene regulation, cell growth, and somatic differentiation. Alternatively spliced transcript variants have been described. [provided by RefSeq, Aug 2010]

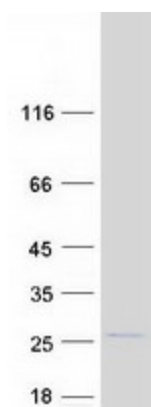
Product images:



Circular map for RC207109



Western blot validation of overexpression lysate (Cat# [LY418221]) using anti-DDK antibody (Cat# [TA50011-100]). Left: Cell lysates from untransfected HEK293T cells; Right: Cell lysates from HEK293T cells transfected with RC207109 using transfection reagent MegaTran 2.0 (Cat# [TT210002]).



Coomassie blue staining of purified CSRP1 protein (Cat# [TP307109]). The protein was produced from HEK293T cells transfected with CSRP1 cDNA clone (Cat# RC207109) using MegaTran 2.0 (Cat# [TT210002]).