

Product datasheet for RC207107

DHR SX (NM_145177) Human Tagged ORF Clone

Product data:

Product Type:	Expression Plasmids
Product Name:	DHR SX (NM_145177) Human Tagged ORF Clone
Tag:	Myc-DDK
Symbol:	DHR SX
Synonyms:	CXorf11; DHR S5X; DHR S5Y; DHR SX Y; DHR SY; SDR 7C6; SDR 46C1
Mammalian Cell Selection:	Neomycin
Vector:	pCMV6-Entry (PS100001)
E. coli Selection:	Kanamycin (25 ug/mL)
ORF Nucleotide Sequence:	>RC207107 ORF sequence Red=Cloning site Blue=ORF Green=Tags(s)

TTTTGTAATACGACTCACTATAGGGCGGCCGGAATTCGTCGACTGGATCCGGTACCGAGGAGATCTGCC
GCC**CGATCGC**C

ATGTGCGCCATTGTCTGCGGCGGGGCGGCCCTGCGGGTCTACGCGGTAGGCGCCGCGGTGATCCTGGCGC
AGCTGTGCGGCGCTGCCGCGGGGCTTCTGGAGCCAGTTTTCCCCCAGACCTGACCGTGTGCTAT
AGTGACGGGAGGGACAGATGGCATTGGCTATTCTACAGCGAAGCATCTGGCGAGACTTGGCATGCATGTT
ATCATAGCTGAAATAATGACAGCAAAGCAAACAAGTTGTAAGCAAAAATAAAGAAGAAACCTTGAACG
ACAAAGTGAATTTTTACTGTGACTTGGCTTCCATGACTTCCATCCGGCAGTTTGTGCAGAAGTTCAA
GATGAAGAAGATTCTCTCCATGTCCTGATCAACAATGCTGGGGTATGATGGTCCCTCAGAGGAAAACC
AGAGATGGATTCAAGAACAATTCGCGCCTGAACTACCTAGGGCACTTCTGCTGACCAACCTTCTCTTGG
ATACGCTGAAAGAGTCTGGGTCCCCTGGCCACAGTGCGAGGGTGGTACCCTCTCTCTGCCACCCATTA
CGTCGCTGAGCTGAACATGGATGACCTTACAGAGCAGTGCCTGCTACTCACCCACGCAGCCTACGCCAG
AGCAAGCTGGCCCTTGTCTGTTACCTACCACCTCCAGCGGCTGCTGGCGGCTGAGGGAAGCCACGTGA
CCGCCAACGTGGTGGACCCCGGGTGGTCAACACGGACCTCTACAAGCACGTGTTCTGGGCCACCCGTCT
GGCGAAGAAGCTTCTCGGCTGGTTGCTTTTCAAGACCCCGATGAAGGAGCGTGGACTTCCATCTACGCA
GCAGTCAACCCAGAGCTGGAAGGAGTTGGTGGCCGTTACCTATAACAACGAGAAAGAGACCAAGTCCCTCC
ACGTACCTACAACCAGAACTGCAGCAGCAGCTGTGGTCTAAGAGTTGTGAGATGACTGGGGTCCCTTGA
TGTGACCCTG

ACGCGTACGCGGCCGCTCGAGCAGAACTCATCTCAGAAGAGGATCTGGCAGCAATGATATCCTGGATT
ACAAGGATGACGACGATAAGGTTTAA



Protein Sequence: >RC207107 protein sequence
Red=Cloning site Green=Tags(s)

MSPLSAARAALRVYAVGAAVILAQLLRRCRGGFLEPVFPPRPDRVAIVTGGTDGIGYSTAKHLARLGMHV
 I IAGNNSKAKQVYSKIKEETLNDKVEFLYCDLASMTSIRQFVQKFKMKKIPLHVLINNAGVMMVPQRKT
 RDGFEEHFGLNYLGHFLLTNLLDLTKESGSPGHSARVVTSSATHYVAELNMDLQSSACYSPPHAAAYAQ
 SKLALVLFYHLQRLLAEGSHVTANVVDPGVVNTDLYKHVFWATRLAKKLLGWLLFKTPDEGAWTSIYA
 AVTPELEGVGGRYLYNEKETKSLHVTYNQKLQQQLWSKSCEMTGVL DVTL

TRTRPLEQKLISEEDLAANDILDYKDDDDKV

Chromatograms: https://cdn.origene.com/chromatograms/mk6334_c04.zip

Restriction Sites: SgfI-MluI

Cloning Scheme:



ACCN: NM_145177

ORF Size: 990 bp

OTI Disclaimer: The molecular sequence of this clone aligns with the gene accession number as a point of reference only. However, individual transcript sequences of the same gene can differ through naturally occurring variations (e.g. polymorphisms), each with its own valid existence. This clone is substantially in agreement with the reference, but a complete review of all prevailing variants is recommended prior to use. [More info](#)

OTI Annotation: This clone was engineered to express the complete ORF with an expression tag. Expression varies depending on the nature of the gene.

Components: The ORF clone is ion-exchange column purified and shipped in a 2D barcoded Matrix tube containing 10ug of transfection-ready, dried plasmid DNA (reconstitute with 100 ul of water).

Reconstitution Method:

1. Centrifuge at 5,000xg for 5min.
2. Carefully open the tube and add 100ul of sterile water to dissolve the DNA.
3. Close the tube and incubate for 10 minutes at room temperature.
4. Briefly vortex the tube and then do a quick spin (less than 5000xg) to concentrate the liquid at the bottom.
5. Store the suspended plasmid at -20°C. The DNA is stable for at least one year from date of shipping when stored at -20°C.

RefSeq: [NM_145177.1](#), [NP_660160.1](#)

RefSeq Size: 2596 bp

RefSeq ORF: 993 bp

Locus ID: 207063

UniProt ID: [Q8N5I4](#)

Cytogenetics: X;Y

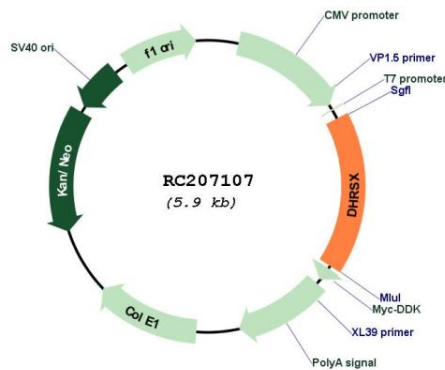
Domains: adh_short

Protein Families: Druggable Genome

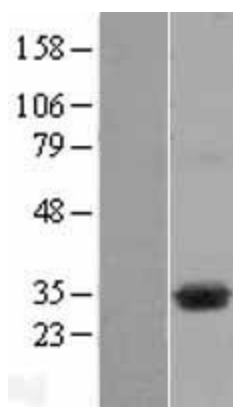
MW: 36.5 kDa

Gene Summary: Involved in the positive regulation of starvation-induced autophagy (PubMed:25076851).
[UniProtKB/Swiss-Prot Function]

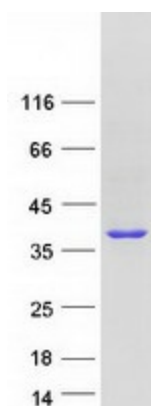
Product images:



Circular map for RC207107



Western blot validation of overexpression lysate (Cat# [LY408039]) using anti-DDK antibody (Cat# [TA50011-100]). Left: Cell lysates from untransfected HEK293T cells; Right: Cell lysates from HEK293T cells transfected with RC207107 using transfection reagent MegaTran 2.0 (Cat# [TT210002]).



Coomassie blue staining of purified DHRXS protein (Cat# [TP307107]). The protein was produced from HEK293T cells transfected with DHRXS cDNA clone (Cat# RC207107) using MegaTran 2.0 (Cat# [TT210002]).