

Product datasheet for **RC207103**

TIMM44 (NM_006351) Human Tagged ORF Clone

Product data:

Product Type:	Expression Plasmids
Product Name:	TIMM44 (NM_006351) Human Tagged ORF Clone
Tag:	Myc-DDK
Symbol:	TIMM44
Synonyms:	TIM44
Mammalian Cell Selection:	Neomycin
Vector:	pCMV6-Entry (PS100001)
E. coli Selection:	Kanamycin (25 ug/mL)



[View online »](#)

ORF Nucleotide Sequence:

>RC207103 ORF sequence
 Red=Cloning site Blue=ORF Green=Tags(s)

TTTTGTAATACGACTCACTATAGGGCGGCCGGGAATTCGTCGACTGGATCCGGTACCGAGGAGATCTGCC
 GCC**CGGATCGCC**

ATGGCGGGCGGCCCTGCGGAGTGGCTGGTGCCGCTGTCCACGGAGATGCCTCGGCAGTGGAAATCCAAT
 TTCTTTCCAGCCACAACCTACCCATGGGTCGACCTATCAGATGCGCCGGCCGGGCGGAGAGCTGCCACT
 GTCAAATCATATTCTTCTGAAACAGAAAAGGCTTTCTGTCCGGCTTGCTAGATAATGTCAAACAAGAA
 TTAGCCAAAAACAAGAAATGAAAGAAAGTATAAAAAATTCCTGACGAGGCCAGAAGGCTAGAAGAAT
 CAGACGTGCTCCAGGAGGCCAGAAGGAAATACAAAACCATCGAGTCAGAAAACCGTGGGACGAGCGAGGT
 GCTACGGAAGAAGCTTGGGGAGCTGACGGGCACCGTGAAGGAGAGCCTTACGAAGTCAGTAAAAGTGAT
 CTCGGCCGGAAAATCAAGGAGGGCGTGGAGGAAGCAGCCAAGACGGCCAAGCAGTCGGCCGAGTCGGTAT
 CCAAAGGCGGGGAGAAGCTGGGCAGGACAGCGGCTTCCAGAGCCCTCTCCAGGGGGTGGAGTCCGTGAA
 GAAGGAAATTGACGACAGCGTCTGGGACAGACCGGGCCCTACCGAGGGCCCAGCGACTCCGGAAGAGA
 ACGGAGTTTGGCGGAGATAAGTTCAAGGAGGAGAAAGTGTGGAGCCAAACGAGGAGGCCCTGGGGTCCG
 TGCTGCACAAGGACTCCAAGTGGTACCAGCAGTGGAAAGGACTTCAAGGAGAAACAAGTGGTGTAAACCG
 GTTCTTCGAGATGAAGATGAAGTATGACGAAAGCGACAACCGGTCATCCGGGCATCCCGGGCCCTTACG
 GACAAGTCCAGGACTTGGTGGGGGCTGTTCTCCAAGACAGAGATGTCGGAGGTGCTCACGGAGATCC
 TCCGGGTGGACCCGGCCTTTGACAAGGACCGGTTTCTGAAACAGTGCAGAACGACATCATCCCAATGT
 CCTGGAGGCCATGATTTCTGGAGAGCTTACATTCTCAAAGACTGGTGTATGAAGCTACTTACAGCCAG
 CTGGCCACCCCATCCAGCAGGCCAAGGCACTGGGTCTCCAGTCCATTCTCGCATCTAGACATTGACA
 AGTTCGACCTGGCCATGGCAAGATGATGGAGCAGGGGGCCGGTGTGATCATCACCTCCAGGCACAGCT
 GGTGATGGTGGTCAAGAACCCAAAGGCGAGGTGGTGGAGGGTGACCCGGACAAGGTGCTGCGGATGCTG
 TACGTGTGGGCGCTCTGCCGAGACCAGGACGAGCTCAACCCCTACGCGGCTGGGGCTCTGGACATCT
 CGGCTCCAGCACCGAGCAGATTCTC

AG**CGGACCG**ACGCGTACGCGGCCGCTCGAGCAGAAACTCATCTCAGAAGAGGATCTGGCAGCAAATGATATCC
 TGGATTACAAGGATGACGACGATAAGGTTAA

Protein Sequence:

>RC207103 protein sequence
 Red=Cloning site Green=Tags(s)

MAAAALRSGWCRCPRRCLGSGIQFLSSHNLPHGSTYQMRRPGEPLSKSYSSGNRKGFLSGLLDNVKQE
 LAKNKEMKESIKKFRDEARRLEESDVLQEARRKYKTIESETVRTSEVLRKKLGELTGTVKESLHEVSKSD
 LGRKIKEGVEEAAKTAKQSAESVSKGGEKLGRTAAFRALSQGVESVKKEIDDSVLGQTGPYRRPQRLRKR
 TEFAGDKFKEEKVFEPEEALGVVLHKDSKWKDFKKNVVFNRFFEMKMKYDESDNAFIRASRAL
 DKVTDLLGGLFSKTEMSEVLTEILRVDPAFDKDRFLKQCENDIIPNVLEAMISGELDILKWCYEATYSQ
 LAHPIQQAKALGLQFHSRILDIDNVDLAMGKMEQGPVLIITFQAQLVMVVRNPKGEVVEGDPDKVLRML
 YVWALCRDQDELNPYAAWRLLDISASSTEQIL

SGPTRTRPLEQKLI SEEDLAANDILDYKDDDDKV

Chromatograms:

https://cdn.origene.com/chromatograms/mk6619_f12.zip

Restriction Sites:

SgfI-RsrII

Cloning Scheme:


ACCN: NM_006351

ORF Size: 1356 bp

OTI Disclaimer: The molecular sequence of this clone aligns with the gene accession number as a point of reference only. However, individual transcript sequences of the same gene can differ through naturally occurring variations (e.g. polymorphisms), each with its own valid existence. This clone is substantially in agreement with the reference, but a complete review of all prevailing variants is recommended prior to use. [More info](#)

OTI Annotation: This clone was engineered to express the complete ORF with an expression tag. Expression varies depending on the nature of the gene.

Components: The ORF clone is ion-exchange column purified and shipped in a 2D barcoded Matrix tube containing 10ug of transfection-ready, dried plasmid DNA (reconstitute with 100 ul of water).

Reconstitution Method:

1. Centrifuge at 5,000xg for 5min.
2. Carefully open the tube and add 100ul of sterile water to dissolve the DNA.
3. Close the tube and incubate for 10 minutes at room temperature.
4. Briefly vortex the tube and then do a quick spin (less than 5000xg) to concentrate the liquid at the bottom.
5. Store the suspended plasmid at -20°C. The DNA is stable for at least one year from date of shipping when stored at -20°C.

RefSeq: [NM_006351.4](#)

RefSeq Size: 2017 bp

RefSeq ORF: 1359 bp

Locus ID: 10469

UniProt ID: [O43615](#)

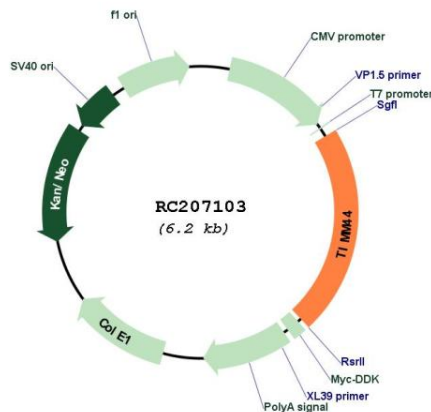
Cytogenetics: 19p13.2

Domains: Tim44

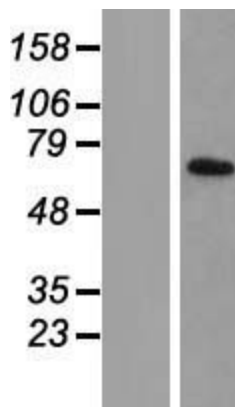
MW: 51.4 kDa

Gene Summary: This gene encodes a peripheral membrane protein associated with the mitochondrial inner membrane translocase, which functions in the import of proteins across the mitochondrial inner membrane and into the mitochondrial matrix. The encoded protein mediates binding of mitochondrial heat shock protein 70 to the translocase of inner mitochondrial membrane 23 (TIM23) complex. Expression of this gene is upregulated in kidney in a mouse model of diabetes. A mutation in this gene is associated with familial oncocyctic thyroid carcinoma. [provided by RefSeq, Jul 2016]

Product images:



Circular map for RC207103



Western blot validation of overexpression lysate (Cat# [LY416706]) using anti-DDK antibody (Cat# [TA50011-100]). Left: Cell lysates from untransfected HEK293T cells; Right: Cell lysates from HEK293T cells transfected with RC207103 using transfection reagent MegaTran 2.0 (Cat# [TT210002]).