

Product datasheet for **RC207102**

Hsp105 (HSPH1) (NM_006644) Human Tagged ORF Clone

Product data:

Product Type:	Expression Plasmids
Product Name:	Hsp105 (HSPH1) (NM_006644) Human Tagged ORF Clone
Tag:	Myc-DDK
Symbol:	Hsp105
Synonyms:	HSP105; HSP105A; HSP105B; NY-CO-25
Mammalian Cell Selection:	Neomycin
Vector:	pCMV6-Entry (PS100001)
E. coli Selection:	Kanamycin (25 ug/mL)



[View online »](#)

ORF Nucleotide Sequence:

>RC207102 ORF sequence
 Red=Cloning site Blue=ORF Green=Tags(s)

TTTTGTAATACGACTCACTATAGGGCGGCCGGAATTCGTCGACTGGATCCGGTACCGAGGAGATCTGCC
 GCC**CGCATCGCC**

ATGTCGGTGGTGGGGTTGGACGTGGGCTCGCAGAGCTGCTACATCGCGGTAGCCCGGCCGGGGCATCG
 AGACCATCGCAATGAGTTCAGCGACCGGTGCACCCCGTCAGTCATATCATTTGGATCAAAAAATAGAAC
 AATCGGAGTTGCAGCAAAAAATCAGCAAACTCACTCATGCAAAACAATACGGTGTCTAACTTCAAAAGATT
 CATGGCCGAGCATTCAATGACCCCTTCATTCAAAAGGAGAAGGAAAACTTGAGTTACGATTTGGTCCAT
 TGAAAAATGGTGGAGTTGGAATAAAGGTAATGTACATGGGTGAAGAACATCTATTTAGTGTGGAGCAGAT
 AACAGCCATGTTGTTGACTAAGCTGAAGGAACTGCTGAAAACAGCCTCAAGAAACAGTAAACAGATTGT
 GTTATTTTCAGTCCCCTCCTTCTTACAGATGCTGAGAGGCGATCTGTGTTAGATGCTGCACAGATTGTTG
 GCCTAACTGTTAAGACTTATGAATGACATGACAGCTGTTGCTTTGAATTACGGAAATTTATAAGCAGGA
 TCTCCCAAGCCTGGATGAGAAACCTCGGATAGTGGTTTTTGTGATATGGGACATTCAGCTTTTCAAGTG
 TCTGCTTGTGCTTTTAAACAAGGAAAAATGAAGGTAAGTGGAAACAGCTTTTGATCCTTTCTTAGGAGGAA
 AAAACTTCGATGAAAAGTTAGTGGAACTTTTTGTGCAAGATTTAAAACAAAGTACAAGTTGGATGCAAA
 ATCCAAAATACGAGCACTCCTACGTCTGTATCAGGAATGTGAAAACTGAAAAAGCTAATGAGCTAATC
 AGCACAGACCTTCCACTGAATATCGAATGCTTTATGAATGATAAAGATGTTTCCGGAAAGATGAACAGGT
 CACAATTTGAAGAAGTCTGTGCTGAAGTCTGCAAAAGATAGAAGTACCCCTTTATTCAGTGTGGAAACA
 AACTCATCTCAAAGTGAAGATGTGAGTGCAGTTGAGATTGTTGGAGGCGCTACACGAATCCAGCTGTG
 AAGGAAAGAAATGCCAAATCTTTGGAAAAGATATTAGCACAACACTCAATGCAGATGAAGCAGTAGCCA
 GAGGATGTGCATTACAGTGTGCAATACTTCCCGGCATTTAAAGTTAGAGAATTTCCGTCACAGATGC
 AGTTCCTTTTCCAATATCTCTGATCTGGAACCATGATTGAGAAAGATACTGAAGGTTCATGAAGTCTTT
 AGTCGAAACCATGCTGCTCCTTTCTCAAAGTCTCACCTTTCTGAGAAGGGGCGCTTTTGGAGTGAAG
 CTTTCTATTCTGATCCCCAAGGAGTTCATATCCAGAAGCAAAAAAGGCCGCTTTGTAGTTCAGAAATGT
 TTCTGCACAGAAAGATGGAGAAAACTAGAGTAAAAGTCAAAGTGCAGTCAACACCCATGGCATTTC
 ACCATCTCTACGGCATCTATGGTGGAGAAAGTCCCAACTGAGGAGAATGAAATGTCTTCTGAAGCTGACA
 TGGAGTGTCTGAATCAGAGACCACCAGAAAACCCAGACACTGATAAAAAATGTCCAGCAAGACAACAGTGA
 AGCTGGAACACAGCCCCAGGTACAACTGATGCTCAACAAACCTCACAGTCTCCCCCTTCACCTGAACTT
 ACCTCAGAAGAAAAACAAATCCCAGATGCTGACAAAGCAATGAAAAAAAAGTTGACCAGCCTCCAGAAG
 CTAAAAAGCCCAAAATAAAGGTGGTGAATGTTGAGCTGCCTATTGAAGCCAATTGGTCTGGCAGTTAGG
 GAAAGACCTTCTAACATGTATATTGAGACAGAGGGTAAGATGATAATGCAAGATAAATTGGAAAAAGAA
 AGGAATGATGCTAAAAATGCAGTTGAGGAATATGTGTATGAGTTCAGAGACAAGCTGTGTGGACCATATG
 AAAAAATTTATATGTGAGCAGGATCATCAAAATTTTTGAGACTCCTCACAGAACTGAAGACTGGCTGTA
 TGAAGAAGGAGAGGACCAAGCTAAACAAGCATATGTTGACAAGTTGGAAGAATTAATGAAAATGGCACT
 CCAGTTAAAGTTCGGTTTCAGGAAGCTGAAGAACGGCCAAAAATGTTTGAAGAAGTAGGACAGAGGCTGC
 AGCATTATGCCAAGATAGCAGCTGACTTCAGAAATAAGGATGAGAAATACAACCATATTGATGAGTCTGA
 AATGAAAAAAGTGGAGAAGTCTGTTAATGAAGTATGGAATGGATGAATAATGTCATGAATGCTCAGGCT
 AAAAAAGTCTTGATCAGGATCCAGTTGTACGTGCTCAGGAAATTAACAAAAAATCAAGGAATTGAACA
 ACACATGTGAACCGTTGTAACAACCAACCAAAAAATTAATCACCACAACTGGAAAGAACTCCAAA
 TGGCCCAATATTGATAAAAAGGAAGAAGATTTAGAAGCAAAAAACAATTTTGGTCTGAACCTCCACAT
 CAGAATGGTGAATGTTACCCTAATGAGAAAAATCTGTTAATATGGACTTGGAC

ACGCGTACGCGGCCGCTCGAGCAGAACTCATCTCAGAAGAGGATCTGGCAGCAATGATATCCTGGATT
 ACAAGGATGACGACGATAAGGTTTAA

Protein Sequence: >RC207102 protein sequence
 Red=Cloning site Green=Tags(s)

```
MSVVGLDVGVSQSCYIAVARAGGIETIANEFSDRCTPSVISFGSKNRTIGVAAKNQQITHANNTVSNFKRF
HGRAFNDFPIQKEKENLSYDLVPLKNGGVGKVMYMGEEHLFVEQITAMLLTKLKETAENSLKKPVTDC
VISVPSFFFTAERRSVLDAAQIVGLNCLRLMNDMTAVALNYGIYKQDLPQLDEKPRIVVFDMGHSAFQV
SACAFNKGKLVLTAFDPFLGGKNFDEKLVEHFCAEFKTKYKLDKSKIRALLRLLYQECEKLLKLMSSN
STDLPNIECFMNDKDVSGKMNRSQFEELCAELLQKIEVPLYSLLEQTHLKVEDVSAVEIVGGATRIPAV
KERIAKFFGKDI STTLNADEAVARGCALQCAILSPAFAKVPRESVTDVAVPFPISL IWNHDS EDTGVHEVF
SRNHAAPFSKVL TFLRRGPFELEAFYSDPQGVYPYEA KIGRFVQVNSAQKDGEKSRVKVVRVNTHGIF
TISTASMVEKVPTEENEMSSEADMECLNQRPPENPDTDKNVQQDNSEAGTQPQVQ TDAQTSQSPSPSEL
TSEENKIPDADKANEKKVDQPPEAKPKIKVNVNVELPIEANLVWQLGKDLLNMYIETEGKMIMQDKLEKE
RNDAKNAVEEYVYFRDKL CGPYEKFICEQDHQNFRLRL TETEDWLYEEGEDQAKQAYVDKLEELMKIGT
PVKVRVQEAERPKMFEELGRLQHYAKIAADFRNKDEKYNHIDESEMKKVEKSVNEVMEWMNNVMAQA
KKS LDQDPVVRAQEIKTKIKELNNTCEPVVTQPKPKIESPKLERTPNGPNIDKKEEDLEDKNNFGAEPHP
QNGECYPNEKNSVNMDLD
```

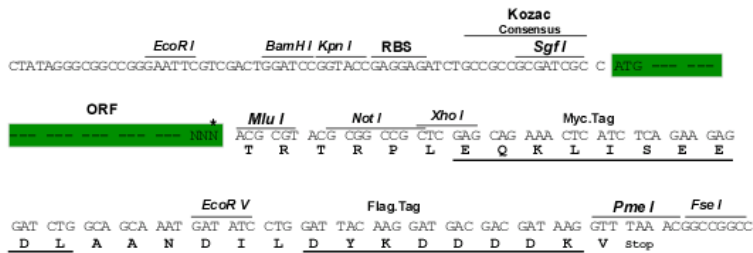
TRTRPLEQKLISEEDLAANDILDYKDDDDKV

Chromatograms: https://cdn.origene.com/chromatograms/mk6202_a10.zip

Restriction Sites: SgfI-MluI

Cloning Scheme:

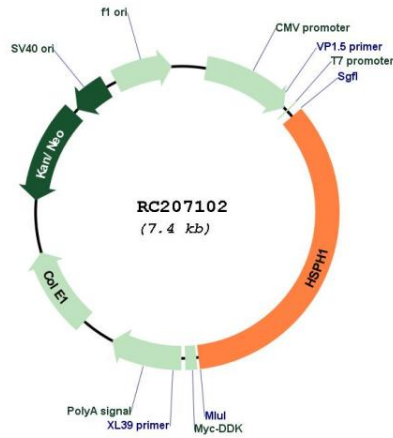
Cloning sites used for ORF Shuttling:



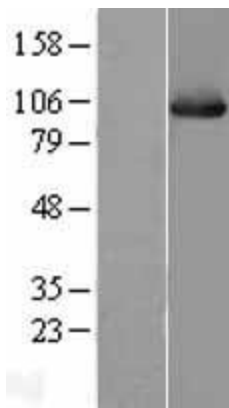
* The last codon before the Stop codon of the ORF

ACCN:	NM_006644
ORF Size:	2574 bp
OTI Disclaimer:	The molecular sequence of this clone aligns with the gene accession number as a point of reference only. However, individual transcript sequences of the same gene can differ through naturally occurring variations (e.g. polymorphisms), each with its own valid existence. This clone is substantially in agreement with the reference, but a complete review of all prevailing variants is recommended prior to use. More info
OTI Annotation:	This clone was engineered to express the complete ORF with an expression tag. Expression varies depending on the nature of the gene.
Components:	The ORF clone is ion-exchange column purified and shipped in a 2D barcoded Matrix tube containing 10ug of transfection-ready, dried plasmid DNA (reconstitute with 100 ul of water).
Reconstitution Method:	<ol style="list-style-type: none">1. Centrifuge at 5,000xg for 5min.2. Carefully open the tube and add 100ul of sterile water to dissolve the DNA.3. Close the tube and incubate for 10 minutes at room temperature.4. Briefly vortex the tube and then do a quick spin (less than 5000xg) to concentrate the liquid at the bottom.5. Store the suspended plasmid at -20°C. The DNA is stable for at least one year from date of shipping when stored at -20°C.
RefSeq:	NM_006644.4
RefSeq Size:	5360 bp
RefSeq ORF:	2577 bp
Locus ID:	10808
UniProt ID:	Q92598
Cytogenetics:	13q12.3
Domains:	HSP70
Protein Families:	Stem cell - Pluripotency
MW:	96.9 kDa
Gene Summary:	This gene encodes a member of the heat shock protein 70 family of proteins. The encoded protein functions as a nucleotide exchange factor for the molecular chaperone heat shock cognate 71 kDa protein (Hsc70). In addition, this protein plays a distinct but related role as a holdase that inhibits the aggregation of misfolded proteins, including the cystic fibrosis transmembrane conductance regulator (CFTR) protein. Elevated expression of this protein has been observed in numerous human cancers. [provided by RefSeq, Mar 2017]

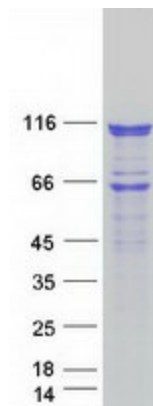
Product images:



Circular map for RC207102



Western blot validation of overexpression lysate (Cat# [LY402001]) using anti-DDK antibody (Cat# [TA50011-100]). Left: Cell lysates from untransfected HEK293T cells; Right: Cell lysates from HEK293T cells transfected with RC207102 using transfection reagent MegaTran 2.0 (Cat# [TT210002]).



Coomassie blue staining of purified HSPH1 protein (Cat# [TP307102]). The protein was produced from HEK293T cells transfected with HSPH1 cDNA clone (Cat# RC207102) using MegaTran 2.0 (Cat# [TT210002]).