

Product datasheet for **RC207101**

CSDE1 (NM_007158) Human Tagged ORF Clone

Product data:

Product Type:	Expression Plasmids
Product Name:	CSDE1 (NM_007158) Human Tagged ORF Clone
Tag:	Myc-DDK
Symbol:	CSDE1
Synonyms:	D1S155E; UNR
Mammalian Cell Selection:	Neomycin
Vector:	pCMV6-Entry (PS100001)
E. coli Selection:	Kanamycin (25 ug/mL)



[View online »](#)

ORF Nucleotide
Sequence:

>RC207101 ORF sequence
Red=Cloning site Blue=ORF Green=Tags(s)

TTTTGTAATACGACTCACTATAGGGCGGCCGGGAATTCGTCGACTGGATCCGGTACCGAGGAGATCTGCC
GCCGCGATCGCC

ATGAGCTTTGATCCAAACCTTCTCCACAACAATGGACATAATGGGTACCCTAATGGTACTTCAGCAGCAC
TGCGTGAAACTGGGGTTATTGAAAACTGTTAACCTCTTACGGATTTATTCAAGTTCAGAACGTCGAAGC
TAGACTTTTCTTCCACTGTTACAGTATAATGGCAACCTGCAAGACTTAAAAGTAGGAGATGATGTTGAA
TTTGAAGTATCATCGGACCGACGGACTGGGAAACCCATTGCTGTTAACTGGTGAAGATAAAAAAAGAAA
TCCTCCCTGAAGAACGAATGAATGGACAAGAAGTGTGTTTATCTGACTTACACCCCTGAAGATGTCGAAGG
GAACGTTCACTGGAACTGGAGATAAAAATAAACTTTGTAATTGATAACAATAACATACTGGTGTGTA
AGTGCTCGCAACATTATGCTGTTGAAAAAGAAACAAGCCCGCTGTCAGGGAGTAGTTTGCCATGAAGG
AGGCATTTGGCTTTATTGAAAGAGGTGATGTTGTAAGAGATATTCTTCACTATAGTGAATTTAAGGG
TGACTTAGAAACCTTACAGCCTGGCGATGATGTGAATTCACAATCAAGGACAGAATGGTAAAGAAGTT
GCAACAGATGTCAGACTATTGCCTCAAGGAACAGTCATTTTTGAAGATATCAGCATTGAACATTTTGAAG
GAACTGTAACCAAGTTATCCCAAAAGTACCCAGTAAAAACCAGAATGACCCATTGCCAGGACGCATCAA
AGTTGACTTTGTGATCCCTAAAGAACTTCCCTTTGGAGACAAAGATACGAAATCCAAGGTGACCCCTGCTG
GAAGGTGACCATGTTAGGTTTAAATTTCAACAGACCGACGTGACAAATTAGAGCGAGCAACCAATATAG
AAGTCTGTCAAATACATTTCACTTCAATGAAGCCCGAGAAATGGGTGTGATTGCTGCCATGAGAGA
TGGTTTTGGTTTCATCAAGTGTGTGGATCGTGATGTTGATGTTTCTTCCACTTCAGTGAATTTCTGGAT
GGGAACCAAGTCCATATTGCAGATGAAGTAGAGTTTACTGTGGTTCCTGATATGCTCTCTGCTCAAAGAA
ATCATGCTATTAGGATTAATAAACTTCCCAAGGGCAGGTTTCATTTTCACTTCCATTGATCAGATCCCGTTT
TCTGGGCACGGTAGAAAAAGAAGCCACTTTTTCCAATCCTAAAACCACTAGCCCAATAAAGGCAAGAG
AAGGAGGCTGAGGATGGCATTATTGCTTATGATGACTGTGGGGTAAAAGTACTATTGCTTTTCAAGCCA
AGGATGTGGAAGGATCTACTTCTCCTCAAATAGGAGATAAGGTTGAATTTAGTATTAGTGACAAACAGAG
GCCTGGACAGCAGGTTGCAACTTGTGTGCGACTTTTAGGTCGTAATTTCAACTCCAAGAGGCTCTTGGGT
TATGTGGCAACTCTGAAGGATAATTTGGATTTATTGAAACAGCCAATCATGATAAGGAAATCTTTTTCC
ATTACAGTGAGTCTCTGGTGTGTTGATAGCCTGGAAGTGGGGACATGGTCGAGTATAGCTTGCCAA
AGGCAAAAGGCAACAAAGTCAGTGCAGAAAAAGTGAACAAAACACACTCAGTGAATGGCATTACTGAGGAA
GCTGATCCCACTTTACTCTGGCAAAGTAATTCGCCCCCTGAGGAGTGTGATCCAACACAGACTGAGT
ACCAAGGAATGATTGAGATTGTGGAGGAGGCGATATGAAAGGTGAGGTCTATCCATTTGGCATCGTTGG
GATGGCCAACAAAGGGGATTGCCTGCAGAAAGGGGAGAGCGTCAAGTTCCAATTTGTGTCTGGGCCAA
AATGCACAAACTATGGCTTACAACATCACACCCCTGCGCAGGGCCACAGTGGAAATGTGTGAAAGATCAGT
TTGGCTTCATTAAGTATGAAGTAGGAGATAGCAAGAAGCTCTTTTTCCATGTGAAAGAAGTTCAGGATGG
CATTGAGCTACAGGCAGGAGATGAGGTGGAGTTCTCAGTATTCTTAATCAGCGCACTGGCAAGTGCAGC
GCCTGTAATGTTGGCGAGTCTGTGAGGGCCCCAAGGCTGTTGCAGCTCCTCGACCTGATCGGTTGGTCA
ATCGCTTGAAGAATATCACTCTGGATGATGCCAGTGCTCCTCGCCTAATGGTTCTTCTGTCAGCCAAGGG
ACCAGATAACTCAATGGGTTTGGTGCAGAAAGAAAGATCCGTCAAGCTGGTGTCTATTGAC

ACGCGTACGCGGCCGCTCGAGCAGAACTCATCTCAGAAGAGGATCTGGCAGCAATGATATCCTGGATT
ACAAGGATGACGACGATAAGGTTTAA

Protein Sequence: >RC207101 protein sequence
Red=Cloning site Green=Tags(s)

```
MSFDPNLLHNNGHNGYPNGTSAALRETGVIEKLLTSYGF IQCSERQARLFFHCSQYNGNLQDLKVGDDVE
FEVSSDRRTGKPIAVKL VKIKQEILPEERMNGQEVFYL TYTPEDVEGNVQLETGDKINVIDNNKHTGAV
SARNIMLLKKKQARCQGVV CAMKEAFGF IERGDVVKEIFFHYSEFKGDLETLQPGDDVEFTIKDRNGKEV
ATDVRLLPQGTVIFEDISIEHFEGTVTKVIPKVP SKNQNDPLPGR IKVDFVIPKELPFGDKDTSKVTLL
EGDHVRFNI STDRRKLERATNIEVLSNTFQFTNEAREMGVIAAMRDGFGF IKCVDRDVRMFFHFSEILD
GNQLHIADEVEFTVVPDMLSAQRNHAIRIKKLPKGTVSFHS HSDHRFLGTVEKEATFSNPKTTSPNKGKE
KEAEDGIIAYDDCGVKLTI AFQAKDVEGSTSPQIGDKVEFSISDKQRPGQVATCVRL LGRNSNSKRLLG
YVATLKD NFGFIETANHDKEIFFHYSEFGSDVDSLEL GDMVEYSLSKGKGNKVS AEKVNKTHSVNGITEE
ADPTIYSKGVIRPLRSVDPTQTEYQGMIEIVEEGDMKGEVY PFGIVGMANKGDCLQKGESVKFQLCVLGGQ
NAQTMAYNITPLRRATVECVKDQFGFINYEVGDSK KLFHVKVQDGI ELQAGDEVEFSVILNQRTGKCS
ACNVWRVCEGPKAVAAPRPDRLVNRLKNITLDDASAPRLMVL RQPRGPDNSMGFGAERKIRQAGVID
```

TRTRPLEQKLI SEEDLAANDILDYKDDDDKV

Chromatograms: https://cdn.origene.com/chromatograms/mk6333_h04.zip

Restriction Sites: SgfI-MluI

Cloning Scheme:

Cloning sites used for ORF Shuttling:



* The last codon before the Stop codon of the ORF

ACCN: NM_007158

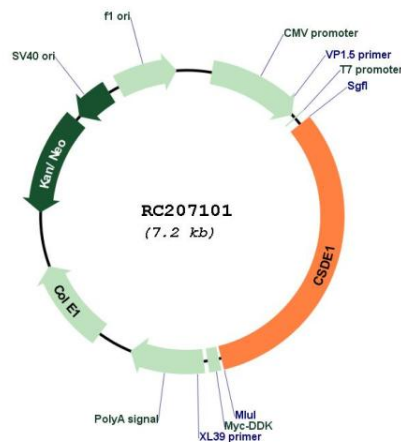
ORF Size: 2301 bp

OTI Disclaimer: The molecular sequence of this clone aligns with the gene accession number as a point of reference only. However, individual transcript sequences of the same gene can differ through naturally occurring variations (e.g. polymorphisms), each with its own valid existence. This clone is substantially in agreement with the reference, but a complete review of all prevailing variants is recommended prior to use. [More info](#)

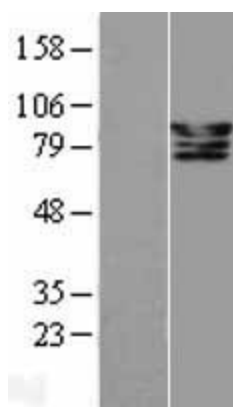
OTI Annotation: This clone was engineered to express the complete ORF with an expression tag. Expression varies depending on the nature of the gene.

Components:	The ORF clone is ion-exchange column purified and shipped in a 2D barcoded Matrix tube containing 10ug of transfection-ready, dried plasmid DNA (reconstitute with 100 ul of water).
Reconstitution Method:	<ol style="list-style-type: none"> 1. Centrifuge at 5,000xg for 5min. 2. Carefully open the tube and add 100ul of sterile water to dissolve the DNA. 3. Close the tube and incubate for 10 minutes at room temperature. 4. Briefly vortex the tube and then do a quick spin (less than 5000xg) to concentrate the liquid at the bottom. 5. Store the suspended plasmid at -20°C. The DNA is stable for at least one year from date of shipping when stored at -20°C.
RefSeq:	NM_007158.6
RefSeq Size:	4090 bp
RefSeq ORF:	2304 bp
Locus ID:	7812
UniProt ID:	O75534
Cytogenetics:	1p13.2
Domains:	CSD
Protein Families:	Transcription Factors
MW:	85.7 kDa
Gene Summary:	RNA-binding protein. Required for internal initiation of translation of human rhinovirus RNA. May be involved in translationally coupled mRNA turnover. Implicated with other RNA-binding proteins in the cytoplasmic deadenylation/translational and decay interplay of the FOS mRNA mediated by the major coding-region determinant of instability (mCRD) domain. [UniProtKB/Swiss-Prot Function]

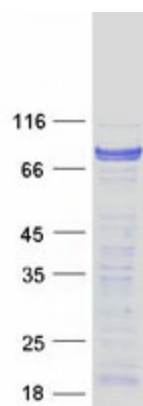
Product images:



Circular map for RC207101



Western blot validation of overexpression lysate (Cat# [LY416163]) using anti-DDK antibody (Cat# [TA50011-100]). Left: Cell lysates from untransfected HEK293T cells; Right: Cell lysates from HEK293T cells transfected with RC207101 using transfection reagent MegaTran 2.0 (Cat# [TT210002]).



Coomassie blue staining of purified CSDE1 protein (Cat# [TP307101]). The protein was produced from HEK293T cells transfected with CSDE1 cDNA clone (Cat# RC207101) using MegaTran 2.0 (Cat# [TT210002]).