

## Product datasheet for **RC207099**

### **Epsin 1 (EPN1) (NM\_013333) Human Tagged ORF Clone**

#### **Product data:**

Product Type:	Expression Plasmids
Product Name:	Epsin 1 (EPN1) (NM_013333) Human Tagged ORF Clone
Tag:	Myc-DDK
Symbol:	Epsin 1
Mammalian Cell Selection:	Neomycin
Vector:	pCMV6-Entry (PS100001)
E. coli Selection:	Kanamycin (25 ug/mL)



[View online »](#)

**ORF Nucleotide Sequence:**

>RC207099 representing NM\_013333  
 Red=Cloning site Blue=ORF Green=Tags(s)

TTTTGTAATACGACTCACTATAGGGCGGCCGGAATTCGTCGACTGGATCCGGTACCGAGGAGATCTGCC  
 GCC**GCGATCGCC**

ATGTCGACCTCGTCTTGAGGCGCCAGATGAAGAACATCGTCCAACTACTCAGAGCGGAGATCAAGG  
 TTCGAGAGGCCACGAGCAATGACCCCTGGGGCCATCCAGCTCCCTCATGTGAGAGATTGCCGACCTCAC  
 CTAACAACGTTGTCGCTTCTCGGAGATCATGAGCATGATCTGGAAGCGGCTCAATGACCATGGCAAGAAC  
 TGGCGTCACGTTTACAAGGCCATGACGCTGATGGAGTACCTCATCAAGACCGGCTCGGAGCGGTGTGCG  
 AGCAGTGAAGGAGAACATGTACGCCGTGACAGCCTGAAGGACTTCCAGTACGTGGACCGGACGGCAA  
 GGACCAGGGCGTGAACGTGCGTGAGAAAGCTAAGCAGCTGGTGGCCCTGCTGCGGACGAGGACCGGCTG  
 CGGAAGAGCGGGCGCACGCGCTCAAGACCAAGGAAAAGCTGGCAGACCGCCACGCGCTCATCAGCAG  
 CTGTGGGCTCAGGCCCTCCCGAGGCGGAGCAGGCGTGGCCGACAGCAGCGGGGAGGAGGAGCTGCA  
 GCTCCAGCTGGCCCTGGCCATGAGCAAGGAGGAGCCGACAGGAGGAGCGGATCCGTCGCGGGGATGAC  
 CTGCGGCTGCAGATGGCAATCGAGGAGAGCAAGAGGGAGACTGGGGGCAAGGAGGAGTCTGCCCTCATGG  
 ACCTTGCTGACGCTTTCACGGCCCCAGCTCCTGCCCGACACAGACCCCTGGGGGGGCCAGCACCCAT  
 GGCTGCTGCCGTCCCCACGGCTGCCCCACCTCGGACCCCTGGGGCGGCCCTGTCCCTCCAGCTGCT  
 GATCCCTGGGGAGGTCCAGCCCCACGCCGGCCTCTGGGGACCCCTGGAGGCTGCTGCCCTGCAGGAC  
 CCTCAGTTGACCTTGGGGTGGGACCCAGCCCTGCAGCTGGGGAGGGGCCACGCCTGATCCATGGGG  
 AAGTCCGATGGTGGGGTCCCGTCACTGGGCCCTCAGCTCCGATCCCTGGACACCGGCCCGGCTTC  
 TCAGATCCCTGGGAGGGTCACTGCCAAGCCAGCACAATGGCACAACAGCGGGGATTGACACGG  
 AGCCCCAGGATTCTCTGACTTTGACCGACTCCGACGGCACTCCGACCTCCGGGAGCAGCGCAGGAGA  
 GCTGGAGCTGCTGGCAGGAGAGGTGCCGCCCCGAAGCCCTGGGGGCTTTGACATGAGTGGGGTCAAGGGA  
 TCTCTGGCTGAGGCTGTGGGAGCCCCACCTGCAGCCACACCAACTCCACGCCCCCACCAGGAAGA  
 CGCCGGAGTATTCTGGGGCCAATGCAGCCCTCGTCGACTGGACTCGCTGGTGGAGCCGGCCGGGCC  
 CACGCCGCTGGAGCCAAGGCTCCAACCCCTTCTGCCAGGCGGAGGCCAGCCACTGGCCCTCCGTC  
 ACCAACCCCTTCCAGCCCGCCTCCCGCAGCCTCACCTGAACCAGCTCCGTCAGTCTGTGCCTC  
 CCGTCCCTGGAGCGCCACCCACGTACATCTCTCCCTTGGCGGGGCCCTGGCTGCCCCCATGATGCC  
 CCCGGCCCCCGGCCCAACTAATCCCTTCTCTA

**ACGCGT**ACGCGGCCGCTCGAGCAGAACTCATCTCAGAAGAGGATCTGGCAGCAAATGATATCTGGATT  
 ACAAGGATGACGACGATAAGGTTTAA

**Protein Sequence:**

>RC207099 representing NM\_013333  
 Red=Cloning site Green=Tags(s)

MSTSSLRQMKNI VHNYSAEIKVREATSNDPWGPSSSLMSEIADLTYNVVFSEIMSMIWKRLNDHGKN  
 WRHVYKAMTLM EYL IKTGSERVSQCKENMYAVQTLKDFQYVDRDQKQGVNVREKAKQLVALLRDEDRL  
 REERAHALKTKELAQATASSAAVGSPPPEAEQAWPQSSGEEELQLQLALAMSKEEADQEERIRRGDD  
 LRLQMAIEESKRETTGGKEESSLMDLADVFTAPAPAPPTDPWGGPAPMAAAVPTAAPTSDPWGGPPVPA  
 DPWGGPAPTPASGDPWRPAAPAGPSVDPWGGTPAPAAGEPTDPWGSDDGGVPVSGPSASDPWTPAPAF  
 SDPWGGSAPKSTNGTTAGGFDTEPDEFSDFDRLRLALPTSGSSAGELELLAGEVPARSPGAFDMSGV  
 SLAEAVGSPPPAATPTPTPPTRKTPEFSLGPNAAALVDLDSLVRPGPTPPGAKASNPFLPGGGPATGPSV  
 TNPFQPAPPATLTLNQLRLSPVPPVPGAPPTYISPLGGGGLPPMPPGPPAPNTNPFLL

**TRTRPLEQKLI**SEEDLAANDILDYKDDDDKV

**Chromatograms:**

[https://cdn.origene.com/chromatograms/mg2783\\_d12.zip](https://cdn.origene.com/chromatograms/mg2783_d12.zip)

**Restriction Sites:**

Sgfl-Mlul

**Cloning Scheme:**

**ACCN:** NM\_013333

**ORF Size:** 1650 bp

**OTI Disclaimer:** The molecular sequence of this clone aligns with the gene accession number as a point of reference only. However, individual transcript sequences of the same gene can differ through naturally occurring variations (e.g. polymorphisms), each with its own valid existence. This clone is substantially in agreement with the reference, but a complete review of all prevailing variants is recommended prior to use. [More info](#)

**OTI Annotation:** This clone was engineered to express the complete ORF with an expression tag. Expression varies depending on the nature of the gene.

**Components:** The ORF clone is ion-exchange column purified and shipped in a 2D barcoded Matrix tube containing 10ug of transfection-ready, dried plasmid DNA (reconstitute with 100 ul of water).

**Reconstitution Method:**

1. Centrifuge at 5,000xg for 5min.
2. Carefully open the tube and add 100ul of sterile water to dissolve the DNA.
3. Close the tube and incubate for 10 minutes at room temperature.
4. Briefly vortex the tube and then do a quick spin (less than 5000xg) to concentrate the liquid at the bottom.
5. Store the suspended plasmid at -20°C. The DNA is stable for at least one year from date of shipping when stored at -20°C.

**RefSeq:** [NM\\_013333.3](#)
**RefSeq Size:** 2430 bp

**RefSeq ORF:** 1653 bp

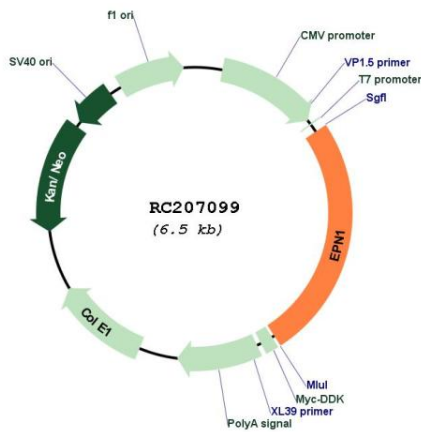
**Locus ID:** 29924

**UniProt ID:** [Q9Y6I3](#)

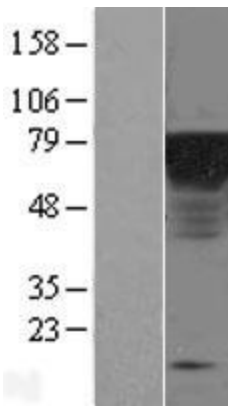
**Cytogenetics:** 19q13.42  
**Domains:** ENTH, UIM  
**Protein Pathways:** Endocytosis  
**MW:** 57.3 kDa

**Gene Summary:** This gene encodes a member of the epsin protein family. The encoded protein binds clathrin and is involved in the endocytosis of clathrin-coated vesicles. Loss of function of this gene is associated with reduced tumor growth and progression in certain cancer types. [provided by RefSeq, Mar 2016]

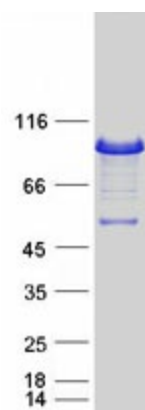
**Product images:**



Circular map for RC207099



Western blot validation of overexpression lysate (Cat# [LY415639]) using anti-DDK antibody (Cat# [TA50011-100]). Left: Cell lysates from untransfected HEK293T cells; Right: Cell lysates from HEK293T cells transfected with RC207099 using transfection reagent MegaTran 2.0 (Cat# [TT210002]).



Coomassie blue staining of purified EPN1 protein (Cat# [TP307099]). The protein was produced from HEK293T cells transfected with EPN1 cDNA clone (Cat# RC207099) using MegaTran 2.0 (Cat# [TT210002]).