

## Product datasheet for **RC207096**

### Pescadillo (PES1) (NM\_014303) Human Tagged ORF Clone

#### Product data:

Product Type:	Expression Plasmids
Product Name:	Pescadillo (PES1) (NM_014303) Human Tagged ORF Clone
Tag:	Myc-DDK
Symbol:	Pescadillo
Synonyms:	NOP7; PES
Mammalian Cell Selection:	Neomycin
Vector:	pCMV6-Entry (PS100001)
E. coli Selection:	Kanamycin (25 ug/mL)



[View online »](#)

**ORF Nucleotide Sequence:**

>RC207096 ORF sequence  
 Red=Cloning site Blue=ORF Green=Tags(s)

TTTTGTAATACGACTCACTATAGGGCGGCCGGGAATTCGTCGACTGGATCCGGTACCGAGGAGATCTGCC  
 GCC**CGGATCGCC**

ATGGGAGGCCCTTGAGAAGAAGAAGTATGAACGAGGCTCGGCCACCAACTACATCACCCGGAACAAGCCC  
 GGAAGAAGCTCCAGCTGAGCTTGCTGACTTTAGGCGGCTGTGCATTCTGAAGGGCATTATCCCCATGA  
 ACCCAAACACAAGAAGAAGGTTAACAAGGGTCTACAGCAGCCGAACGTTTTACCTTATCAAAGACATC  
 AGGTTTCTCCTCCACGAACCCATTGTCAACAAGTCCGTGAATACAAGGTGTTCTGTCGGGAAGCTCCGGA  
 AGGCTTATGGGAAGAGCGAGTGGAACTGTAGAGCGTTAAAGGACAATAAGCCCAACTACAACTCGA  
 CCACATCATCAAGGAACGGTATCCACGTTTCATCGATGCCCTGCGGGACCTGGACGATGCCCTCTCCATG  
 TGCTTCTGTTTTCCACCTTCCCGGACTGGCAAGTCCACGTGCAGACCATTAGCTGTGCCCGCCG  
 TCACTGTGGAGTTCATGCACTACATTATCGCTGCCCGTCCCTGCGCAAGGTCTTCTGTCCATCAAAGG  
 CATTACTACCAGCCGAGGTAAGTGGGGCAGCCATCGTGTGGATCACTCCCTATGCCTTCTCCATGAC  
 CACCCGACAGACGTGGACTACAGGGTATGGCCACCTTACCGAGTCTACACCAGCTGCTGGGCTTTG  
 TCAACTCCGCTTTACAGTTGCTCAACCTCCACTATCCCCGAAGCTCGAGGGTCAAGCCCAAGCAGA  
 GGCAAAGGCCGGTGAAGGCACCTACGCGTTGGACTCCGAGAGTTGATGGAGAACTGGCAGCCCTCAGT  
 GCCAGCTGGCCCGCTGGTGGTGCCTGCCACAGAGGAGGAGGCCGAGGTGGATGAGTTTCCACCGATG  
 GGGAGATGTCAGCGCAGGAGGAAGACCCGAGGAAGGAGCTGGAGGCGCAGGAGAAGCACAAGAAGCTTTT  
 TGAGGGCTGAAGTCTTCTGAAACGAGAGGTGCCCGTGGGCCCTGGCTTTCATCATCAGGAGTTTT  
 GGTGGGAAAGTGTCTGGGACAAATCTTGTGCATTGGGGCCACCTATGACGTACAGACATCCCGCATCA  
 CCCATCAGATTGTCAGCCGGCTGGGCAGCAGACCTCAGTCATTGGCAGGTGCTACGTGCAGCCCGAGT  
 GGTGTTTGACTCAGTGAACGCCAGGCTCCTTCTCCCGTGGCAGAGTACTTCTCTGGGGTGCAGTCCCC  
 CCACACCTTTACCTTTGTGACCGAGAAGGAAGGAGATTACGTTCCACCTGAGAAGCTGAAGTCTGG  
 CTCTGCAGCGGGAGAGGACCCAGGAACTGAATGAGTCAGAAGAGGAGGAGGAAGAGGACGACAACAA  
 CGAAGGTGATGGTGAAGAGGAGAAAATGAGGAGGAGGAGGAAGATGCAGAGGCTGGTTCAGAAAAG  
 GAGGAAGAGGCCCGCTGGCAGCCCTGGAAGAGCAGAGGATGGAGGGGAAGAAGCCAGGGTATGGCAG  
 GCACCTGAAGCTGGAGGATAAGCAGCGGCTGGCCAGGAGGAGGAGTGAAGCCAGCGCTGGCCAT  
 TATGATGATGAAGAAGCGGGAGAAGTACCTGTACCAGAAGATCATGTTTGGCAAGAGCGCAAAAATCCGA  
 GAGGCCAACAAAGCTGGCGGAGAAGCGGAAAGCCACGATGAGCGGTGAGGTCTGAGAAGAAGGCCAAGA  
 AGCAAGGCCGGAG

AG**CGGACCG**ACGCGTACGCGGCCGCTCGAGCAGAAACTCATCTCAGAAGAGGATCTGGCAGCAAATGATATCC  
 TGGATTACAAGGATGACGACGATAAGGTTTAA

**Protein Sequence:**

>RC207096 protein sequence  
 Red=Cloning site Green=Tags(s)

MGGLEKKKYERGSATNYITRNKARKKLQLSLADFRRILKGIYPHEPKHKKVKNKGSTAARTFYLIKDI  
 RFLLEHPIVNFREYKVFVRKLKAYGKSEWNTVERLKDKNPNYKLDHIKERYPTFIDALRDLDDALSM  
 CFLFSTFPRTGKCHVQTIQLCRRLTVEFMHYIIAARALRKVFLSIKGIYYQAEVLGQPIVWITPYAFSHD  
 HPTDVDYRVMATFTEFYTTLLGFVNFRLYQLLNLHYPPKLEGQAQAEAKAGEGTYALDSESCMEKLAALS  
 ASLARVVVPATEEEAEVDFPTDGEMSAQEEDRRKELEAQEKHKKLFEGLKFFLNREVPREALAFIIRSF  
 GGEVSWDKSLCIGATYDVTDSRITHQIVDRPGQTSVIGRCYVQPQWVFDVSNARLLLPVAEYFSGVQLP  
 PHLSPFVTEKEGDYVPEKLLKLLALQRGDPGNLNESEEEEEEDNNEGDEEGENEEDAEAGSEK  
 EEEARLAALAEQRMEGKPRVMAGTLKLEDKQRLAQEEEESEAKRLAIMMMKKREKYLQKIMFGKRRKIR  
 EANKLAEKRAHDEAVRSEKKAKKARPE

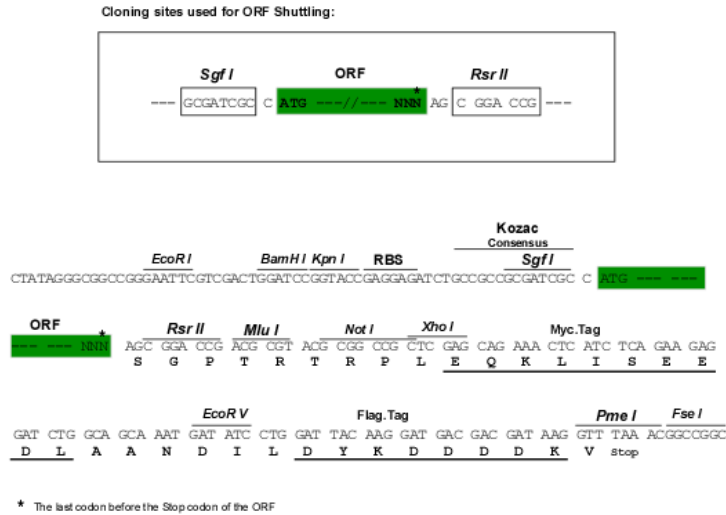
SGP**TRTRPLEQKLI**SEEDLAANDILDYKDDDDKV

**Chromatograms:**

[https://cdn.origene.com/chromatograms/mk6809\\_d05.zip](https://cdn.origene.com/chromatograms/mk6809_d05.zip)

Restriction Sites: SgfI-RsrII

Cloning Scheme:



ACCN: NM\_014303

ORF Size: 1764 bp

OTI Disclaimer: The molecular sequence of this clone aligns with the gene accession number as a point of reference only. However, individual transcript sequences of the same gene can differ through naturally occurring variations (e.g. polymorphisms), each with its own valid existence. This clone is substantially in agreement with the reference, but a complete review of all prevailing variants is recommended prior to use. [More info](#)

OTI Annotation: This clone was engineered to express the complete ORF with an expression tag. Expression varies depending on the nature of the gene.

Components: The ORF clone is ion-exchange column purified and shipped in a 2D barcoded Matrix tube containing 10ug of transfection-ready, dried plasmid DNA (reconstitute with 100 ul of water).

Reconstitution Method:

1. Centrifuge at 5,000xg for 5min.
2. Carefully open the tube and add 100ul of sterile water to dissolve the DNA.
3. Close the tube and incubate for 10 minutes at room temperature.
4. Briefly vortex the tube and then do a quick spin (less than 5000xg) to concentrate the liquid at the bottom.
5. Store the suspended plasmid at -20°C. The DNA is stable for at least one year from date of shipping when stored at -20°C.

RefSeq: [NM\\_014303.4](#)

RefSeq Size: 2312 bp

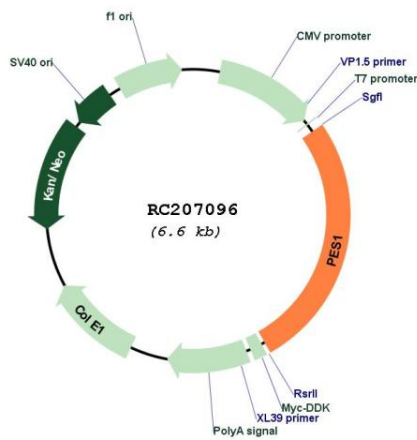
RefSeq ORF: 1767 bp

Locus ID: 23481

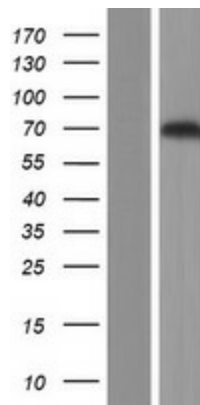
**UniProt ID:** O00541  
**Cytogenetics:** 22q12.2  
**Domains:** BRCT  
**MW:** 68 kDa

**Gene Summary:** This gene encodes a nuclear protein that contains a breast cancer associated gene 1 (BRCA1) C-terminal interaction domain. The encoded protein interacts with BOP1 and WDR12 to form the PeBoW complex, which plays a critical role in cell proliferation via pre-rRNA processing and 60S ribosomal subunit maturation. Expression of this gene may play an important role in breast cancer proliferation and tumorigenicity. Alternatively spliced transcript variants encoding multiple isoforms have been observed for this gene. Pseudogenes of this gene are located on the long arm of chromosome 4 and the short arm of chromosome 9. [provided by RefSeq, Aug 2011]

### Product images:



Circular map for RC207096



Western blot validation of overexpression lysate (Cat# [LY415373]) using anti-DDK antibody (Cat# [TA50011-100]). Left: Cell lysates from untransfected HEK293T cells; Right: Cell lysates from HEK293T cells transfected with RC207096 using transfection reagent MegaTran 2.0 (Cat# [TT210002]).