

## Product datasheet for RC207094

### EVL (NM\_016337) Human Tagged ORF Clone

#### Product data:

Product Type:	Expression Plasmids
Product Name:	EVL (NM_016337) Human Tagged ORF Clone
Tag:	Myc-DDK
Symbol:	EVL
Synonyms:	RNB6
Mammalian Cell Selection:	Neomycin
Vector:	pCMV6-Entry (PS100001)
E. coli Selection:	Kanamycin (25 ug/mL)
ORF Nucleotide Sequence:	>RC207094 representing NM_016337 Red=Cloning site Blue=ORF Green=Tags(s)

TTTTGTAATACGACTCACTATAGGGCGGCCGGAATTCGTCGACTGGATCCGGTACCGAGGAGATCTGCC  
GCC**CGATCGCC**

ATGGCCACAAGTGAACAGAGTATCTGCCAAGCCCGGGCTTCCGTGATGGTCTACGATGACACCAGTAAGA  
AATGGGTACCAATCAAACCTGGCCAGCAGGGATTAGCCGGATCAACATCTACCACAACACTGCCAGCAA  
CACCTTCAGAGTCGTTGGAGTCAAGTTCAGGATCAGCAGGTTGTGATCAATTATCAATCGTGAAGGG  
CTGAAGTACAATCAGGCCAGCCAACCTCCACCAGTGGCGAGATGCCCGCCAGGTCTACGGCTTAACT  
TTGCAAGTAAAGAAGAGGCAACCAGTTCTCCAATGCAATGCTGTTGCCCTGAACATCATGAATCCCA  
AGAAGGAGGCCCTCCAGCCAGCGTCAGGTGCAGAATGGCCCTCTCTGATGAGATGGACATCCAGAGA  
AGACAAGTGTGAGCAGCACCAGCAGCAGCGTCAAGAACTCTAGAAAGAAGAACCTCGGCCACAGGGC  
CCATCCTCCCACCAGGACATCCTTCATCTGCAGCCAGCGCCCGCTCTCATGTAGTGGGCTCCACCGCC  
CCCCCACCCAGTCCCACCTCCACCCACTGGGGCTACCCACCTCCCCACCCCACTGCCAGCCGGA  
GGAGCCCAGGGTCCAGCCACGACGAGAGCTCCATGTCAGGACTGGCCGTGCCATAGCTGGGGCAAGC  
TGAGAAGAGTCCAACGGCCAGAAGCGCATCTGGAGGCTCCAGTCCCAGTGGGACCTCAAAGTCCGATGC  
CAACCGGGCAAGCAGCGGGGTGGCGGAGGAGGCTCATGGAGGAAATGAACAACTGCTGGCCAAGAGG  
AGAAAAGCAGCCTCCCAGTCAGACAAGCCAGCCGAGAAGAAGGAAGATGAAAGCCAAATGGAAGATCCTA  
GTACCTCCCCCTCCGGGGACCCGAGCAGCCAGCCAGCCAACTCACTCAGAGGCTGGCCGGAAGCC  
CTGGGAGCGGAGCAACTCGTGGAGAAGCCTGTGTCTCGATTCTGTCCAGAACCCGTCTGTGGCAAAG  
AGCCCCGAAGCTAAGAGCCCCCTTCAGTCGAGCCTCACTTAGGATGAAGCCTGCTGGGAGCGTGAATG  
ACATGGCCCTGGATGCCTTCGACTTGGACCGGATGAAGCAGGAGATCCTAGAGGAGGTGGTGAAGAGCT  
CCACAAGTGAAGGAGGATCATCGACGCCATCAGGCAGGAGCTGAGTGGGATCAGCACCACG

**ACGCGT**ACGCGGCCGCTCGAGCAGAACTCATCTCAGAAGAGGATCTGGCAGCAAATGATATCCTGGATT  
ACAAGGATGACGACGATAAGGTTTAA



[View online >](#)

**Protein Sequence:** >RC207094 representing NM\_016337  
Red=Cloning site Green=Tags(s)

MATSEQSIQARASVMVYDDTSKKWVPIKPGQQGFSRINIYHNTASNTFRVVGVLQDQQVVINYSIVKG  
 LKYNQATPTFHQWRDARQVYGLNFASKEEATTFSNAMLFALNIMNSQEGGPSSQRQVQNGPSPDEMDIQR  
 RQVMEQHQQRQESLERRTSATGPILPPGHPSSAASAPVSCSGPPPPPPVPPPTGATPPPPPLPAG  
 GAQGSSSHDESSMSGLAAAAGAKLRRVQRPEDASGGSSPSGTSKSDANRASSGGGGGLMEEMNKLLAKR  
 RKAASQSDKPAEKKEDESQMEDPSTSPSPGTRAASQPPNSSEAGRKPWERSNSVEKPVSSILSRTPSVAK  
 SPEAKSPLQSQPHSRMKPAGSVNDMALDAFDLDRMKQEILEEVVRELHKVKEEIDAIRQELSGISTT

TRTRPLEQKLISEEDLAANDILDYKDDDDKV

**Chromatograms:** [https://cdn.origene.com/chromatograms/mk8077\\_a04.zip](https://cdn.origene.com/chromatograms/mk8077_a04.zip)

**Restriction Sites:** SgfI-MluI

**Cloning Scheme:**



\* The last codon before the Stop codon of the ORF

**ACCN:** NM\_016337

**ORF Size:** 1254 bp

**OTI Disclaimer:** The molecular sequence of this clone aligns with the gene accession number as a point of reference only. However, individual transcript sequences of the same gene can differ through naturally occurring variations (e.g. polymorphisms), each with its own valid existence. This clone is substantially in agreement with the reference, but a complete review of all prevailing variants is recommended prior to use. [More info](#)

**OTI Annotation:** This clone was engineered to express the complete ORF with an expression tag. Expression varies depending on the nature of the gene.

**Components:** The ORF clone is ion-exchange column purified and shipped in a 2D barcoded Matrix tube containing 10ug of transfection-ready, dried plasmid DNA (reconstitute with 100 ul of water).

**Reconstitution Method:**

1. Centrifuge at 5,000xg for 5min.
2. Carefully open the tube and add 100ul of sterile water to dissolve the DNA.
3. Close the tube and incubate for 10 minutes at room temperature.
4. Briefly vortex the tube and then do a quick spin (less than 5000xg) to concentrate the liquid at the bottom.
5. Store the suspended plasmid at -20°C. The DNA is stable for at least one year from date of shipping when stored at -20°C.

**RefSeq:** [NM\\_016337.3](#)

**RefSeq Size:** 1853 bp

**RefSeq ORF:** 1257 bp

**Locus ID:** 51466

**UniProt ID:** [Q9UI08](#)

**Cytogenetics:** 14q32.2

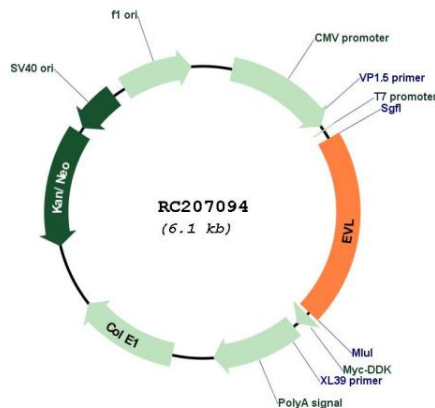
**Domains:** WH1

**Protein Families:** Druggable Genome

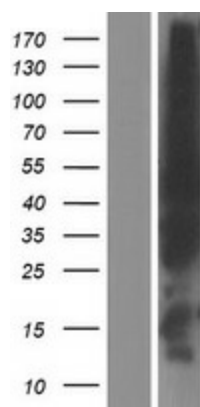
**MW:** 44.6 kDa

**Gene Summary:** Ena/VASP proteins are actin-associated proteins involved in a range of processes dependent on cytoskeleton remodeling and cell polarity such as axon guidance and lamellipodial and filopodial dynamics in migrating cells. EVL enhances actin nucleation and polymerization. [UniProtKB/Swiss-Prot Function]

**Product images:**



Circular map for RC207094



Western blot validation of overexpression lysate (Cat# [LY414045]) using anti-DDK antibody (Cat# [TA50011-100]). Left: Cell lysates from untransfected HEK293T cells; Right: Cell lysates from HEK293T cells transfected with RC207094 using transfection reagent MegaTran 2.0 (Cat# [TT210002]).