

Product datasheet for RC207088L1

LMAN1 (NM_005570) Human Tagged Lenti ORF Clone

Product data:

Product Type:	Expression Plasmids
Product Name:	LMAN1 (NM_005570) Human Tagged Lenti ORF Clone
Tag:	Myc-DDK
Symbol:	LMAN1
Synonyms:	ERGIC-53; ERGIC53; F5F8D; FMFD1; gp58; MCFD1; MR60
Mammalian Cell Selection:	None
Vector:	pLenti-C-Myc-DDK (PS100064)
E. coli Selection:	Chloramphenicol (34 ug/mL)
ORF Nucleotide Sequence:	The ORF insert of this clone is exactly the same as(RC207088).
Restriction Sites:	SgfI-MluI
Cloning Scheme:	

Cloning sites used for ORF Shuttling:



* The last codon before the Stop codon of the ORF.

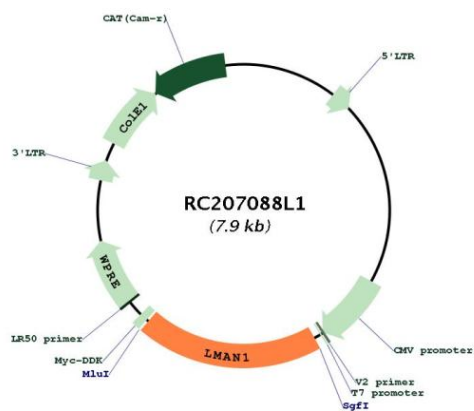
ACCN:	NM_005570
ORF Size:	1530 bp



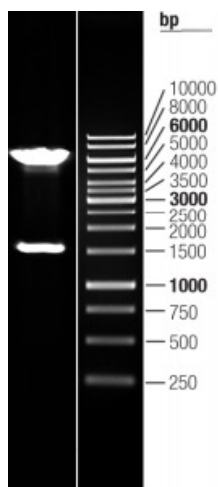
[View online »](#)

OTI Disclaimer:	The molecular sequence of this clone aligns with the gene accession number as a point of reference only. However, individual transcript sequences of the same gene can differ through naturally occurring variations (e.g. polymorphisms), each with its own valid existence. This clone is substantially in agreement with the reference, but a complete review of all prevailing variants is recommended prior to use. More info
OTI Annotation:	This clone was engineered to express the complete ORF with an expression tag. Expression varies depending on the nature of the gene.
Components:	The ORF clone is ion-exchange column purified and shipped in a 2D barcoded Matrix tube containing 10ug of transfection-ready, dried plasmid DNA (reconstitute with 100 ul of water).
Reconstitution Method:	<ol style="list-style-type: none">1. Centrifuge at 5,000xg for 5min.2. Carefully open the tube and add 100ul of sterile water to dissolve the DNA.3. Close the tube and incubate for 10 minutes at room temperature.4. Briefly vortex the tube and then do a quick spin (less than 5000xg) to concentrate the liquid at the bottom.5. Store the suspended plasmid at -20°C. The DNA is stable for at least one year from date of shipping when stored at -20°C.
RefSeq:	NM_005570.2
RefSeq Size:	4848 bp
RefSeq ORF:	1533 bp
Locus ID:	3998
UniProt ID:	P49257
Cytogenetics:	18q21.32
Domains:	Lectin_leg-like
Protein Families:	Druggable Genome, Transmembrane
MW:	57.5 kDa
Gene Summary:	The protein encoded by this gene is a membrane mannose-specific lectin that cycles between the endoplasmic reticulum, endoplasmic reticulum-Golgi intermediate compartment, and cis-Golgi, functioning as a cargo receptor for glycoprotein transport. The protein has an N-terminal signal sequence, a calcium-dependent and pH-sensitive carbohydrate recognition domain, a stalk region that functions in oligomerization, a transmembrane domain, and a short cytoplasmic domain required for organelle targeting. Allelic variants of this gene are associated with the autosomal recessive disorder combined factor V-factor VIII deficiency. [provided by RefSeq, Jul 2015]

Product images:



Circular map for RC207088L1



Double digestion of RC207088L1 using SgfI and MluI