

Product datasheet for **RC207084**

NIBAN1 (NM_052966) Human Tagged ORF Clone

Product data:

Product Type:	Expression Plasmids
Product Name:	NIBAN1 (NM_052966) Human Tagged ORF Clone
Tag:	Myc-DDK
Symbol:	NIBAN1
Synonyms:	C1orf24; FAM129A; GIG39; NIBAN
Mammalian Cell Selection:	Neomycin
Vector:	pCMV6-Entry (PS100001)
E. coli Selection:	Kanamycin (25 ug/mL)



[View online »](#)

ORF Nucleotide
Sequence:

>RC207084 ORF sequence
Red=Cloning site Blue=ORF Green=Tags(s)

TTTTGTAATACGACTCACTATAGGGCGGCCGGGAATTCGTCGACTGGATCCGGTACCGAGGAGATCTGCC
GCC**CGCATCGCC**

ATGGGCGGCTCAGCCTCCAGCCAGCTGGACGAGGGCAAGTGCGCTTACATCCGAGGGAAACTGAGGCTG
CCATCAAAAACCTCAGTCCCTACTACAGTCGTCAGTACTCTGTGGCTTTCTGCAATCACGTGCGCACTGA
AGTAGAACAGCAAAGAGATTTAACGTCACAGTTTTTGAAGACCAAGCCACCATTGGCGCCTGGAACATT
TTGTATGAAGCAGAGCTATCACAAATTTCTGAAGACATAAAGAAGTGGAAGGAGAGATACGTTGTAGTTA
AAAATGATTATGCTGTGGAGAGCTATGAGAATAAAGAGGCCTATCAGAGAGGAGCTGCTCTAAATGTGCG
AATTCTTCCAGCCGGTGGCAAGGTGTTAACCTCAGAAGATGAATATAATCTGTTGTCTGACAGGCATTTCC
CCAGACCCCTTTGCTCCAGTGAGAAGGAGAACAACCTCAGCCCTTTGTGGTCTGCCAAGGAATCCCGAG
TGTACCTGTGGCAGCCCTTCTTCCAGACAGGCTACTTCTGCTTCCACGAGGCTGTGACCAGAAGAGGTT
TAGTGCCTCCTGAGTGACTGCGTCAGGCATCTCAATCATGATTACATGAAGCAGATGACATTTGAAGCC
CAAGCCTTTTTAGAAGCTGTGCAATTTCCGACAGGAGAAGGGTCACTATGGTTCTGGGAAATGATCA
CTGGGGATGAAATCCAGATCCTGAGTAACCTGGTGATGGAGGAGCTCTGCCACTCTCCAGACAGACCT
GCTGCCTAAGATGAAGGGGAAGAAGATGACAGAAAGAGGACGTGGCTTGGTCTCCTCGAGGAGGCCCTAC
ACCCTGGTTCAGCATCAAGTTTCCAGAAGGATTAAGTGCCTTGAAGGAGGAATGCAGAGCTCTGACAAAGG
GCCTGGAAGGAACGATCCGTTCTGACATGGATCAGATTGTGAACCTCAAAGAACTATTTAATTGGAAGAT
CAAAGCGATGGTGGCCAGCCGGCGGAGAAAAGCTGCTTGGAGAGTGTGCAGCCATTCTGGCATCCATC
CTGGAGGAGCTCATGGGACCAGTGAGCTCGGGATTCAAGTGAAGTACGTGTACTCTTTGAGAAAGAGGTGA
ATGAAGTCAGCCAGAACTTCCAGACCACCAAGACAGTGTCCAGCTAAAGGAGCATCTAGACCCGGCTTAT
GAATCTTCCGCTGCATTCGCTGAAGATGGAACCTTGTTATACTAAAGTCAACCTGCTTCCAGAGCGCCTG
CAGGATCTCAAGAGCCGCTTCCAGATTCCCCACATTGATCTGGTGGTTCAGAGGACACAGAACTACATGC
AGGAGCTAATGGAGAATGCAGTGTTCACCTTTGAGCAGTTGCTTTCCCCACATCTCCAAGGAGAGCCCTC
CAAACTGCAGTTGCCATTGAGAAGGTTAACTCCGAGTCTTAAAGCAATATGATTATGACAGCAGCACC
ATCCGAAAGAAGATATTTCAAGAGGCAGTGTCAATCACACTTCCACTGTGCAGAAGGCACTGGCGT
CCACATGCAAACCAGAGCTTCCAGAAATACGAGCAGTTCATCTTTGCAGATCATACCAATATGATTCACGT
TGAAAATGTCTATGAGGAGATTTACATCAGATCTGCTTGTGAAACTCTGAAAGTGATAAAGGAAGCT
GCTATCTTGAAGAAACACAACCTTATTTGAAGATAACATGGCCTTGGCCAGTGAAAGTGTGTCCAGCTTAA
CAGATCTAAAGCCCCCAGAGGTCAAACCAGGCCAGCCCTGCCAGGAGAGCTTCTGCCATTCTGCCAGG
AGTTCTGGGTAGTGAGACCCCTCAGTAACGAAGTATTCCAGGAGTCAGAGGAAGAGAAGCAGCCTGAGGTC
CCTAGCTCGTTGGCCAAAGGAGAAAAGCCTTTCTCTCCCTGGGCCAAGCCACCCAGATGGGACTGAGC
AGGTGATTATTTCAAGAGTGGATGACCCCGTGGTGAATCCTGTGGCAACAGAGGACACAGCAGGACTCCC
GGGCACATGCTCATCAGAGCTGGAGTTTGGAGGGACCCCTTGGAGTGAAGAACCAGCCAGGAGAGCCA
GAACCCATCACTGCCTCGGGTCTTTGAAGGCGCTCAGAAAGTTGCTGACAGCGTCCGTGGAAAGTACCAG
TGGACTCTGCTCCAGTGATGGAAGAAGATACGAATGGGGAGAGCCAGCTTCCCAAGAAAATGAAGAAGA
AGAGGAAAAAGAGCCAGTCAGGCAGCTGCCATCCACCCGACAACCTGTGAAGAAAAGTGAAGTCAAGCAG
AGGGAGGCCCAACCTCCCTGTCCGAGGCCATGGGGAGGAGTTGGGGGATTTCCAGAGGTAGGCAGCC
CAGCCTCTCCGCCAGCCAGTGGAGGGCTCACCGAGGAGCCCTGGGGCCATGGAGGGGGAGCTCCAGG
AGAGGCCCTGCACACTCACTGCCATGAAGGAAGAGGGGGCAAGTGTACCGAGGAAGGGGATGCCTCACAG
CAAGAGGGCTGCACCTTAGGTTCTGACCCATCTGCCTCAGTGAGAGCCAGGTTTCTGAGGAACAAGAAG
AGATGGGAGGGCAAAGCAGCGCGGCCAGGCCACGGCCAGTGTGAATGCAGAGGAGATCAAGGTAGCCCG
TATTCATGAGTGTCAAGTGGTGGGAGGATGCTCCAACCCGGATGTCTGCTGTACACAAAGATGAC
GTGAAGGAGGGAGAAGGTGGTCCAGGAGATTTCCAGAGCTGCCCTCAGAGGAG

ACGCGTACGCGGCCGCTCGAGCAGAAACTCATCTCAGAAGAGGATCTGGCAGCAAATGATATCCTGGATT
ACAAGGATGACGACGATTAAGTTTAA

Protein Sequence: >RC207084 protein sequence
 Red=Cloning site Green=Tags(s)

MGGSASSQLDEGKCAYIRGKTEAAIKNFSPPYYSRQYSVAFCNHVRTEVEQQRDLTSQFLKTKPPLAPGTI
 LYEAELSQFSEDIKKWKERYVVVKNDYAVESYENKEAYQRGAAPKCRILPAGGKVLTSSEYNNLLSDRHF
 PDPLASSEKENTQPFVVLPEKFPVYLWQPFRRHGYFCHEAADQKRF SALLSDCVRHLNHDYMKQMTFEA
 QAFLEAVQFFRQEKGHYGSWEMITGDEIQILSNL VMEELLPTLQTDLLPKMKGKKNDKRRTWLGLEEAY
 TLVQHVSQVSEGLSALKEECRALTKGLEGTIRSDMQIVNSKNYLIGKIKAMVAQPAEKSCLESVQPF LASI
 LEELMGPVSSGFSEVRVLFKEVNEVSQNFQTTKDSVQLKEHLDRMLNPLH SVKMEPCYTKVNLHERL
 QDLKSRFRPHIDLVVQRTQNYMQELMENA VFTFEQLLSPHLQGEASKTAVAIEKVLRVLKQYDYDSSST
 IRKKIFQEALVQITLPTVQKALASTCKPELQKYEQFIFADHTNMIHVENVYEEILHQILLDETLKVIKEA
 AILKKNHLFEDNMALPSES VSSLTDLKPPTGSNQASPARRASAILPGVLGSETLSNEVFQSEEEKQPEV
 PSSLAKGESLSLPGSPPPDGTEQVIISRVD PVVNPVATEDTAGLPGTCSSELEFGGTLEDEEPAQEPEP
 EPITASGSLKALRLLTASVEVPVDSAPVMEEDTNGESHVPQENEEEEKEPSQAAA IHPDNCEESEVSE
 REAQPPCEAHGEELGGFPEVGPASPASGG L TEEPLGPMEGELPGEACTLTAHEGRGGKCTEEGDASQ
 QEGCTLGSDPICLSESQVSEEQEEMGGQSSAAQATASVNAEEIKVARIHECQWVVEDAPNPVLLSHKDD
 VKEGEGGQESFPPEL PSEE

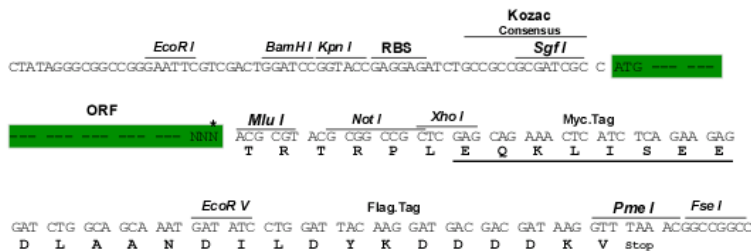
TRTRPLEQKLISEEDLAANDILDYKDDDDKV

Chromatograms: https://cdn.origene.com/chromatograms/mk6020_g04.zip

Restriction Sites: SgfI-MluI

Cloning Scheme:

Cloning sites used for ORF Shuttling:



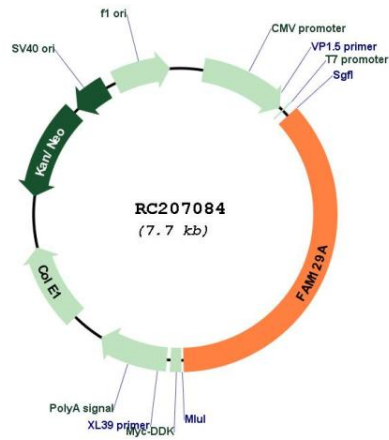
* The last codon before the Stop codon of the ORF

ACCN: NM_052966

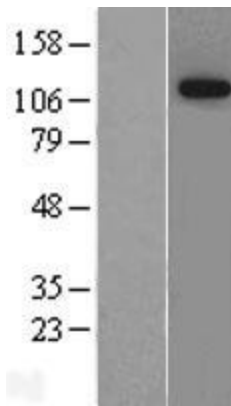
ORF Size: 2784 bp

OTI Disclaimer:	The molecular sequence of this clone aligns with the gene accession number as a point of reference only. However, individual transcript sequences of the same gene can differ through naturally occurring variations (e.g. polymorphisms), each with its own valid existence. This clone is substantially in agreement with the reference, but a complete review of all prevailing variants is recommended prior to use. More info
OTI Annotation:	This clone was engineered to express the complete ORF with an expression tag. Expression varies depending on the nature of the gene.
Components:	The ORF clone is ion-exchange column purified and shipped in a 2D barcoded Matrix tube containing 10ug of transfection-ready, dried plasmid DNA (reconstitute with 100 ul of water).
Reconstitution Method:	<ol style="list-style-type: none">1. Centrifuge at 5,000xg for 5min.2. Carefully open the tube and add 100ul of sterile water to dissolve the DNA.3. Close the tube and incubate for 10 minutes at room temperature.4. Briefly vortex the tube and then do a quick spin (less than 5000xg) to concentrate the liquid at the bottom.5. Store the suspended plasmid at -20°C. The DNA is stable for at least one year from date of shipping when stored at -20°C.
RefSeq:	NM_052966.4
RefSeq Size:	6969 bp
RefSeq ORF:	2787 bp
Locus ID:	116496
UniProt ID:	Q9BZQ8
Cytogenetics:	1q25.3
MW:	103.1 kDa
Gene Summary:	This gene encodes a member of the family with sequence similarity 129 protein family. This gene is highly expressed in several cancer cells and may serve as a prognostic marker for certain cancers. The encoded protein may play a role in regulating p53-mediated apoptosis. [provided by RefSeq, Sep 2016]

Product images:



Circular map for RC207084



Western blot validation of overexpression lysate (Cat# [LY409367]) using anti-DDK antibody (Cat# [TA50011-100]). Left: Cell lysates from untransfected HEK293T cells; Right: Cell lysates from HEK293T cells transfected with RC207084 using transfection reagent MegaTran 2.0 (Cat# [TT210002]).