

## Product datasheet for RC207067

### TMEM139 (NM\_153345) Human Tagged ORF Clone

#### Product data:

Product Type:	Expression Plasmids
Product Name:	TMEM139 (NM_153345) Human Tagged ORF Clone
Tag:	Myc-DDK
Symbol:	TMEM139
Mammalian Cell Selection:	Neomycin
Vector:	pCMV6-Entry (PS100001)
E. coli Selection:	Kanamycin (25 ug/mL)
ORF Nucleotide Sequence:	>RC207067 ORF sequence Red=Cloning site Blue=ORF Green=Tags(s)

TTTTGTAATACGACTCACTATAGGGCGGCCGGAATTCGTCGACTGGATCCGGTACCGAGGAGATCTGCC  
GCC**CGATCGCC**

ATGGTGCCAATGCACTTACTGGGGAGACTGGAGAAGCCGCTTCTCCTCCTGTGCTGCGCCTCCTTCTCTAC  
TGGGGCTGGCTTTGCTGGGCATAAAGACGGACATCACCCCGTTGCTTATTTCTTCTCACATTGGGTGG  
CTTCTTCTGTTTGCCTATCTCCTGGTCCGGTTTCTGGAATGGGGGCTTCGGTCCCAGCTCCAATCAATG  
CAGACTGAGAGCCAGGGCCCTCAGGCAATGCACGGGACAATGAAGCCTTTGAAGTGCCAGTCTATGAAG  
AGGCCGTGGTGGACTAGAATCCAGTCCCGCCCAAGAGTTGGACCAACCACCCCTACAGCACTGT  
TGTGATACCCCAAGCACCTGAGGAGGAACAACCTAGCCATCCAGAGGGGTCCAGGAGGCCAAACTGGAA  
CAGAGGCGAATGGCCTCAGAGGGGTCCATGGCCAGGAAGGAAGCCCTGGAAGAGCTCCAATCAACCTTC  
GGCTTCGGGGACCACGGGCTGTGTCCACTGCTCCTGATCTGCAGAGCTTGGCGGCAGTCCCACATTAGA  
GCCTCTGACTCCACCCCTGCCTATGATGTCTGCTTTGGTACCCTGATGATGATAGTGTTTTTTATGAG  
GACAACTGGGCACCCCT

**ACGCGT**ACGCGGCCGCTCGAGCAGAACTCATCTCAGAAGAGGATCTGGCAGCAAATGATATCCTGGATT  
ACAAGGATGACGACGATAAGGTTTAA

Protein Sequence:	>RC207067 protein sequence Red=Cloning site Green=Tags(s)
-------------------	--

MVPMHLLGRLEKPLLLLCCASFLLGLALLGIKTDITPVAYFFLTLGGFFLFAYLLVRFLEWGLRSQLQSM  
QTESPGPSGNARDNEAFEVPVYEEAVVGLSESQCRPQELDQPPYSTVVIPPAPEEEQPSHPEGSRRAKLE  
QRRMASEGSMQEGSPGRAPINLRLRGPRAVSTAPDLQSLAAVPTLEPLTPPPAYDVCFGHPDDDSVFYE  
DNWAPP

**TRTRPLEQKLISEEDLAANDILDYKDDDDKV**



[View online »](#)

Chromatograms: [https://cdn.origene.com/chromatograms/mk6331\\_g01.zip](https://cdn.origene.com/chromatograms/mk6331_g01.zip)

Restriction Sites: SgfI-MluI

Cloning Scheme:



ACCN: NM\_153345

ORF Size: 648 bp

OTI Disclaimer: The molecular sequence of this clone aligns with the gene accession number as a point of reference only. However, individual transcript sequences of the same gene can differ through naturally occurring variations (e.g. polymorphisms), each with its own valid existence. This clone is substantially in agreement with the reference, but a complete review of all prevailing variants is recommended prior to use. [More info](#)

OTI Annotation: This clone was engineered to express the complete ORF with an expression tag. Expression varies depending on the nature of the gene.

Components: The ORF clone is ion-exchange column purified and shipped in a 2D barcoded Matrix tube containing 10ug of transfection-ready, dried plasmid DNA (reconstitute with 100 ul of water).

Reconstitution Method:

1. Centrifuge at 5,000xg for 5min.
2. Carefully open the tube and add 100ul of sterile water to dissolve the DNA.
3. Close the tube and incubate for 10 minutes at room temperature.
4. Briefly vortex the tube and then do a quick spin (less than 5000xg) to concentrate the liquid at the bottom.
5. Store the suspended plasmid at -20°C. The DNA is stable for at least one year from date of shipping when stored at -20°C.

RefSeq: [NM\\_153345.3](#)

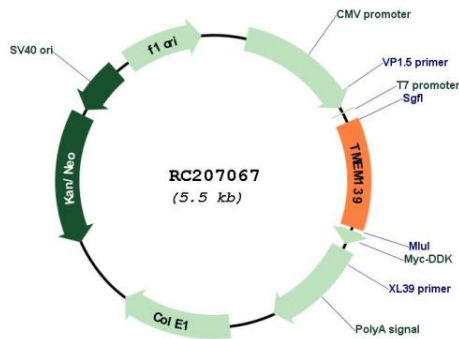
RefSeq Size: 1980 bp

RefSeq ORF: 651 bp

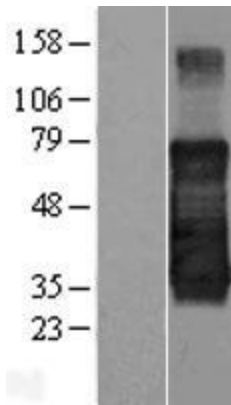
Locus ID: 135932

**UniProt ID:** [Q8IV31](#)  
**Cytogenetics:** 7q34  
**Protein Families:** Transmembrane  
**MW:** 23.7 kDa  
**Gene Summary:** May be involved in cellular trafficking of proteins such as SLC4A1.[UniProtKB/Swiss-Prot Function]

**Product images:**



Circular map for RC207067



Western blot validation of overexpression lysate (Cat# [LY407062]) using anti-DDK antibody (Cat# [TA50011-100]). Left: Cell lysates from untransfected HEK293T cells; Right: Cell lysates from HEK293T cells transfected with RC207067 using transfection reagent MegaTran 2.0 (Cat# [TT210002]).