

Product datasheet for RC207066

FBXL14 (NM_152441) Human Tagged ORF Clone

Product data:

Product Type:	Expression Plasmids
Product Name:	FBXL14 (NM_152441) Human Tagged ORF Clone
Tag:	Myc-DDK
Symbol:	FBXL14
Synonyms:	Fbl14
Mammalian Cell Selection:	Neomycin
Vector:	pCMV6-Entry (PS100001)
E. coli Selection:	Kanamycin (25 ug/mL)
ORF Nucleotide Sequence:	>RC207066 ORF sequence Red=Cloning site Blue=ORF Green=Tags(s)

TTTTGTAATACGACTCACTATAGGGCGGCCGGAATTCGTCGACTGGATCCGGTACCGAGGAGATCTGCC
GCC**CGATCGC**C

ATGGAGACCCACATCTCATGCCTGTTCCCGGAGCTGCTGGCCATGATCTTCGGCTACCTGGACGTCCGGG
ACAAGGGCGCGCGGCAGGTGTGCACCGCTGGCGGGACGCCCTACCACAAGTCGGTGTGGCGGG
GGTGGAGGCCAAGCTGCACCTGCGCCGGGCCAACCCGTCGCTGTTCCCGAGCTGCAGGCCCGGGGCATC
CGCCGGGTGCAGATCCTGAGCCTCGCCGAGCCTCAGCTACGTGATCCAGGGCATGGCCAAATCGAGA
GCCTCAACCTCAGCGGCTGCTACAACCTCACCGACAACGGGCTGGGCCACGCGTTTGTGCAGGAGATCGG
CTCCCTGCGCGCTCTCAACCTGAGCCTCTGCAAGCAGATCACTGACAGCAGCCTGGGCCGATAGCCAG
TACCTCAAGGGCCTGGAGGTGCTGGAGCTGGGAGGTTGCAGCAACATCACCAACTGGCCTTCTGCTCA
TCGCTGGGGTCTGCAGCGCCTCAAGAGCCTTAACCTCCGAGCTGCCGCCACCTTTTCGGATGTGGGCAT
CGGGCACCTGGCCGGCATGACGCGCAGCGCGGCGGAGGGCTGCCTGGGCCTGGAGCAGCTCACGCTACAG
GACTGCCAGAAGCTCACAGATCTTTCTCTAAAGCACATCTCCCGAGGGCTGACGGGCTTGAAGGCTCTCA
ACCTCAGCTTCTGTGGGGGAATCTCGGACGCTGGCCTCCTGCACCTGTGCGACATGGGCAGCCTGCGCAG
CCTCAACCTGCGCTCCTGTGACAACATCAGTGACACGGGCATCATGCATCTGGCCATGGGCAGCCTGCGC
CTCTCGGGCTGGATGTTTCGTTCTGTGACAAGTGGGAGAGCAGAGTCTGGCTTACATAGCCAGGGGG
TGGATGGCCTCAAGTCTCTCCCTCTGCTCCTGCCACATCAGTGATGATGGCATCAACCGCATGGTGGC
GCAGATGCACGGGCTGCGCACGCTCAACATTGGACAGTGTGTGCGCATCACGGACAAGGGCCTGGAGCTG
ATCGCTGAGCACCTGAGCCAACCTACCGGCATAGACCTGTACGGCTGCACCCGAATCACCAAGCGCGGCC
TGGAGCGCATCACGAGCTGCCGTGCCTCAAGGTAACCTGGGACTCTGGCAGATGACGGACAGTGA
GAAGGAGGCACGAGGGGATTTTTCTCCATTATCACTGTGAGAACTCGGGGAAGCTCCAGAAGG

AG**CGGACCG**ACGCGTACGCGGCCGCTCGAGCAGAACTCATCTCAGAAGAGGATCTGGCAGCAAATGATATCC
TGGATTACAAGGATGACGACGATAAGGTTTAA



[View online >](#)

Protein Sequence: >RC207066 protein sequence
Red=Cloning site Green=Tags(s)

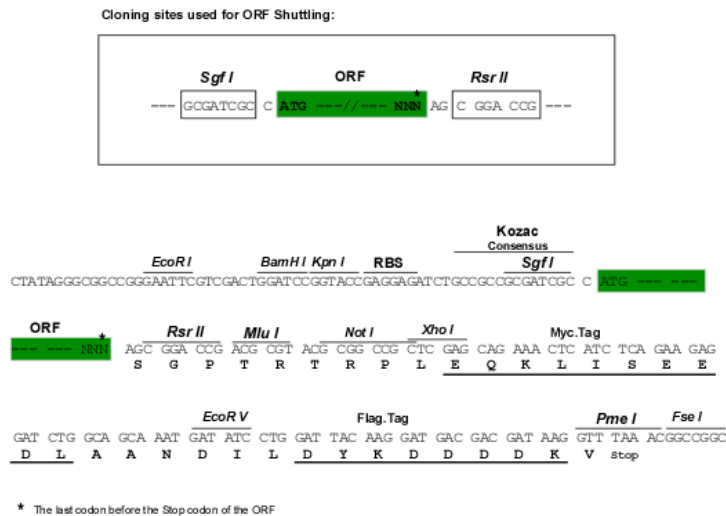
METHISCLFPELLAMIFGYLDVRDKGRAAQVCTAWRDAAYHKSVMWRGVEAKLHLRRANPSLFPSLQARGI
 RRVQILSLRRSLSYVIQGMANIESLNLSGCYNLTDNGLGHAFVQIEIGSLRALNLSLCKQITDSSLGRIAQ
 YLKGLEVELEGGCSNITNTGLLLIAWGLQRLKSLNLRSCRHLSDVGIGHLAGMTRSAAEGLGLEQLTLQ
 DCQKLTDLCLKHISRGLTGLRLLNLSFCGGISDAGLLHLSHMGSLRSLNLRSCDNI SDTGIMHLAMGSLR
 LSGLDVSFCDKVGDSLAYIAQGLDGLKSLSLCSCHISDDGINRMVRQMHGLRTLNI GQCVRITDKGLEL
 IAEHLSQLTGIDLYGCTRITKRGLERITQLPCLKVNLNLGLWQMTDSEKEARGDFSPLFTVTRGSSRR

SGPTRTRPLEQKLI SEEDLAANDILDYKDDDDKV

Chromatograms: https://cdn.origene.com/chromatograms/mk6619_h11.zip

Restriction Sites: SgfI-RsrII

Cloning Scheme:



ACCN: NM_152441

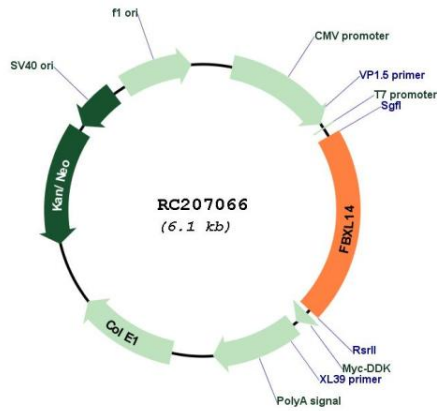
ORF Size: 1254 bp

OTI Disclaimer: Due to the inherent nature of this plasmid, standard methods to replicate additional amounts of DNA in E. coli are highly likely to result in mutations and/or rearrangements. Therefore, OriGene does not guarantee the capability to replicate this plasmid DNA. Additional amounts of DNA can be purchased from OriGene with batch-specific, full-sequence verification at a reduced cost. Please contact our customer care team at custsupport@origene.com or by calling 301.340.3188 option 3 for pricing and delivery.

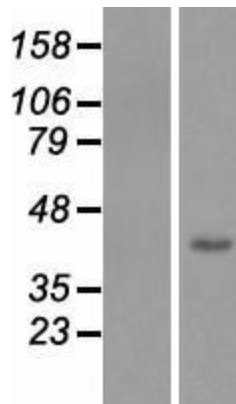
The molecular sequence of this clone aligns with the gene accession number as a point of reference only. However, individual transcript sequences of the same gene can differ through naturally occurring variations (e.g. polymorphisms), each with its own valid existence. This clone is substantially in agreement with the reference, but a complete review of all prevailing variants is recommended prior to use. [More info](#)

OTI Annotation:	This clone was engineered to express the complete ORF with an expression tag. Expression varies depending on the nature of the gene.
Components:	The ORF clone is ion-exchange column purified and shipped in a 2D barcoded Matrix tube containing 10ug of transfection-ready, dried plasmid DNA (reconstitute with 100 ul of water).
Reconstitution Method:	<ol style="list-style-type: none">1. Centrifuge at 5,000xg for 5min.2. Carefully open the tube and add 100ul of sterile water to dissolve the DNA.3. Close the tube and incubate for 10 minutes at room temperature.4. Briefly vortex the tube and then do a quick spin (less than 5000xg) to concentrate the liquid at the bottom.5. Store the suspended plasmid at -20°C. The DNA is stable for at least one year from date of shipping when stored at -20°C.
RefSeq:	NM_152441.1 , NP_689654.1
RefSeq Size:	2111 bp
RefSeq ORF:	1257 bp
Locus ID:	144699
UniProt ID:	Q8N1E6
Cytogenetics:	12p13.33
Domains:	LRR, F-box, LRR_CC
Protein Families:	Druggable Genome
MW:	45.9 kDa
Gene Summary:	Members of the F-box protein family, such as FBXL14, are characterized by an approximately 40-amino acid F-box motif. SCF complexes, formed by SKP1 (MIM 601434), cullin (see CUL1; MIM 603134), and F-box proteins, act as protein-ubiquitin ligases. F-box proteins interact with SKP1 through the F box, and they interact with ubiquitination targets through other protein interaction domains (Jin et al., 2004 [PubMed 15520277]).[supplied by OMIM, Mar 2008]

Product images:



Circular map for RC207066



Western blot validation of overexpression lysate (Cat# [LY407542]) using anti-DDK antibody (Cat# [TA50011-100]). Left: Cell lysates from untransfected HEK293T cells; Right: Cell lysates from HEK293T cells transfected with RC207066 using transfection reagent MegaTran 2.0 (Cat# [TT210002]).