

Product datasheet for **RC207056**

FOXR1 (NM_181721) Human Tagged ORF Clone

Product data:

Product Type:	Expression Plasmids
Product Name:	FOXR1 (NM_181721) Human Tagged ORF Clone
Tag:	Myc-DDK
Symbol:	FOXR1
Synonyms:	DLNB13; FOXN5
Mammalian Cell Selection:	Neomycin
Vector:	pCMV6-Entry (PS100001)
E. coli Selection:	Kanamycin (25 ug/mL)
ORF Nucleotide Sequence:	>RC207056 ORF sequence Red=Cloning site Blue=ORF Green=Tags(s)

TTTGTAAATACGACTCACTATAGGGCGGCCGGAATTCGTCGACTGGATCCGGTACCGAGGAGATCTGCC
GCC**CGATCGCC**

ATGGGGAACGAGCTCTTTCTGGCCTTCACCACATCTCACCTCCCCTTAGCGGAGCAGAACTTGCCAGGT
ATAAACTCCGAATTGTTAAGCCACCAAATACCCCTAGAGAAAAACCAACCCTGATAAGGATGGTCC
AGATTATGAGCCCAACCTCTGGATGTGGGTAAATCCCAACATTGTGTATCCCCCTGGAAAGCTGGAGGTC
TCAGGACGTAGGAAGAGGGAGGACCTGACAAGCACACTCCCCTCCTCTCAGCCACCCAGAAAGGAGGAAG
ATGCCAGCTGCTCAGAGGCCGAGGGGTGAATCACTGTCCCAGTCTCCAGCAAGCGGTCTCCCCCTCG
GAAGCGGTTTGCCTTTTCCCCCAGCACCTGGGAGCTCACAGAAGAGGAGGAGGCTGAGGACCAGGAAGAC
AGCTCCTCTATGGCTCTCCCATCCCCTCACAAAAGGGCCCCCTCCAGAGTCGGAGGCTTCGGCAAGCCA
GCAGCCAGGCGGGGAGGCTCTGGTCCCGGCCCTCTCAATTACTTCCACCTAATTGCCCTGGCATTAAAG
AAACAGTTCCCCCTGTGGCCTCAACGTGAACAGATCTACAGTTTCACTCGAAAGCACTTCCCCTTTTTC
CGGACGGCCCCGGAAGGCTGGAAGAATACTGTCCGTACAATCTCTGTTTTGAGACAGCTTTGAGAAAG
TGCCTGTCAGCATGCAGGGCGGGCCAGCACACGGCCTCGATCTTGCCTCTGGAAGTTGACCGAGGAGGG
ACACCGCCGCTTTGCGGAGGAGGCCCGCCTTGCTTCCACTCGGCTAGAAAGTATCCAACAGTGCATG
AGCCAGCCAGATGTGATGCCCTTCTCTTTGATCTT

ACGCGTACGCGGCCGCTCGAGCAGAACTCATCTCAGAAGAGGATCTGGCAGCAATGATATCCTGGATT
ACAAGGATGACGACGATAAGGTTTAA



[View online »](#)

Protein Sequence: >RC207056 protein sequence
 Red=Cloning site Green=Tags(s)

MGNELFLAFTTSHLPLAEQKLARYKLRIKPKLPLEKKPNPKDGPDYEPNLWMWVNPNIYPPGKLEV
 SGRRKREDLTSTLPSSQPPQKEEDASCSEAAGVESLSQSSSKRSPPRKRFSPSTWELTEEEAEDQED
 SSSMALPSPHKRAPLQSRRLQASSQAGRLWSRPLNYFHLIALALRNSSPCGLNVQIYSFTRKHFPFF
 RTAPEGWKNTVRHNLCFRDSFEKVPVSMQGGASTRPRSCLWKL TEEGHRRFAEEARALASTRLESIQQCM
 SQPDVMPFLFDL

TRTRPLEQKLISEEDLAANDILDYKDDDDKV

Chromatograms: https://cdn.origene.com/chromatograms/mk6544_c07.zip

Restriction Sites: SgfI-MluI

Cloning Scheme:



* The last codon before the Stop codon of the ORF

ACCN: NM_181721

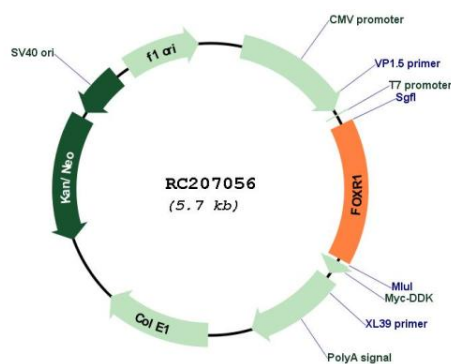
ORF Size: 876 bp

OTI Disclaimer: Due to the inherent nature of this plasmid, standard methods to replicate additional amounts of DNA in E. coli are highly likely to result in mutations and/or rearrangements. Therefore, OriGene does not guarantee the capability to replicate this plasmid DNA. Additional amounts of DNA can be purchased from OriGene with batch-specific, full-sequence verification at a reduced cost. Please contact our customer care team at custsupport@origene.com or by calling 301.340.3188 option 3 for pricing and delivery.

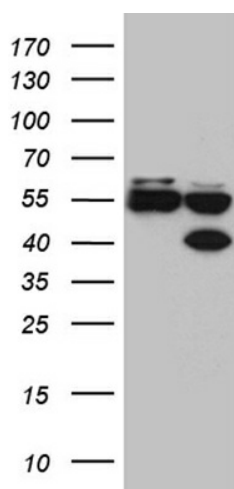
The molecular sequence of this clone aligns with the gene accession number as a point of reference only. However, individual transcript sequences of the same gene can differ through naturally occurring variations (e.g. polymorphisms), each with its own valid existence. This clone is substantially in agreement with the reference, but a complete review of all prevailing variants is recommended prior to use. [More info](#)

OTI Annotation:	This clone was engineered to express the complete ORF with an expression tag. Expression varies depending on the nature of the gene.
Components:	The ORF clone is ion-exchange column purified and shipped in a 2D barcoded Matrix tube containing 10ug of transfection-ready, dried plasmid DNA (reconstitute with 100 ul of water).
Reconstitution Method:	<ol style="list-style-type: none"> 1. Centrifuge at 5,000xg for 5min. 2. Carefully open the tube and add 100ul of sterile water to dissolve the DNA. 3. Close the tube and incubate for 10 minutes at room temperature. 4. Briefly vortex the tube and then do a quick spin (less than 5000xg) to concentrate the liquid at the bottom. 5. Store the suspended plasmid at -20°C. The DNA is stable for at least one year from date of shipping when stored at -20°C.
Note:	Plasmids are not sterile. For experiments where strict sterility is required, filtration with 0.22um filter is required.
RefSeq:	NM_181721.3
RefSeq Size:	1215 bp
RefSeq ORF:	879 bp
Locus ID:	283150
UniProt ID:	Q6PIV2
Cytogenetics:	11q23.3
MW:	33.3 kDa
Gene Summary:	This gene encodes a member of the forkhead box (FOX) family of transcription factors. FOX family members are monomeric, helix-turn-helix proteins with a core DNA-binding domain of approximately 110 aa. Many FOX transcription factors play roles in determining cell fates during early development. This forkhead box protein lacks the C-terminal basic region found in many other FOX family members. It is located within the 11q23.3 region which is commonly deleted in neuroblastomas. [provided by RefSeq, Jul 2008]

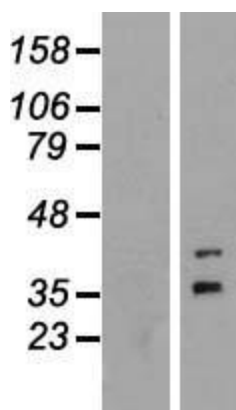
Product images:



Circular map for RC207056



HEK293T cells were transfected with the pCMV6-ENTRY control (Cat# [PS100001], Left lane) or pCMV6-ENTRY FOXR1 (Cat# RC207056, Right lane) cDNA for 48 hrs and lysed. Equivalent amounts of cell lysates (5 ug per lane) were separated by SDS-PAGE and immunoblotted with anti-FOXR1 antibody (Cat# [TA812053]). Positive lysates [LY405636] (100ug) and [LC405636] (20ug) can be purchased separately from OriGene.



Western blot validation of overexpression lysate (Cat# [LY405636]) using anti-DDK antibody (Cat# [TA50011-100]). Left: Cell lysates from untransfected HEK293T cells; Right: Cell lysates from HEK293T cells transfected with RC207056 using transfection reagent MegaTran 2.0 (Cat# [TT210002]).